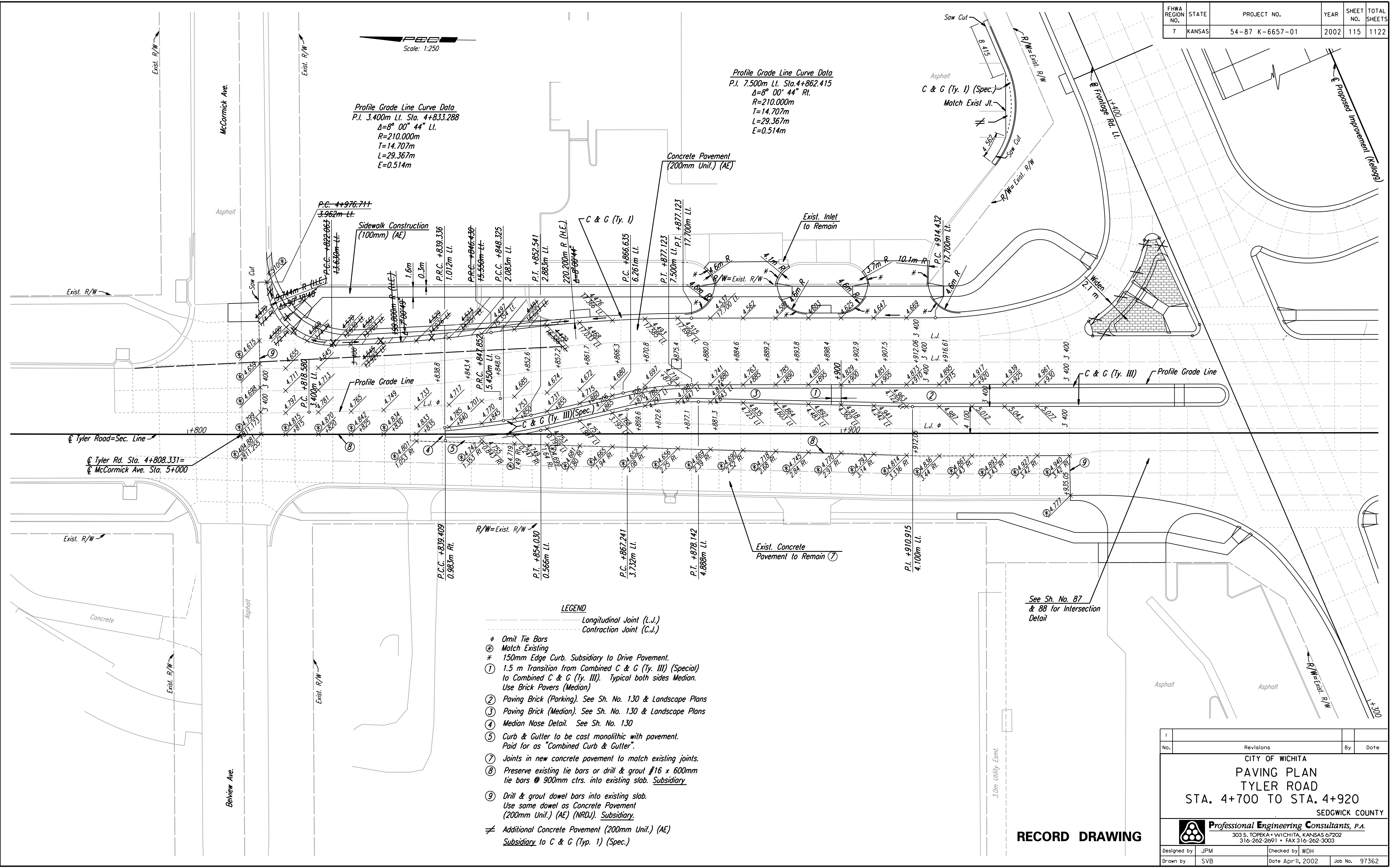


FHWA REGION NO.	STATE	PROJECT NO.	YEAR	SHEET NO.	TOTAL SHEETS
7	KANSAS	54-87 K-6657-01	2002	115	1122

DATE	
BY	
REFERENCES NOTED	
REFERENCES CHECKED	

DSNR: JPM OPER: SVB SCALE: 1:250
 I:/1997/97362/As-Built/dgn s/ Sh 115-Tyler-pav4700.dgn Last Rev: 8-14-07 By: gar



Profile Grade Line Curve Data
 P.I. 3.400m Lt. Sta. 4+833.288
 $\Delta=8^{\circ} 00' 44''$ Rt.
 $R=210.000m$
 $T=14.707m$
 $L=29.367m$
 $E=0.514m$

Profile Grade Line Curve Data
 P.I. 7.500m Lt. Sta. 4+862.415
 $\Delta=8^{\circ} 00' 44''$ Rt.
 $R=210.000m$
 $T=14.707m$
 $L=29.367m$
 $E=0.514m$

- LEGEND**
- Longitudinal Joint (L.J.)
 - Contraction Joint (C.J.)
 - ⊕ Ornit Tie Bars
 - ⊗ Match Existing
 - * 150mm Edge Curb. Subsidiary to Drive Pavement.
 - ① 1.5 m Transition from Combined C & G (Ty. III) (Special) to Combined C & G (Ty. III). Typical both sides Median. Use Brick Pavers (Median)
 - ② Paving Brick (Parking). See Sh. No. 130 & Landscape Plans
 - ③ Paving Brick (Median). See Sh. No. 130 & Landscape Plans
 - ④ Median Nose Detail. See Sh. No. 130
 - ⑤ Curb & Cullter to be cast monolithic with pavement. Paid for as "Combined Curb & Gutter".
 - ⑦ Joints in new concrete pavement to match existing joints.
 - ⑧ Preserve existing tie bars or drill & grout #16 x 600mm tie bars @ 900mm ctrs. into existing slab. Subsidiary
 - ⑨ Drill & grout dowel bars into existing slab. Use same dowel as Concrete Pavement (200mm Unif.) (AE) (NRD). Subsidiary.
 - ≠ Additional Concrete Pavement (200mm Unif.) (AE) Subsidiary to C & G (Typ. 1) (Spec.)

See Sh. No. 87 & 88 for Intersection Detail

RECORD DRAWING

No.	Revisions	By	Date

CITY OF WICHITA
PAVING PLAN
 TYLER ROAD
 STA. 4+700 TO STA. 4+920
 SEDGWICK COUNTY

Professional Engineering Consultants, P.A.
 303 S. TOPEKA • WICHITA, KANSAS 67202
 316-262-2691 • FAX 316-262-3003

Designed by	JPM	Checked by	WDH
Drawn by	SVB	Date	April, 2002
		Job No.	97362