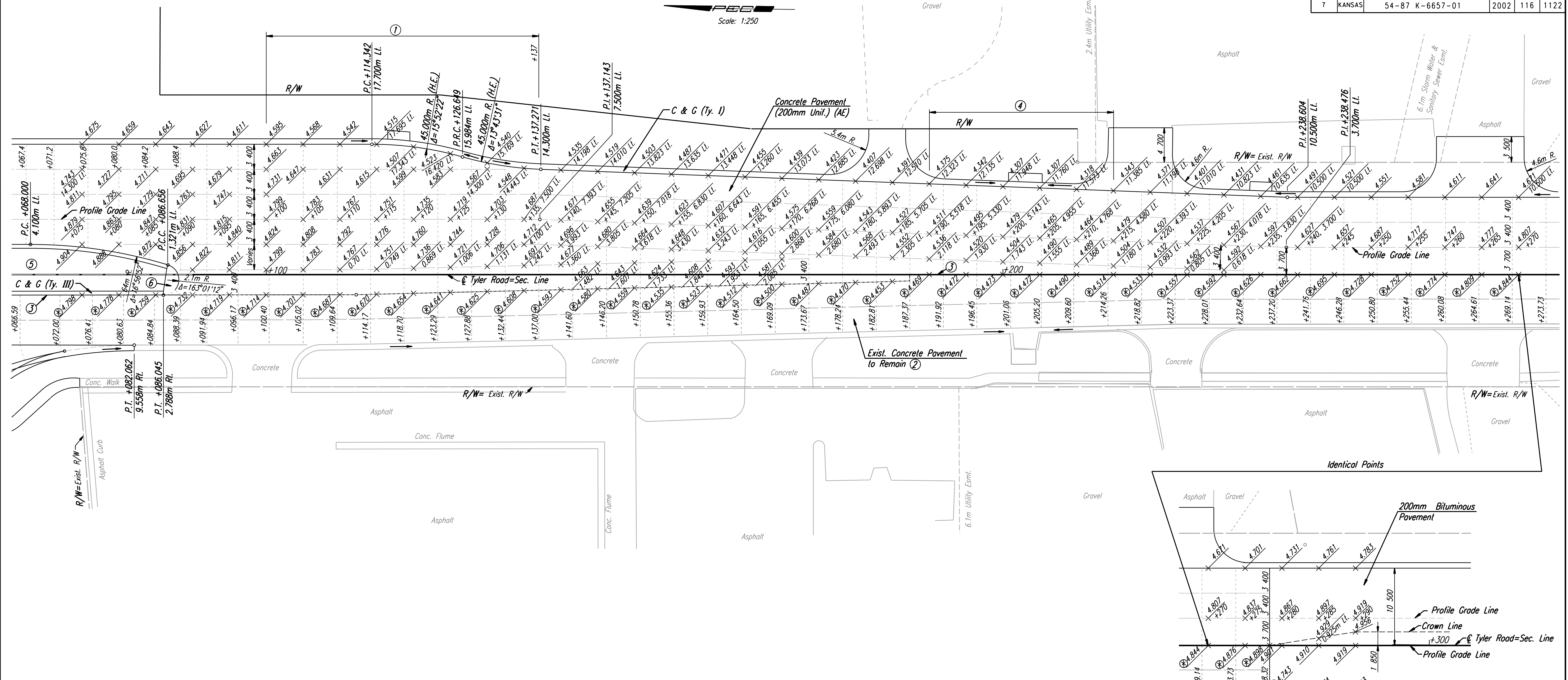
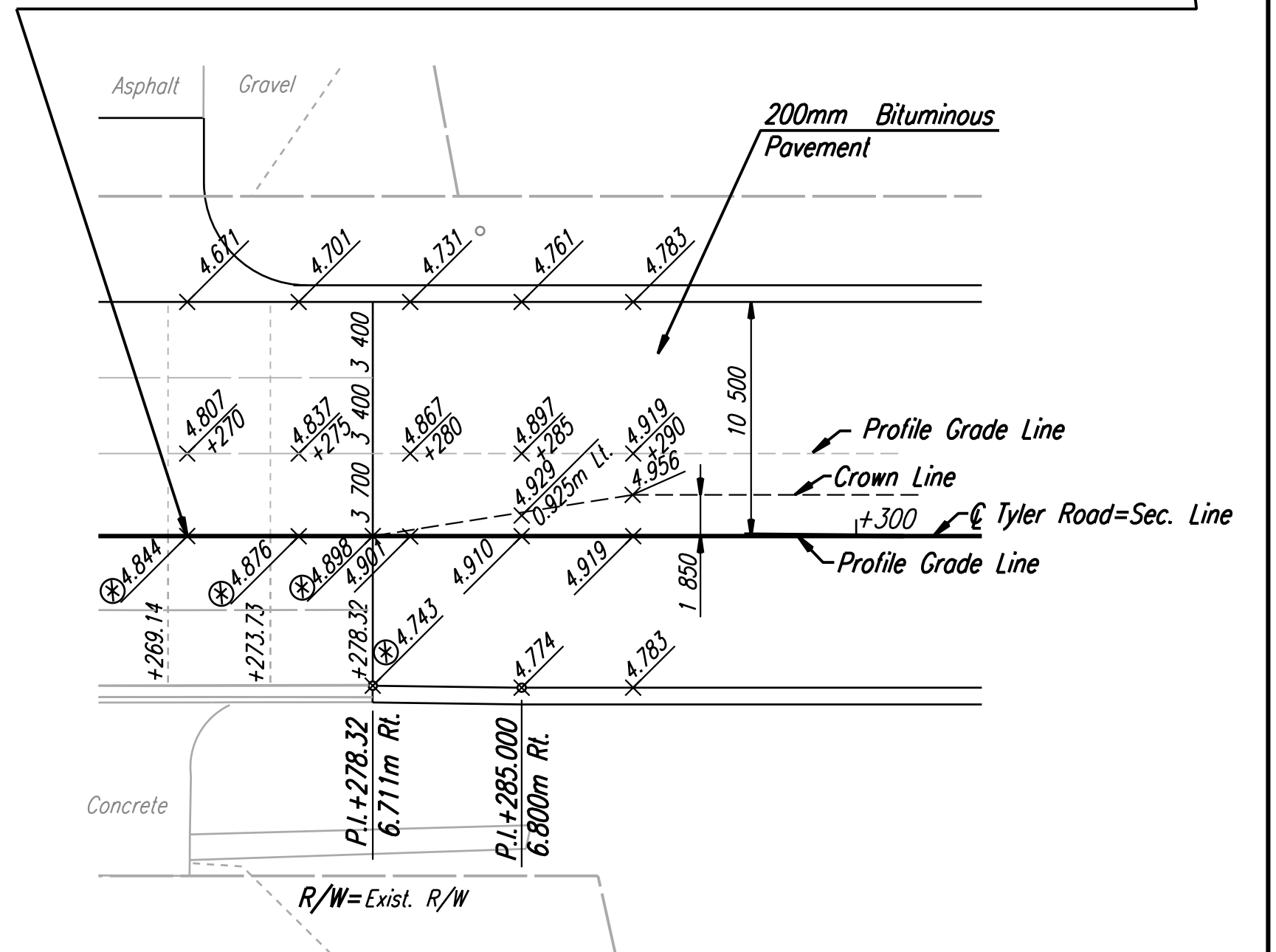


FHWA REGION NO.	STATE	PROJECT NO.	YEAR	SHEET NO.	TOTAL SHEETS
7	KANSAS	54-87 K-6657-01	2002	116	1122

DATE	BY
REFERENCES NOTED	REFERENCES CHECKED



- LEGEND**
- Longitudinal Joint (L.J.)
 - Contraction Joint (C.J.)
 - ⊕ Omil Tie Bars
 - ⊗ Match Existing
 - ① Transition X-Slope in right turn lane from -2.00% @ Sta. 5+100 to -3.00% @ Sta.5+118 to -2.00% @ Sta. 5+137.
 - ② Joints in new concrete pavement to match existing joints.
 - ③ Preserve existing tie bars or drill & grout #16 x 600mm tie bars @ 900mm ctrs. into existing slab. *Subsidiary.*
 - ④ Transition X-Slope in outside two lanes Lt. from -2.00% @ Sta. 5+190 to -2.50% @ Sta.5+200 to -2.00% @ Sta. 5+215.
 - ⑤ Paving Brick (Parking). See Sh. No. 130 & Landscape Plans
 - ⑥ Median Nose Detail. See Sh. No. 130



DSNR: JPM OPER: SVB SCALE: 1:250
 I:\1997\97362\As-Builts\ dgn's\Sh 116-Tyler-pav5075.dgn Last Rev: 8-14-07 By: gdr

RECORD DRAWING

No.	Revisions	By	Date

CITY OF WICHITA
 PAVING PLAN
 TYLER ROAD
 STA. 5+075 TO STA. 5+300
 SEDGWICK COUNTY

Professional Engineering Consultants, P.A.
 303 S. TOPEKA • WICHITA, KANSAS 67202
 316-262-2691 • FAX 316-262-3003

Designed by	JPM	Checked by	WDH
Drawn by	SVB	Date	April, 2002
		Job No.	97362