

FHWA REGION NO.	STATE	PROJECT NO.	YEAR	SHEET NO.	TOTAL SHEETS
7	KANSAS	54-87 K-6657-01	2002	117	1122

* 100 mm Pressure relief joint. See Standard Drawing RD661 Sl, Sh. No. 126.

⊗ Expansion joint. See Bridge Plans for type & details.

K.J. Keyed Construction Joint.

① Measured along back of CSB.

② Offset to back of CSB on bridge (w=420).

GENERAL NOTES:

Special Concrete Bridge Approach shall be paid for as sq. m of Concrete Pavement (260 mm Unit).(A.E.) and includes all work and materials required to construct the approach slab as shown on this sheet.

All work and materials required for installation of expansion joints and pressure relief joints shall be subsidiary to this bid item.

All preformed joint material shall be installed perpendicular to pavement surface. Formed joints shall be edged with 6 mm radius tool for length of joint.

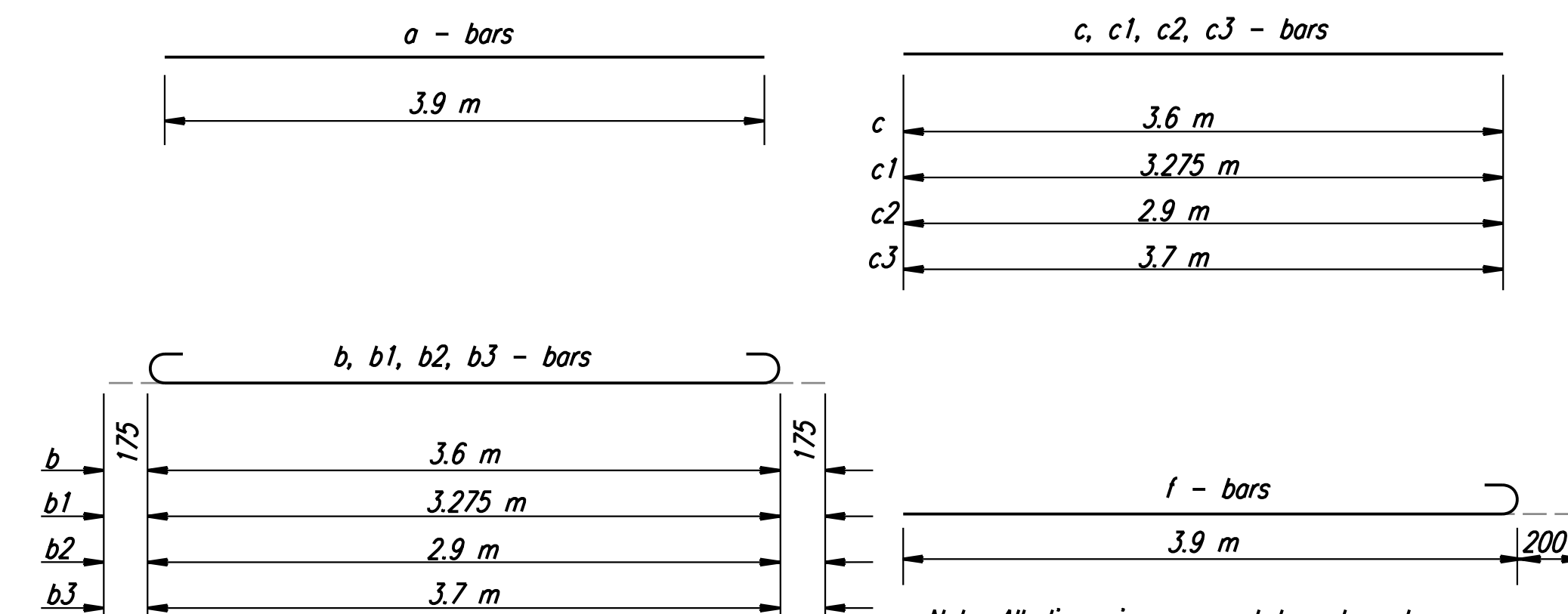
At the Contractor's option #13 x 900 mm tie bars @ 380 mm centers may be substituted for the #19 e bars at 750 mm centers.

All reinforcing steel shall be epoxy coated.

See Standard Drawing RD661 Sl for details of joints & reinforcing mesh.

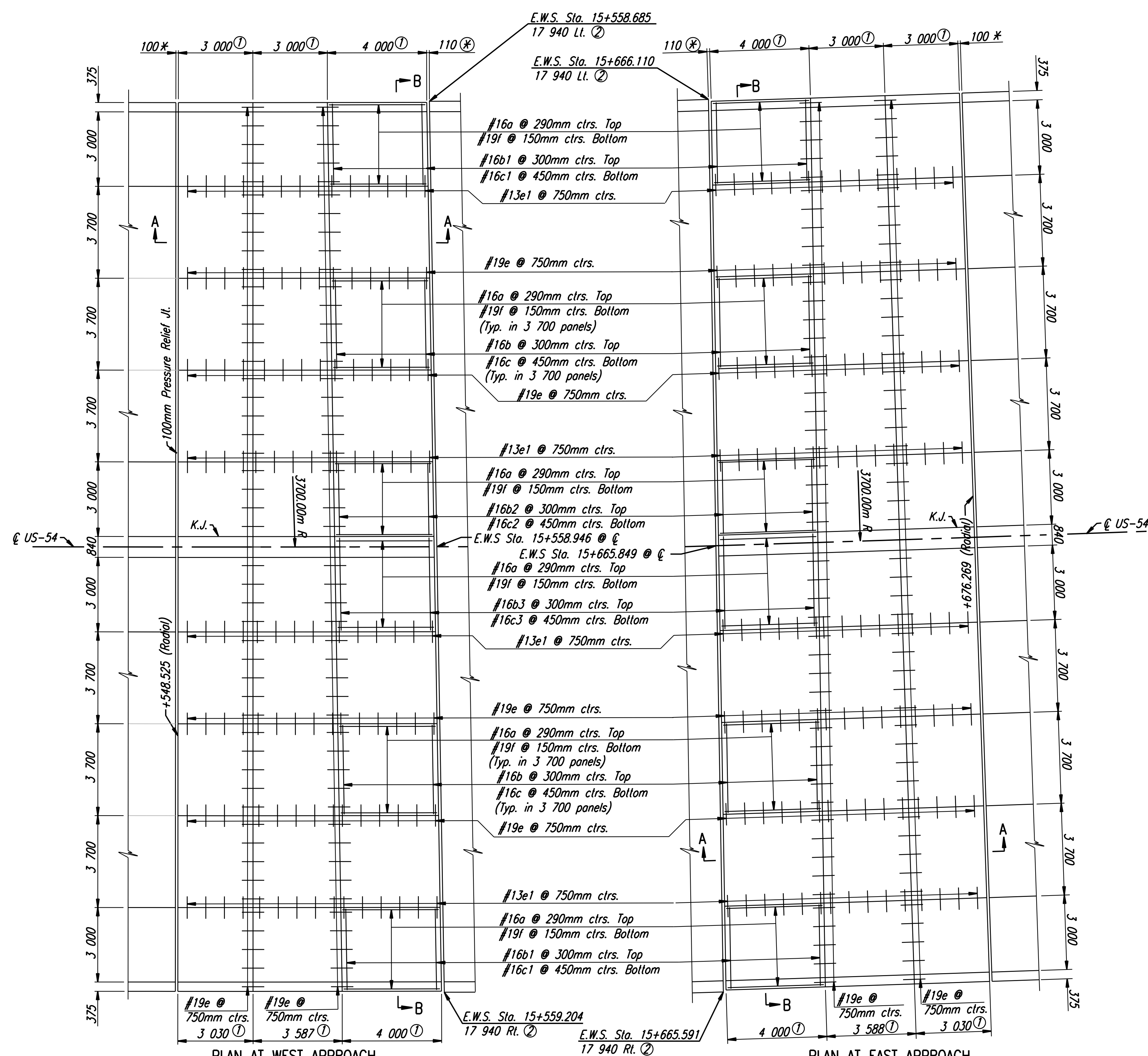
Clearance from the face of concrete for all reinforcing steel shall be 50 mm. Standard reinforcing bar hooks in accordance with the latest ACI specifications shall be used throughout.

For Sections A-A & B-B see Sh. No. 118



Note: All dimensions are out to out on bars unless noted otherwise.

BENDING DIAGRAMS



PLAN AT WEST APPROACH

PLAN AT EAST APPROACH

BILL OF MATERIALS (WEST APPROACH)												
BAR SCHEDULE												
Bar No.	a	b	b1	b2	b3	c	c1	c2	c3	e	e1	f
125	84	28	14	14	54	18	9	9	158	60	242	
Size	#16	#16	#16	#16	#16	#16	#16	#16	#16	#19	#13	#19
Length	3 900	3 950	3 625	3 250	4 050	3 600	3 275	2 900	3 700	900	900	4100
Reinforcing Steel												4662 kg
Concrete Pavement(260 mm Unit).(AE)												369.0 m ²
Expansion Joint												35 795 mm
100 mm Pressure Relief Joint												35 790 mm

BILL OF MATERIALS (EAST APPROACH)												
BAR SCHEDULE												
Bar No.	a	b	b1	b2	b3	c	c1	c2	c3	e	e1	f
125	84	28	14	14	54	18	9	9	158	60	242	
Size	#16	#16	#16	#16	#16	#16	#16	#16	#16	#19	#13	#19
Length	3 900	3 950	3 625	3 250	4 050	3 600	3 275	2 900	3 700	900	900	4100
Reinforcing Steel												4662 kg
Concrete Pavement(260 mm Unit).(AE)												369.0 m ²
Expansion Joint												35 795 mm
100 mm Pressure Relief Joint												35 790 mm

Reinforcing steel and joint lengths shown for information only.

RECORD DRAWING

DATE	
BY	
REFERENCES NOTED	
REFERENCES CHECKED	

DSNR: OPER: JGP SCALE: 1:100
 I:/1997/97362/As-Built/dgn/s/Sh 117-App/Slab-maize.dgn Last Rev: 8-14-07 By: gdr

No.	Revisions	By	Date
CITY OF WICHITA			
CONCRETE BRIDGE APPROACH PAVEMENT E.B. & W.B. US-54 OVER MAIZE ROAD			
SEDGWICK COUNTY			
Professional Engineering Consultants, P.A. 303 S. TOPEKA • WICHITA, KANSAS 67202 316-262-2691 • FAX 316-262-3003			
Designed by	WDH	Checked by	
Drawn by	JGP	Date	April, 2002
		Job No.	97362