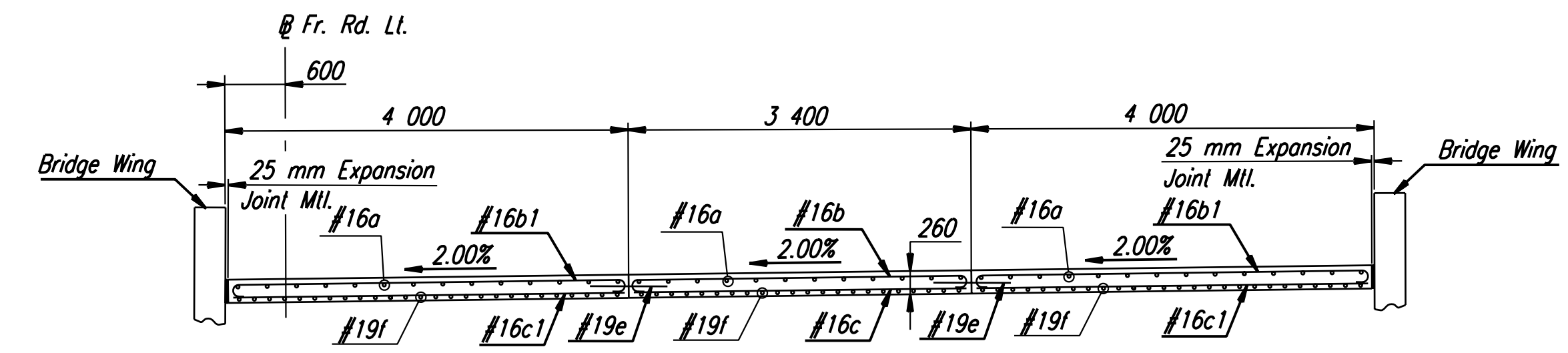


SECTION A-A

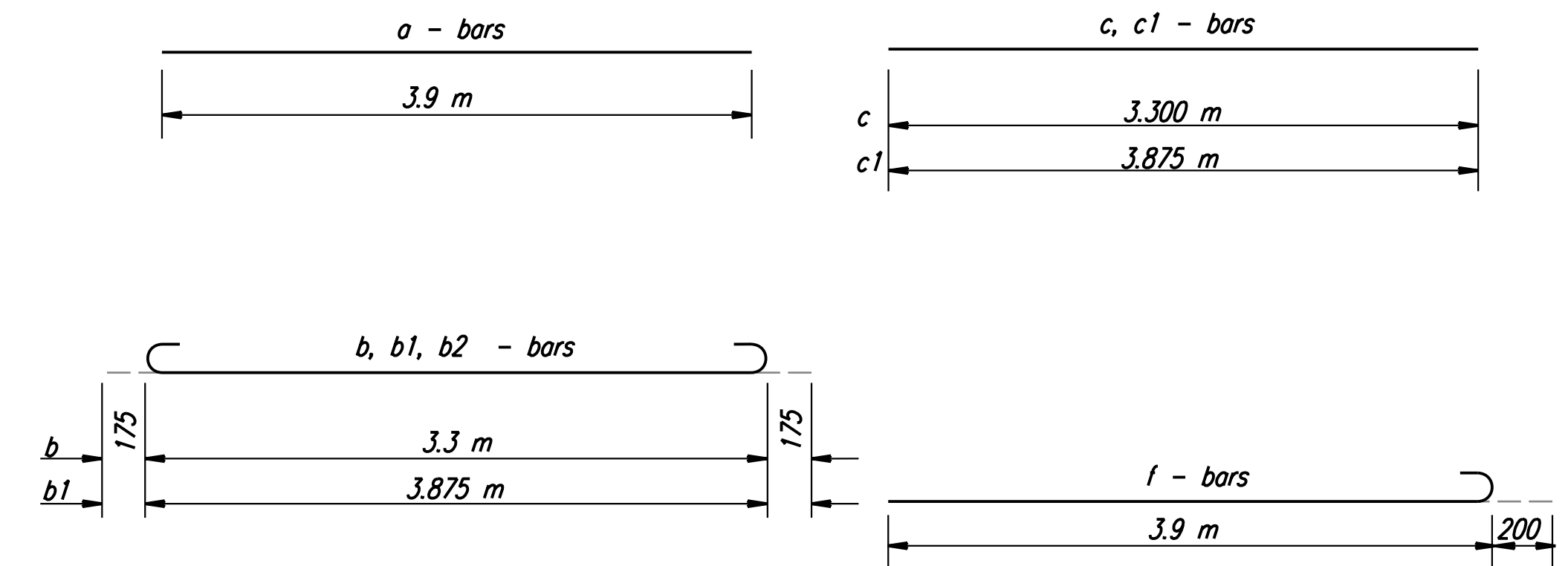


SECTION B-B

- \* 100 mm Pressure relief joint. See Standard Drawing RD661 SI, Sh. No. 126.
- ⊗ Expansion joint Type B. See Standard Drawing RD662 SI, Sh. No. 127 for details.
- ≠ Contractor has the option of substituting a Tied Keyed Construction Joint.
- ① Measured along back of CSB.

GENERAL NOTE

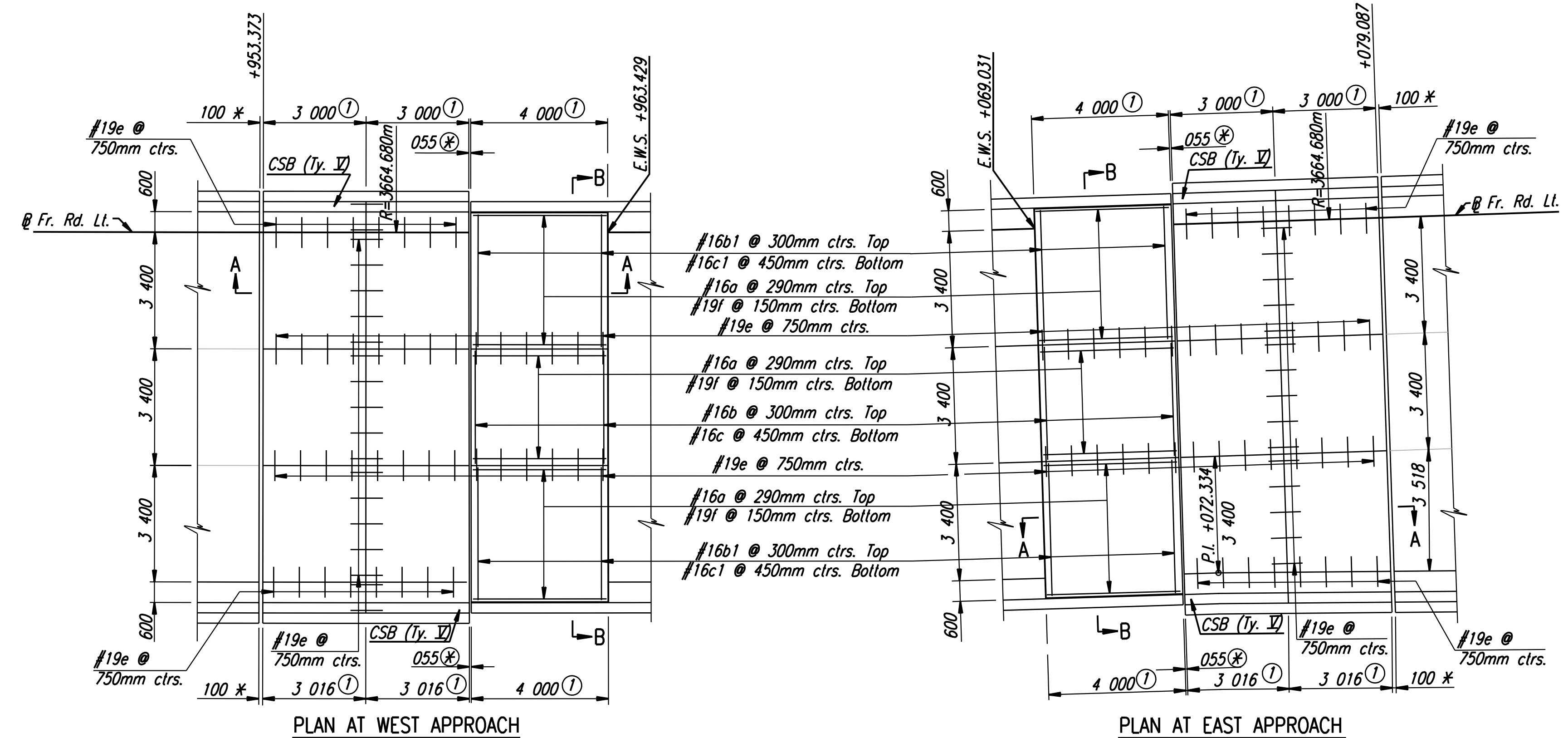
Special Concrete Bridge Approach shall be paid for as sq. m of Concrete Pavement (260 mm Unit)(A.E.) and includes all work and materials required to construct the approach slab as shown on this sheet.  
 All work and materials required for installation of expansion joints and pressure relief joints shall be subsidiary to this bid item.  
 All preformed joint material shall be installed perpendicular to pavement surface. Formed joints shall be edged with 6 mm radius tool for length of joint.  
 At the Contractor's option #13 x 900 mm tie bars @ 380 mm centers may be substituted for the #19 e bars at 750 mm centers.  
 All reinforcing steel shall be epoxy coated.  
 See Standard Drawing RD661 SI for details of joints & reinforcing mesh.  
 Clearance from the face of concrete for all reinforcing steel shall be 50 mm.  
 Standard reinforcing bar hooks in accordance with the latest ACI specifications shall be used throughout.



BENDING DIAGRAMS

Note: All dimensions are out to out on bars unless noted otherwise.

See Sh. No. 230 for CSB Type V Special Details.



PLAN AT WEST APPROACH

PLAN AT EAST APPROACH

BILL OF MATERIALS (WEST APPROACH)								
BAR SCHEDULE								
Bar No.	a	b	b1	c	c1	e	f	
41	14	28	9	18	63	77		
Size	#16	#16	#16	#16	#16	#19	#19	
Length	3 900	3 650	4 225	3 300	3 875	900	4 100	
Reinforcing Steel							1 498	kg
Concrete Pavement(260 mm Unit)(AE)							106.8	m <sup>2</sup>
Expansion Joint (Type B)							12 000	mm
100 mm Pressure Relief Joint							12 600	mm

BILL OF MATERIALS (EAST APPROACH)								
BAR SCHEDULE								
Bar No.	a	b	b1	c	c1	e	f	
41	14	28	9	18	63	77		
Size	#16	#16	#16	#16	#16	#19	#19	
Length	3 900	3 650	4 225	3 300	3 875	900	4 100	
Reinforcing Steel							1 498	kg
Concrete Pavement(260 mm Unit)(AE)							107.1	m <sup>2</sup>
Expansion Joint							12 000	mm
100 mm Pressure Relief Joint							12 718	mm

Reinforcing steel and joint lengths shown for information only.

RECORD DRAWING

DATE	
BY	
REFERENCES NOTED	
REFERENCES CHECKED	

DSNR: OPER: JGP SCALE: 1:100 i:/1997/97362/As-Built/dgn s/Sh 121-ApprSlab-cow\_wb\_fr.dgn Last Rev: 8-14-07 By: gdr

Revisions				By	Date
CITY OF WICHITA					
CONCRETE BRIDGE APPROACH PAVEMENT W. B. FRONTAGE RD. OVER COWSKIN CREEK					
SEDGWICK COUNTY					
<b>Professional Engineering Consultants, P.A.</b> <small>303 S. TOPEKA • WICHITA, KANSAS 67202 316-262-2691 • FAX 316-262-3003</small>					
Designed by	WDH	Checked by			
Drawn by	JGP	Date	April, 2002	Job No.	97362