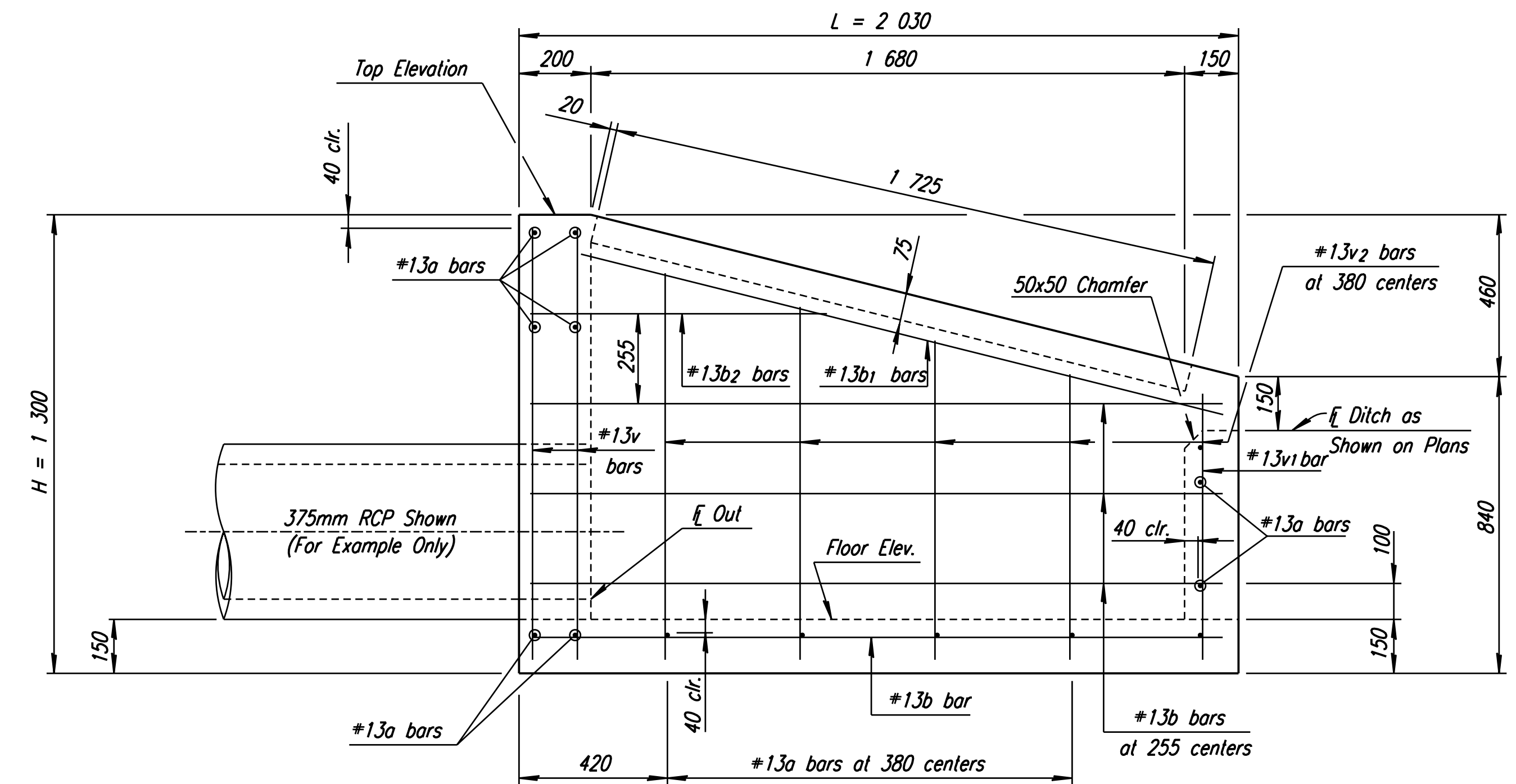
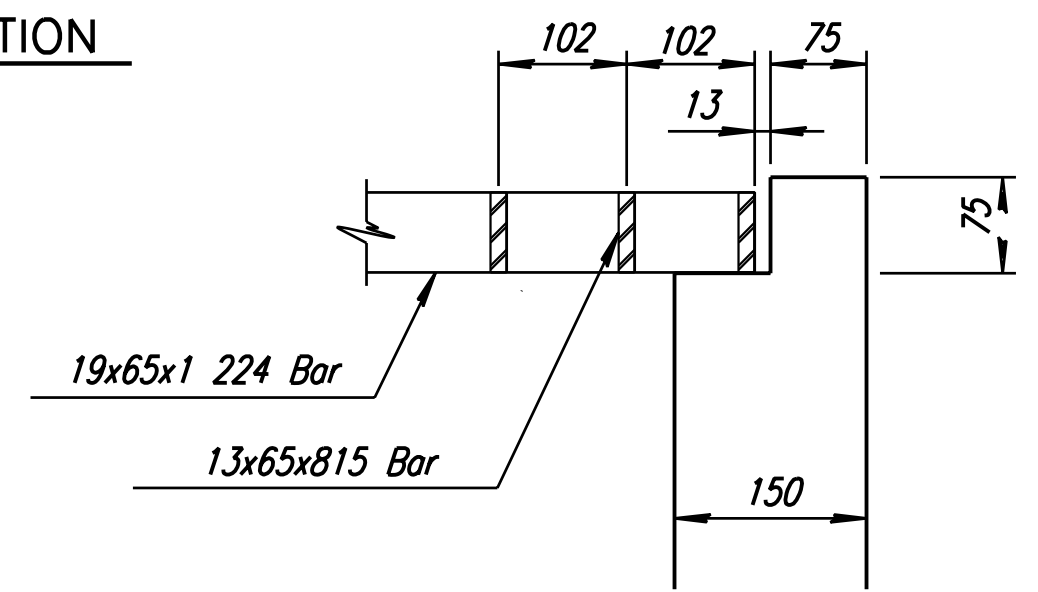


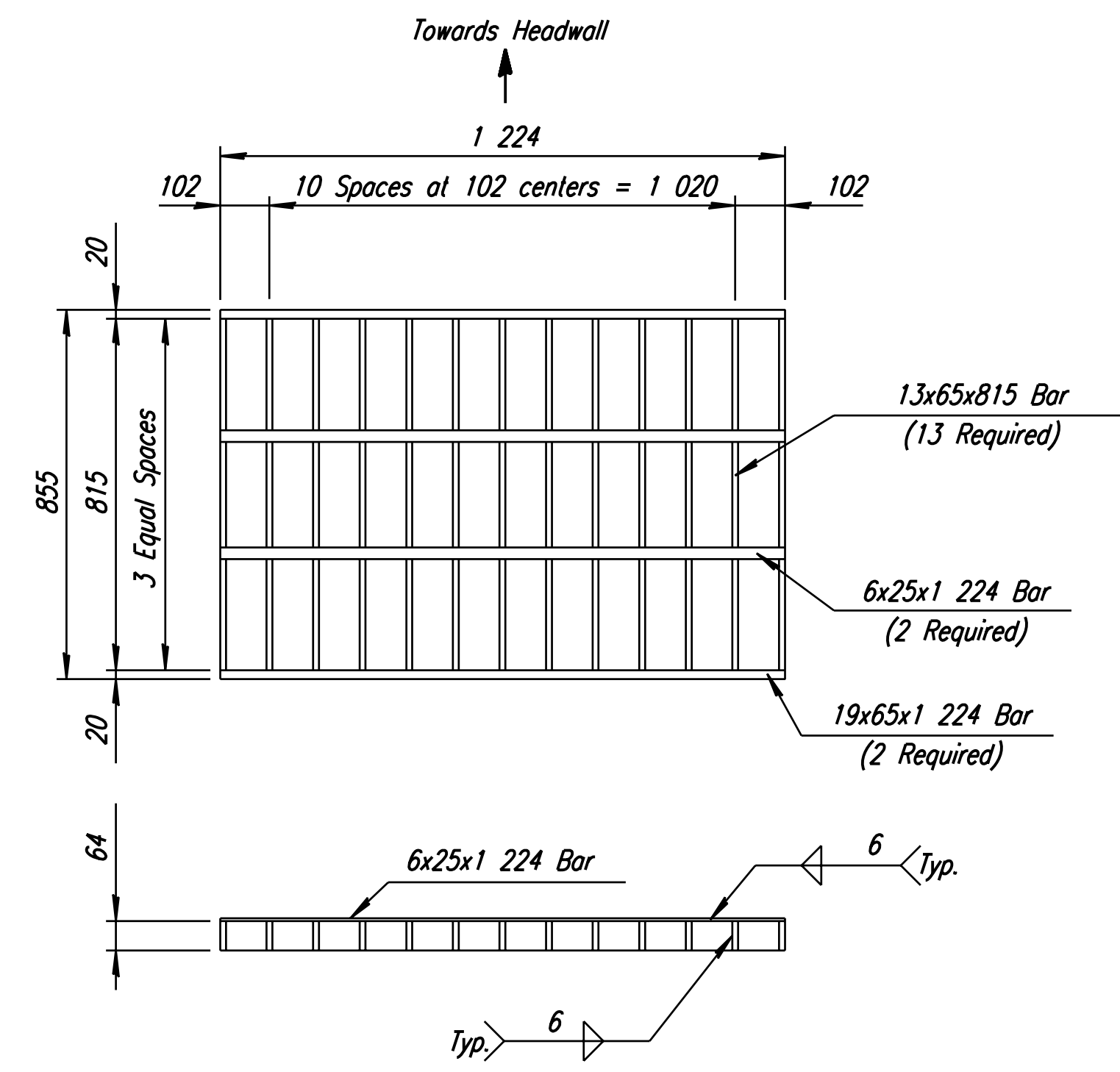
PLAN



ELEVATION

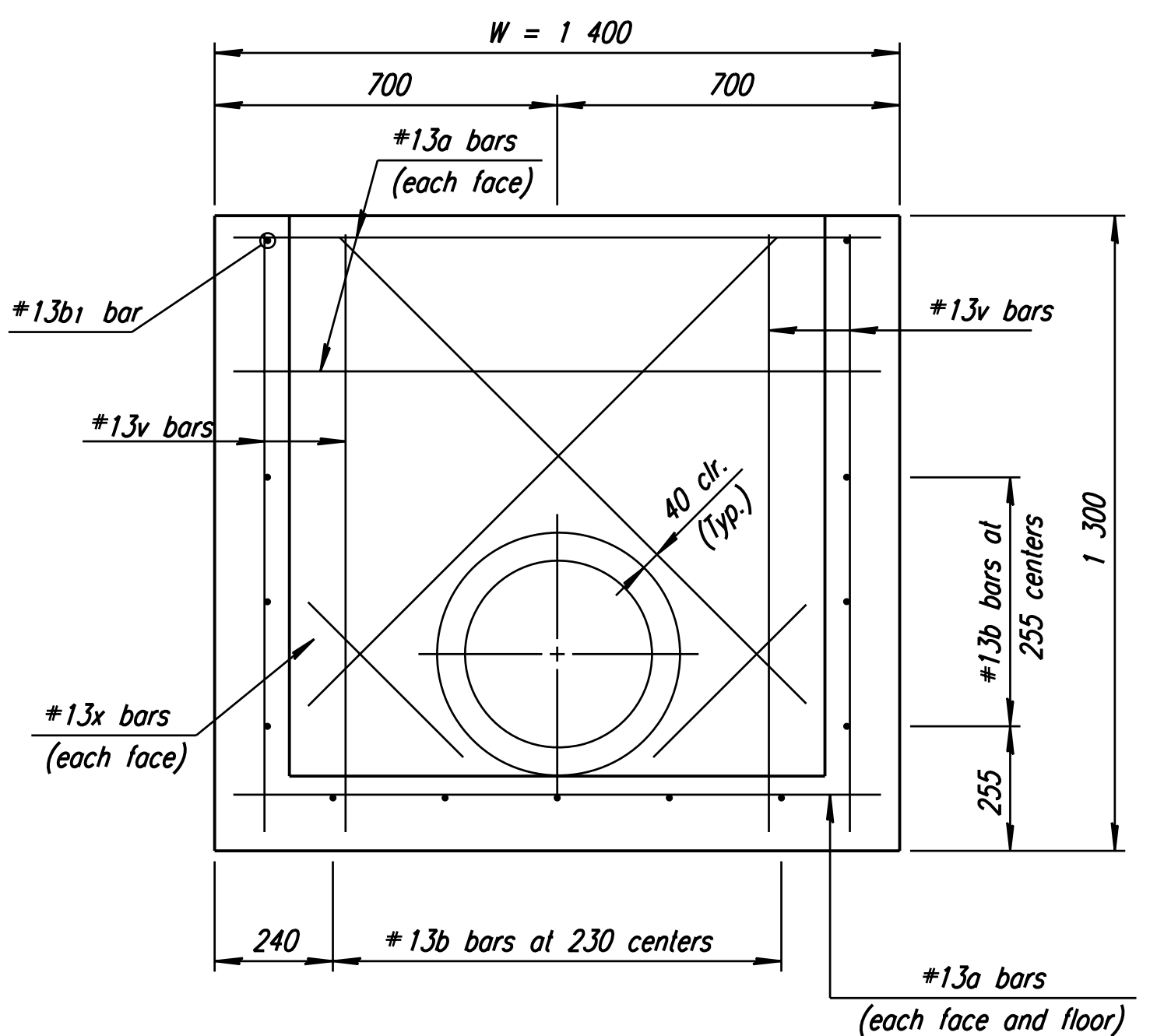


SECTION A-A



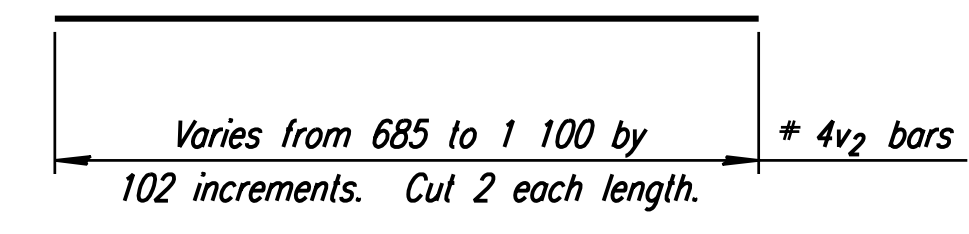
STRUCTURAL STEEL GRATE (TYPE Z)

94 Kg Each
(2 Required)



SECTION THRU HEADWALL

375 RCP Shown (For Example Only)



CUTTING DIAGRAM

General Notes

Class A Concrete shall be used throughout. At the Contractors option, Class A Concrete (AE) may be used. Bevel all exposed edges with a 20mm triangular molding or an approved edging tool. No deductions in concrete quantities have been made for pipe openings.

Reinforcing Steel shall be a minimum Grade 420 ASTM A615M.

All dimensions relative to placement of reinforcing are to the centerline of bars unless otherwise noted. All Clearances are 40mm unless otherwise noted.

Pipes will enter and leave the Inlet at various positions. Field bend or cut reinforcing to clear pipes.

Inlet invert shall be shaped with unreinforced Class A Concrete as shown in various examples on Standard No. RD730SI.

Inlets shall be measured and paid for at the contract unit price bid per each. This shall be considered full compensation for all excavation, backfilling, materials, labor, equipment, tools and incidentals necessary to complete the work.

Structural steel used to fabricate the grate shall comply with ASTM A-36M. The unit shall be hot dipped, galvanized after fabrication, in accordance with ASTM A123 except the mass of coating shall average not less than 0.61 kg/square meter of actual surface and no individual test shall show less than 0.55 kg/square meter of actual surface area.

BILL OF MATERIALS FOR DITCH INLET

| Bar | No. | Size | Length |
|----------------------|-----|------|-------------|
| a | 14 | #13 | 1 320 |
| b | 13 | #13 | 1 950 |
| b1 | 2 | #13 | 2 005 |
| b2 | 2 | #13 | 0 840 |
| v | 8 | #13 | 1 220 |
| v1 | 5 | #13 | 0 610 |
| v2 | 10 | #13 | * |
| x | 8 | #13 | ** |
| Class III Excavation | | | 5.72 Cu. M. |
| Class A Concrete | | | 1.32 Cu. M. |
| Reinforcing Steel | | | 76.9 Kg |
| Structural Steel | | | 188.0 Kg. |

* See Cutting Diagram.

** Length Varies-Cut to meet pipe opening requirements. (760mm length used for Reinforced Steel weight).

| | | | |
|---|-----------|------------|-------------|
| 1 | | | |
| No. | Revisions | By | Date |
| CITY OF WICHITA | | | |
| DITCH INLET | | | |
| SEDGWICK COUNTY | | | |
| Professional Engineering Consultants, P.A. 303 S. TOPEKA • WICHITA, KANSAS 67202 316-262-2691 • FAX 316-262-3003 | | | |
| Designed by | WDH | Checked by | |
| Drawn by | DJW | Date | April, 2002 |
| | | Job No. | 97362 |

RECORD DRAWING

OPER: JCP SCALE: 1:1997/97362/As-Built/dgn's/Sh 140-dmilt.dgn Last Rev: 8-17-07 By: gdr