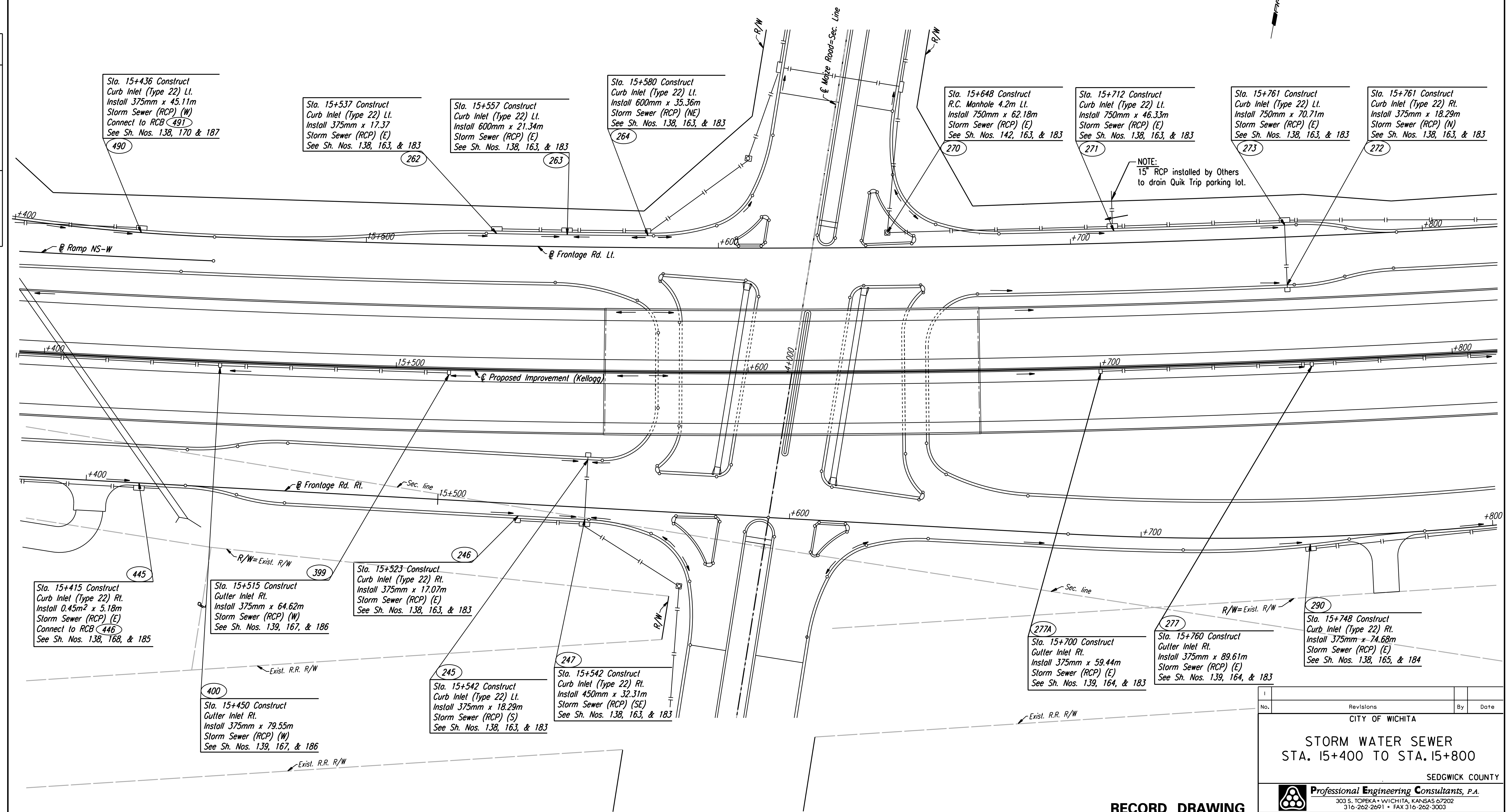


FHWA REGION NO.	STATE	PROJECT NO.	YEAR	SHEET NO.	TOTAL SHEETS
7	KANSAS	54-87 K-6657-01	2002	155	1122

See Maize Rd. Plans for Storm Water Sewer on Maize Rd.

DATE	
BY	
REFERENCES NOTED	
REFERENCES CHECKED	



Sta. 15+436 Construct Curb Inlet (Type 22) Lt. Install 375mm x 45.11m Storm Sewer (RCP) (W) Connect to RCB 491 See Sh. Nos. 138, 170 & 187

Sta. 15+537 Construct Curb Inlet (Type 22) Lt. Install 375mm x 17.37 Storm Sewer (RCP) (E) See Sh. Nos. 138, 163, & 183

Sta. 15+557 Construct Curb Inlet (Type 22) Lt. Install 600mm x 21.34m Storm Sewer (RCP) (E) See Sh. Nos. 138, 163, & 183

Sta. 15+580 Construct Curb Inlet (Type 22) Lt. Install 600mm x 35.36m Storm Sewer (RCP) (NE) See Sh. Nos. 138, 163, & 183

Sta. 15+648 Construct R.C. Manhole 4.2m Lt. Install 750mm x 62.18m Storm Sewer (RCP) (E) See Sh. Nos. 142, 163, & 183

Sta. 15+712 Construct Curb Inlet (Type 22) Lt. Install 750mm x 46.33m Storm Sewer (RCP) (E) See Sh. Nos. 138, 163, & 183

Sta. 15+761 Construct Curb Inlet (Type 22) Lt. Install 750mm x 70.71m Storm Sewer (RCP) (E) See Sh. Nos. 138, 163, & 183

Sta. 15+761 Construct Curb Inlet (Type 22) Rt. Install 375mm x 18.29m Storm Sewer (RCP) (N) See Sh. Nos. 138, 163, & 183

NOTE: 15" RCP installed by Others to drain Quik Trip parking lot.

Sta. 15+415 Construct Curb Inlet (Type 22) Rt. Install 0.45m<sup>2</sup> x 5.18m Storm Sewer (RCP) (E) Connect to RCB 446 See Sh. Nos. 138, 168, & 185

Sta. 15+515 Construct Gutter Inlet Rt. Install 375mm x 64.62m Storm Sewer (RCP) (W) See Sh. Nos. 139, 167, & 186

Sta. 15+523 Construct Curb Inlet (Type 22) Rt. Install 375mm x 17.07m Storm Sewer (RCP) (E) See Sh. Nos. 138, 163, & 183

Sta. 15+450 Construct Gutter Inlet Rt. Install 375mm x 79.55m Storm Sewer (RCP) (W) See Sh. Nos. 139, 167, & 186

Sta. 15+542 Construct Curb Inlet (Type 22) Lt. Install 375mm x 18.29m Storm Sewer (RCP) (S) See Sh. Nos. 138, 163, & 183

Sta. 15+542 Construct Curb Inlet (Type 22) Rt. Install 450mm x 32.31m Storm Sewer (RCP) (SE) See Sh. Nos. 138, 163, & 183

Sta. 15+700 Construct Gutter Inlet Rt. Install 375mm x 59.44m Storm Sewer (RCP) (E) See Sh. Nos. 139, 164, & 183

Sta. 15+760 Construct Gutter Inlet Rt. Install 375mm x 89.61m Storm Sewer (RCP) (E) See Sh. Nos. 139, 164, & 183

Sta. 15+748 Construct Curb Inlet (Type 22) Rt. Install 375mm x 74.68m Storm Sewer (RCP) (E) See Sh. Nos. 138, 165, & 184

No.	Revisions	By	Date

CITY OF WICHITA  
**STORM WATER SEWER**  
**STA. 15+400 TO STA. 15+800**  
 SEDGWICK COUNTY

**Professional Engineering Consultants, P.A.**  
 303 S. TOPEKA • WICHITA, KANSAS 67202  
 316-262-2691 • FAX 316-262-3003

**RECORD DRAWING**

Designed by	RCH	Checked by	WDH
Drawn by	JGP	Date	April, 2002
		Job No.	97362

DSNR: JPS OPER: JGP SCALE: 1:500  
 i:/1997/97362/As-Built/sgn's/Sha\_155-sws-dgn/154.dgn Last Rev: 8-2-07 By: gdr