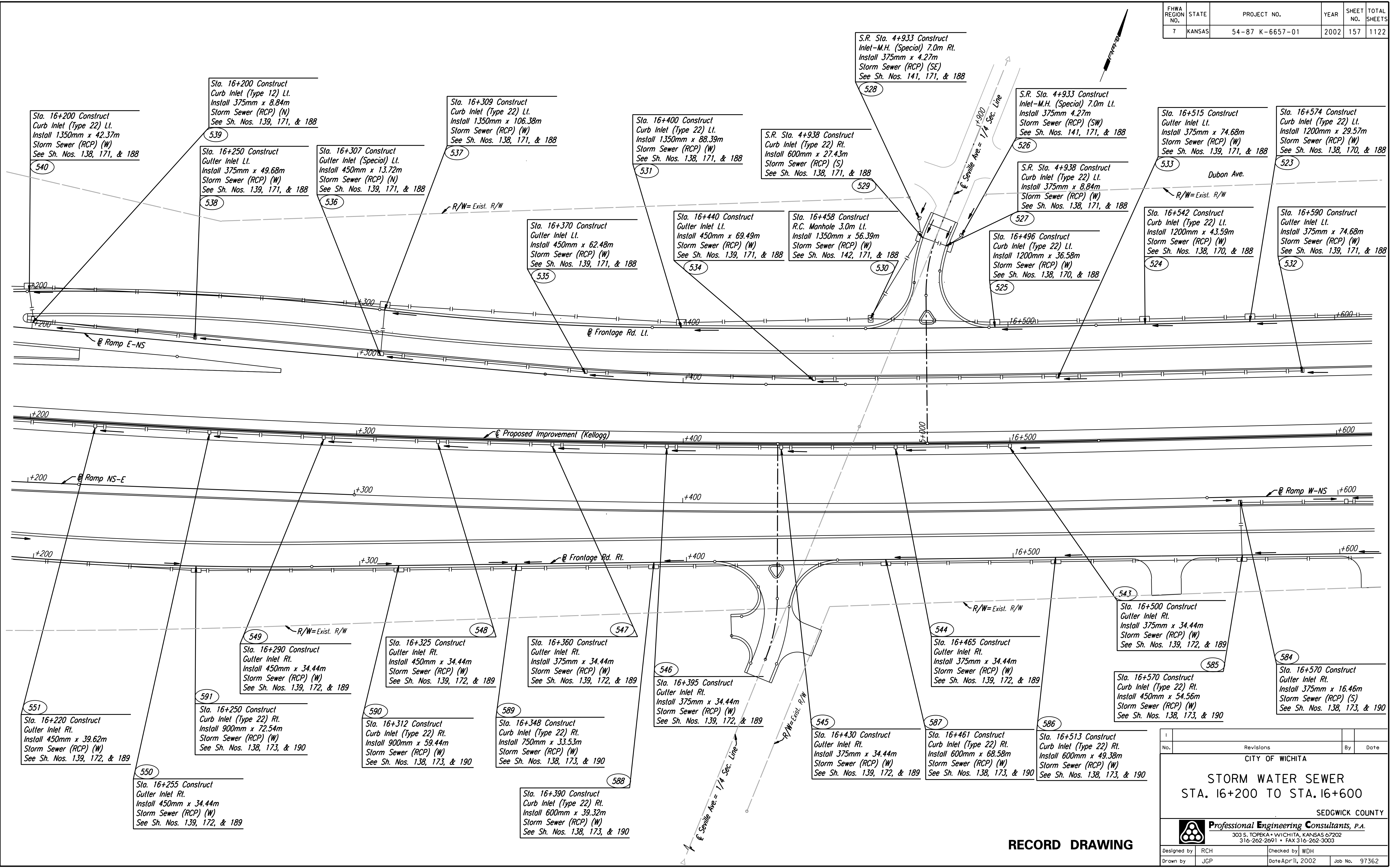


FHWA REGION NO.	STATE	PROJECT NO.	YEAR	SHEET NO.	TOTAL SHEETS
7	KANSAS	54-87 K-6657-01	2002	157	1122

DATE	
BY	
REFERENCES NOTED	
REFERENCES CHECKED	

DSNR: JPS OPER: JGP SCALE: 1:500
 K:\1997\97362\As-Builts\dgn's\Sh 157-sws162.dgn Last Rev: 8-2-07 By: gar



CITY OF WICHITA			
STORM WATER SEWER			
STA. 16+200 TO STA. 16+600			
SEDGWICK COUNTY			
Professional Engineering Consultants, P.A.			
303 S. TOPEKA • WICHITA, KANSAS 67202 316-262-2691 • FAX 316-262-3003			
Designed by	RCH	Checked by	WDH
Drawn by	JGP	Date	Apr 11, 2002
		Job No.	97362

RECORD DRAWING