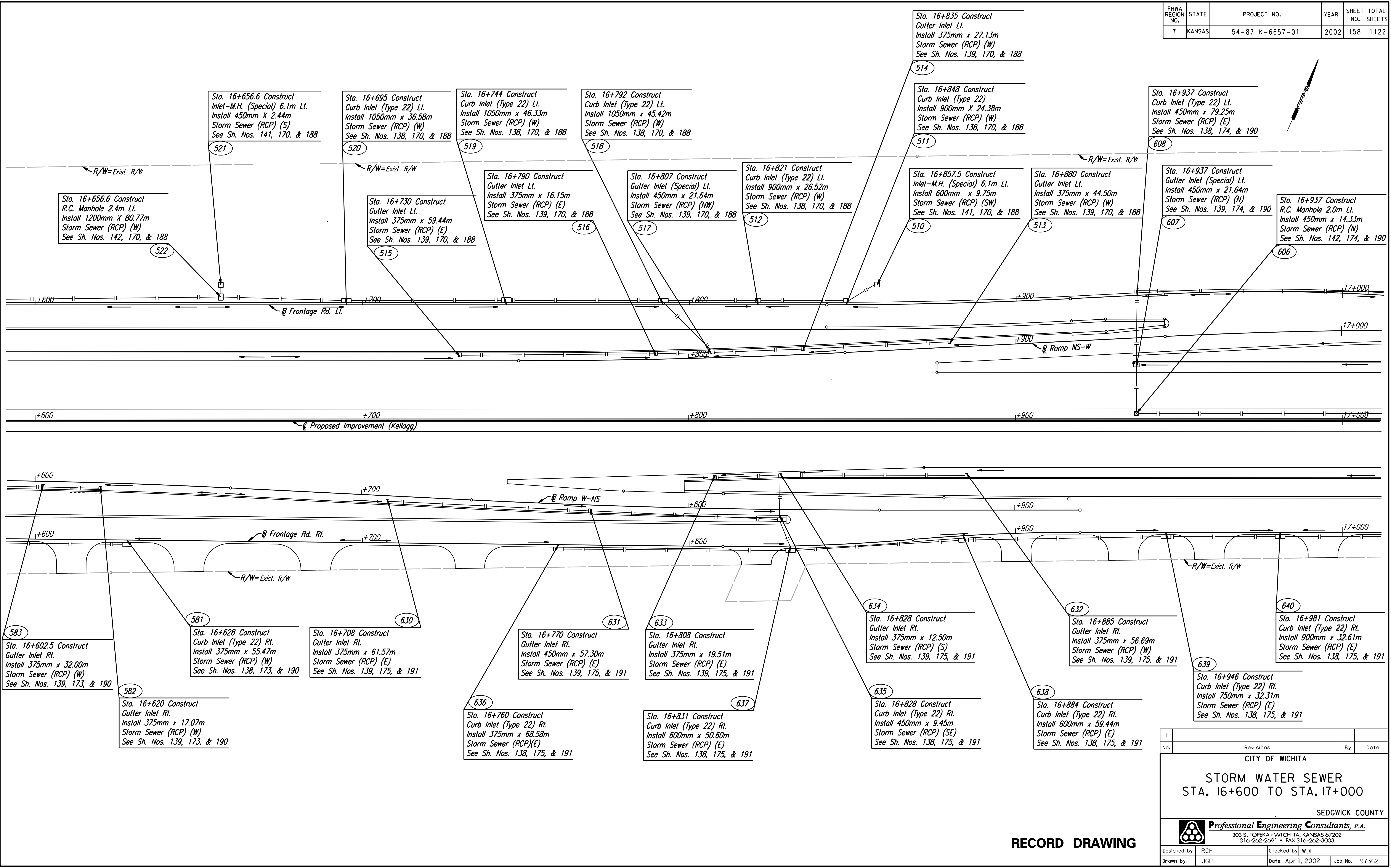


FHWA REGION NO.	STATE	PROJECT NO.	YEAR	SHEET NO.	TOTAL SHEETS
7	KANSAS	54-87 K-6657-01	2002	158	1122

DATE	
BY	
REFERENCES NOTED	
REFERENCES CHECKED	



DSNR: JPS OPER: JGP SCALE: 1:500  
 i:/1997/97362/As-Builts/dgn's/Sh 158-sws166.dgn Last Rev: 8-2-07 By: gdr

Revisions				By	Date
No.					

CITY OF WICHITA

**STORM WATER SEWER**  
STA. 16+600 TO STA. 17+000

SEDGWICK COUNTY

**Professional Engineering Consultants, P.A.**  
 303 S. TOPEKA • WICHITA, KANSAS 67202  
 316-262-2691 • FAX 316-262-3003

Designed by	RCH	Checked by	WDH
Drawn by	JGP	Date	Apr 11, 2002
		Job No.	97362

**RECORD DRAWING**