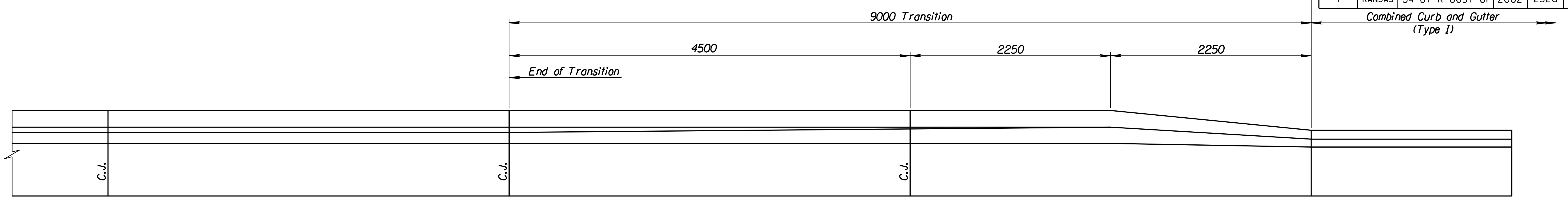
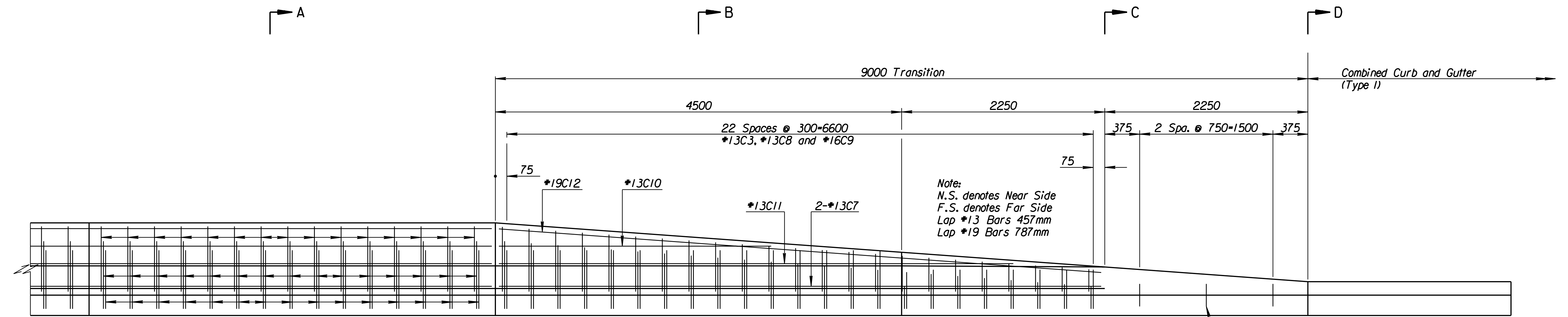


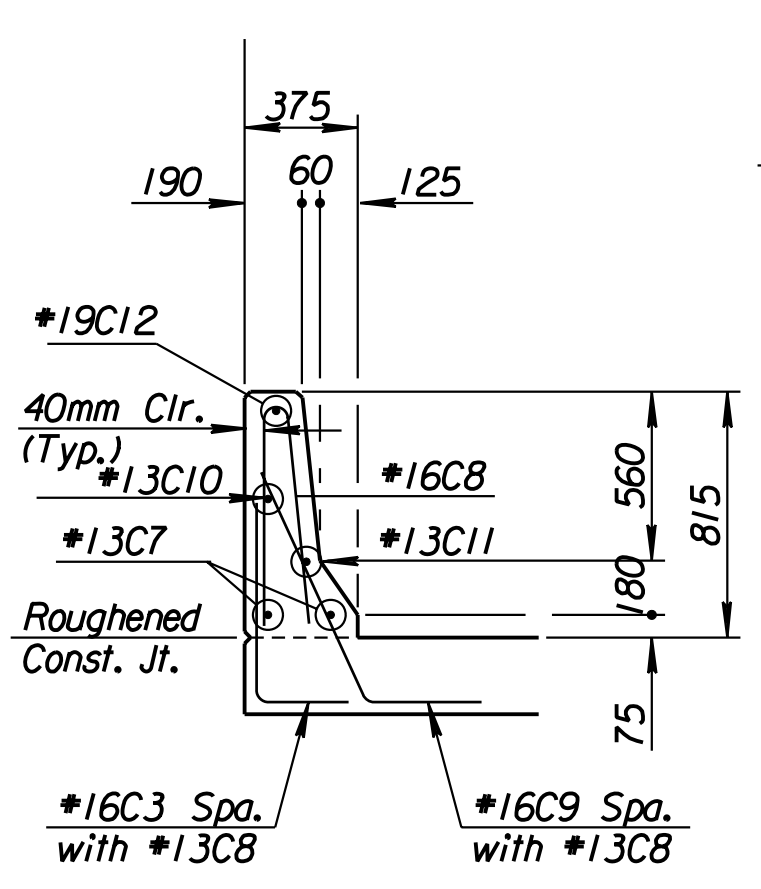
FHWA REGION NO.	STATE	PROJECT NO.	YEAR	SHEET NO.	TOTAL SHEETS
7	KANSAS	54-87 K-6657-01	2002	232a	1122



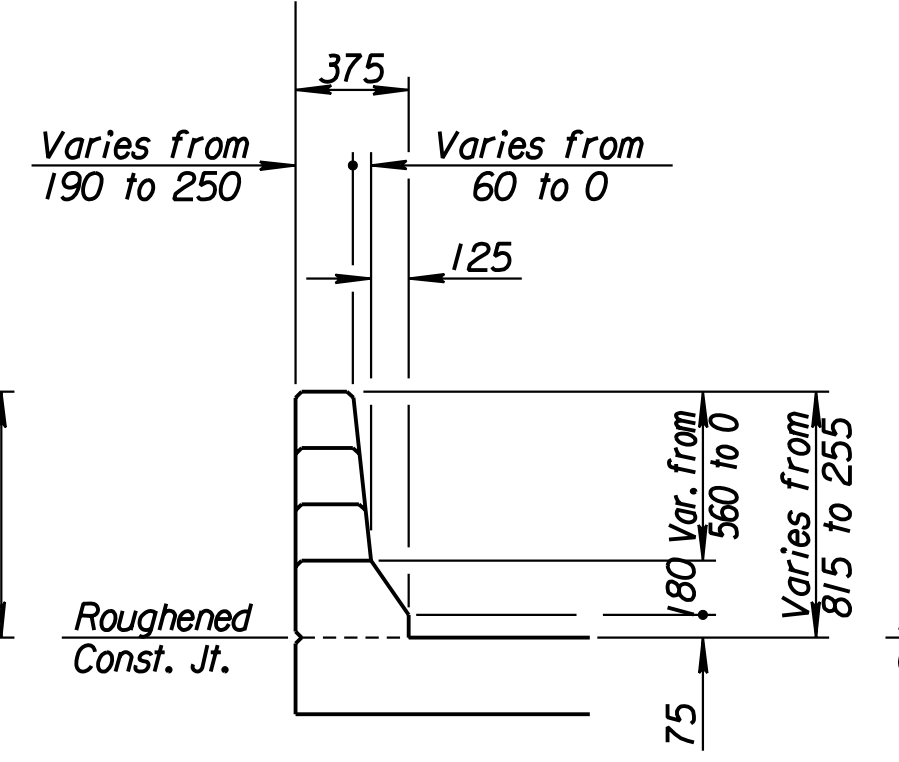
PLAN



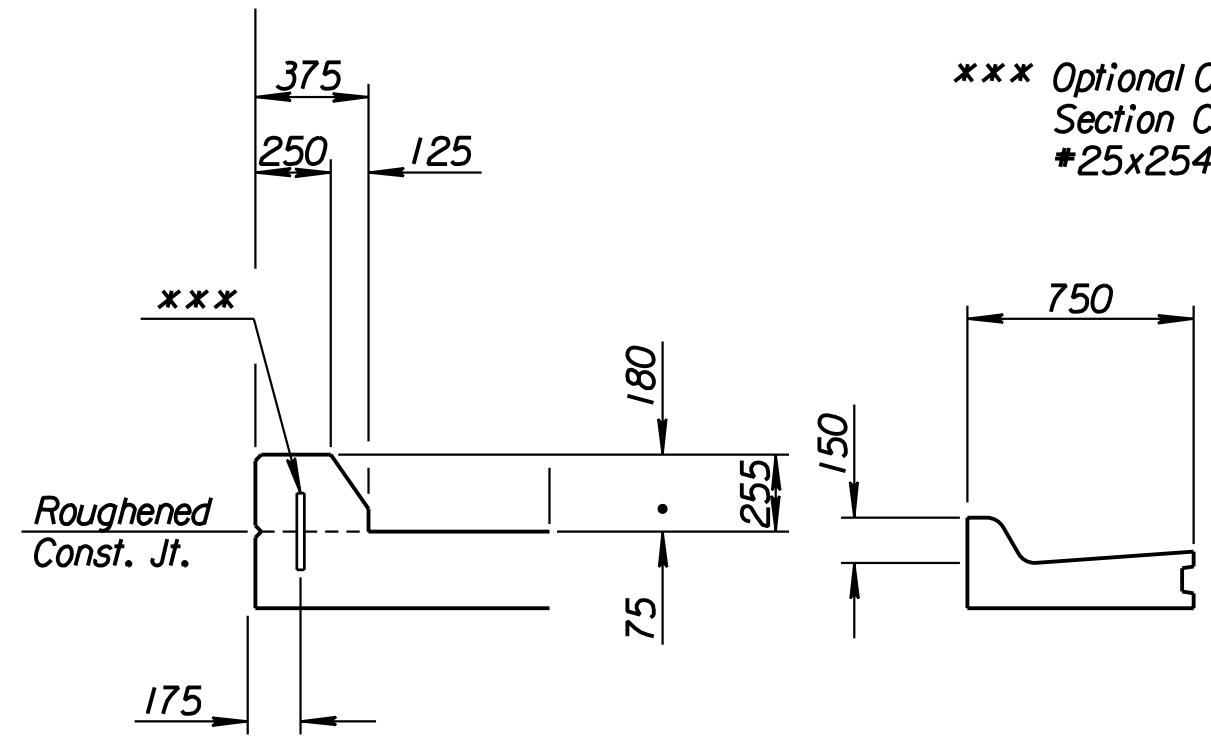
ELEVATION



SECTION A-A

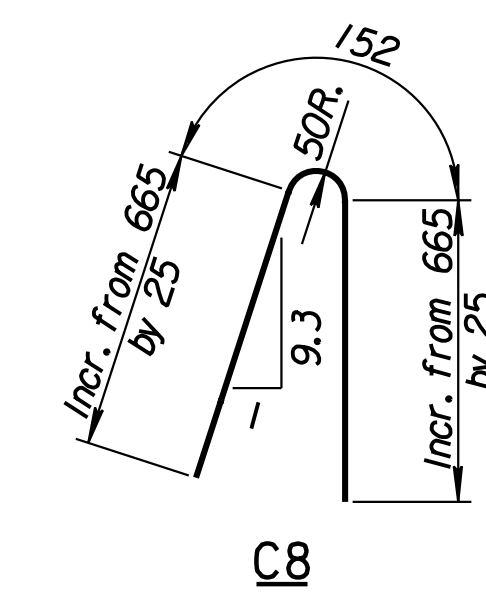
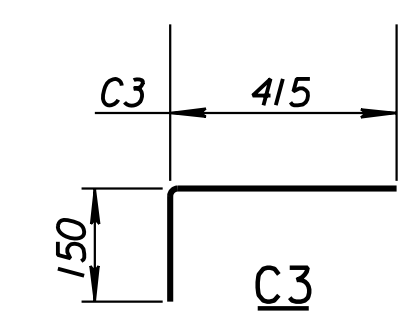


SECTION B-B



SECTION C-C

SECTION D-D  
Special Flowline Modification  
Required (See Paving Plan)



REINFORCING STEEL							
Straight Bars				Bent Bars			
Mark	No.	Size	Length	Mark	No.	Size	Length
C7	2	#13	6700				
C10	1	#13	2600	C3	23	#16	575
C11	1	#13	5850	C8	23	#16	Varies
C12	1	#19	6750	C9	23	#16	795

BENDING DIAGRAMS  
Dimensions are out to out of bars

**General Notes:**  
The Concrete Safety Barrier shall be constructed of Class AAA Concrete (AE) and Reinforcing Steel complying to A.S.T.M. Designation A-615M-96, Grade 420. All bar clearances shall be 40mm unless otherwise noted.  
Where adjacent to Concrete Pavement, Contraction Joints shall Match those in the adjacent Pavement.

Concrete Safety Barrier shall be measured per lineal meter. The amount of completed and accepted work shall be paid for at the Contract Unit Price Bid for "Concrete Safety Barrier (Type II)". This Price shall be considered full compensation for furnishing all material, equipment and labor necessary to complete the work.

No.	Revisions	By	Date
KANSAS DEPARTMENT OF TRANSPORTATION			
West Kellogg CONCRETE SAFETY BARRIER			
SEDGWICK COUNTY			
Professional Engineering Consultants, P.A. 303 S. TOPEKA • WICHITA, KANSAS 67202 316-262-2691 • FAX 316-262-3003			
Designed by	R.A.S.	Checked by	
Drawn by	W.L.L.	Date	Job No. 97362

RECORD DRAWING

Drawn by: wll  
 Plotted by: gdr  
 I:\1997\97362\As-Builts\agrs\Sh 232a-BARRIERTransition.dgn Last Rev: 8-21-07 By: gdr