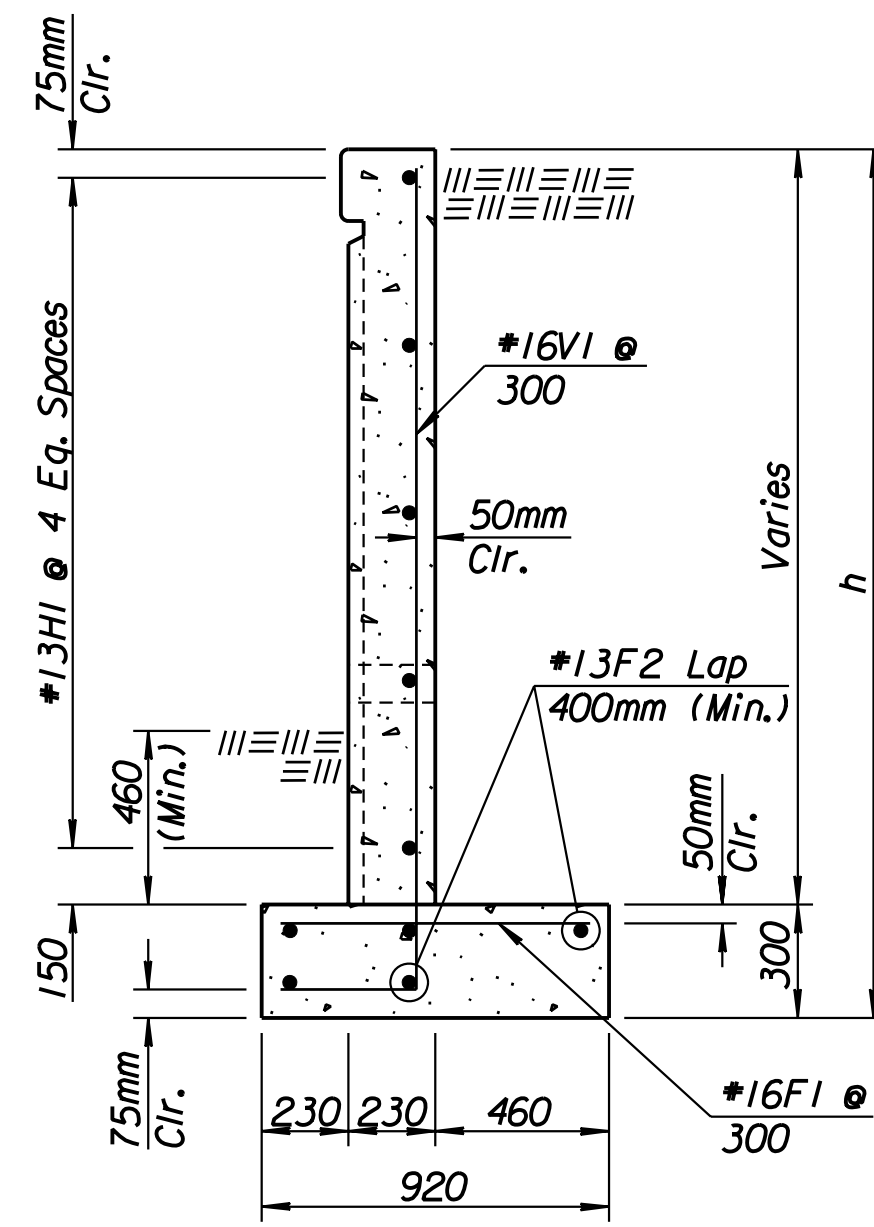
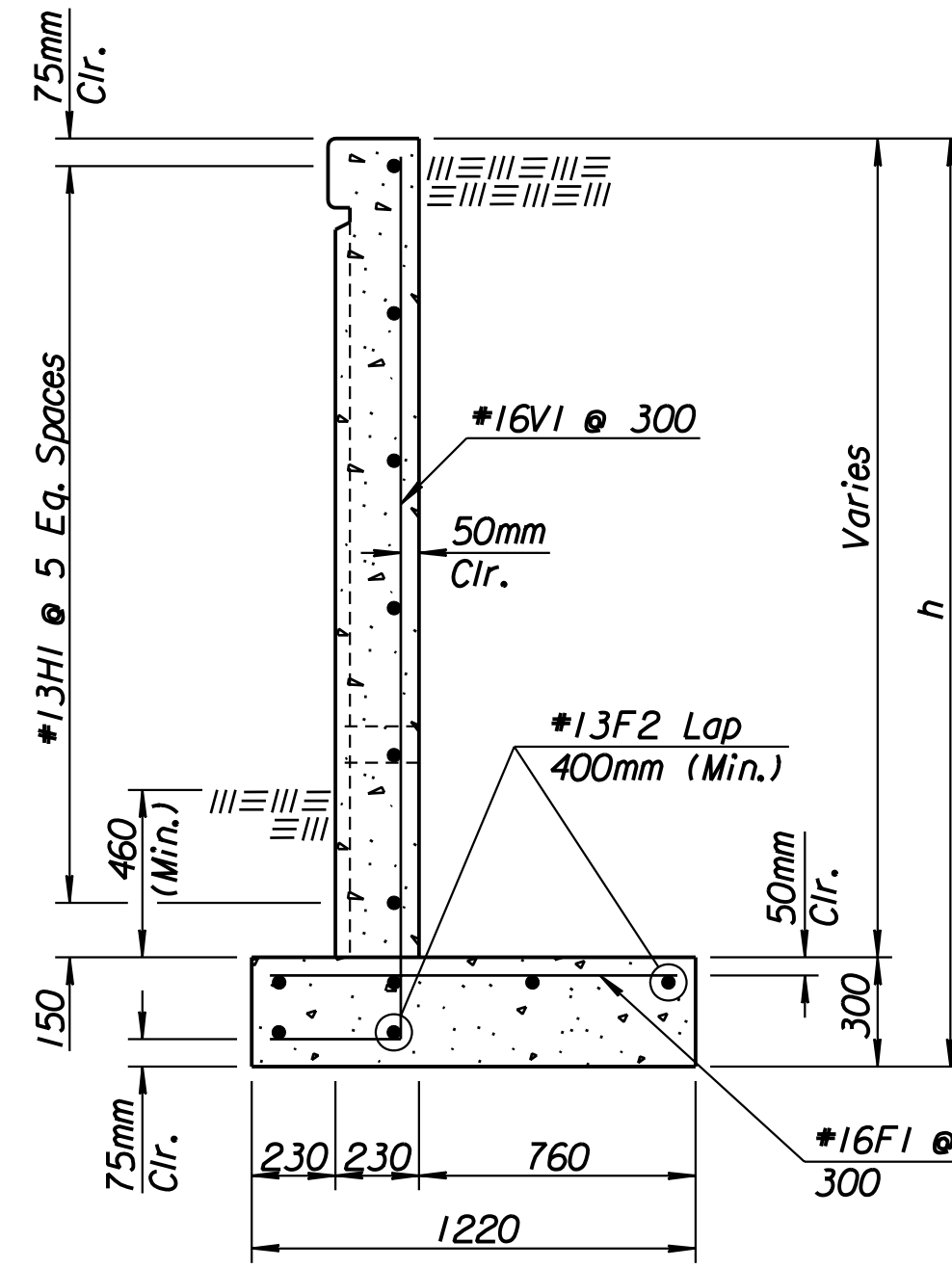


| | | | | |
|--------|-----------------|------|-----------|--------------|
| STATE | PROJECT NO. | YEAR | SHEET NO. | TOTAL SHEETS |
| KANSAS | 54-87 K-6657-01 | 2002 | 238A | 1122 |

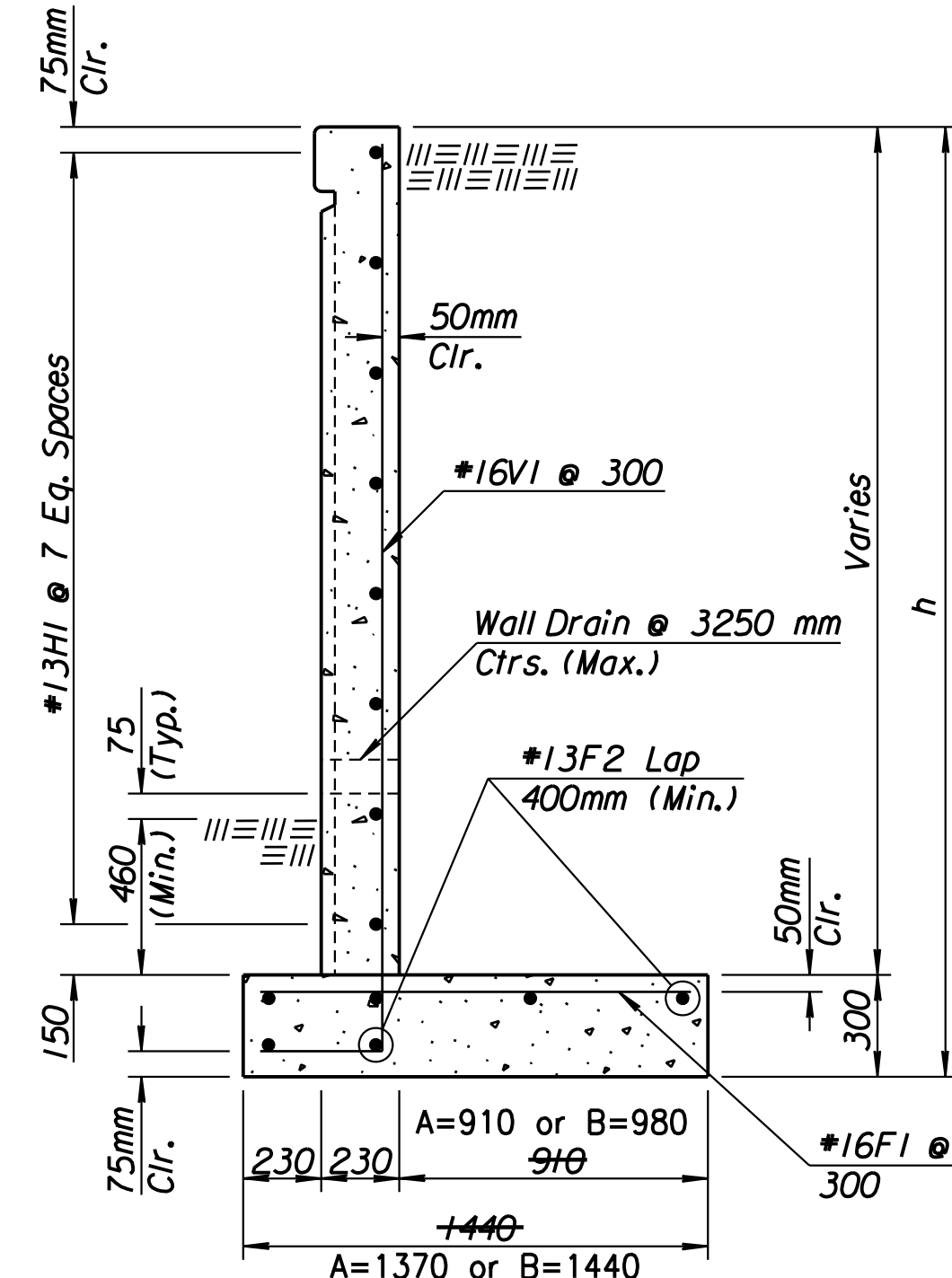
| | |
|--------------------|--|
| DATE | |
| BY | |
| REFERENCES NOTED | |
| REFERENCES CHECKED | |



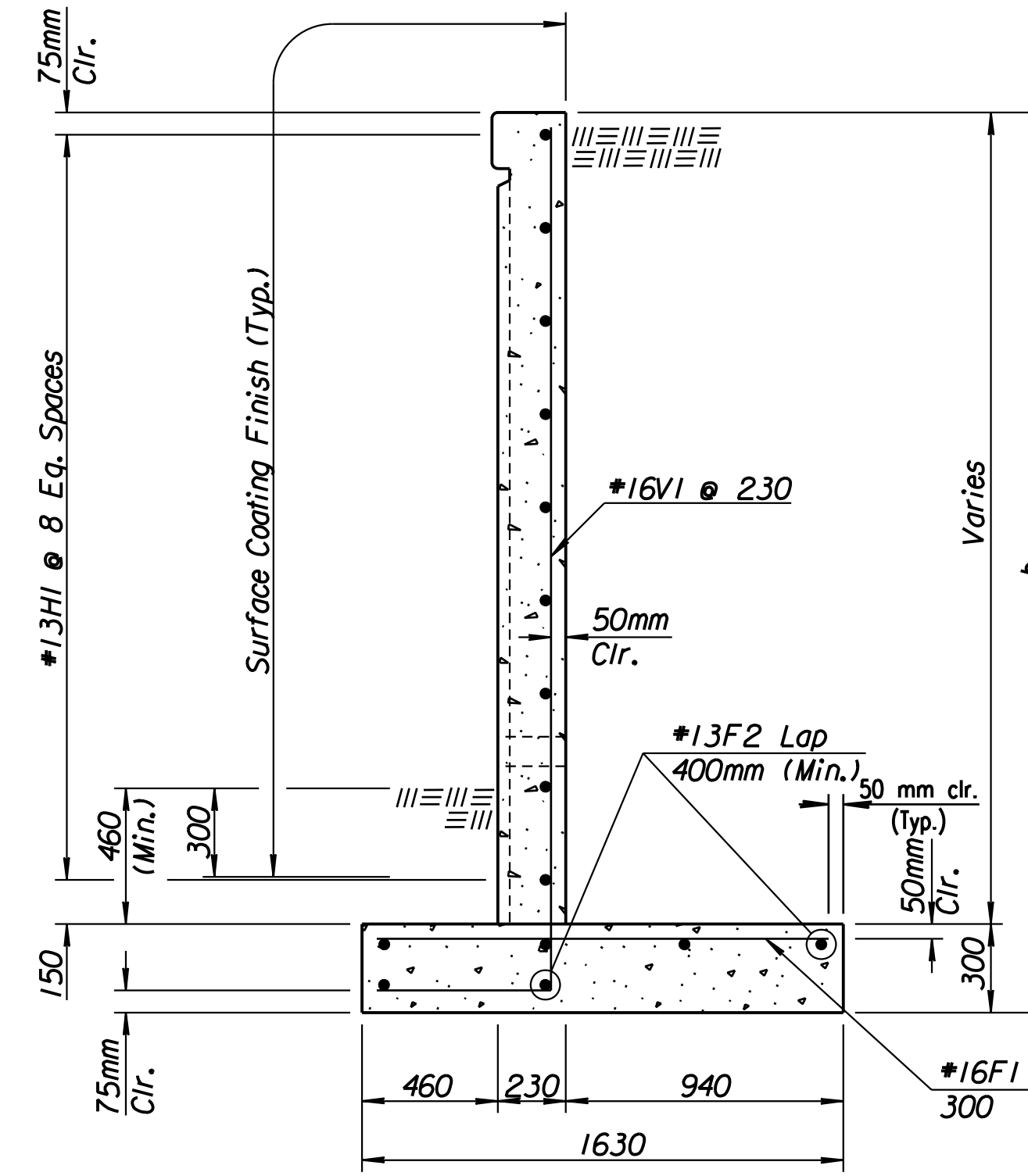
① WALL HEIGHT - 900 TO 1370
(Wall A)



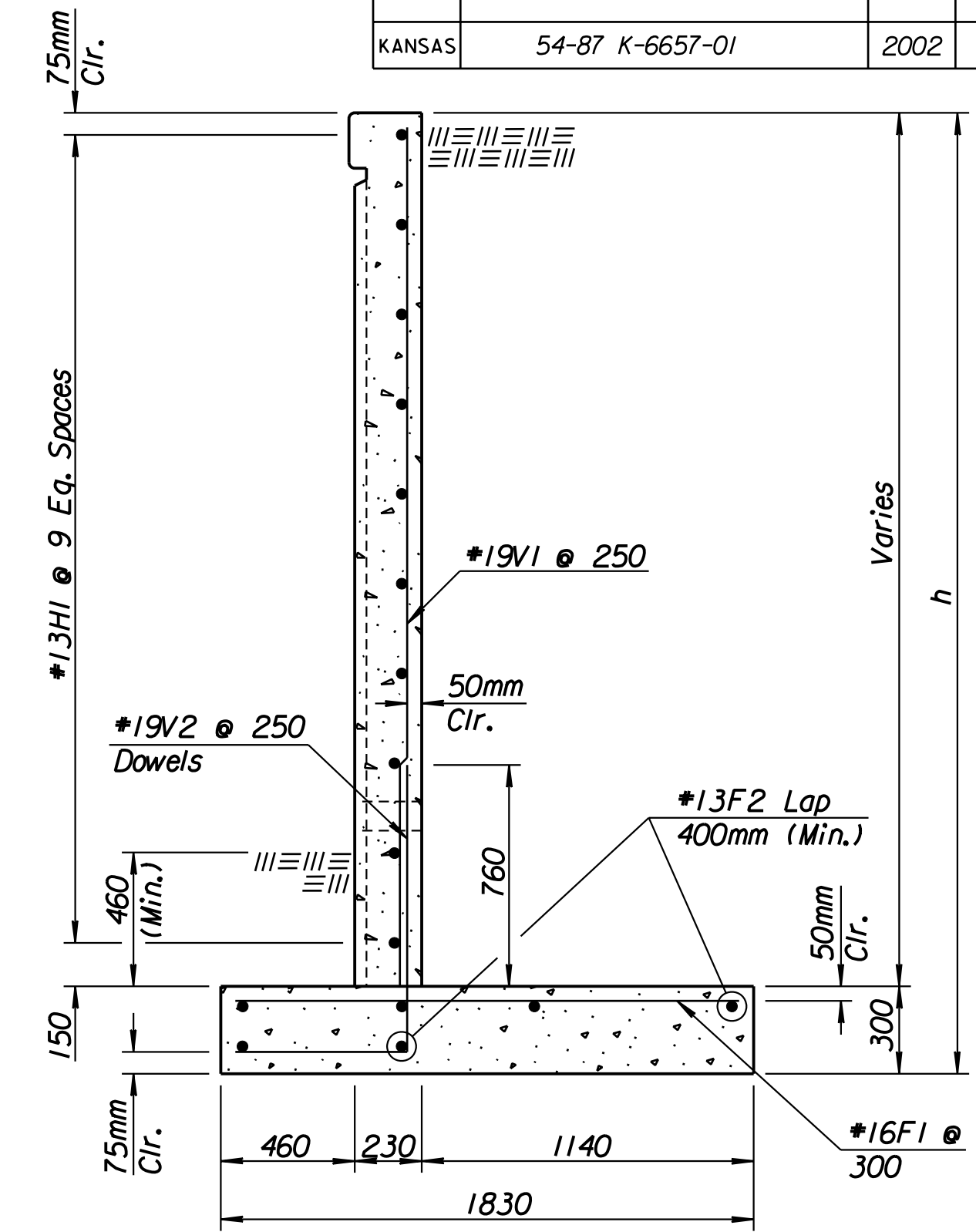
① WALL HEIGHT - 1370 TO 1830
(Wall B)



① WALL HEIGHT - 1830 TO 2290
(Wall C)



① WALL HEIGHT - 2290 TO 2740
(Wall D)



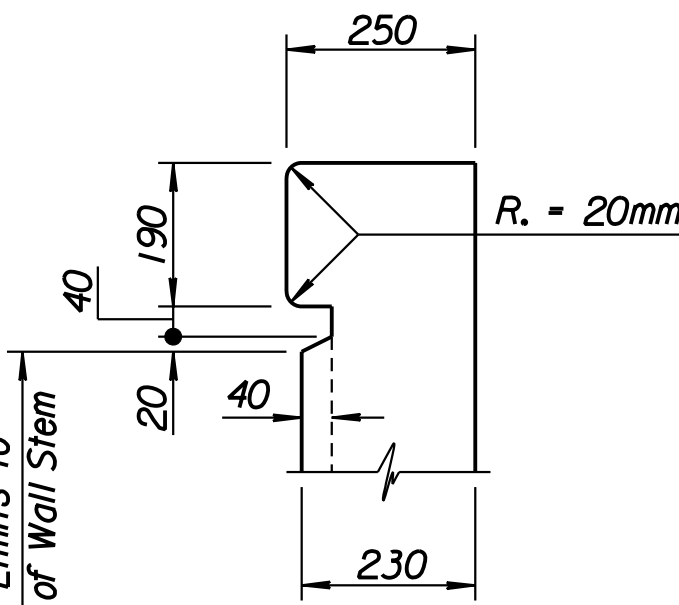
① WALL HEIGHT - 2740 TO 3100
(Wall E)

Note:
All Planter Wall ends terminating at the face of Retaining Wall shall be built according to the attached detail. Joint Sealant shall be Dymeric 511 as manufactured by Tremco or approved equal. Color shall match the color #20372 and will be installed in accordance with manufacturers recommended procedure. Material and application will be subsidiary to the bid item "Planter Walls".

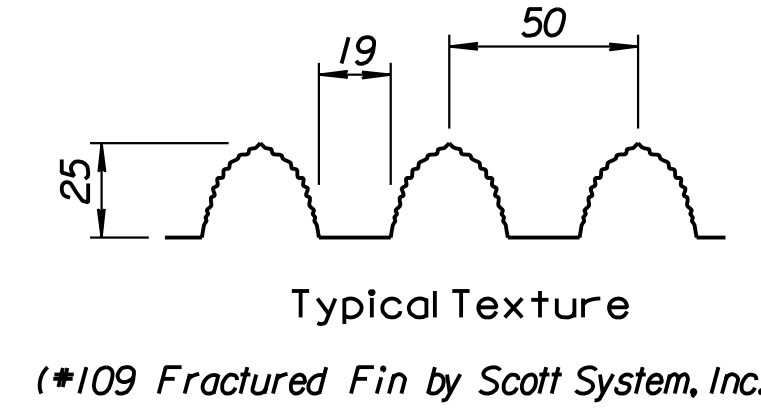
Revised
See RFI #063
(3-18-04)

Note:
All interior vertical surfaces of Planter Walls shall be coated with Enviroseal 20 as manufactured by Hydrozo or equivalent as approved by the Engineer. Application shall be in accordance with the manufacturers recommended procedure. Material and application will be subsidiary to the bid item "Planter Walls".

See Submittal
79.2.

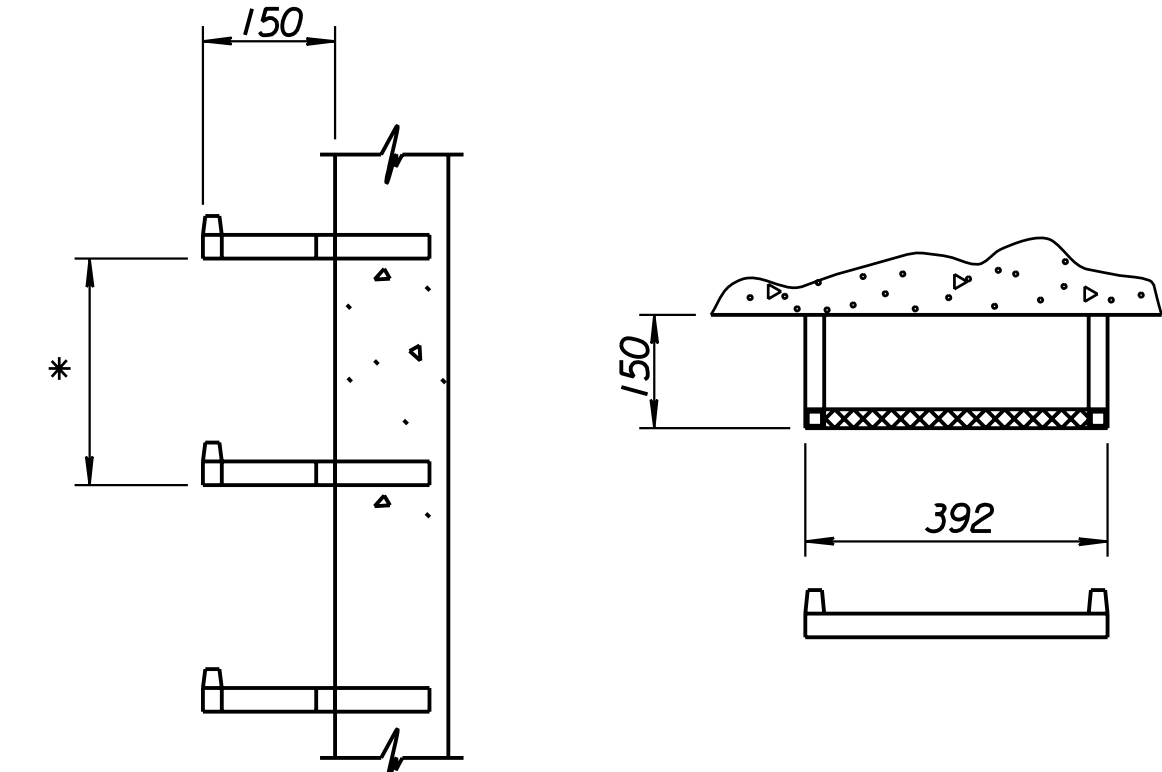


TYPICAL WALL TOP DETAIL



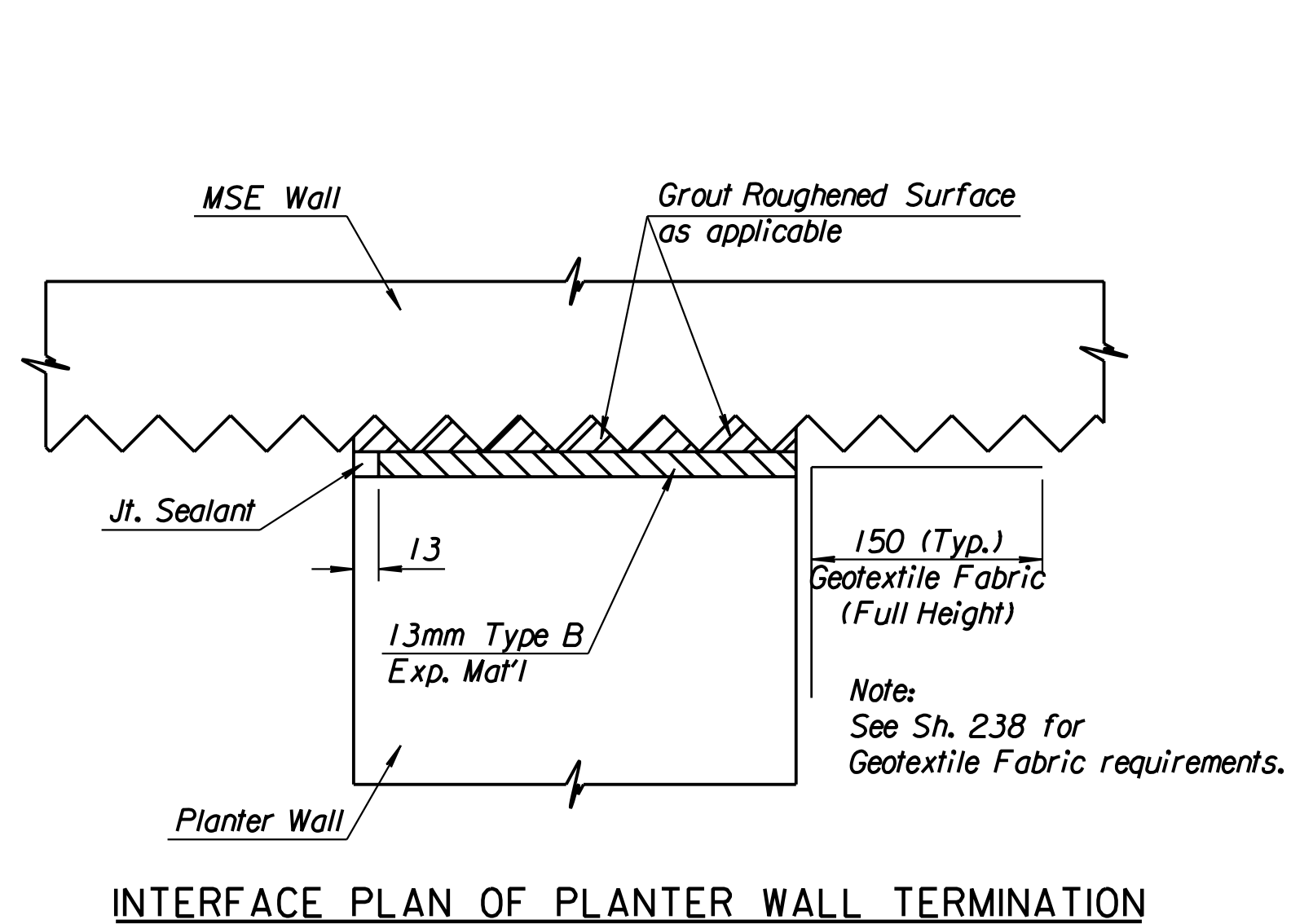
Typical Texture
(*109 Fractured Fin by Scott System, Inc.)

Note:
Surface Coating Finish will be Federal 595B Color #20372 (Backstint); Tamms Color #3686 (same color approved for MSE Walls). See General Note Sheet for Contraction and Expansion Joint Details. Contraction Joints will be spaced at 12 meter centers maximum with Expansion Joints spaced at 36 meters maximum.

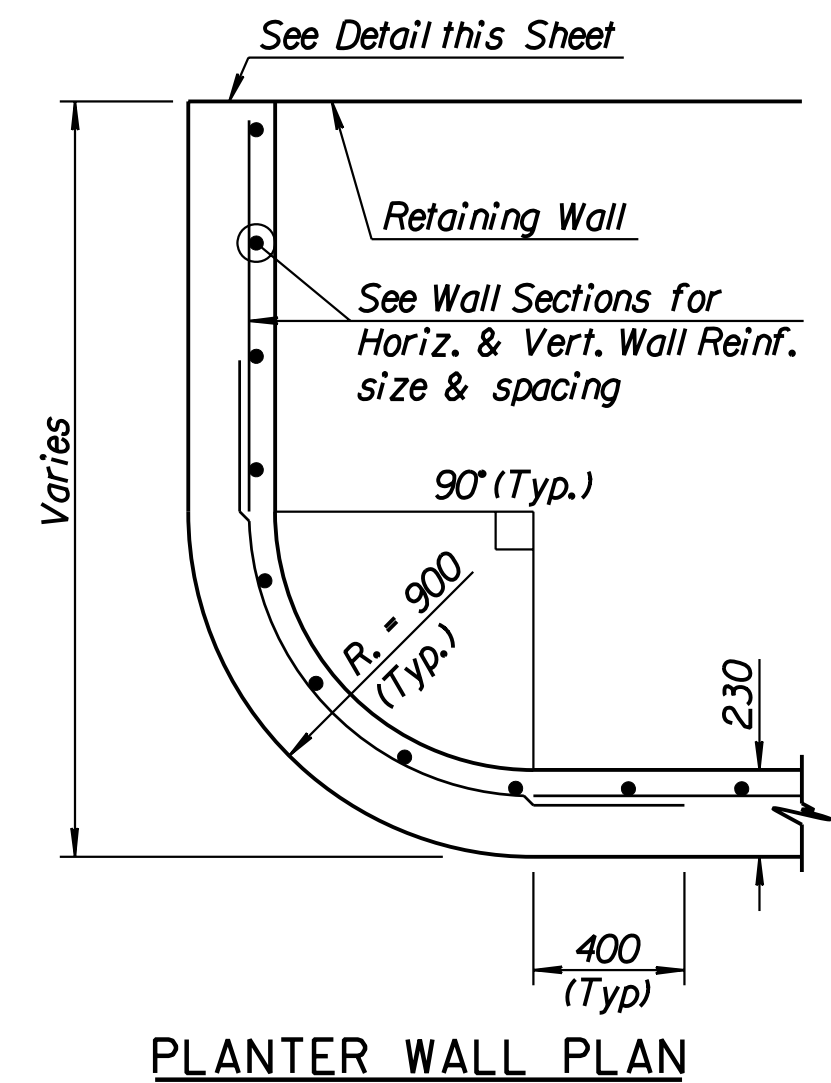


STEP DETAILS

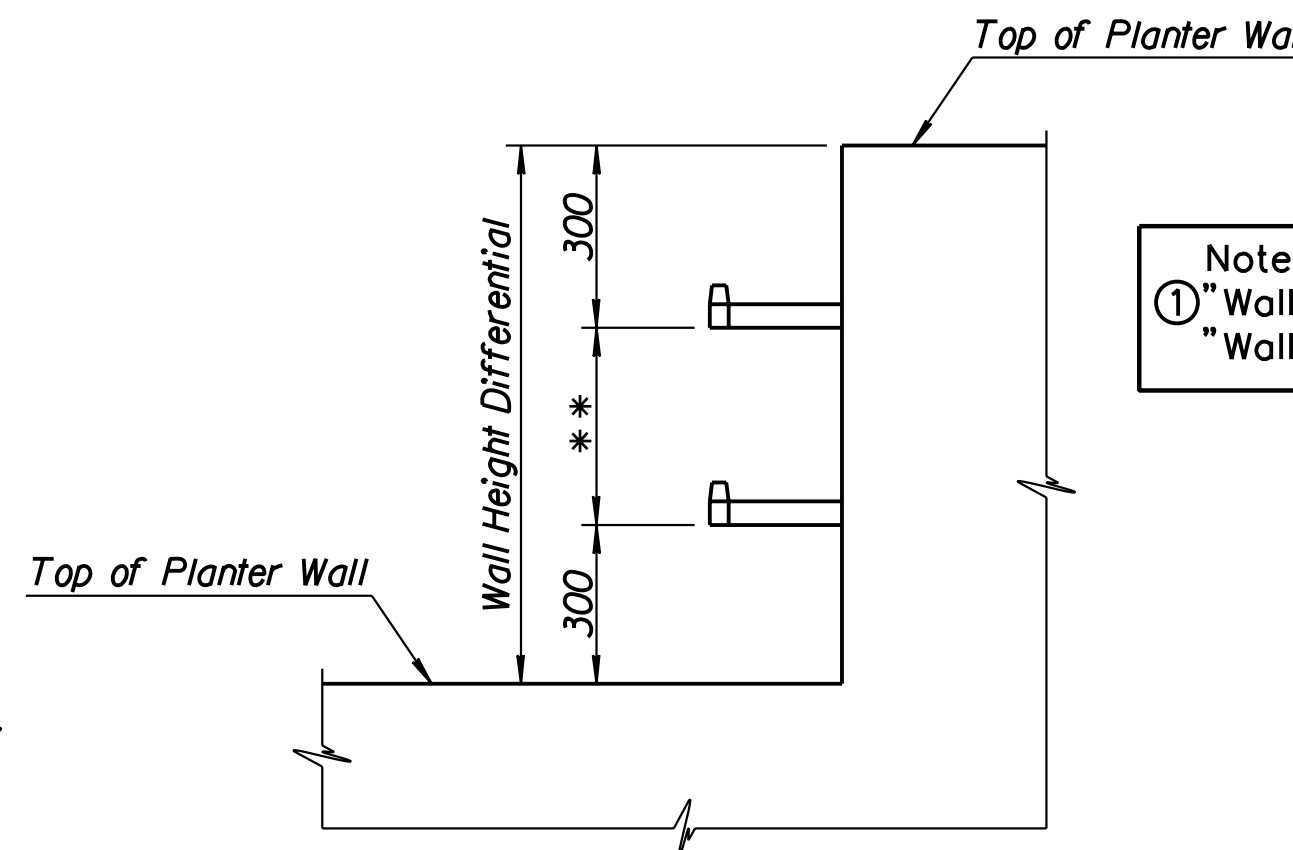
* Steps shall be uniformly spaced. Spacing shall be 300 mm (Min.) and 420 mm (Max.). Steps shall be PS2-PF Manhole Steps as manufactured by M.A. Industries Inc., Kelly & Dividend Dr. Peachtree City, Ga.



INTERFACE PLAN OF PLANTER WALL TERMINATION



PLANTER WALL PLAN



PARTIAL PLANTER WALL ELEVATION

** See Step Detail for Spacing

Note:
① "Wall Height" = h - 300 mm.
② "Wall Height" = Top of Wall to Top of Footing.

Note:
See Retaining Wall Plan Sheets 240 thru 250 for Wall type and "h" height callouts.
If the C.I.P. Retaining Walls are built then the Planter Wall Drains are to be spaced with the C.I.P. Drains and must be cross connected with 100 mm perforated pipe. This work will be considered subsidiary to the bid item "Planter Walls".

DSMR: PDF OPER: DRP SCALE: 1:20 i:/1997/97362/As-Built/dgn's/Vol 2/Sh 238a-plantwalldet.dgn Last Rev: 8-21-07 By: gdr

RECORD DRAWING

| | | | |
|--|-----|------------|-------------|
| CITY OF WICHITA | | | |
| KELLOGG | | | |
| PLANTER WALL DETAILS | | | |
| SEDGWICK COUNTY | | | |
| Professional Engineering Consultants, P.A. | | | |
| 303 S. TOPEKA • WICHITA, KANSAS 67202 | | | |
| 316-262-2691 • FAX 316-262-3003 | | | |
| Designed by | PDF | Checked by | RAS |
| Drawn by | DRP | Date | April, 2002 |
| | | Job No. | 97362 |