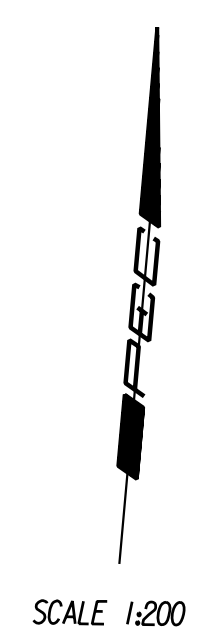
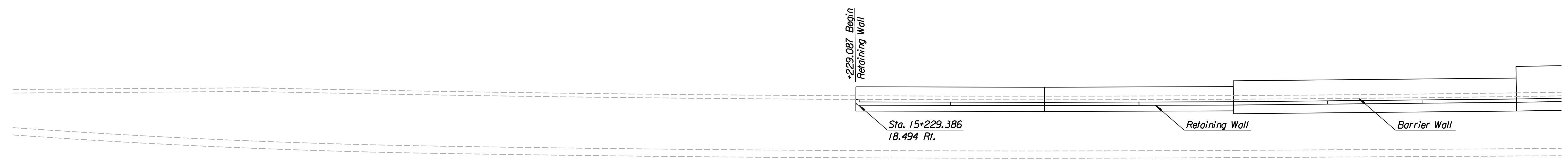


STATE	PROJECT NO.	YEAR	SHEET NO.	TOTAL SHEETS
KANSAS	54-87 K-6657-01	2002	240	1122




⊕ Proposed Improvements (Kellogg)      +200      +300



PLAN

NOTE:  
Mechanically Stabilized Earth (MSE) Walls were constructed in lieu of Cast-in-Place Retaining Walls. See Submittal No.'s 21.1, 21.1.A, 21.2.A, 21.2.B, 21.2.C, 21.3.A, 34.1.A, 34.1.B, 34.2.A, 34.3.A and 34.3. Also see Special Provision 90M-110-R3.

DSNR: PDF OPER: DRP SCALE: 1:200  
 i:/1997/97362/As-Builts/dgn's/Vol 2/Sh 240-plantwall1.dgn Last Rev: 8-21-07 By: gdr

1					
No.	Revisions	By	Date		
CITY OF WICHITA <b>KELLOGG</b> CAST IN PLACE RETAINING WALL STA. 15+142 to STA. 15+300 SEDGWICK COUNTY					
 <b>Professional Engineering Consultants, P.A.</b> <small>303 S. TOPEKA • WICHITA, KANSAS 67202          316-262-2691 • FAX 316-262-3003</small>					
Designed by	PDF	Checked by	RAS		
Drawn by	DRP	Date	April, 2002	Job No.	97362

**RECORD DRAWING**