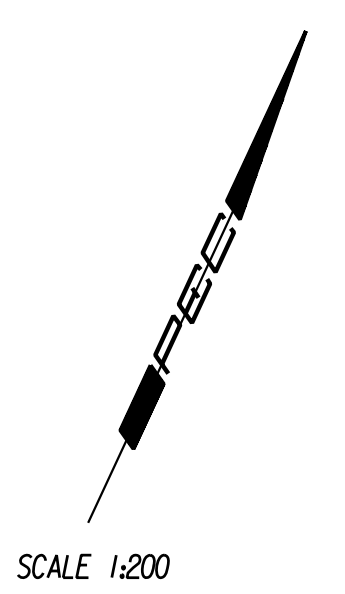
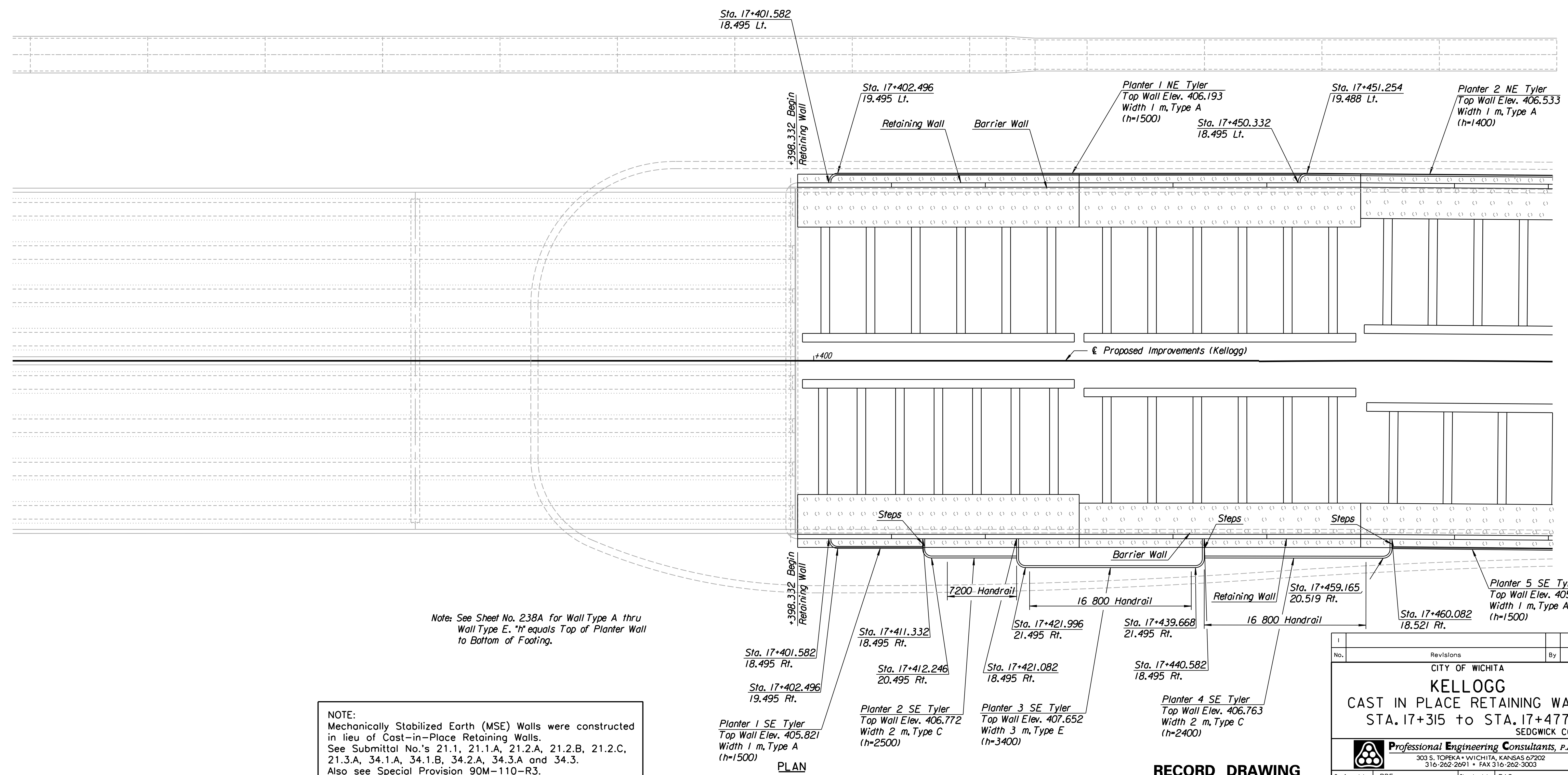


|        |                 |      |           |              |
|--------|-----------------|------|-----------|--------------|
| STATE  | PROJECT NO.     | YEAR | SHEET NO. | TOTAL SHEETS |
| KANSAS | 54-87 K-6657-01 | 2002 | 248       | 1122         |



|                    |  |
|--------------------|--|
| DATE               |  |
| BY                 |  |
| REFERENCES NOTED   |  |
| REFERENCES CHECKED |  |

DSNR: PDF OPER: DRP SCALE: 1:200  
 i:/1997/97362/As-Builts/dgn's/Vol 2/Sh 248-plantwall9.dgn Last Rev: 8-22-07 By: gdr



Note: See Sheet No. 238A for Wall Type A thru Wall Type E. "h" equals Top of Planter Wall to Bottom of Footing.

NOTE:  
 Mechanically Stabilized Earth (MSE) Walls were constructed in lieu of Cast-in-Place Retaining Walls.  
 See Submittal No.'s 21.1, 21.1.A, 21.2.A, 21.2.B, 21.2.C, 21.3.A, 34.1.A, 34.1.B, 34.2.A, 34.3.A and 34.3.  
 Also see Special Provision 90M-110-R3.

PLAN

RECORD DRAWING

|  |     |            |             |
|--|-----|------------|-------------|
| CITY OF WICHITA  |     |            |             |
| <b>KELLOGG</b>   |     |            |             |
| CAST IN PLACE RETAINING WALL   |     |            |             |
| STA. 17+315 to STA. 17+477   |     |            |             |
| SEDGWICK COUNTY  |     |            |             |
| <b>Professional Engineering Consultants, P.A.</b>  |     |            |             |
| <small>303 S. TOPEKA • WICHITA, KANSAS 67202<br/>316-262-2691 • FAX 316-262-3003</small> |     |            |             |
| Designed by  | PDF | Checked by | RAS         |
| Drawn by   | DRP | Date       | April, 2002 |
|  |     | Job No.    | 97362       |