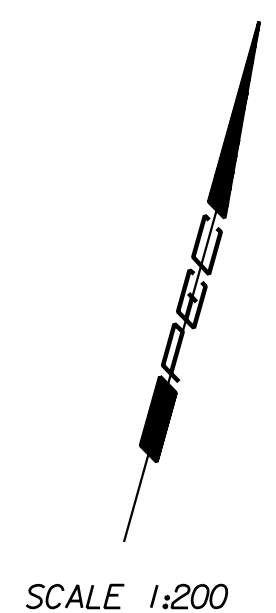
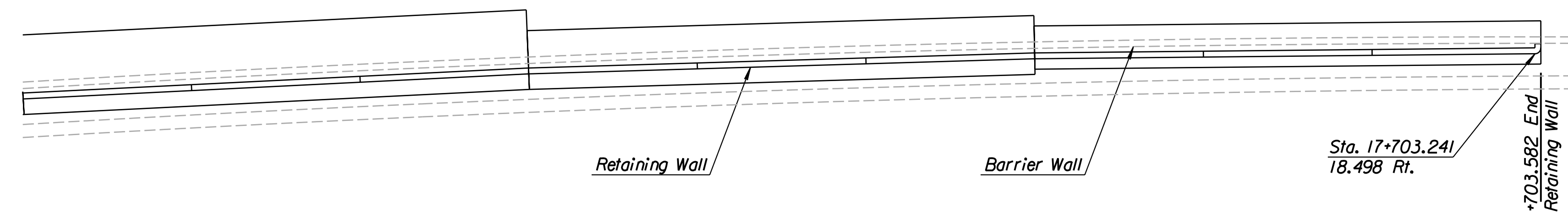
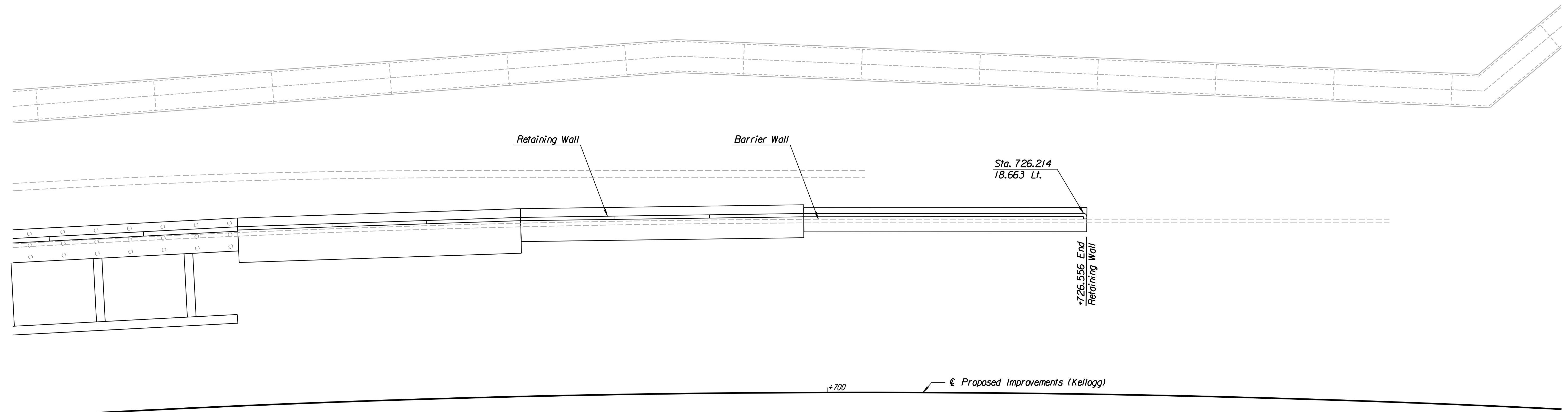


| | | | | |
|--------|-----------------|------|-----------|--------------|
| STATE | PROJECT NO. | YEAR | SHEET NO. | TOTAL SHEETS |
| KANSAS | 54-87 K-6657-01 | 2002 | 250 | 1122 |



| | |
|--------------------|--|
| DATE | |
| REFERENCES NOTED | |
| REFERENCES CHECKED | |



PLAN

NOTE:
Mechanically Stabilized Earth (MSE) Walls were constructed in lieu of Cast-in-Place Retaining Walls.
See Submittal No.'s 21.1, 21.1.A, 21.2.A, 21.2.B, 21.2.C, 21.3.A, 34.1.A, 34.1.B, 34.2.A, 34.3.A and 34.3.
Also see Special Provision 90M-110-R3.

RECORD DRAWING

DSNR: PDF OPER: DRP SCALE: 1:200
 i:/1997/97362/As-Builts/dgn's/Vol 2/Sh 250-plantwall11.dgn Last Rev: 8-22-07 By: gdr

| | | | |
|--------------------------------------------------------------------------------------------------------------------------------------------------------|-----------|------------|-------------|
| 1 | | | |
| No. | Revisions | By | Date |
| CITY OF WICHITA KELLOGG CAST IN PLACE RETAINING WALL STA. 17+632 to STA. 17+775 SEDGWICK COUNTY | | | |
| Professional Engineering Consultants, P.A. <small>303 S. TOPEKA • WICHITA, KANSAS 67202 316-262-2691 • FAX 316-262-3003</small> | | | |
| Designed by | PDF | Checked by | RAS |
| Drawn by | DRP | Date | April, 2002 |
| | | Job No. | 97362 |