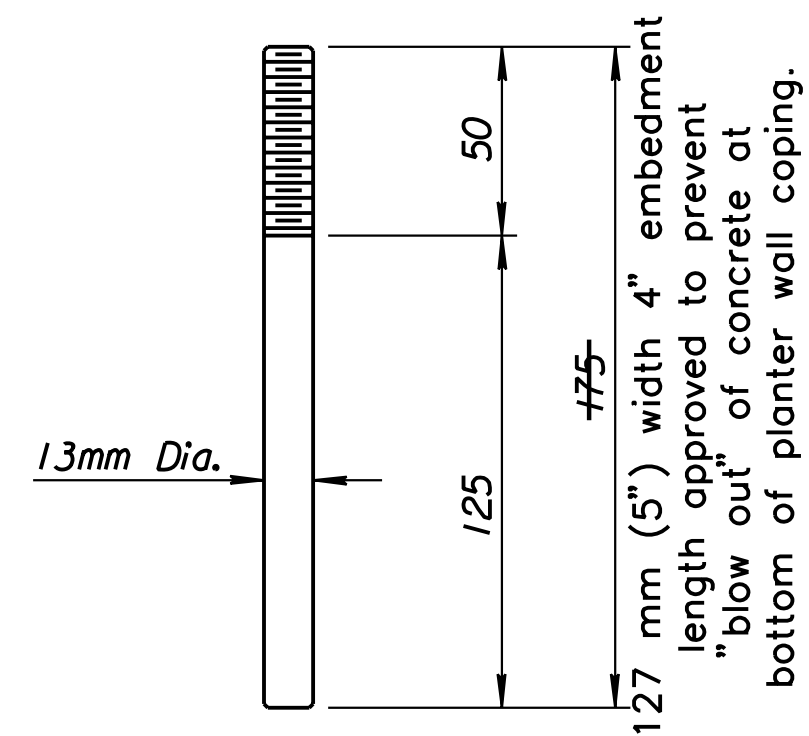
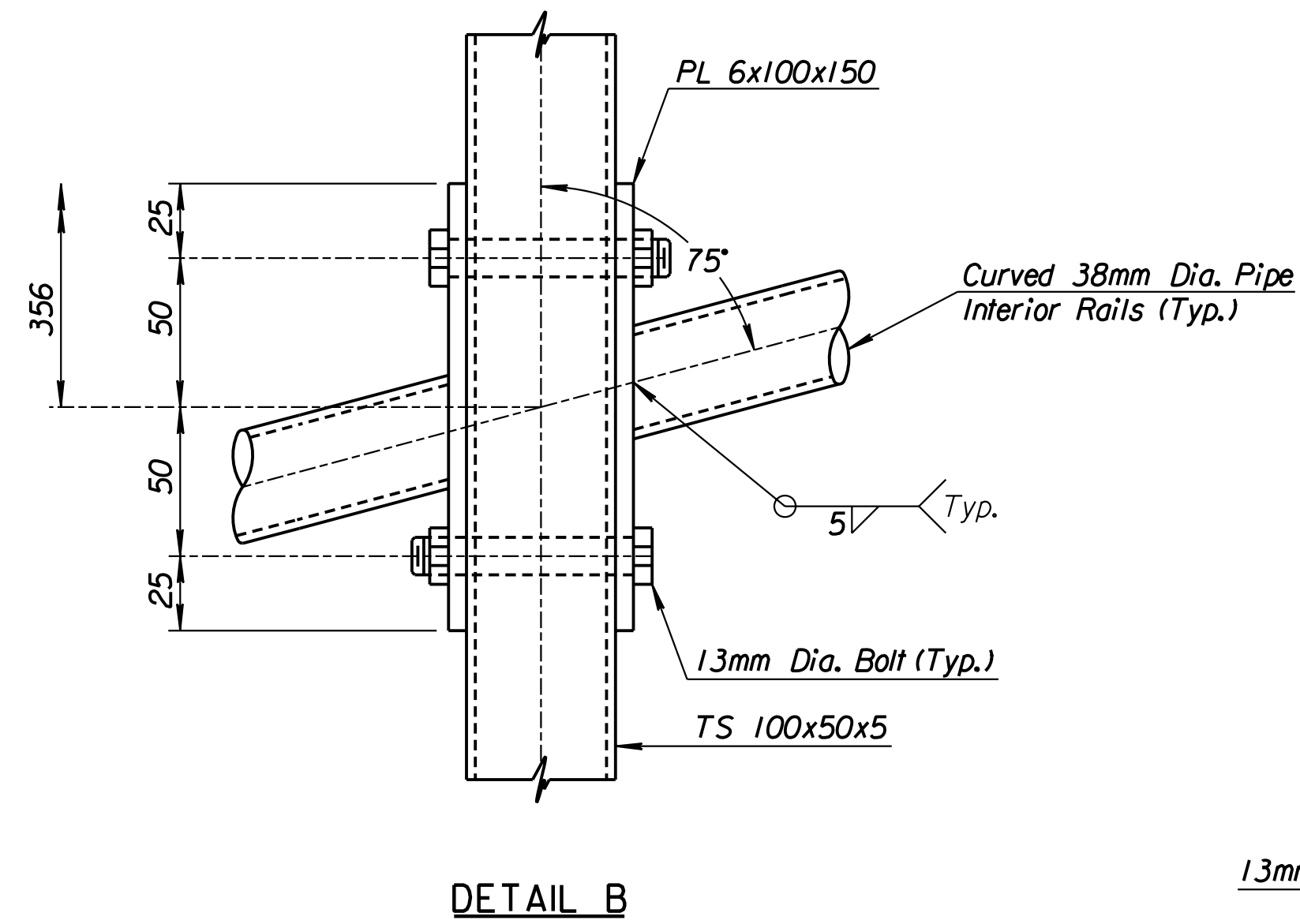
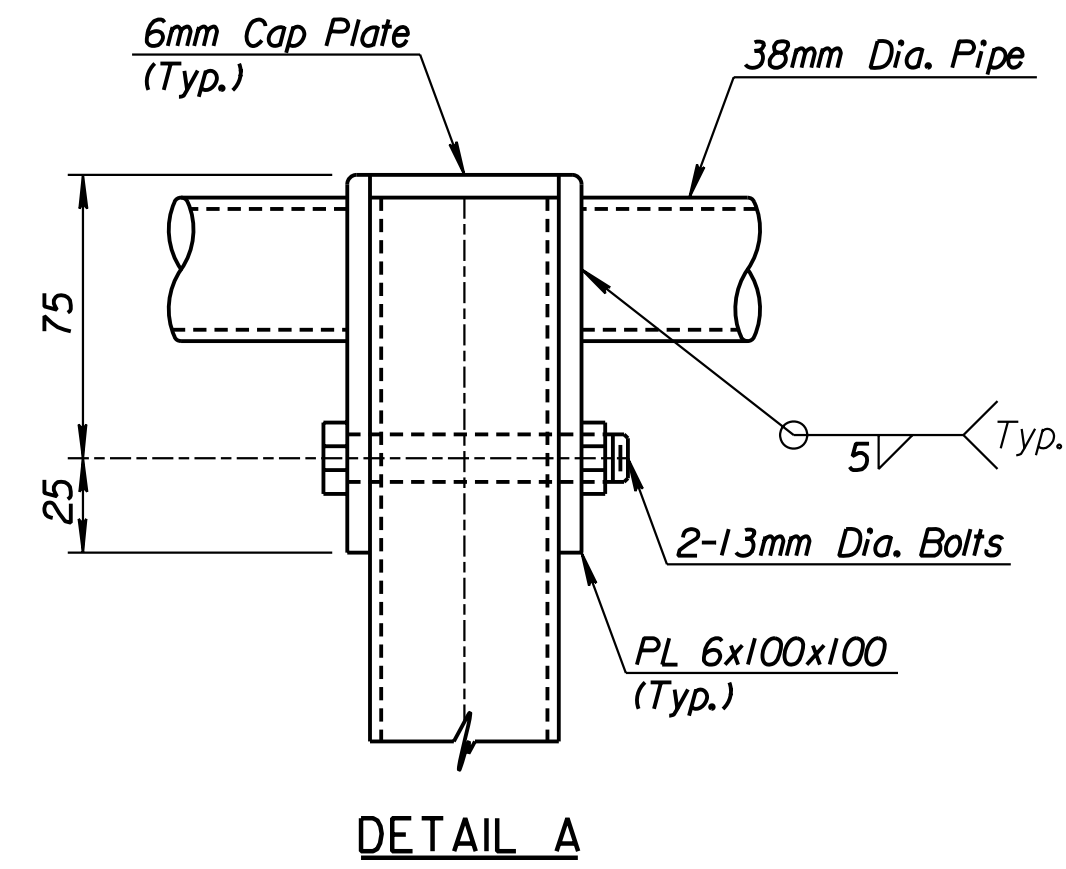
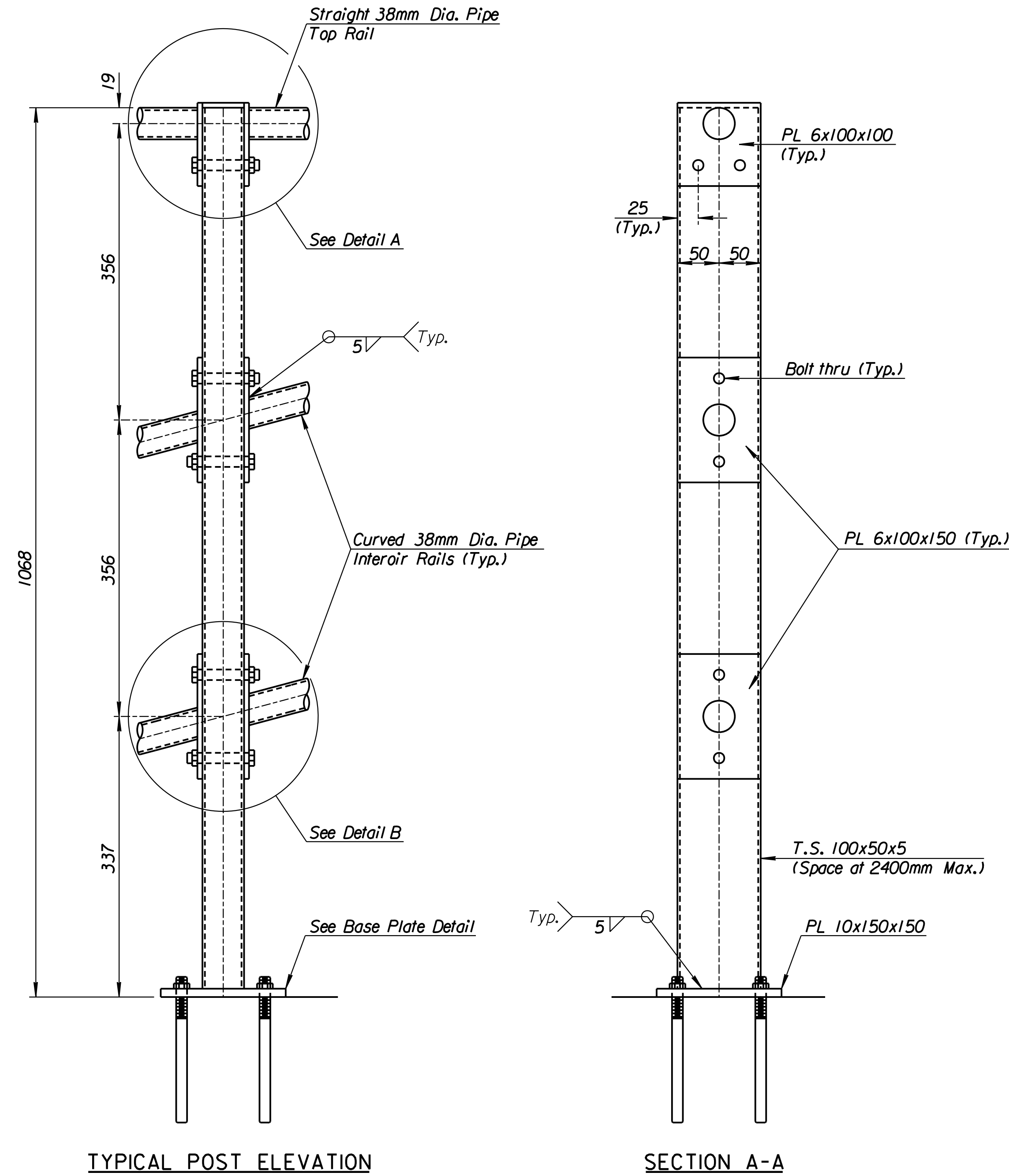


STATE	PROJECT NO.	YEAR	SHEET NO.	TOTAL SHEETS
KANSAS	54-87 K-6657-01	2002	251	1122

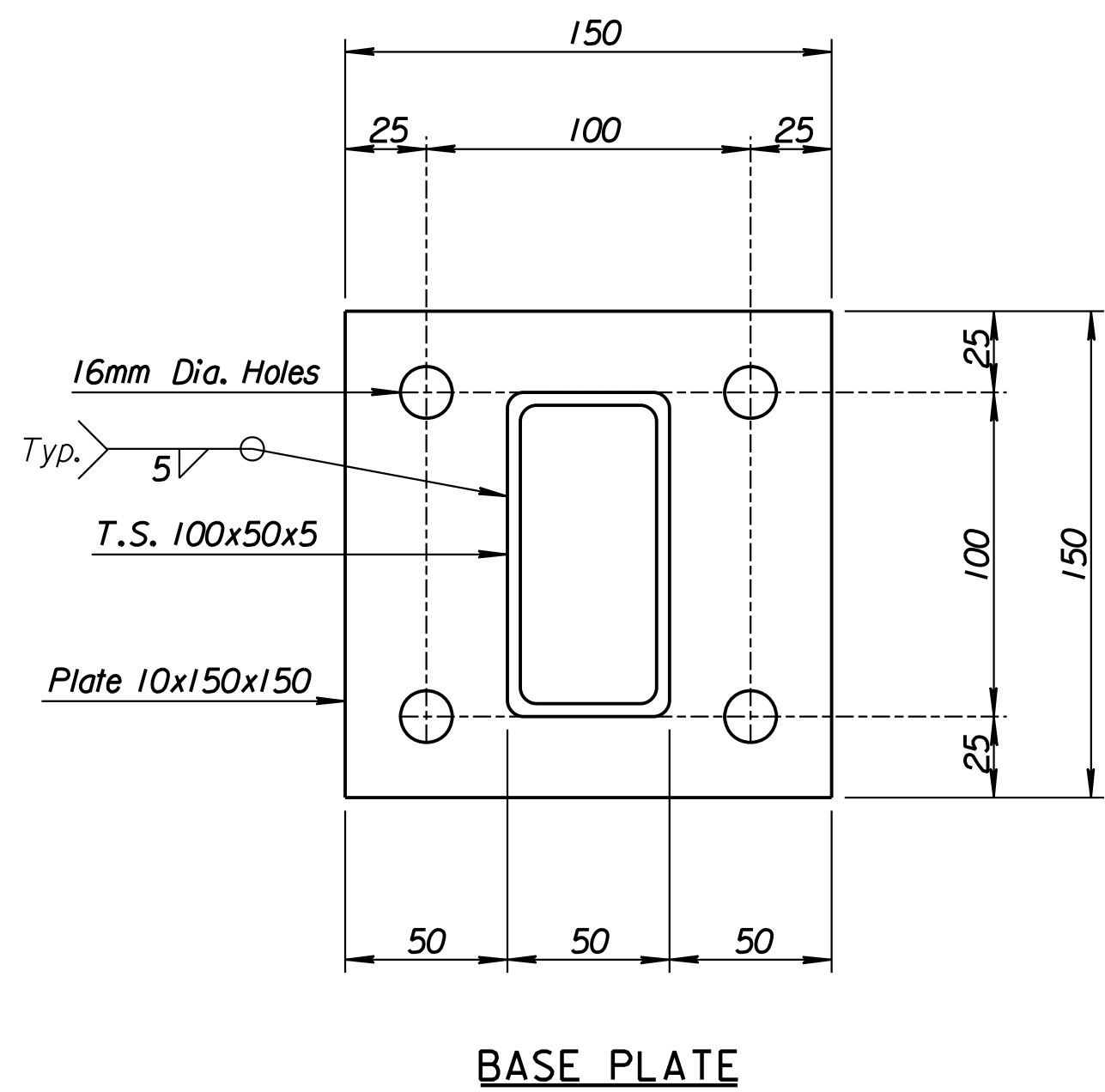


ANCHOR BOLT
Galvanized (ASTM A153)
(May substitute expandable Anchor Bolts when approved by the Engineer)
Hilti "drop anchors" approved.

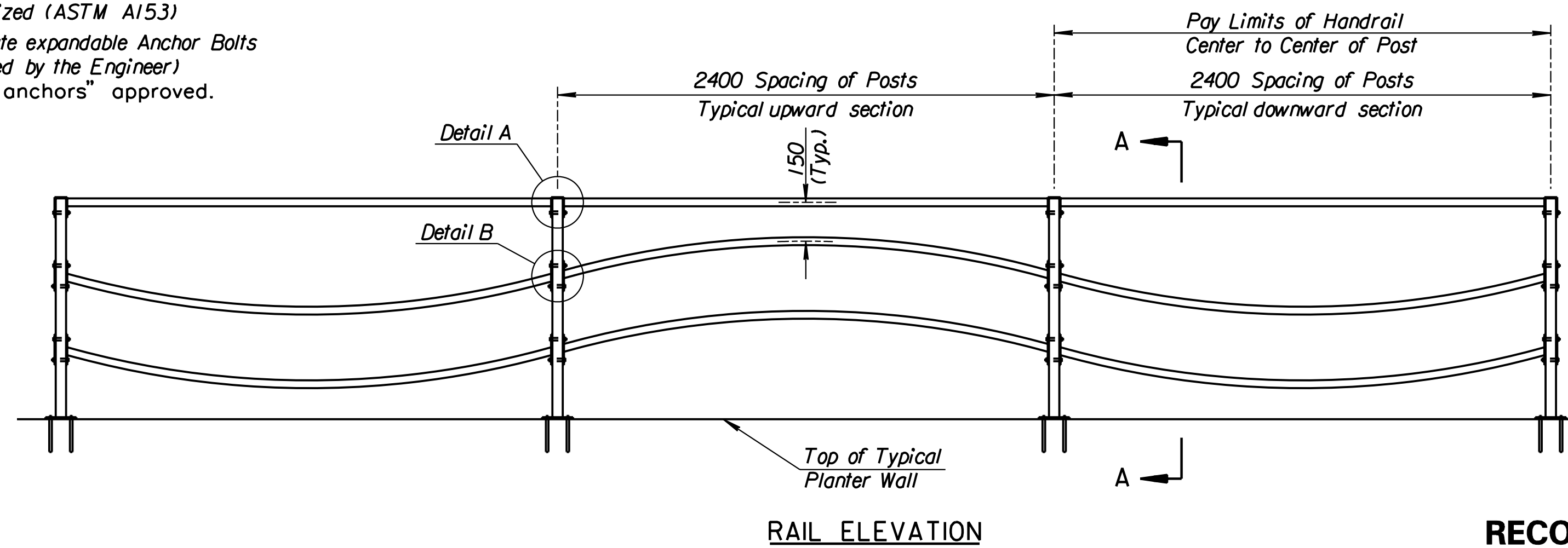


TYPICAL POST ELEVATION

SECTION A-A



BASE PLATE



RAIL ELEVATION

RECORD DRAWING

GENERAL NOTES

The horizontal members of the rail shall be 38mm dia. standard weight pipe. Vertical members of the rail shall be hollow structural tubing. All structural steel and tubing shall comply to A.S.T.M. designation A709M or A500 Grade B respectively.

Rail shall be fabricated in lengths as shown.

Posts and bars shall be set vertical.

See Special Provisions for painting of Handrail.

Material and construction shall conform to the structural welding code A.W.S. D1.1-00.

Shop details must be submitted and approved by the Engineer.

Note:
See Submittal #76.A for Approved Shop Drawings.

DSMR: RWA OPER: DRP SCALE: 1:20 i:/1997/97362/As-Builts/dgn's/Vol 2/Sh 251-rail.dgn Last Rev: 8-22-07 By: gdr

Revisions				By	Date
No.					
CITY OF WICHITA					
PLANTER WALL RAIL					
SEDGWICK COUNTY					
Professional Engineering Consultants, P.A. 303 S. TOPEKA • WICHITA, KANSAS 67202 316-262-2691 • FAX 316-262-3003					
Designed by	RWA	Checked by	RAS		
Drawn by	DRP	Date	April, 2002	Job No.	97362