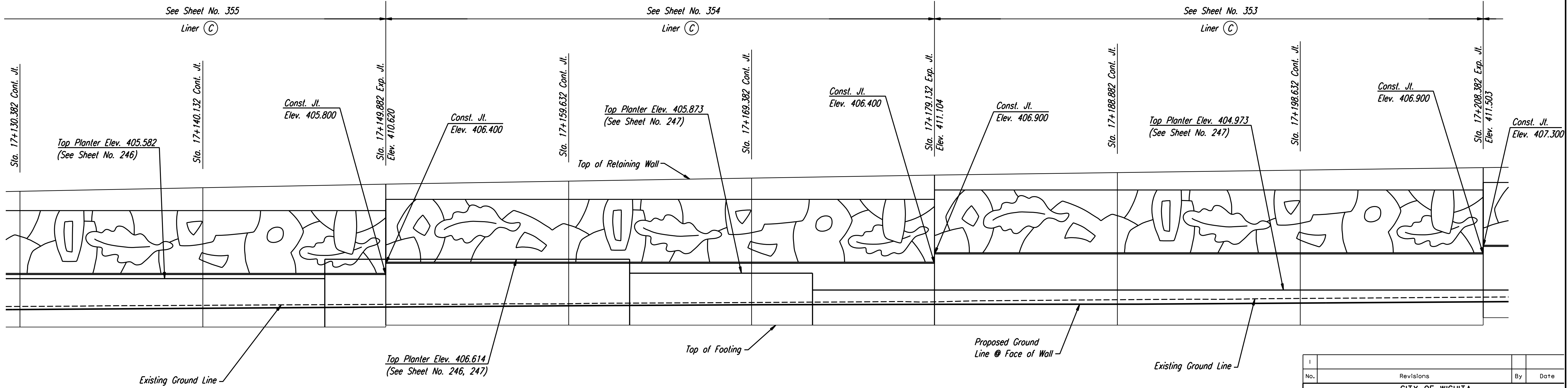
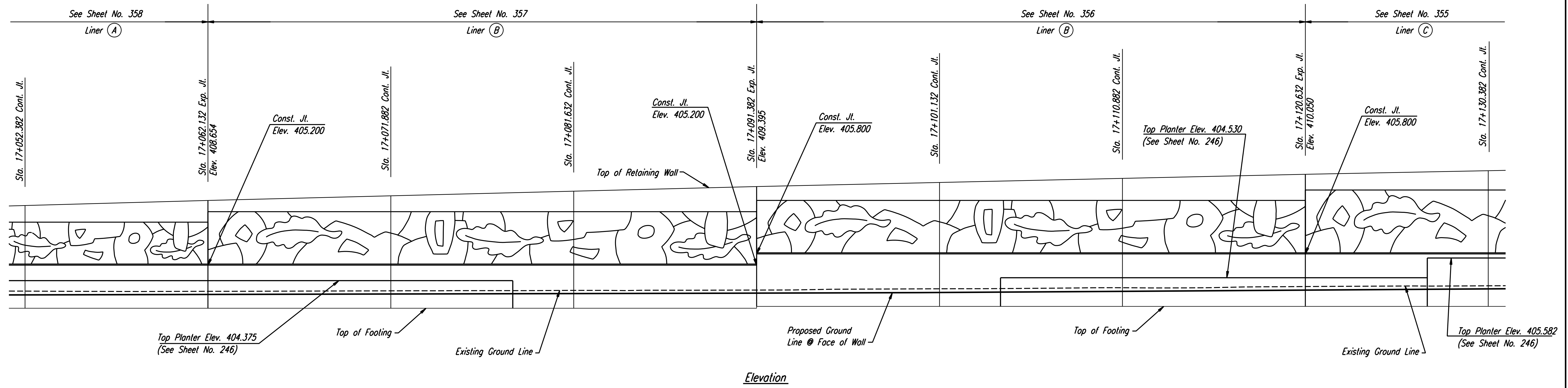


STATE	PROJECT NO.	YEAR	SHEET NO.	TOTAL SHEETS
KANSAS	54-87 K-6657-01	2002	262	1122

DATE	
BY	
REFERENCES NOTED	
REFERENCES CHECKED	



Elevation

Elevation

NOTE:
Mechanically Stabilized Earth (MSE) Walls were constructed in lieu of Cast-in-Place Retaining Walls. See Submittal No.'s 21.1, 21.1.A, 21.2.A, 21.2.B, 21.2.C, 21.3.A, 34.1.A, 34.1.B, 34.2.A, 34.3.A and 34.3. Also see Special Provision 90M-110-R3.

RECORD DRAWING

DSMR: DWH OPER: JGP SCALE: 1:100 i:/1997/97362/As-Builts/dgn's/Vol 2/Sh 262-TylerNE.dgn Last Rev: 8-22-07 By: gdr

Revisions			
No.	By	Date	
CITY OF WICHITA			
KELLOGG			
CAST-IN-PLACE RETAINING WALLS			
TYLER SW ELEVATION			
SEDGWICK COUNTY			
Professional Engineering Consultants, P.A.			
303 S. TOPEKA • WICHITA, KANSAS 67202			
316-262-2691 • FAX 316-262-3003			
Designed by	PDF	Checked by	RAS
Drawn by	JSB	Date	April, 2002
		Job No.	97362