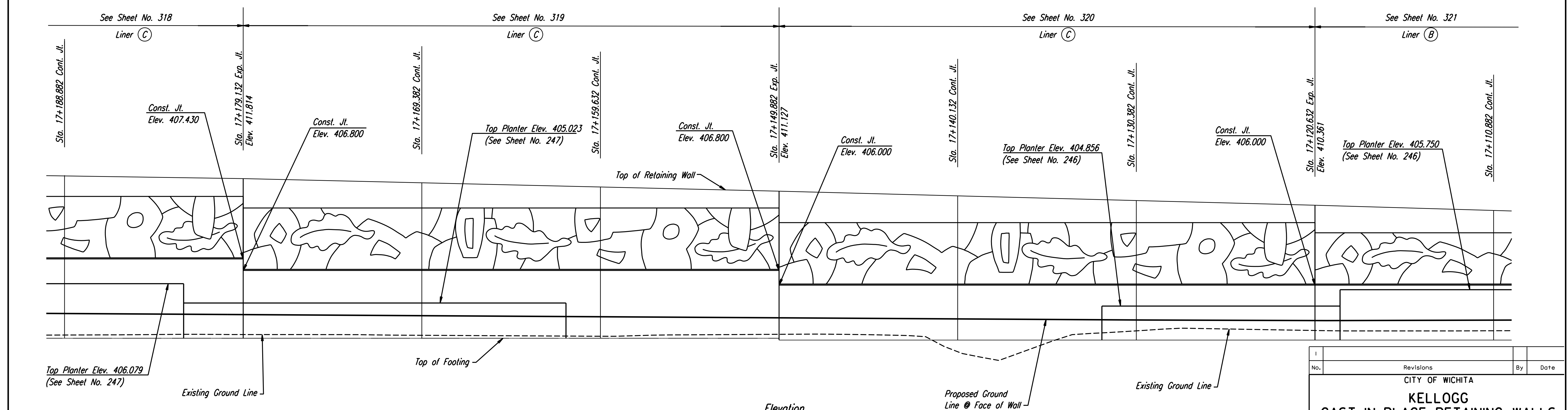
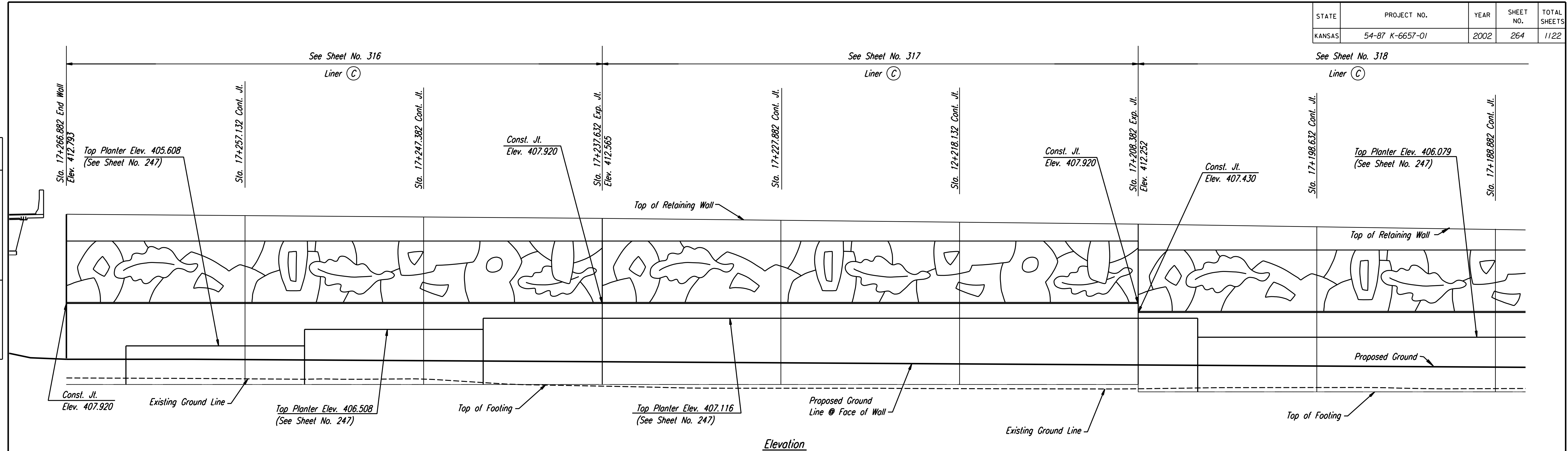


|        |                 |      |           |              |
|--------|-----------------|------|-----------|--------------|
| STATE  | PROJECT NO.     | YEAR | SHEET NO. | TOTAL SHEETS |
| KANSAS | 54-87 K-6657-01 | 2002 | 264       | 1122         |

|                    |  |
|--------------------|--|
| DATE               |  |
| BY                 |  |
| REFERENCES NOTED   |  |
| REFERENCES CHECKED |  |



NOTE:  
 Mechanically Stabilized Earth (MSE) Walls were constructed in lieu of Cast-in-Place Retaining Walls.  
 See Submittal No.'s 21.1, 21.1.A, 21.2.A, 21.2.B, 21.2.C, 21.3.A, 34.1.A, 34.1.B, 34.2.A, 34.3.A and 34.3.  
 Also see Special Provision 90M-110-R3.

**RECORD DRAWING**

|     |           |    |      |
|-----|-----------|----|------|
| No. | Revisions | By | Date |
|     |           |    |      |

CITY OF WICHITA  
**KELLOGG**  
 CAST-IN-PLACE RETAINING WALLS  
 TYLER NW ELEVATION  
 SEDGWICK COUNTY

**Professional Engineering Consultants, P.A.**  
 303 S. TOPEKA • WICHITA, KANSAS 67202  
 316-262-2691 • FAX 316-262-3003

|             |     |            |             |
|-------------|-----|------------|-------------|
| Designed by | PDF | Checked by | RAS         |
| Drawn by    | JSB | Date       | April, 2002 |
|             |     | Job No.    | 97362       |

DSNR: DWH OPER: JCP SCALE: 1:100  
 i:/1997/97362/As-Builts/dgn's/Vol 2/Sh 264-TylerNE.dgn Last Rev: 8-22-07 By: gdr