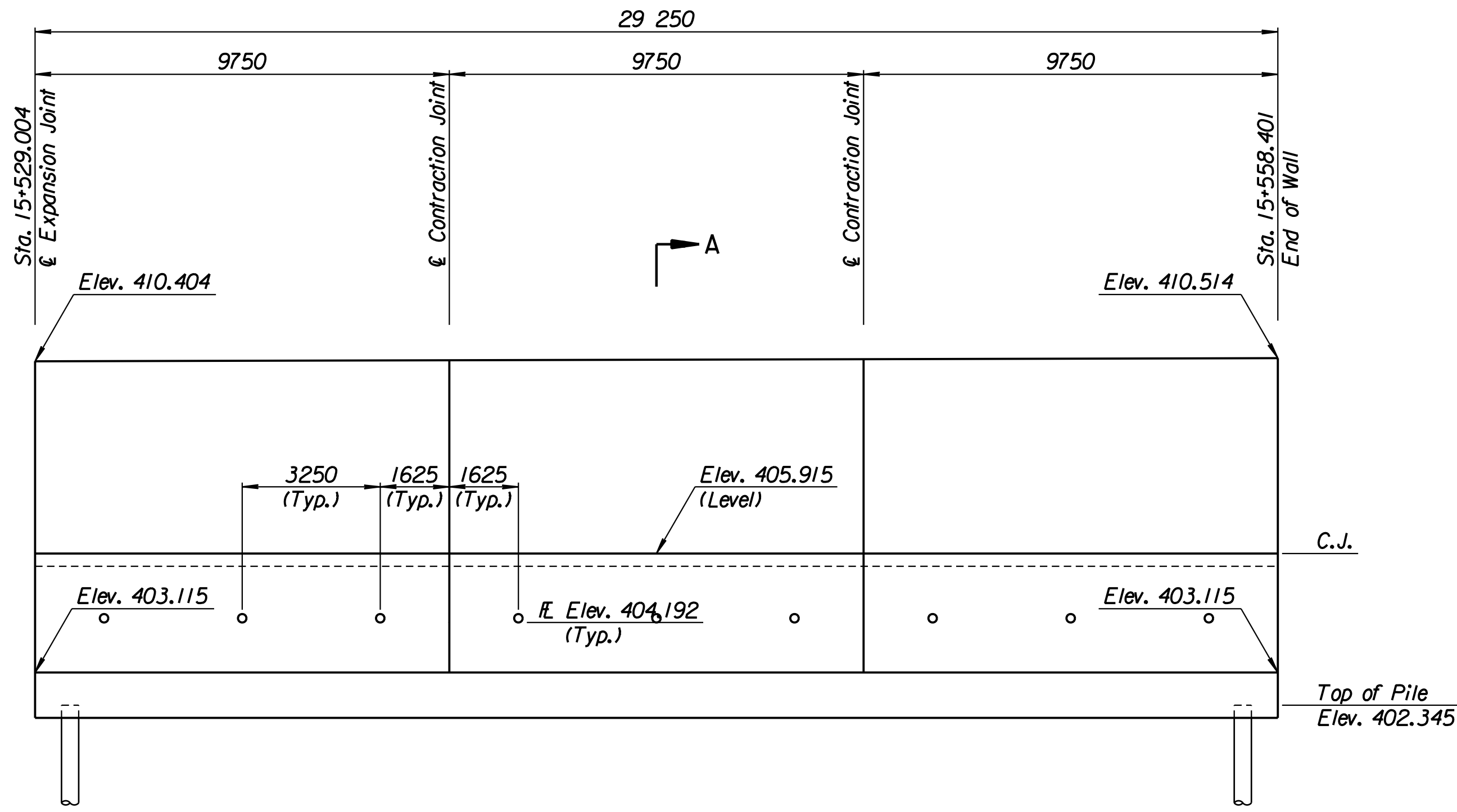


STATE	PROJECT NO.	YEAR	SHEET NO.	TOTAL SHEETS
KANSAS	54-87 K-6657-01	2002	271	1122

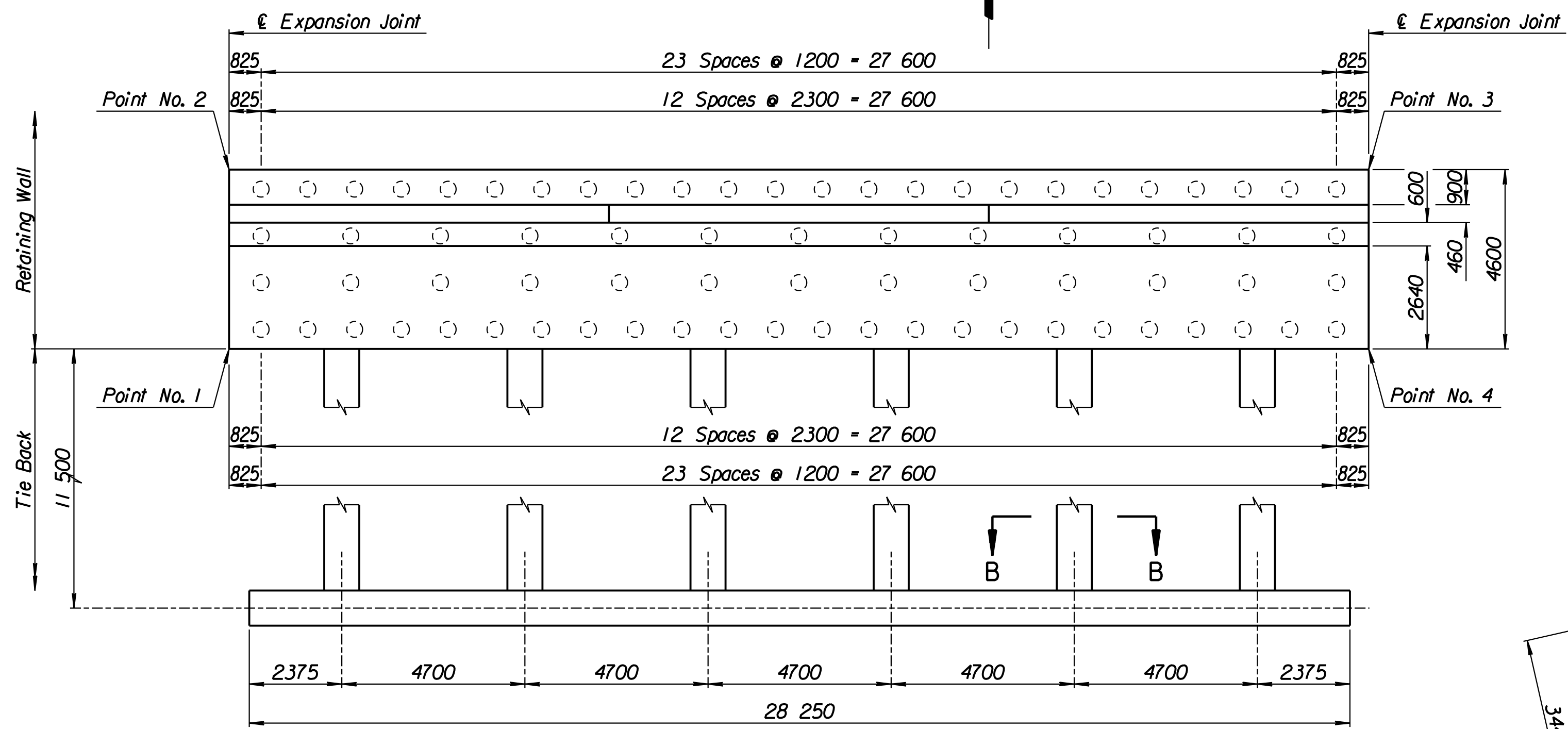
LAYOUT INFORMATION				
Point No.	North Coordinate	East Coordinate	Station	Offset
1	511386.095	491528.613	15+529.004	14.795 Lt.
2	511390.633	491527.857	15+529.004	19.395 Lt.
3	511395.552	491556.683	15+558.401	19.395 Lt.
4	511391.020	491557.475	15+558.401	14.795 Lt.

REINFORCING STEEL							
Straight Bars				Bent Bars			
Mark	Size	Number	Length	Mark	Size	Number	Length
AI-1	*25	342	4520	AI-3	*29	195	3940
AI-2	*25	60	15 540	AI-4	*19	195	2620
AI-6	*29	195	4760	AI-5	*29	195	2500
AI-7	*13	99	3520	AI-9	*19	99	1350
AI-8	*16	147	9650				
AI-10	*19	99	4340				
AI-11	*13	99	4440				
AI-12	*29	72	4000				

WALL QUANTITIES		
Item	Quantity	Unit
Pressure Grouted Pile (406 mm)	888.0	m
Concrete (Grade 30)(AE)	264.4	m <sup>3</sup>
Reinforcing Steel (Grade 420)	27 740	kg
Class III Excavation	294.0	m <sup>3</sup>



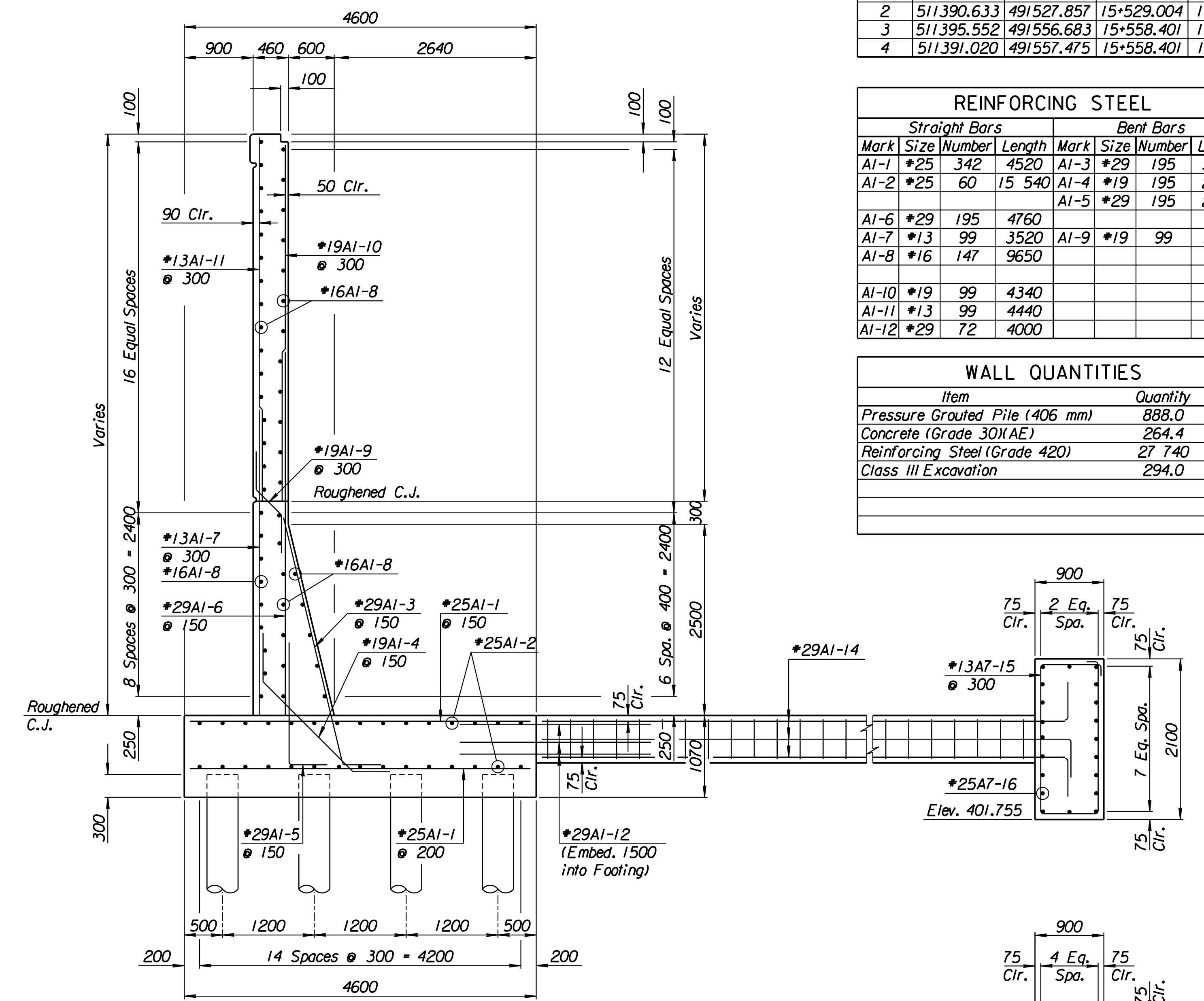
ELEVATION



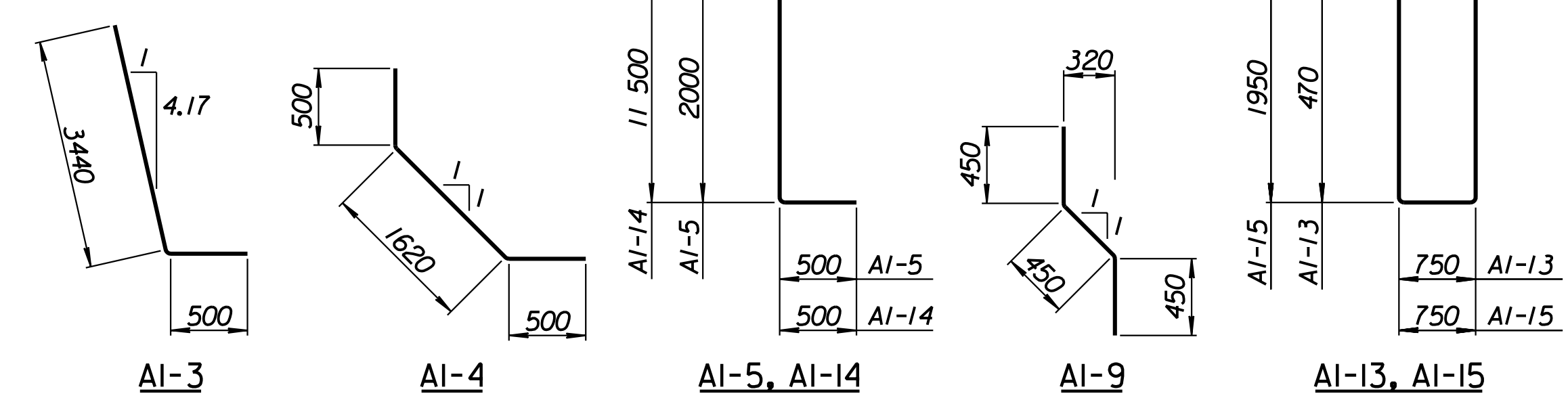
PLAN

TIE BACK REINFORCING STEEL							
Straight Bars				Bent Bars			
Mark	Size	Number	Length	Mark	Size	Number	Length
AI-16	*25	36	15 040	AI-13	*13	222	2740
				AI-14	*29	72	12 000
				AI-15	*13	94	5700

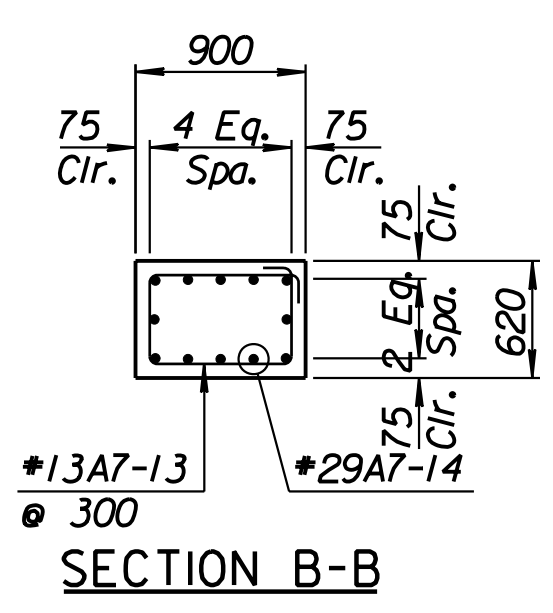
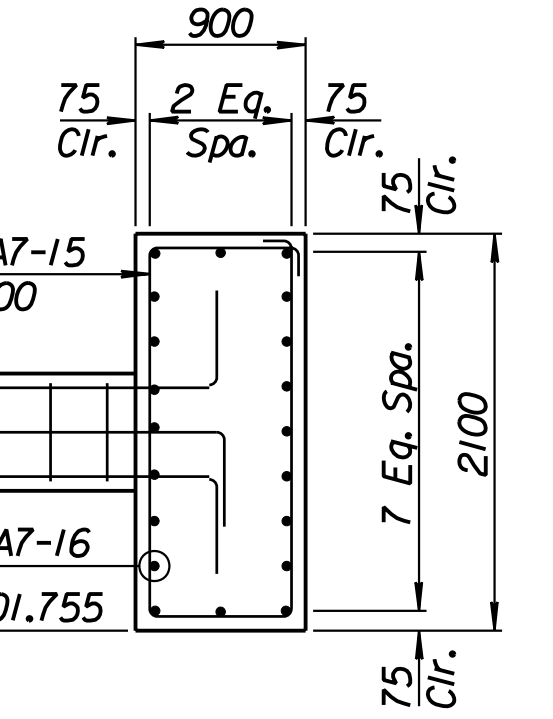
TIE BACK QUANTITIES		
Item	Quantity	Unit
Concrete (Grade 30)(AE)	90.4	m <sup>3</sup>
Reinforcing Steel (Grade 420)	7660	kg



SECTION A-A



BENDING DIAGRAMS  
All dimensions are out to out of bars.



SECTION B-B

1			
No.	Revisions	By	Date
CITY OF WICHITA			
<b>MAIZE NORTHWEST WALL</b>			
STA. 15+529.004 TO STA. 15+558.401			
SEDGWICK COUNTY			
Professional Engineering Consultants, P.A.			
303 S. TOPEKA • WICHITA, KANSAS 67202			
316-262-2691 • FAX 316-262-3003			
Designed by	P.D.F.	Checked by	R.A.S.
Drawn by	W.L.L.	Date	Apr. 2002
		Job No.	97362

RECORD DRAWING

Drawn by: wil  
 Plotted by: drp  
 3-25-2002  
 I:/1997/97362/As-Built/dgn/s/Vol 2/Sh 271-Maize-NWwall-1.dgn Last Rev: B-22-07 By: gdr