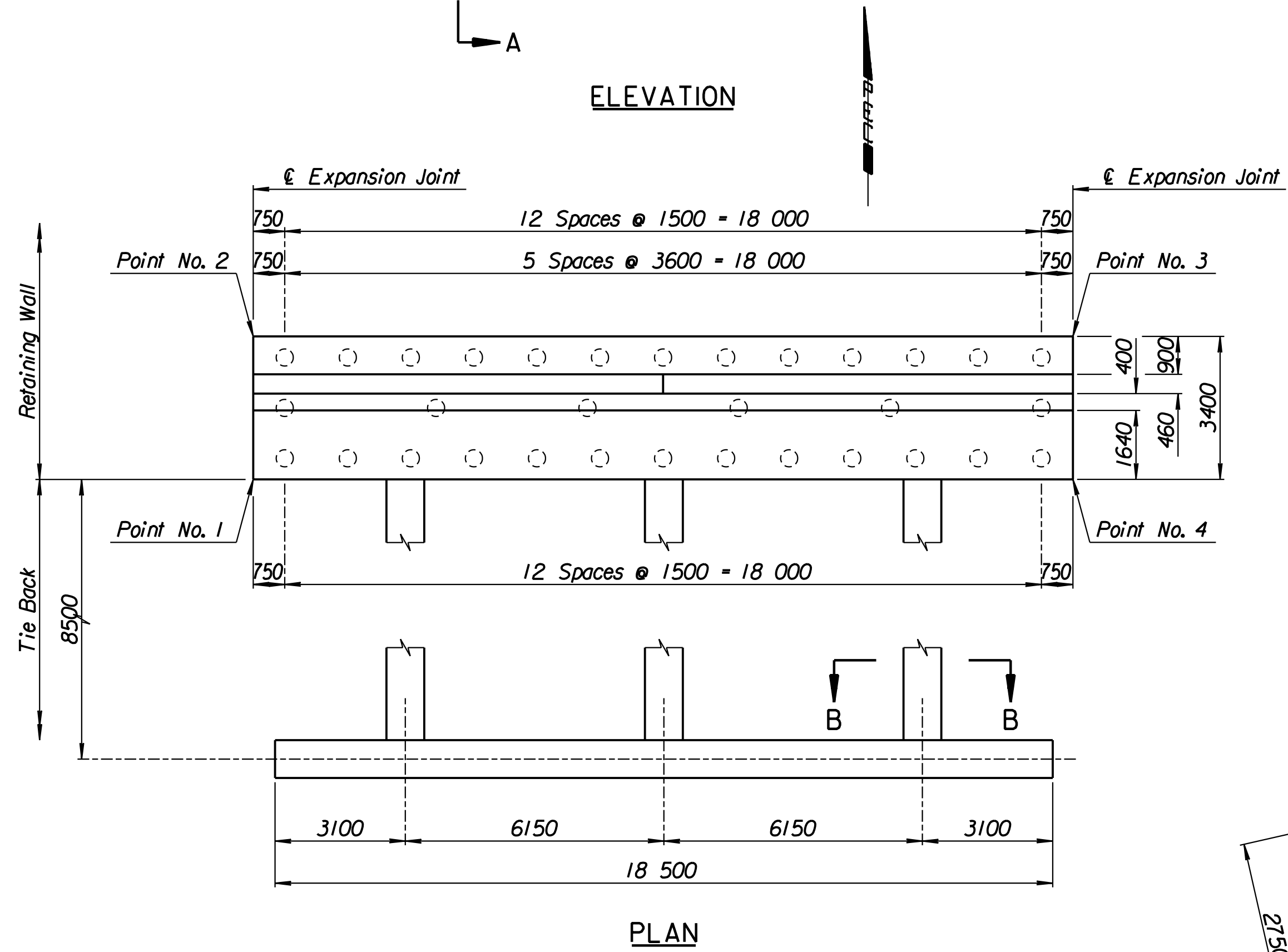
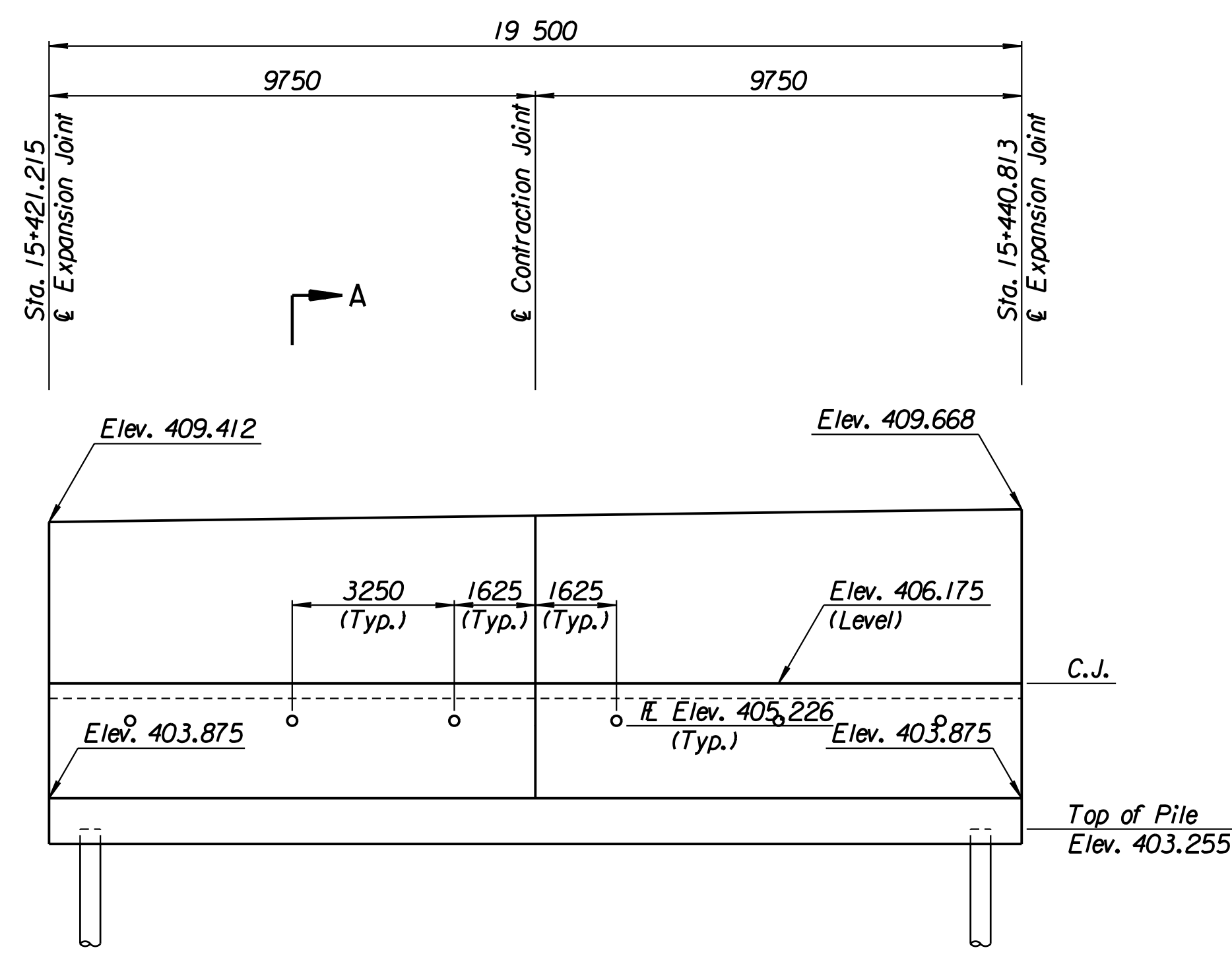


STATE	PROJECT NO.	YEAR	SHEET NO.	TOTAL SHEETS
KANSAS	54-87 K-6657-01	2002	275	1122

LAYOUT INFORMATION				
Point No.	North Coordinate	East Coordinate	Station	Offset
1	511371.190	491422.310	15+421.215	15.995 Lt.
2	511374.558	491421.849	15+421.215	19.395 Lt.
3	511377.251	491441.157	15+440.813	19.395 Lt.
4	511373.885	491441.636	15+440.813	15.995 Lt.

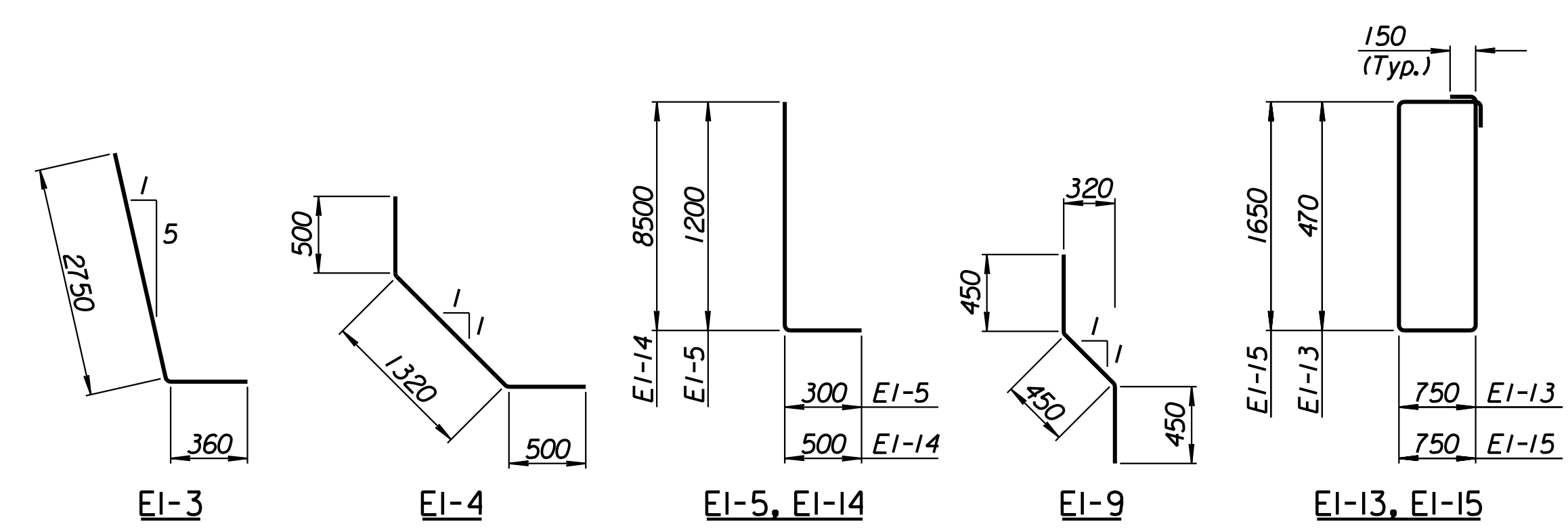
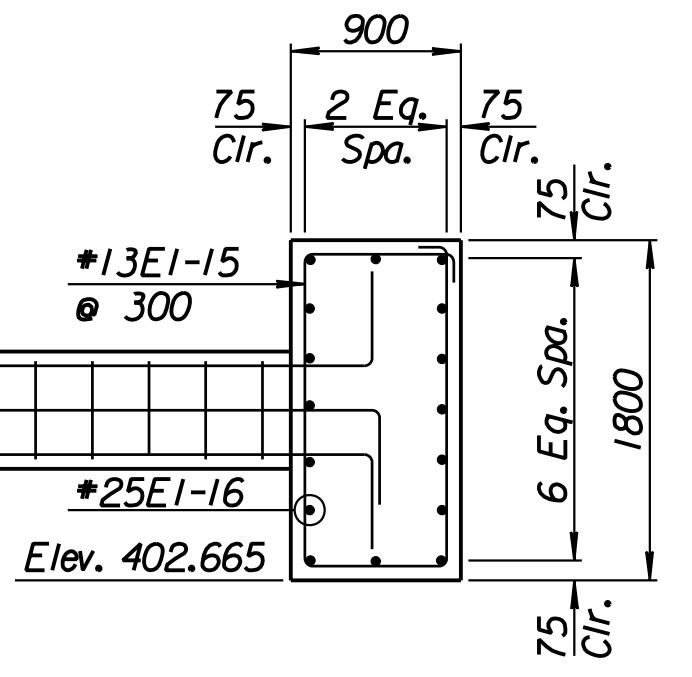
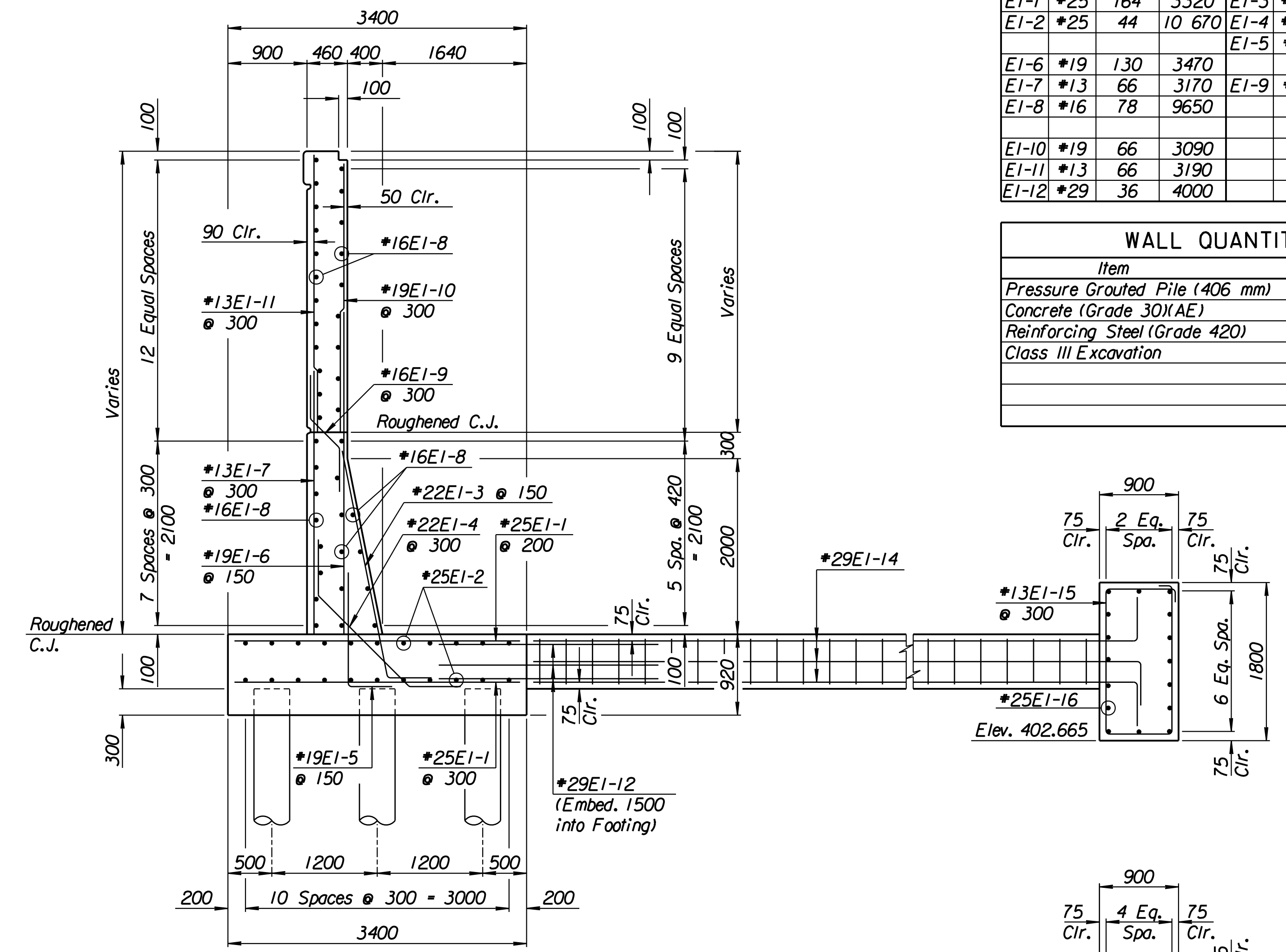
REINFORCING STEEL							
Straight Bars				Bent Bars			
Mark	Size	Number	Length	Mark	Size	Number	Length
EI-1	*25	164	3320	EI-3	*22	130	3110
EI-2	*25	44	10 670	EI-4	*22	66	2320
EI-6	*19	130	3470	EI-5	*19	130	1500
EI-7	*13	66	3170	EI-9	*16	66	1350
EI-8	*16	78	9650				
EI-10	*19	66	3090				
EI-11	*13	66	3190				
EI-12	*29	36	4000				

WALL QUANTITIES		
Item	Quantity	Unit
Pressure Grouted Pile (406 mm)	384.0	m
Concrete (Grade 30)(AE)	119.4	m ³
Reinforcing Steel (Grade 420)	10 076	kg
Class III Excavation	117.6	m ³



TIE BACK REINFORCING STEEL							
Straight Bars			Bent Bars				
Mark	Size	Number	Length	Mark	Size	Number	Length
EI-16	*25	32	10 170	EI-13	*13	81	2740
				EI-14	*29	36	9000
				EI-15	*13	63	5100

TIE BACK QUANTITIES		
Item	Quantity	Unit
Concrete (Grade 30)(AE)	43.4	m ³
Reinforcing Steel (Grade 420)	3472	kg



BENDING DIAGRAMS
All dimensions are out to out of bars.

Drawn by: wil
 Plotted by: drp
 3-25-2002
 I:/1997/97362/As-Built/dgn/s/Vol 2/Sh 275-Maize-NWwall-5.dgn Last Rev: 8-22-07 By: gdr

1			
No.	Revisions	By	Date
CITY OF WICHITA			
MAIZE NORTHWEST WALL			
STA. 15+421.215 TO STA. 15+440.813			
SEDGWICK COUNTY			
Professional Engineering Consultants, P.A. 303 S. TOPEKA • WICHITA, KANSAS 67202 316-262-2691 • FAX 316-262-3003			
Designed by	P.D.F.	Checked by	R.A.S.
Drawn by	W.L.L.	Date	Apr. 2002
		Job No.	97362