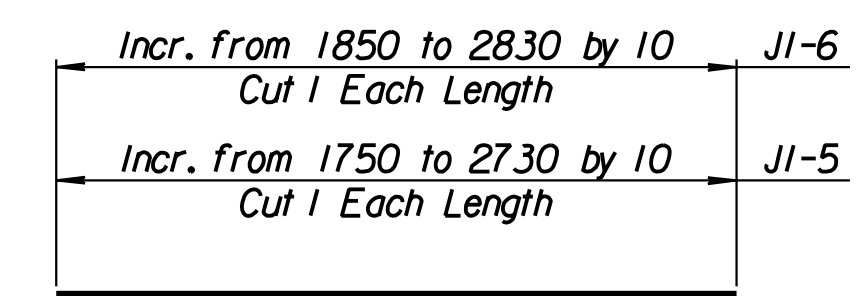
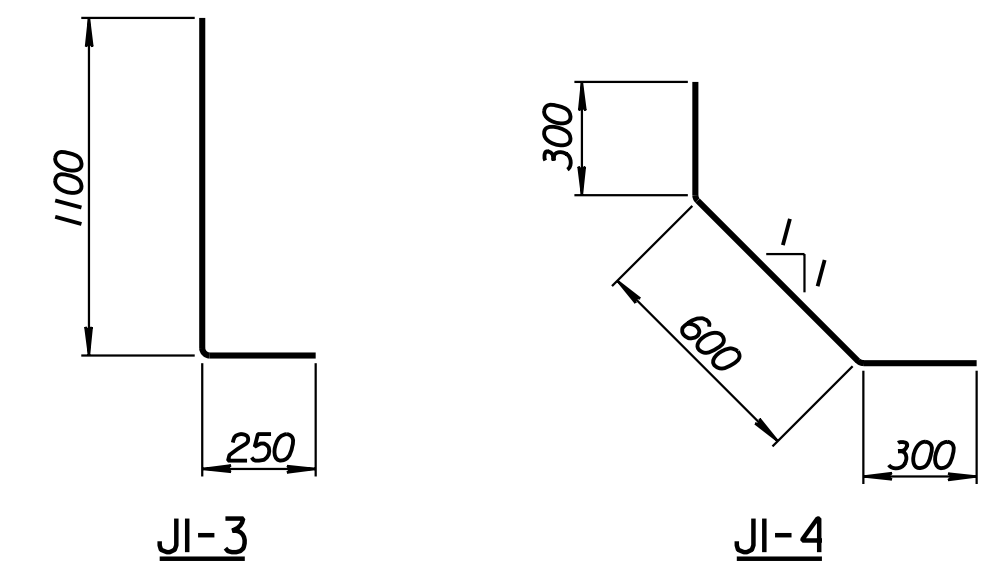


STATE	PROJECT NO.	YEAR	SHEET NO.	TOTAL SHEETS
KANSAS	54-87 K-6657-01	2002	279	1122

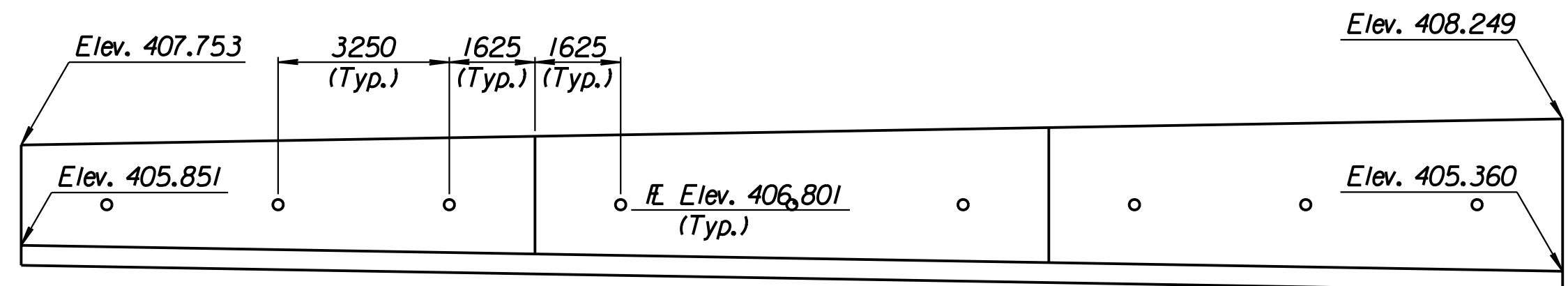
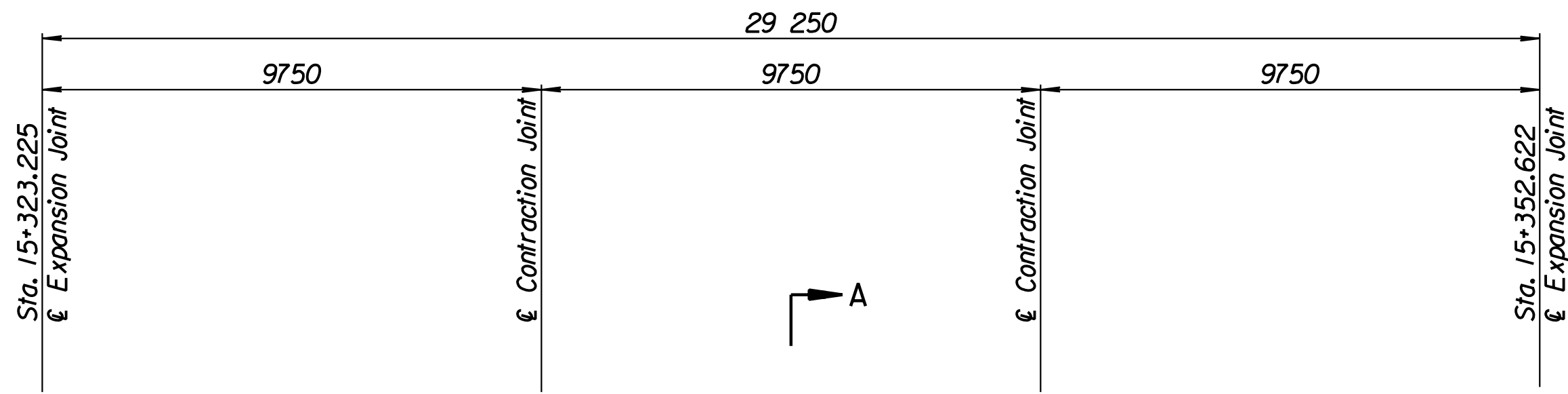
LAYOUT INFORMATION				
Point No.	North Coordinate	East Coordinate	Station	Offset
1	511359.251	491325.479	15+323.225	15.995 Lt.
2	511362.630	491325.108	15+323.225	19.395 Lt.
3	511365.940	491354.163	15+352.622	19.395 Lt.
4	511362.563	491354.561	15+352.622	15.995 Lt.

REINFORCING STEEL							
Straight Bars				Bent Bars			
Mark	Size	Number	Length	Mark	Size	Number	Length
J1-1	*16	246	3320	J1-3	*16	195	1350
J1-2	*13	44	14 960	J1-4	*13	99	1200
J1-5	*16	99	Varies				
J1-6	*13	99	Varies				
J1-7	*13	54	9650				

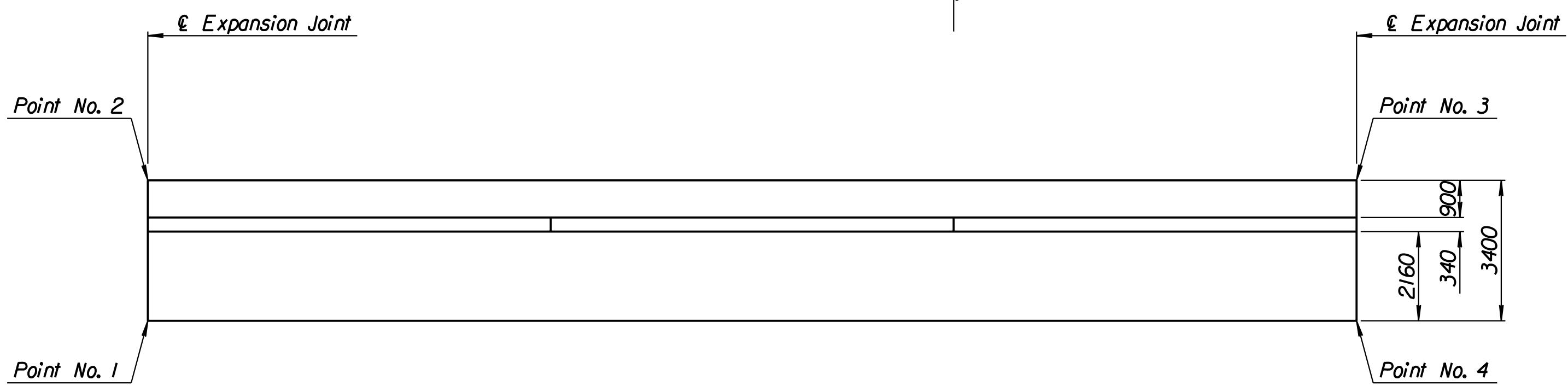
WALL QUANTITIES		
Item	Quantity	Unit
Concrete (Grade 30)(AE)	61.3	m <sup>3</sup>
Reinforcing Steel (Grade 420)	3541	kg
Class III Excavation	0.0	m <sup>3</sup>



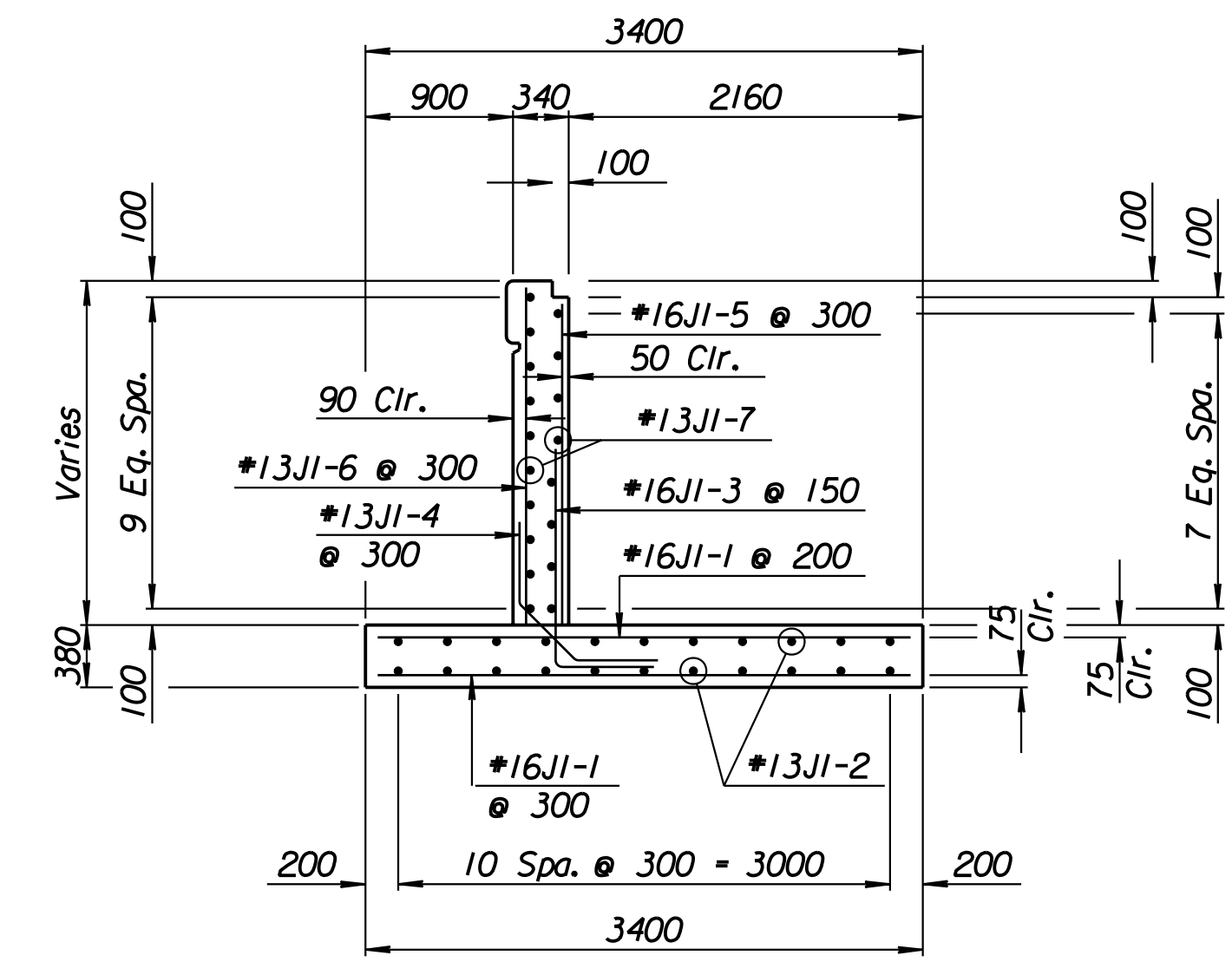
**BENDING DIAGRAMS**  
All dimensions are out to out of bars.



**ELEVATION**



**PLAN**



**SECTION A-A**

Drawn by: wil  
 Plotted by: drp 3-25-2002  
 I:/1997/97362/As-Built/dgn/s/Vol 2/Sh 279-Maize-NWwall-9.dgn Last Rev: 8-22-07 By: gdr

**RECORD DRAWING**

1			
No.	Revisions	By	Date
CITY OF WICHITA			
<b>MAIZE NORTHWEST WALL</b>			
STA. 15+323.225 TO STA. 15+352.622			
SEDGWICK COUNTY			
Professional Engineering Consultants, P.A.			
303 S. TOPEKA • WICHITA, KANSAS 67202			
316-262-2691 • FAX 316-262-3003			
Designed by	P.D.F.	Checked by	R.A.S.
Drawn by	W.L.L.	Date	Apr. 2002
		Job No.	97362