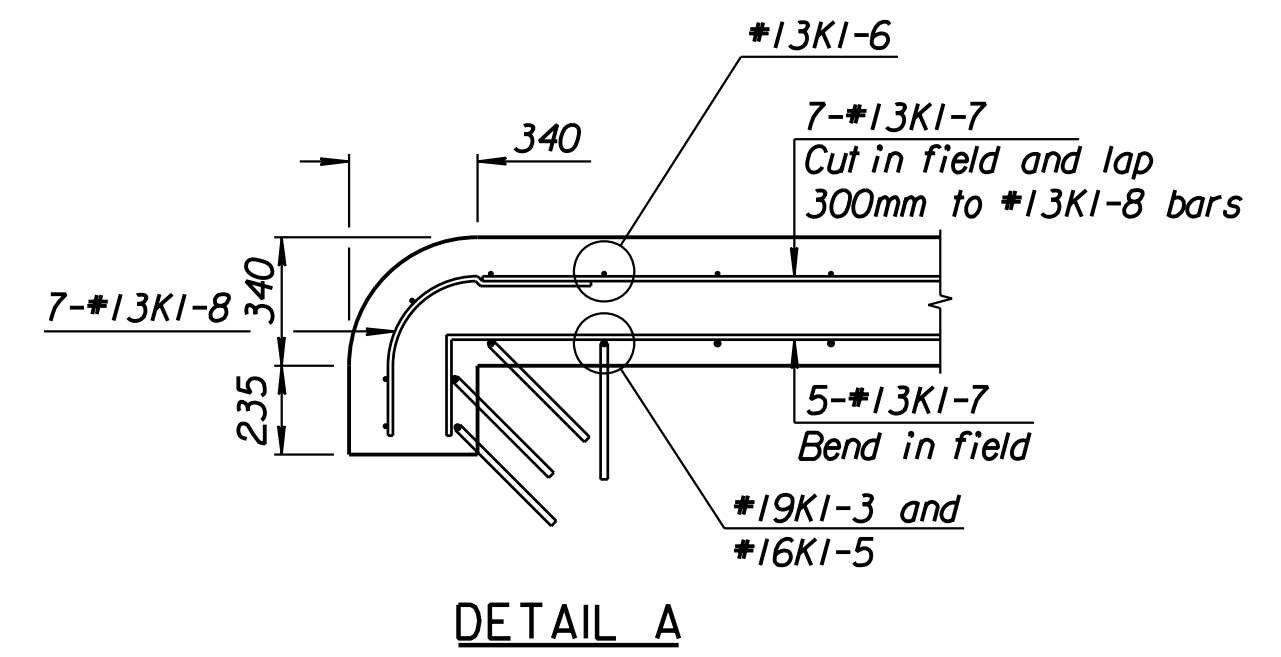
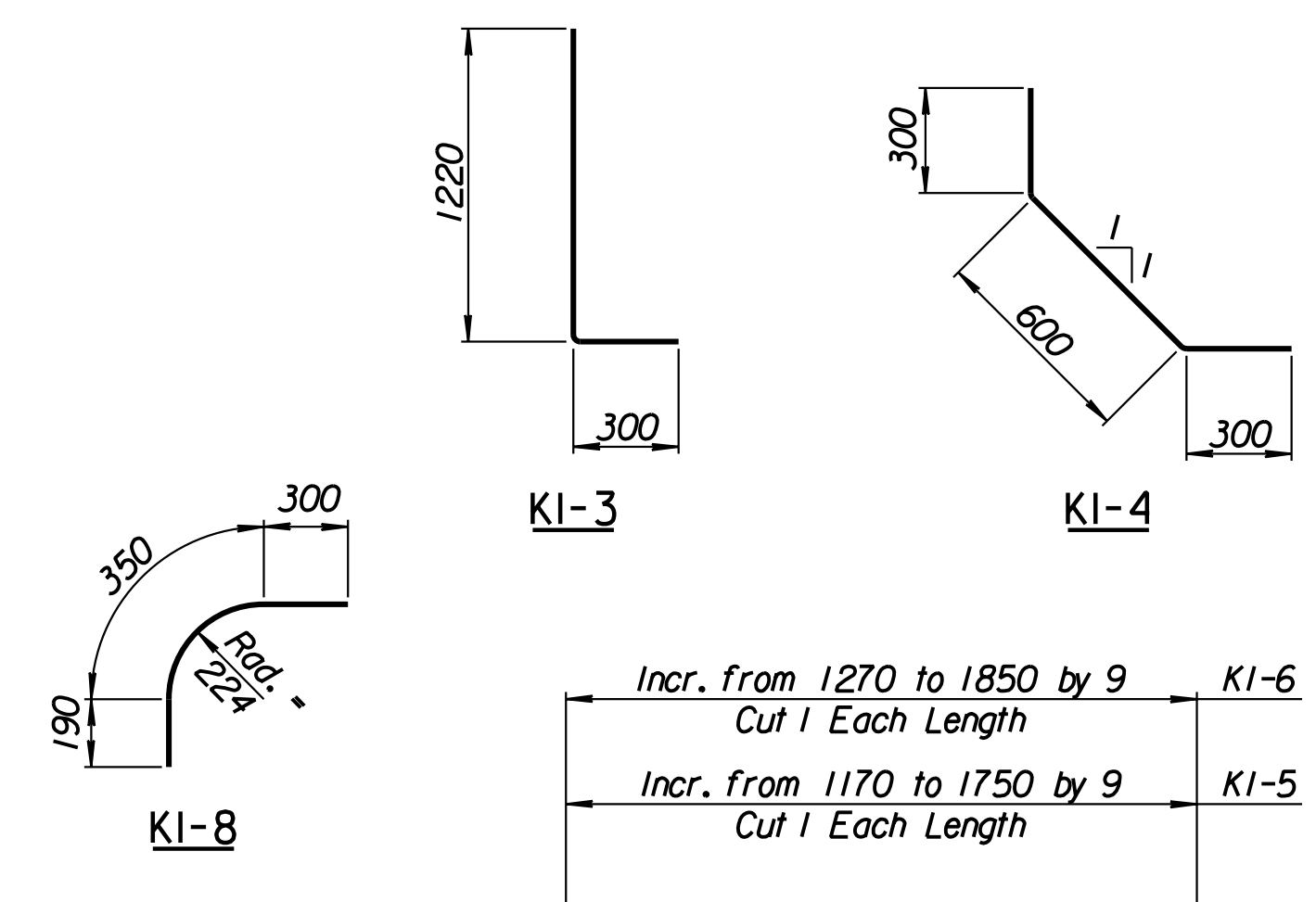
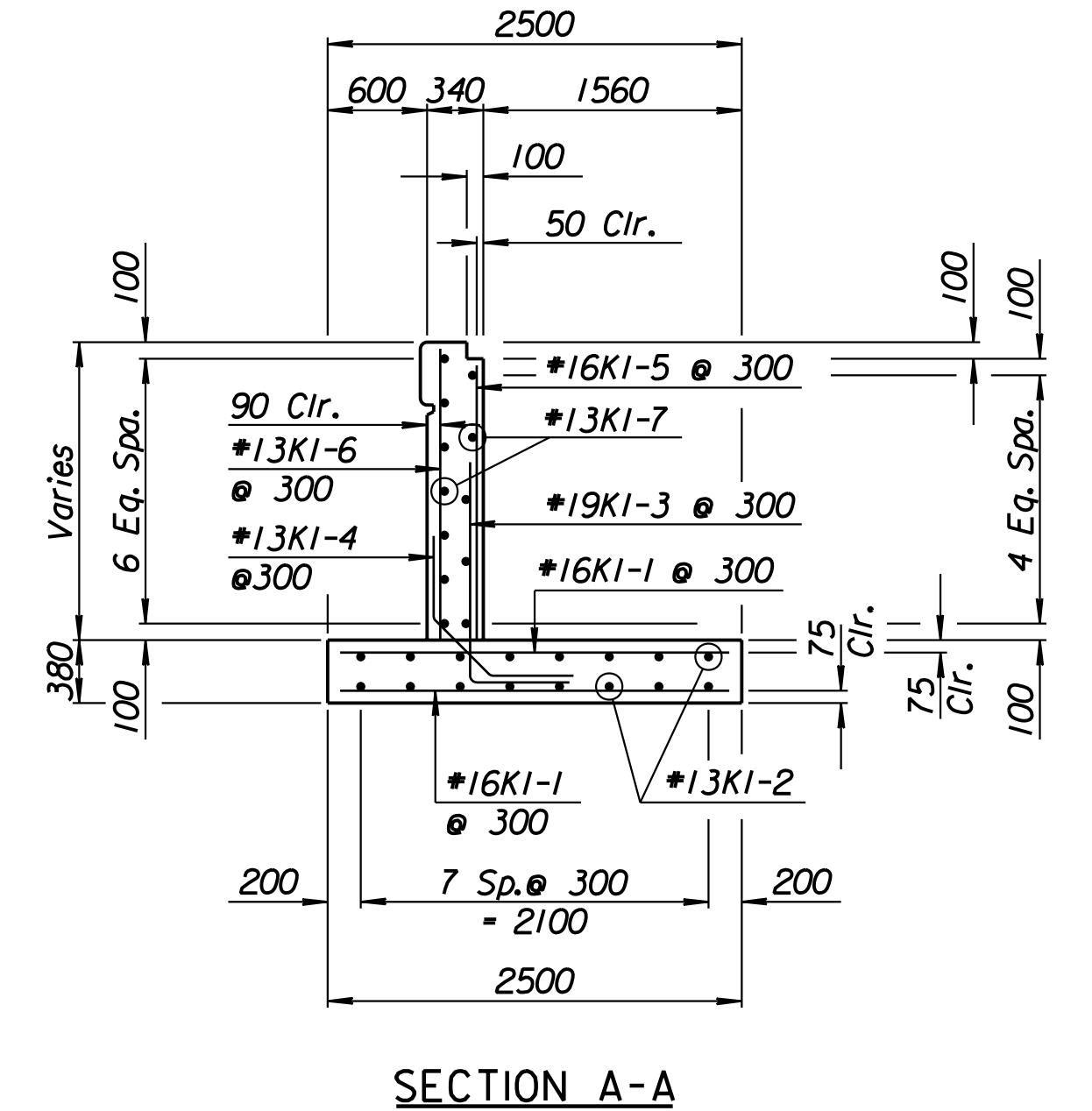
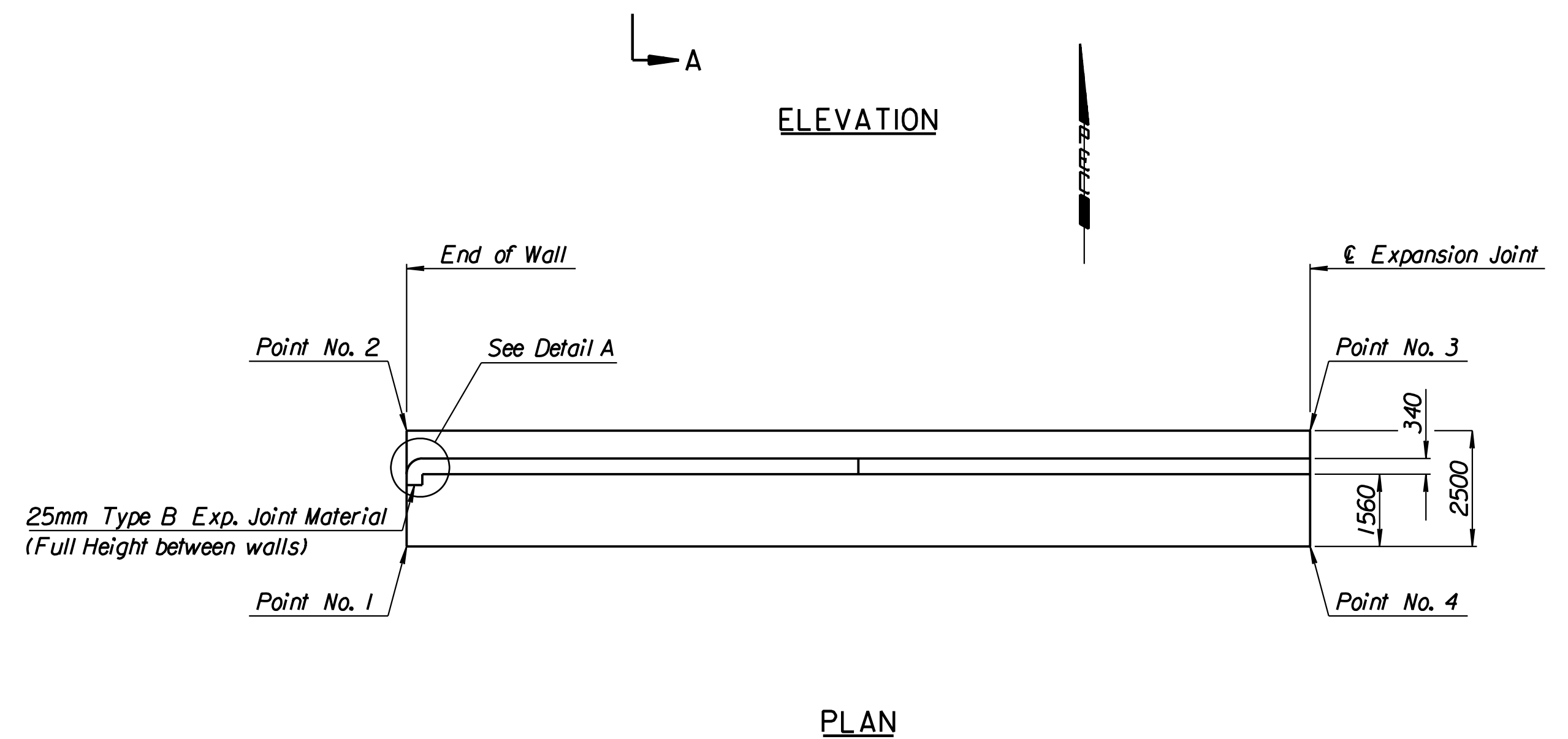
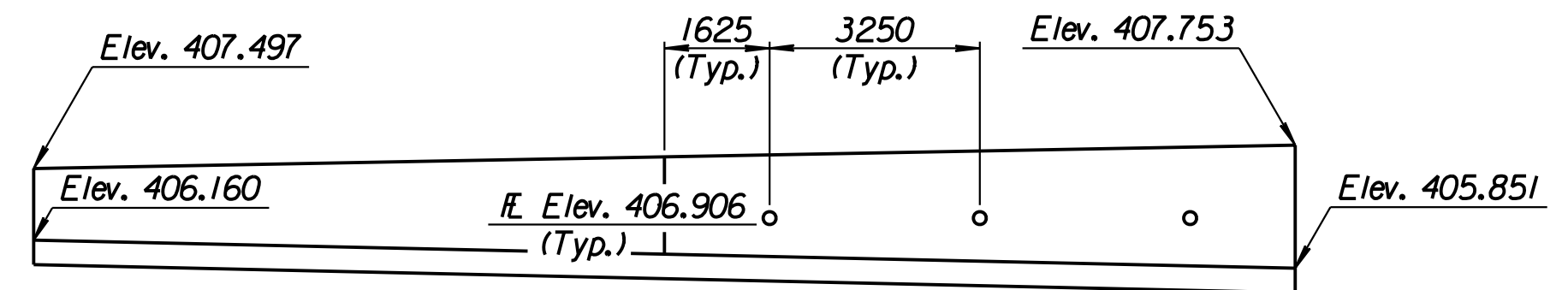
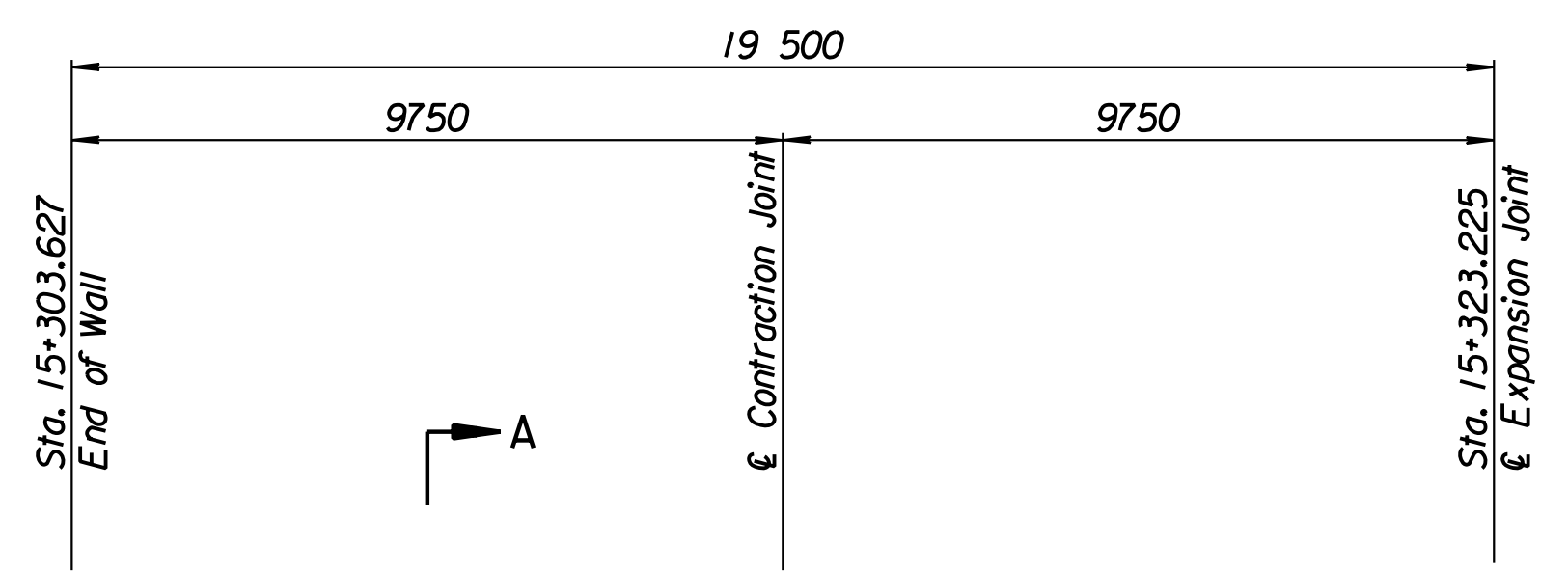


STATE	PROJECT NO.	YEAR	SHEET NO.	TOTAL SHEETS
KANSAS	54-87 K-6657-01	2002	280	1122

LAYOUT INFORMATION				
Point No.	North Coordinate	East Coordinate	Station	Offset
1	511357.768	491306.015	15+303.627	16.595 Lt.
2	511360.254	491305.755	15+303.627	19.095 Lt.
3	511362.332	491325.141	15+323.225	19.095 Lt.
4	511359.847	491325.414	15+323.225	16.595 Lt.

REINFORCING STEEL							
Straight Bars				Bent Bars			
Mark	Size	Number	Length	Mark	Size	Number	Length
KI-1	*16	132	2420	KI-3	*19	67	1520
KI-2	*13	32	10 100	KI-4	*13	66	1200
KI-5	*16	67	Varies	KI-8	*13	7	840
KI-6	*13	68	Varies				
KI-7	*13	24	9650				

WALL QUANTITIES		
Item	Quantity	Unit
Concrete (Grade 30)(AE)	29.1	m ³
Reinforcing Steel (Grade 420)	1617	kg
Class III Excavation	0.0	m ³



DETAIL A
 Note: End of wall section has an additional 2-*13KI-6, 1-*19 KI-3 and 1-*16KI-5.

Drawn by: wil
 Plotted by: drp
 3-25-2002
 I:/1997/97362/As-Built/dgn/s/Vol 2/Sh 280-Maize-NWwall-10.dgn
 Last Rev: 8-22-07 By: gdr

RECORD DRAWING

1			
No.	Revisions	By	Date
CITY OF WICHITA			
MAIZE NORTHWEST WALL			
STA. 15+303.627 TO STA. 15+323.225			
SEDGWICK COUNTY			
Professional Engineering Consultants, P.A.			
303 S. TOPEKA • WICHITA, KANSAS 67202 316-262-2691 • FAX 316-262-3003			
Designed by	P.D.F.	Checked by	R.A.S.
Drawn by	W.L.L.	Date	Apr. 2002
		Job No.	97362