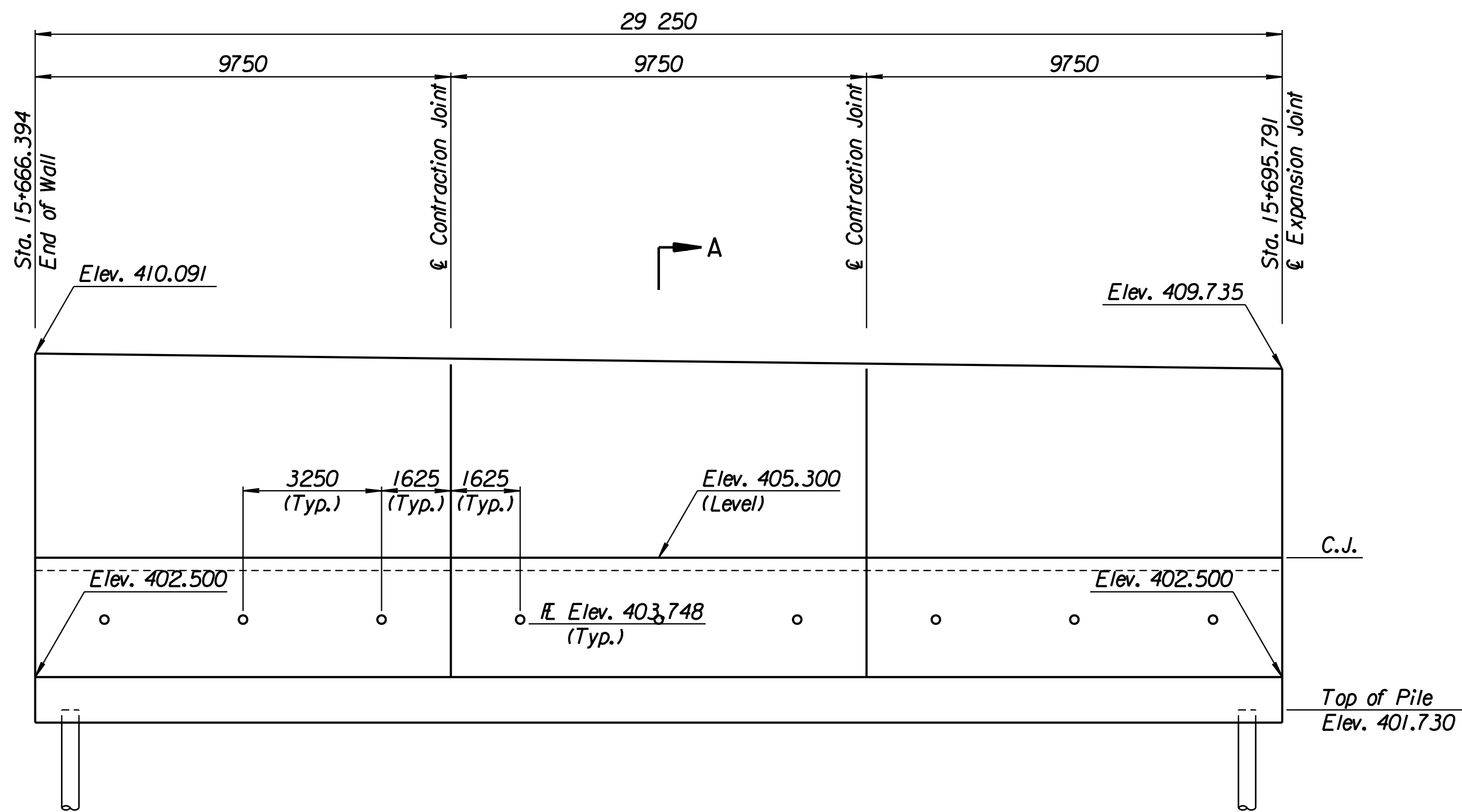


STATE	PROJECT NO.	YEAR	SHEET NO.	TOTAL SHEETS
KANSAS	54-87 K-6657-01	2002	281	1122

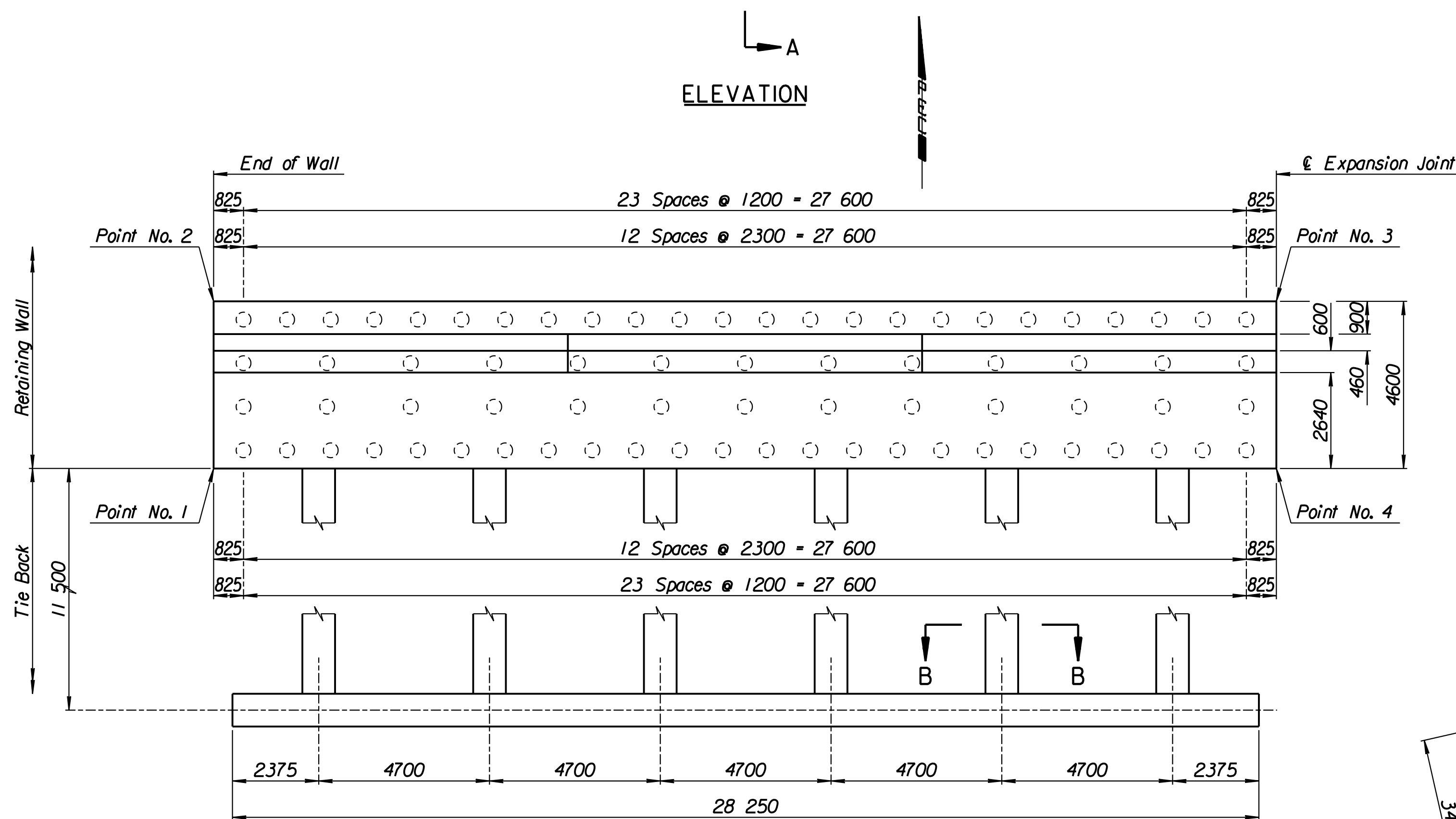
LAYOUT INFORMATION				
Point No.	North Coordinate	East Coordinate	Station	Offset
1	511411.079	491663.146	15+666.394	14.795 Lt.
2	511415.585	491662.222	15+666.394	19.395 Lt.
3	511421.571	491690.846	15+695.791	19.395 Lt.
4	511417.072	491691.805	15+695.791	14.795 Lt.

REINFORCING STEEL							
Straight Bars				Bent Bars			
Mark	Size	Number	Length	Mark	Size	Number	Length
A2-1	*25	342	4520	A2-3	*29	195	3940
A2-2	*25	60	15 540	A2-4	*19	195	2620
A2-6	*29	195	5010	A2-5	*29	195	2500
A2-7	*13	99	3770	A2-9	*19	99	1350
A2-8	*16	147	9650				
A2-10	*19	99	4280				
A2-11	*13	99	4380				
A2-12	*29	72	4000				

WALL QUANTITIES		
Item	Quantity	Unit
Pressure Grouted Pile (406 mm)	888.0	m
Concrete (Grade 30)(AE)	265.4	m ³
Reinforcing Steel (Grade 420)	27 992	kg
Class III Excavation	376.1	m ³



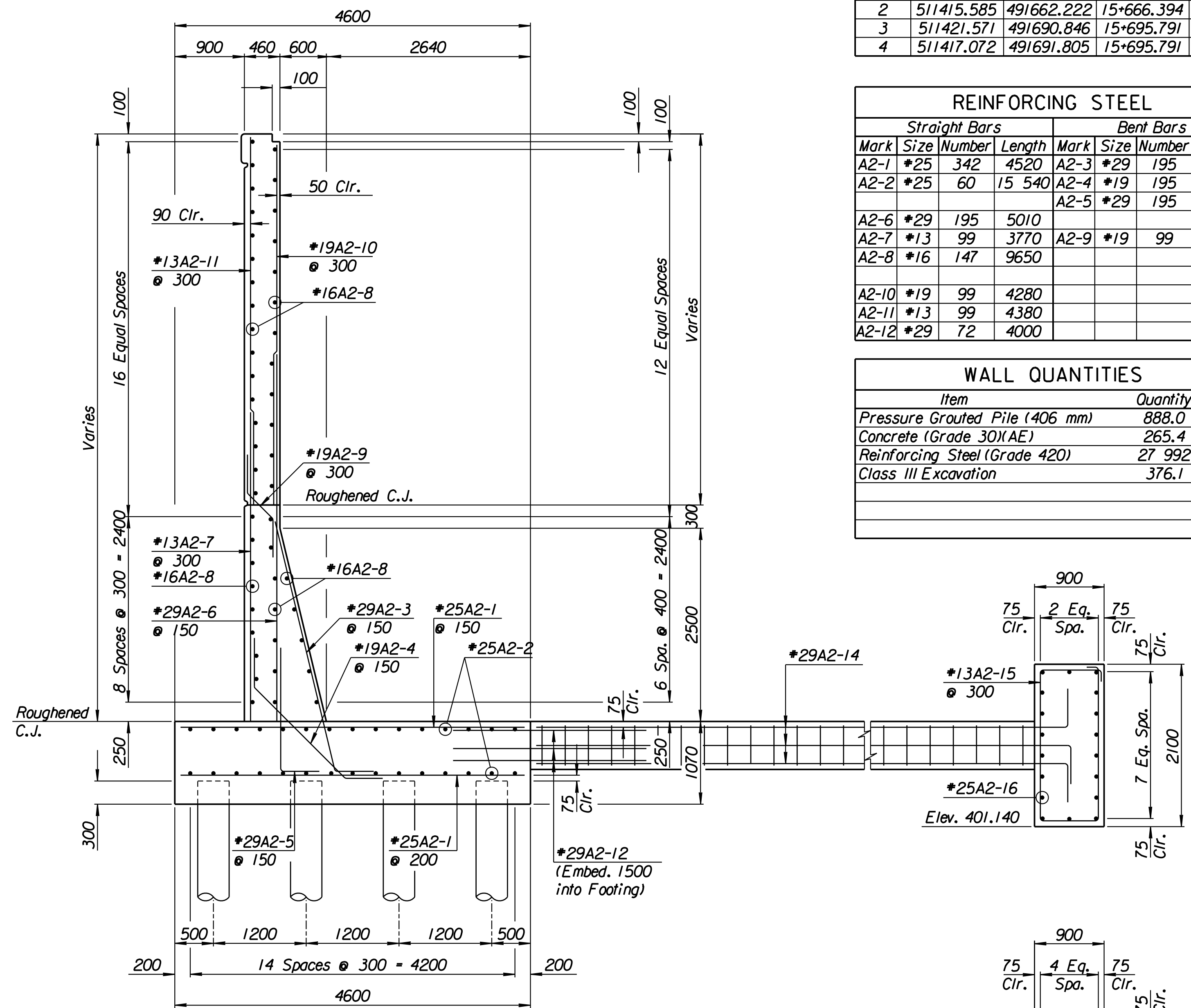
ELEVATION



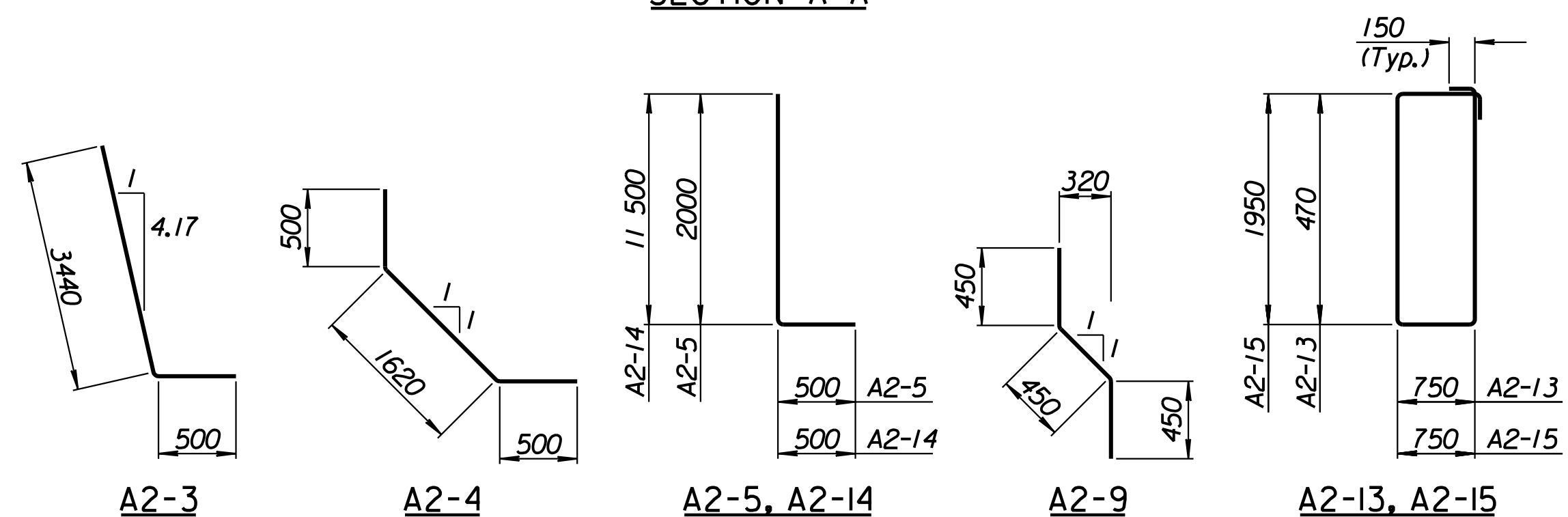
PLAN

TIE BACK REINFORCING STEEL							
Straight Bars				Bent Bars			
Mark	Size	Number	Length	Mark	Size	Number	Length
A2-16	*25	36	15 070	A2-13	*13	222	2740
				A2-14	*29	72	12 000
				A2-15	*13	94	5700

TIE BACK QUANTITIES		
Item	Quantity	Unit
Concrete (Grade 30)(AE)	90.4	m ³
Reinforcing Steel (Grade 420)	7660	kg



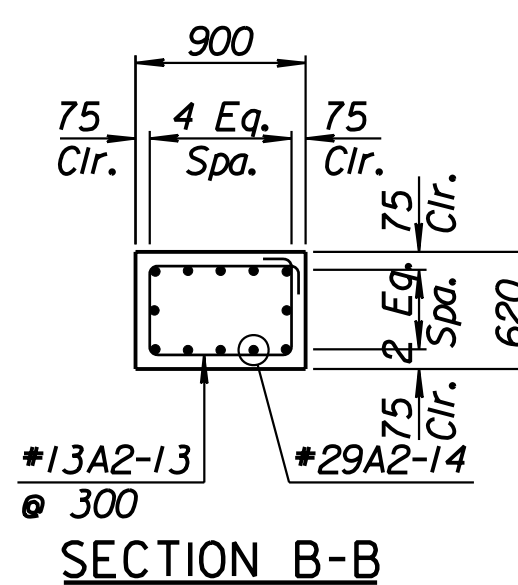
SECTION A-A



BENDING DIAGRAMS

All dimensions are out to out of bars.

RECORD DRAWING



SECTION B-B

No.	Revisions	By	Date

CITY OF WICHITA

MAIZE NORTHEAST WALL
STA. 15+666.394 TO STA. 15+695.791
SEDGWICK COUNTY

Professional Engineering Consultants, P.A.
303 S. TOPEKA • WICHITA, KANSAS 67202
316-262-2691 • FAX 316-262-3003

Designed by P.D.F. Checked by R.A.S.
Drawn by W.L.L. Date Apr. 2002 Job No. 97362

Drawn by: wil
 Plotted by: drp
 3-25-2002
 1:1997197362/As-Built/dgn/s/Vol 2/Sh 281-Maize-NE-wall-8.dgn Last Rev: 8-22-07 By: gdr