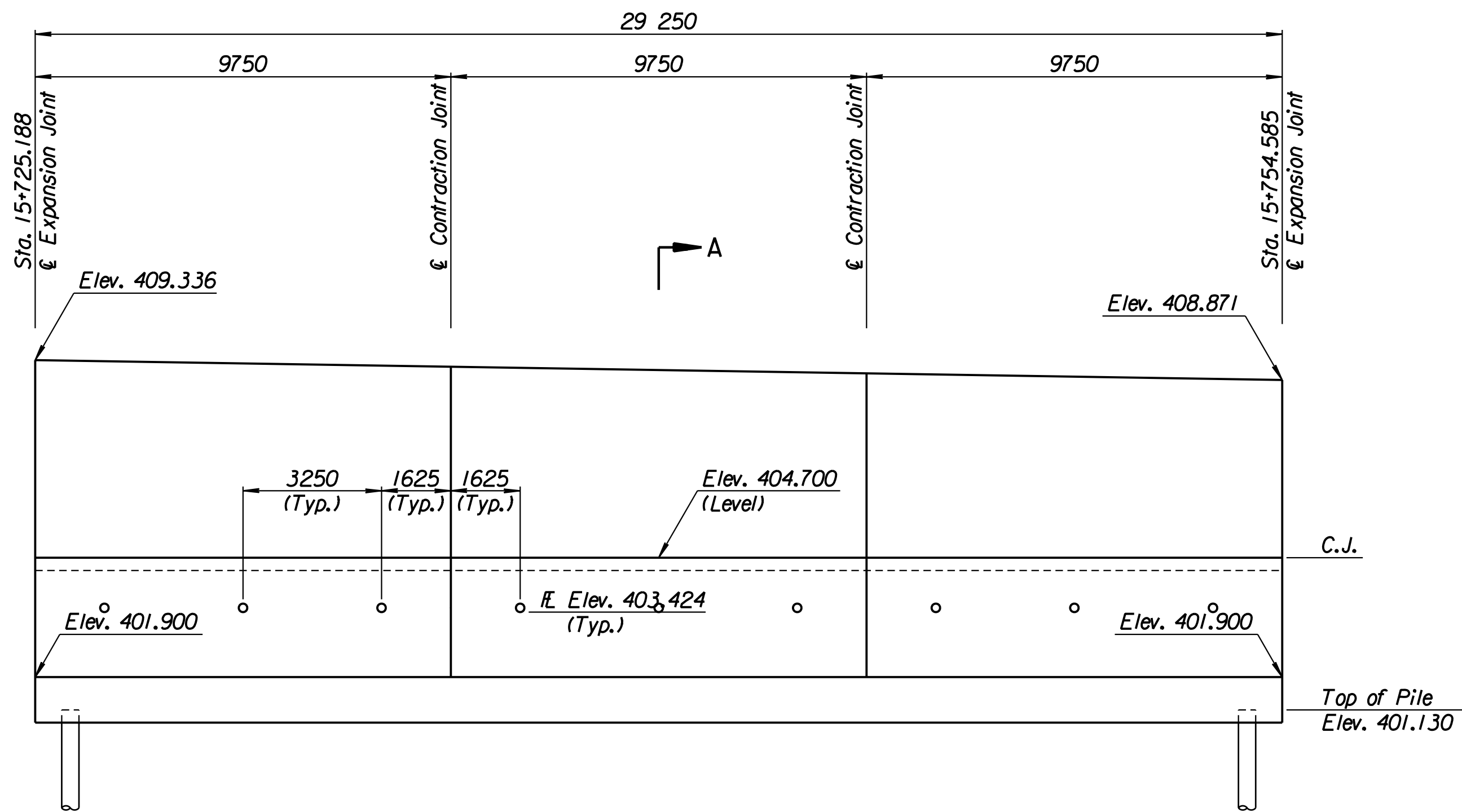


STATE	PROJECT NO.	YEAR	SHEET NO.	TOTAL SHEETS
KANSAS	54-87 K-6657-01	2002	283	1122

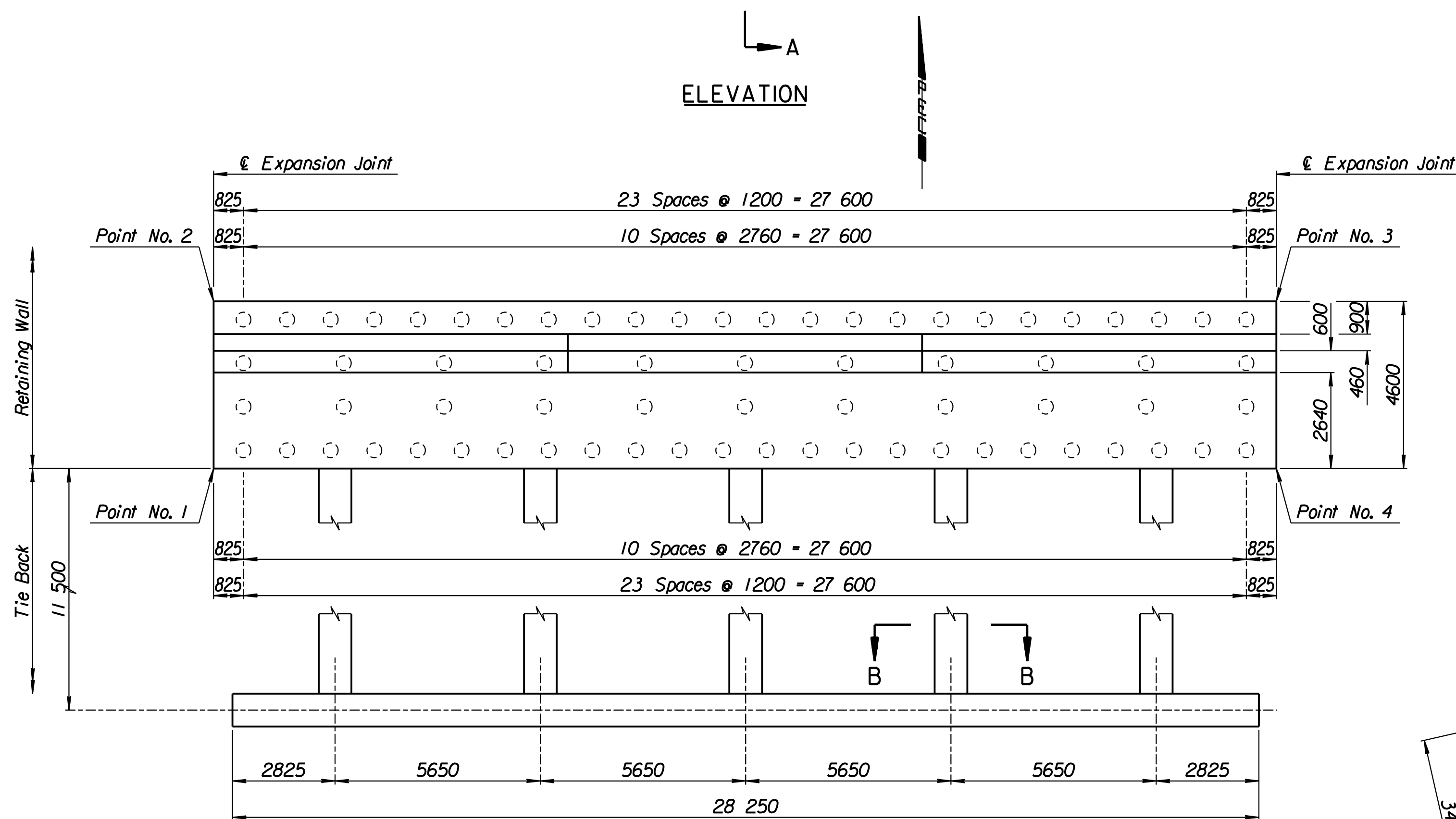
LAYOUT INFORMATION				
Point No.	North Coordinate	East Coordinate	Station	Offset
1	511423.293	491720.416	15+725.188	14.795 Lt.
2	511427.784	491719.421	15+725.188	19.395 Lt.
3	511434.224	491747.946	15+754.585	19.395 Lt.
4	511429.741	491748.976	15+754.585	14.795 Lt.

REINFORCING STEEL							
Straight Bars				Bent Bars			
Mark	Size	Number	Length	Mark	Size	Number	Length
C2-1	*25	342	4520	C2-3	*29	195	3940
C2-2	*25	60	15 540	C2-4	*19	195	2620
C2-6	*29	195	5110	C2-5	*29	195	2500
C2-7	*13	99	3870	C2-9	*19	99	1350
C2-8	*16	147	9650				
C2-10	*19	99	4020				
C2-11	*13	99	4120				
C2-12	*29	60	4000				

WALL QUANTITIES		
Item	Quantity	Unit
Pressure Grouted Pile (406 mm)	840.0	m
Concrete (Grade 30)(AE)	262.5	m ³
Reinforcing Steel (Grade 420)	27 775	kg
Class III Excavation	341.0	m ³



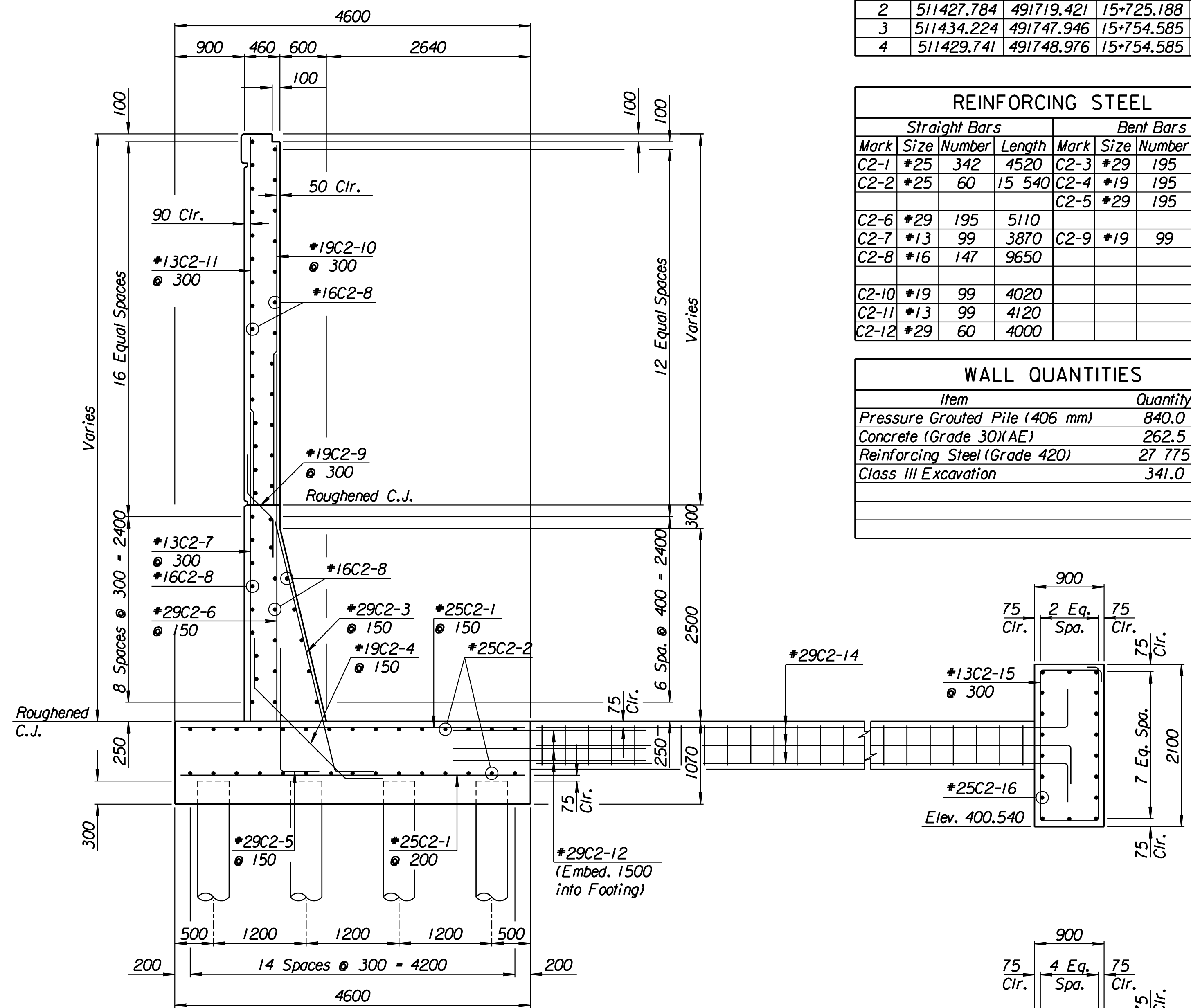
ELEVATION



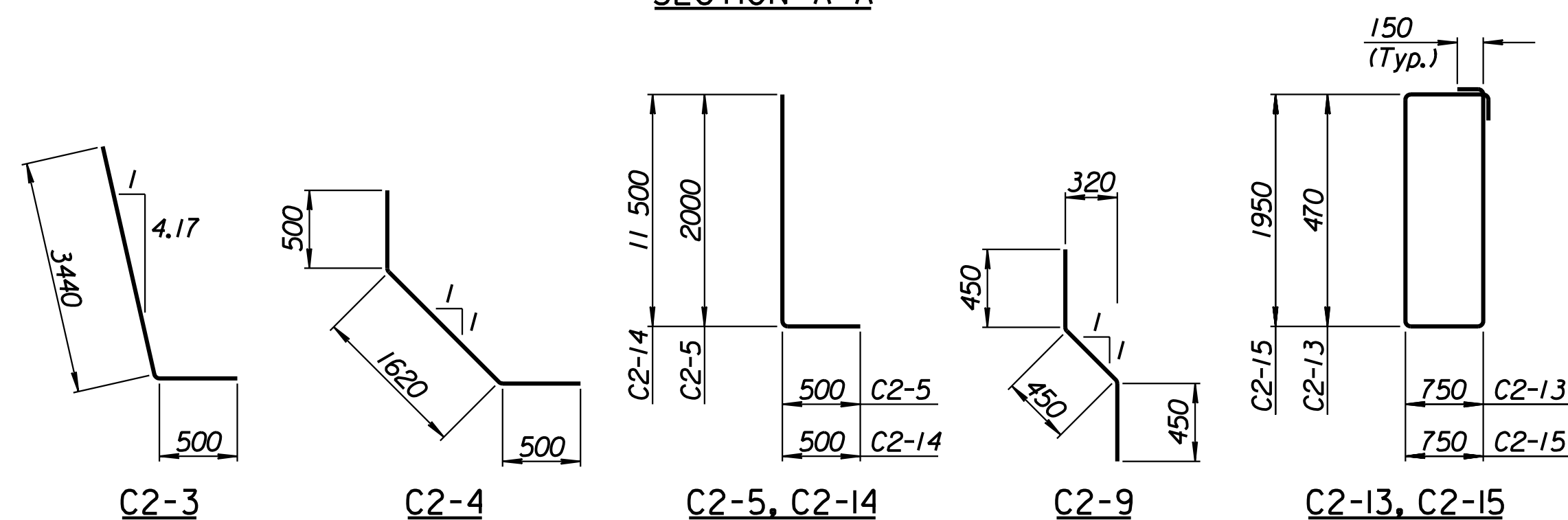
PLAN

TIE BACK REINFORCING STEEL							
Straight Bars				Bent Bars			
Mark	Size	Number	Length	Mark	Size	Number	Length
C2-16	*25	36	15 040	C2-13	*13	185	2740
				C2-14	*29	60	12 000
				C2-15	*13	94	5700

TIE BACK QUANTITIES		
Item	Quantity	Unit
Concrete (Grade 30)(AE)	84.2	m ³
Reinforcing Steel (Grade 420)	6831	kg



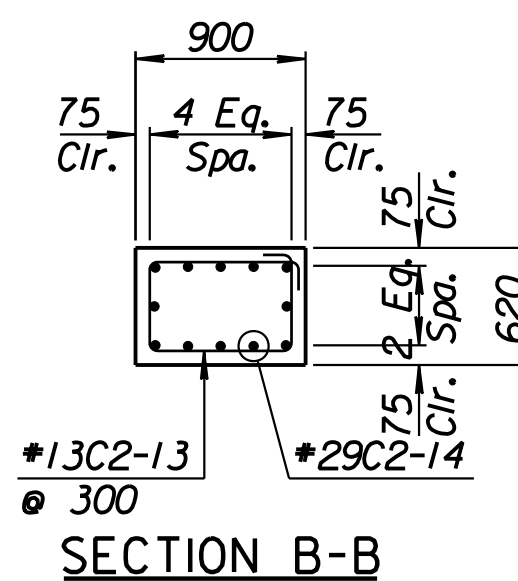
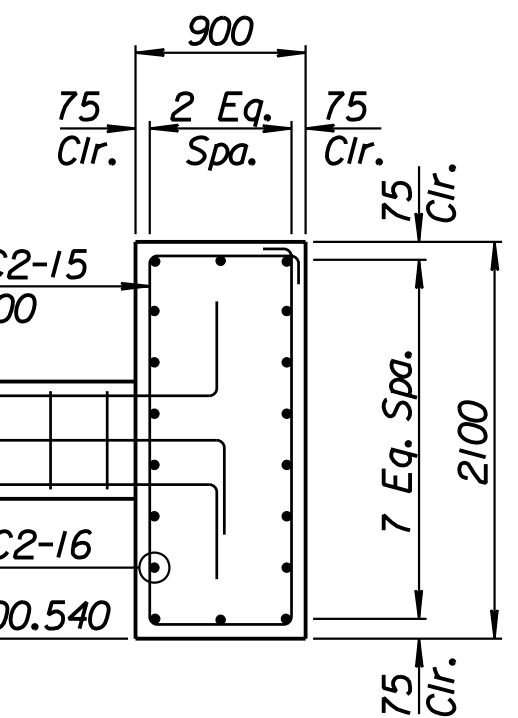
SECTION A-A



BENDING DIAGRAMS

All dimensions are out to out of bars.

RECORD DRAWING



SECTION B-B

No.	Revisions	By	Date
-----	-----------	----	------

CITY OF WICHITA
MAIZE NORTHEAST WALL
 STA. 15+725.188 TO STA. 15+754.585
 SEDGWICK COUNTY

Professional Engineering Consultants, P.A.
 303 S. TOPEKA • WICHITA, KANSAS 67202
 316-262-2691 • FAX 316-262-3003

Designed by	P.D.F.	Checked by	R.A.S.
Drawn by	W.L.L.	Date	Apr. 2002
		Job No.	97362

Drawn by: wil
 Plotted by: drp
 3-25-2002
 1:1997:97:362:As-Built:1/2/5h 283-Maize-NE-wall-6.dgn Last Rev: 8-22-07 By: gdr