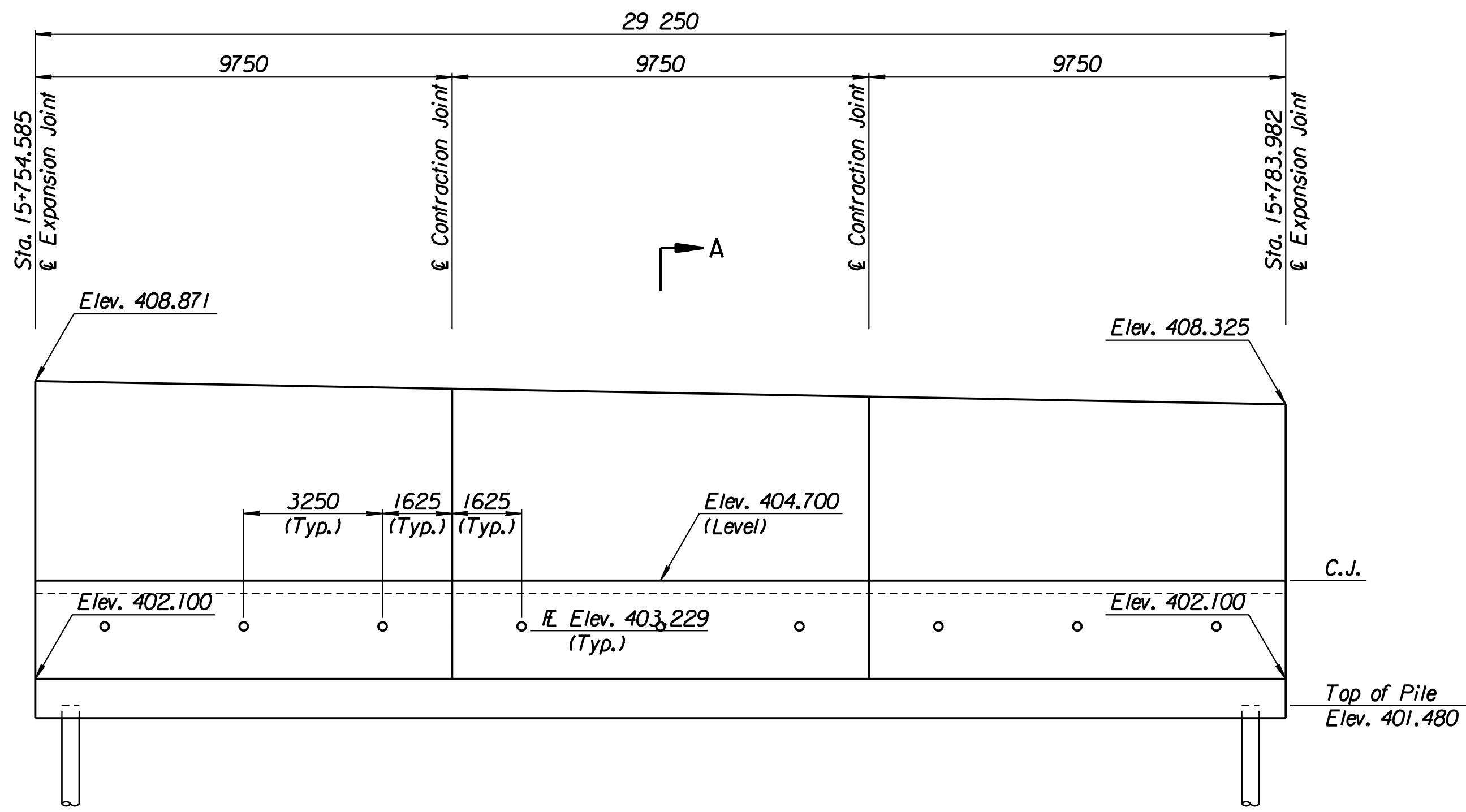


STATE	PROJECT NO.	YEAR	SHEET NO.	TOTAL SHEETS
KANSAS	54-87 K-6657-01	2002	284	1122

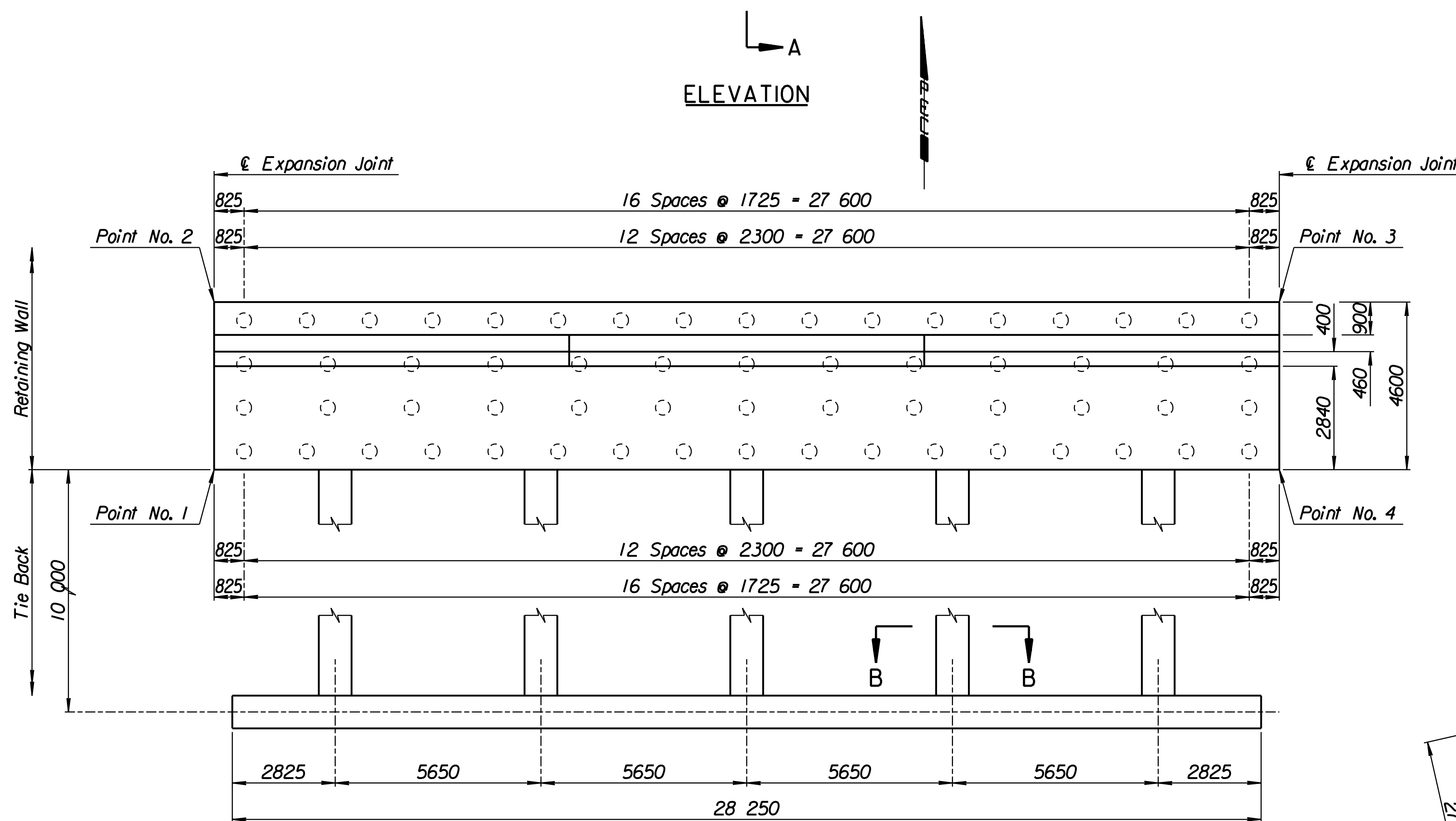
LAYOUT INFORMATION				
Point No.	North Coordinate	East Coordinate	Station	Offset
1	511429.741	491748.976	15+754.585	14.795 Lt.
2	511434.224	491747.946	15+754.585	19.395 Lt.
3	511440.891	491776.418	15+783.982	19.395 Lt.
4	511436.416	491777.485	15+783.982	14.795 Lt.

REINFORCING STEEL							
Straight Bars				Bent Bars			
Mark	Size	Number	Length	Mark	Size	Number	Length
D2-1	*25	294	4520	D2-3	*29	195	3250
D2-2	*25	60	15 540	D2-4	*19	195	2320
D2-6	*25	195	4600	D2-5	*25	195	1910
D2-7	*13	99	3750	D2-9	*19	99	1350
D2-8	*16	132	9650				
D2-10	*19	99	3480				
D2-11	*13	99	3580				
D2-12	*29	60	4000				

WALL QUANTITIES		
Item	Quantity	Unit
Pressure Grouted Pile (406 mm)	720.0	m
Concrete (Grade 30)(AE)	222.6	m <sup>3</sup>
Reinforcing Steel (Grade 420)	23 227	kg
Class III Excavation	277.0	m <sup>3</sup>



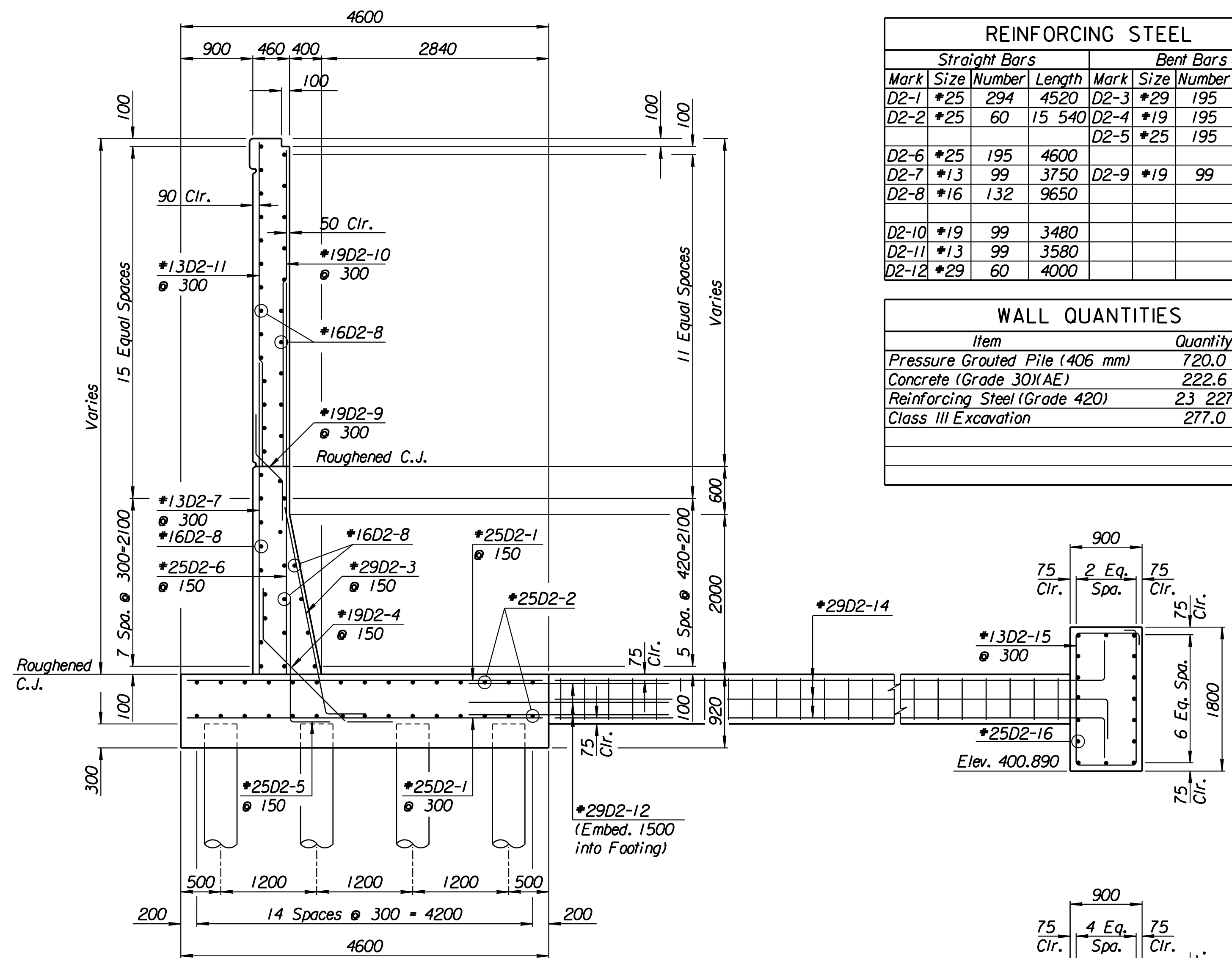
ELEVATION



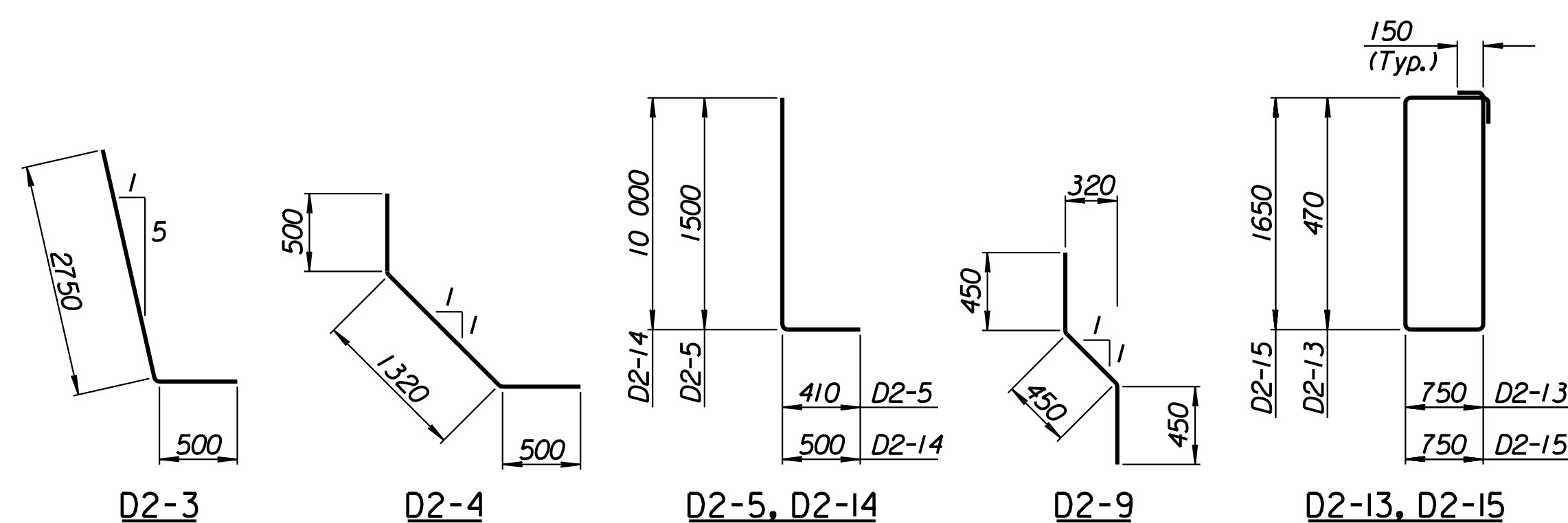
PLAN

TIE BACK REINFORCING STEEL					
Straight Bars			Bent Bars		
Mark	Size	Number	Length	Mark	Length
D2-16	*25	32	15 040	D2-13	160
				D2-14	60
				D2-15	94

TIE BACK QUANTITIES		
Item	Quantity	Unit
Concrete (Grade 30)(AE)	72.4	m <sup>3</sup>
Reinforcing Steel (Grade 420)	6012	kg



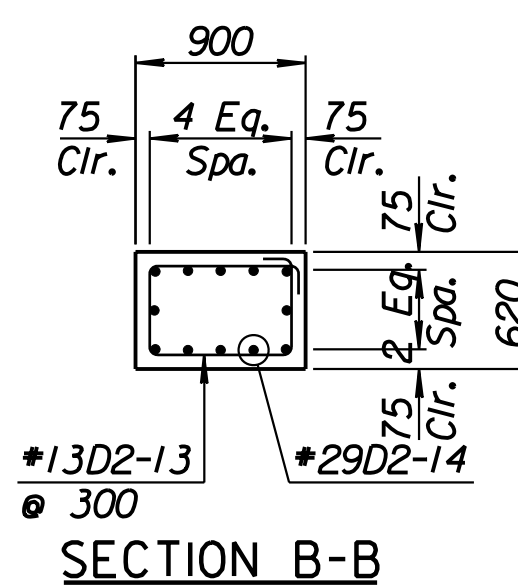
SECTION A-A



BENDING DIAGRAMS

All dimensions are out to out of bars.

RECORD DRAWING



SECTION B-B

No.	Revisions	By	Date

CITY OF WICHITA  
**MAIZE NORTHEAST WALL**  
 STA. 15+754.585 TO STA. 15+783.982  
 SEDGWICK COUNTY

**Professional Engineering Consultants, P.A.**  
 303 S. TOPEKA • WICHITA, KANSAS 67202  
 316-262-2691 • FAX 316-262-3003

Designed by	P.D.F.	Checked by	R.A.S.
Drawn by	W.L.L.	Date	Apr. 2002
		Job No.	97362

Drawn by: wil  
 Plotted by: drp  
 3-25-2002  
 1:1997 97 362 As-Built: /dgn/s/Vol 2/Sh 284-Maize-NEWall-5.dgn Last Rev: 8-22-07 By: gdr