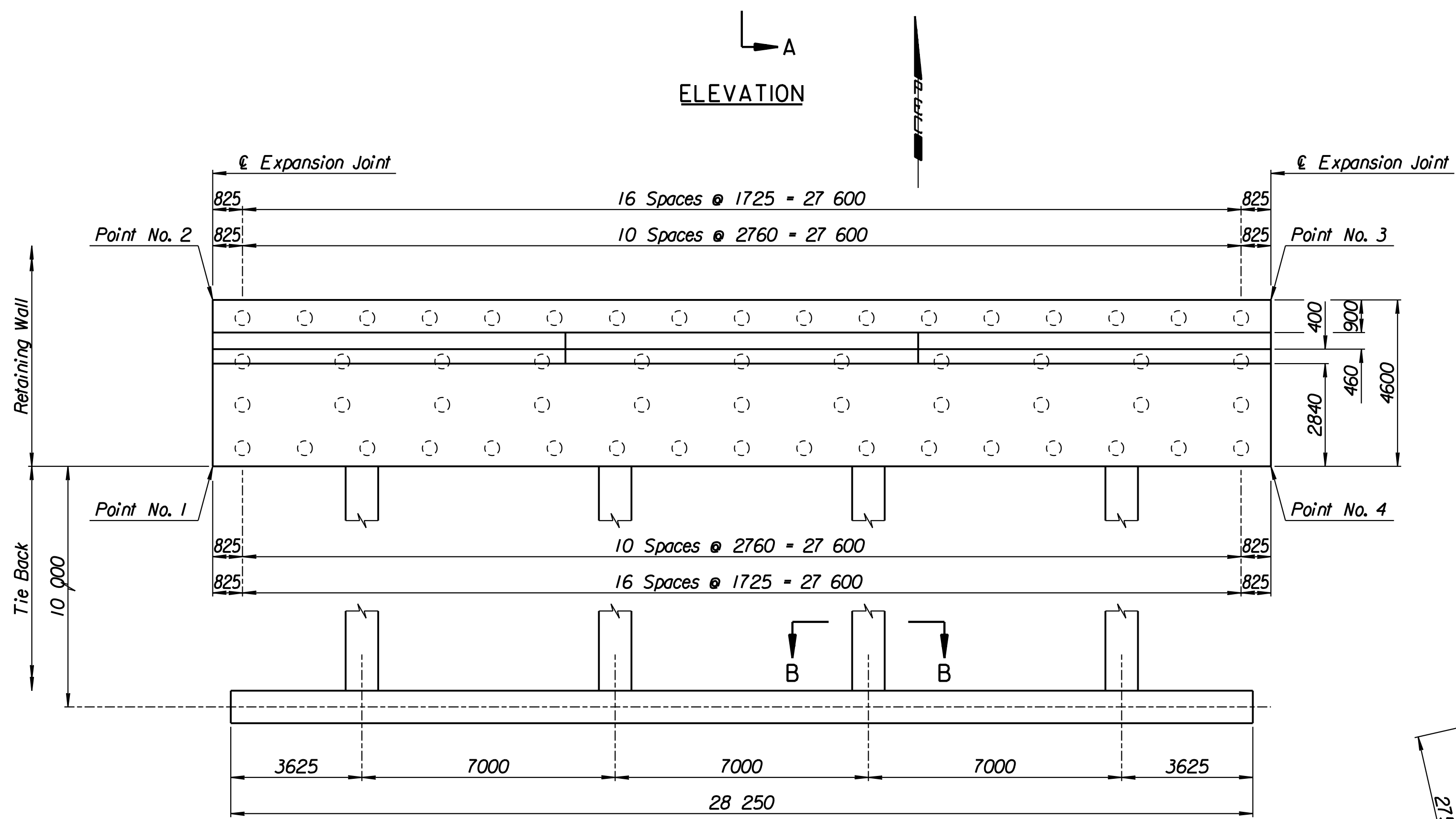
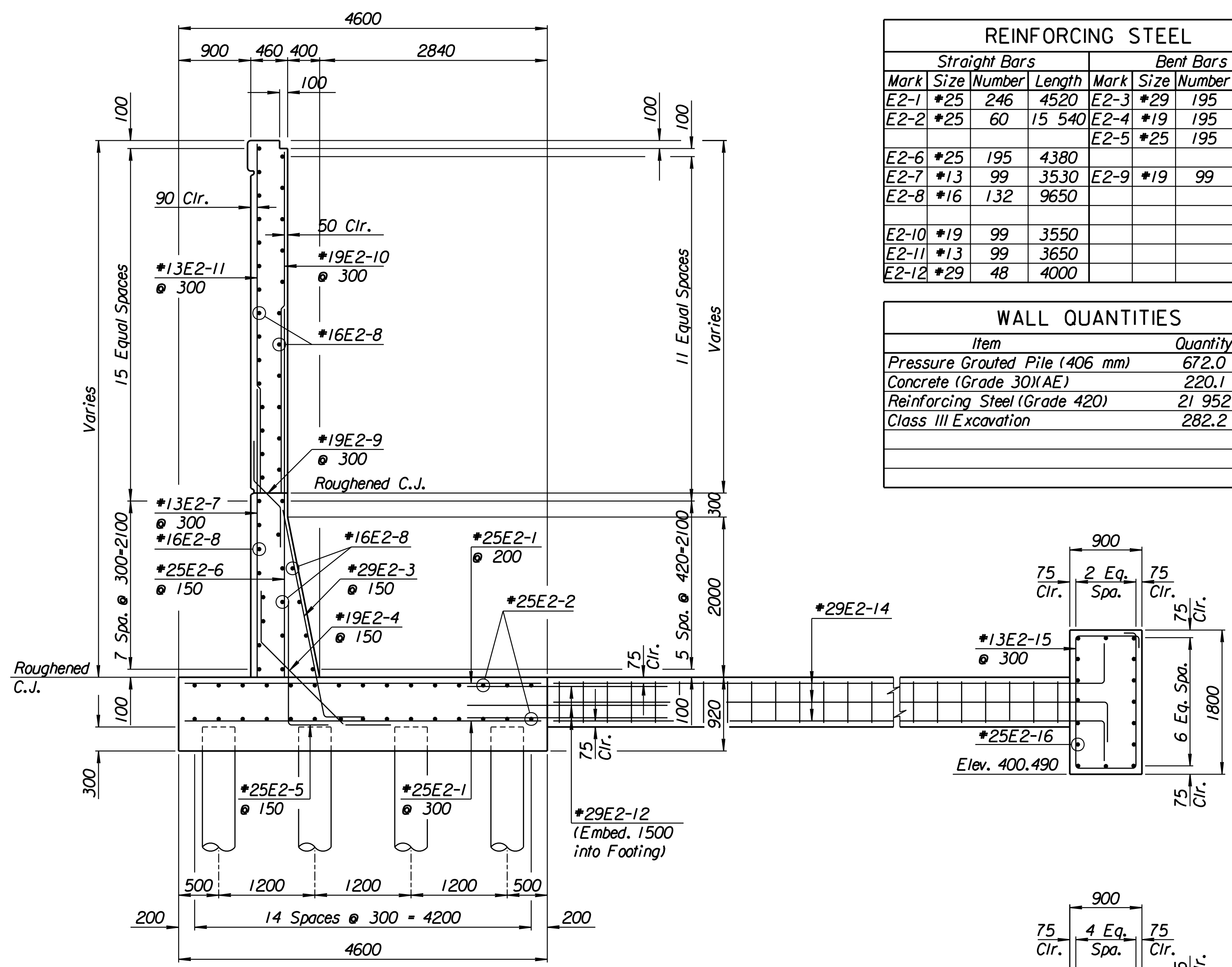
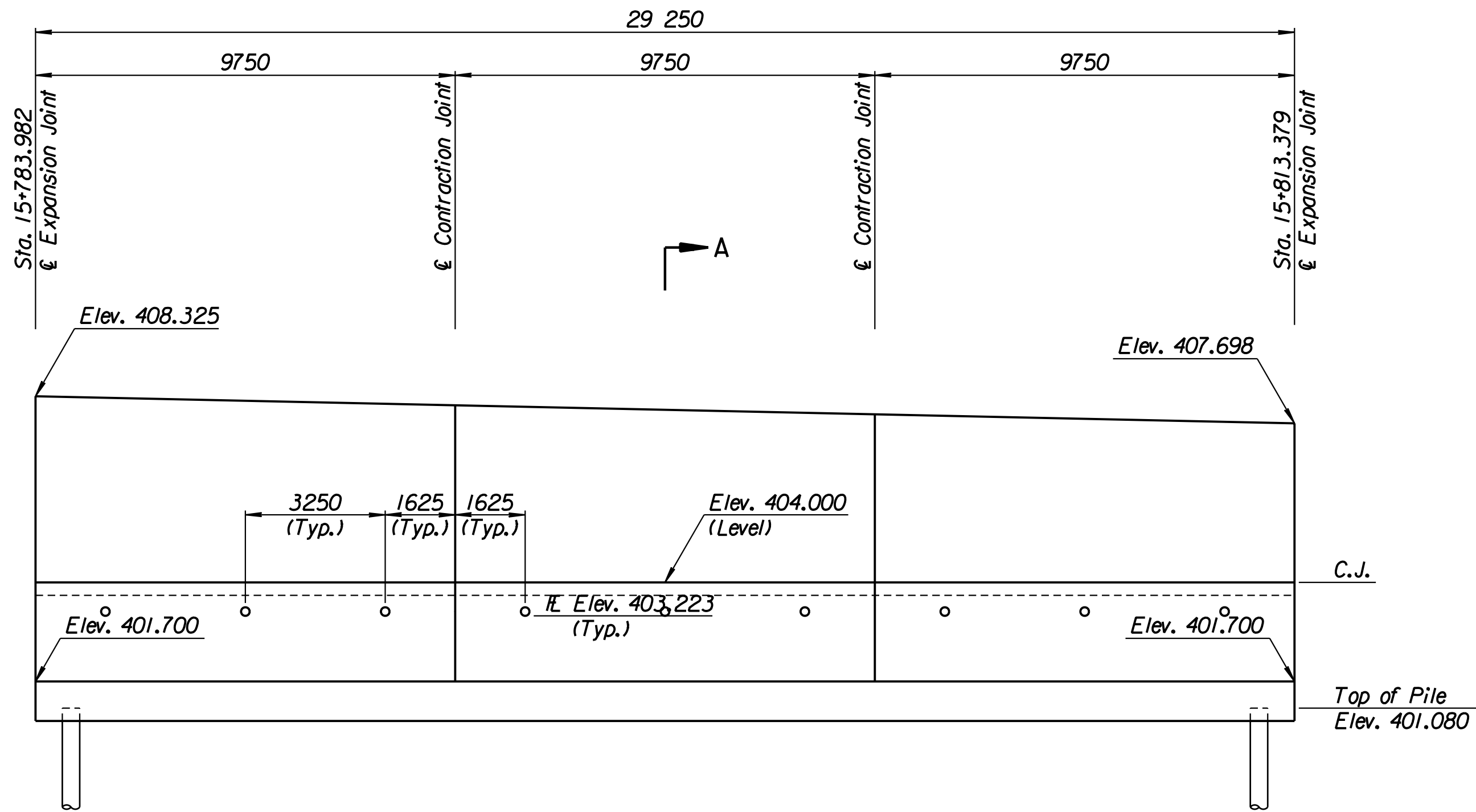


STATE	PROJECT NO.	YEAR	SHEET NO.	TOTAL SHEETS
KANSAS	54-87 K-6657-01	2002	285	1122

LAYOUT INFORMATION				
Point No.	North Coordinate	East Coordinate	Station	Offset
1	511436.416	491777.485	15+783.982	14.795 Lt.
2	511440.891	491776.418	15+783.982	19.395 Lt.
3	511447.783	491804.837	15+813.379	19.395 Lt.
4	511443.317	491805.939	15+813.379	14.795 Lt.

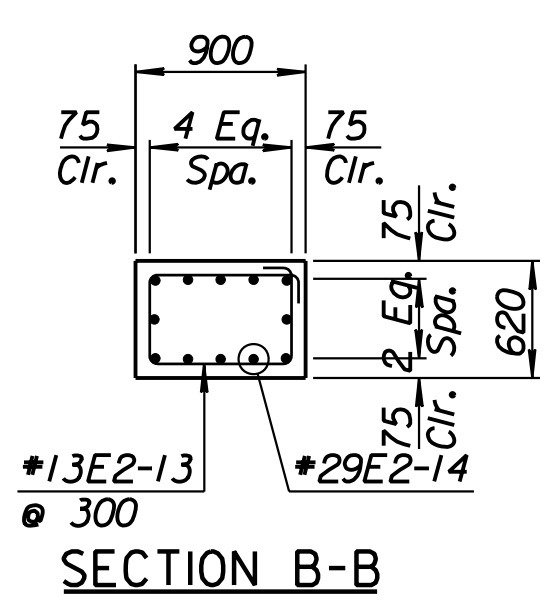
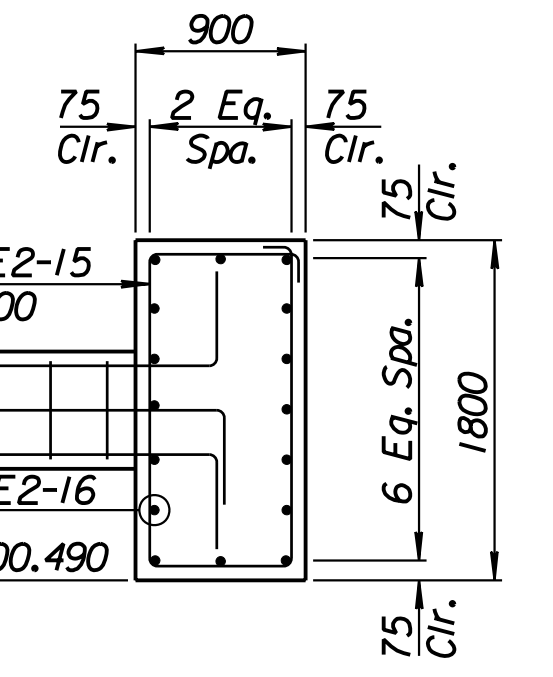
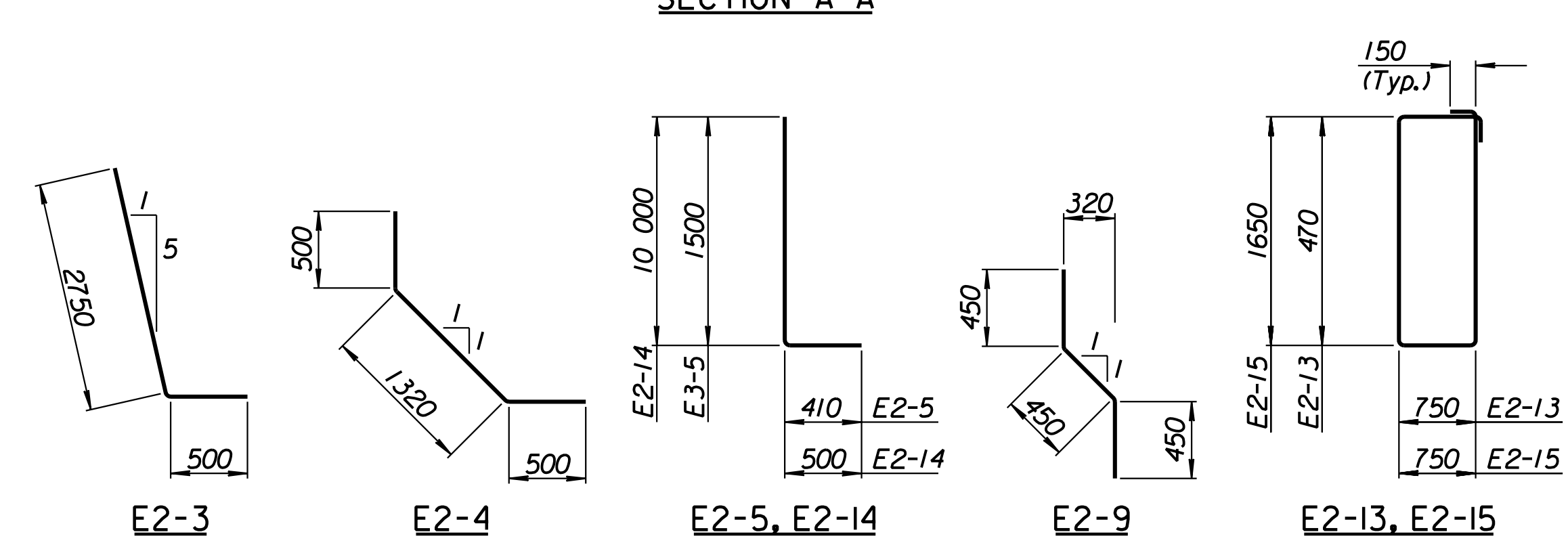
REINFORCING STEEL							
Straight Bars				Bent Bars			
Mark	Size	Number	Length	Mark	Size	Number	Length
E2-1	*25	246	4520	E2-3	*29	195	3250
E2-2	*25	60	15 540	E2-4	*19	195	2320
E2-6	*25	195	4380	E2-5	*25	195	1910
E2-7	*13	99	3530	E2-9	*19	99	1350
E2-8	*16	132	9650				
E2-10	*19	99	3550				
E2-11	*13	99	3650				
E2-12	*29	48	4000				

WALL QUANTITIES		
Item	Quantity	Unit
Pressure Grouted Pile (406 mm)	672.0	m
Concrete (Grade 30)(AE)	220.1	m <sup>3</sup>
Reinforcing Steel (Grade 420)	21 952	kg
Class III Excavation	282.2	m <sup>3</sup>



TIE BACK REINFORCING STEEL							
Straight Bars				Bent Bars			
Mark	Size	Number	Length	Mark	Size	Number	Length
E2-16	*25	32	15 040	E2-13	*13	128	2740
				E2-14	*29	48	10 500
				E2-15	*13	94	5100

TIE BACK QUANTITIES		
Item	Quantity	Unit
Concrete (Grade 30)(AE)	67.1	m <sup>3</sup>
Reinforcing Steel (Grade 420)	5288	kg



**BENDING DIAGRAMS**  
All dimensions are out to out of bars.

**RECORD DRAWING**

1			
No.	Revisions	By	Date
CITY OF WICHITA			
<b>MAIZE NORTHEAST WALL</b>			
STA. 15+783.982 TO STA. 15+813.379			
SEDGWICK COUNTY			
<b>Professional Engineering Consultants, P.A.</b> 303 S. TOPEKA • WICHITA, KANSAS 67202 316-262-2691 • FAX 316-262-3003			
Designed by	P.D.F.	Checked by	R.A.S.
Drawn by	W.L.L.	Date	Apr. 2002
		Job No.	97362

Drawn by: wil  
 Plotted by: drp  
 3-25-2002  
 I:\1997\97362\As-Builts\dgn\Vol 2\Sh 285-Maize-NE-wall-4.dgn Last Rev: 8-22-07 By: gdr