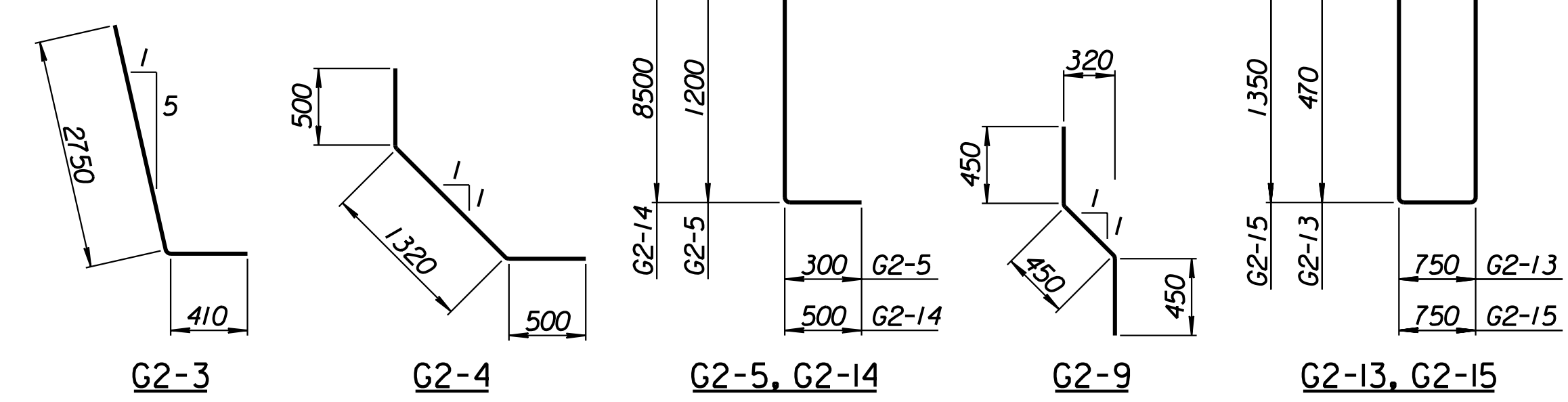
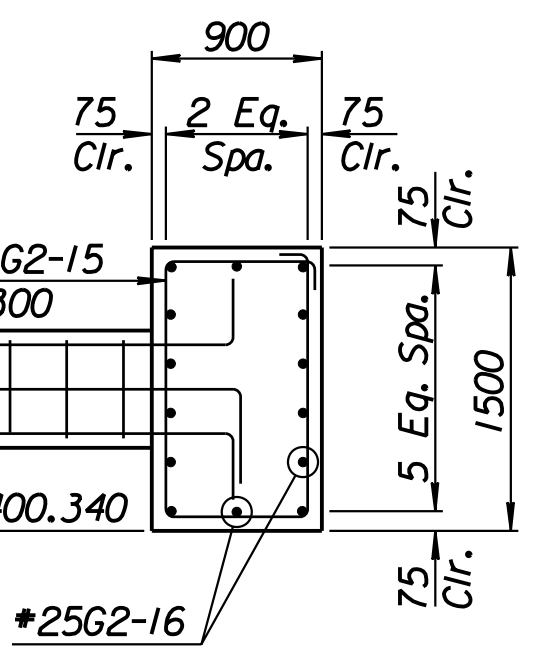
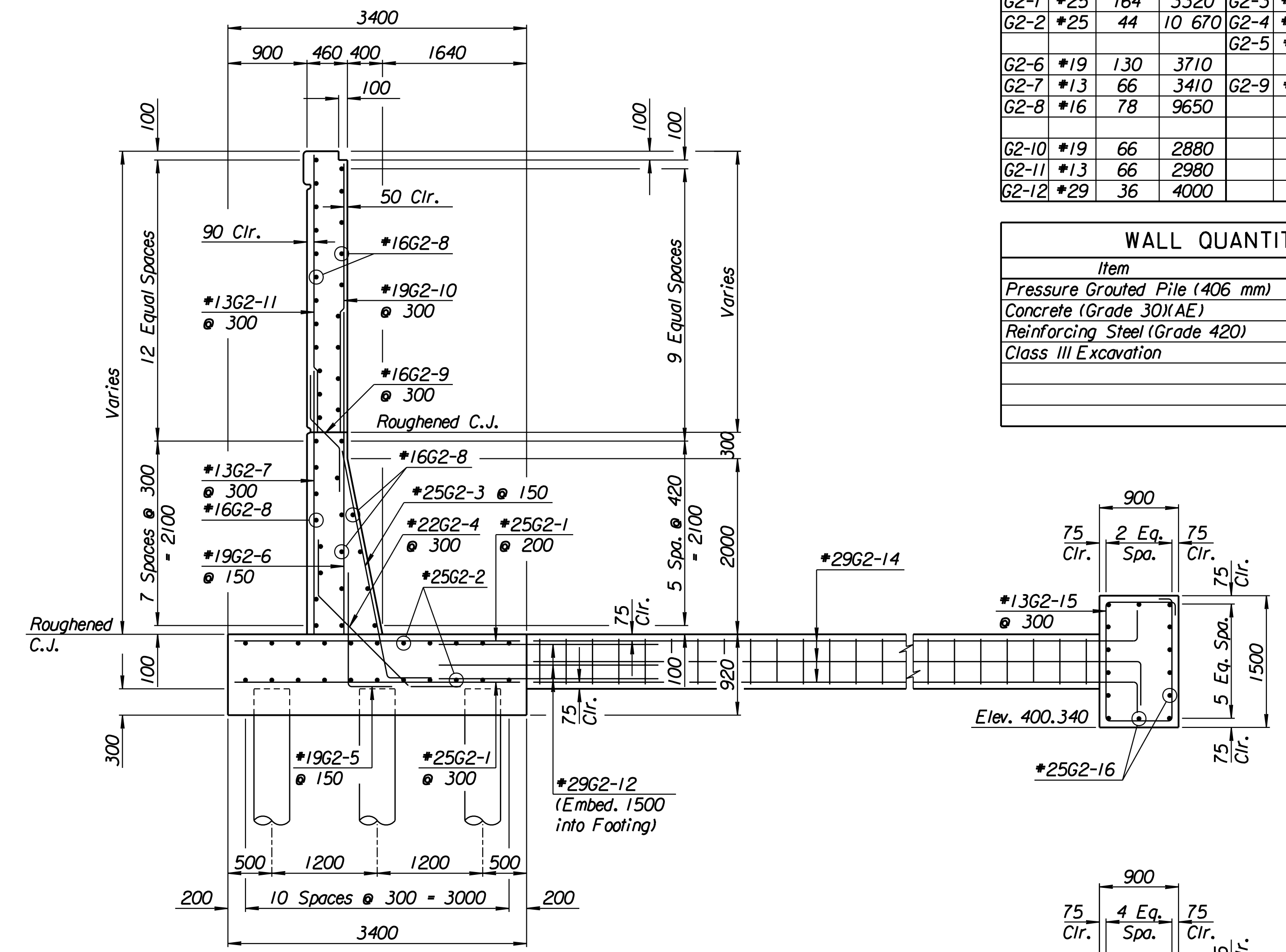
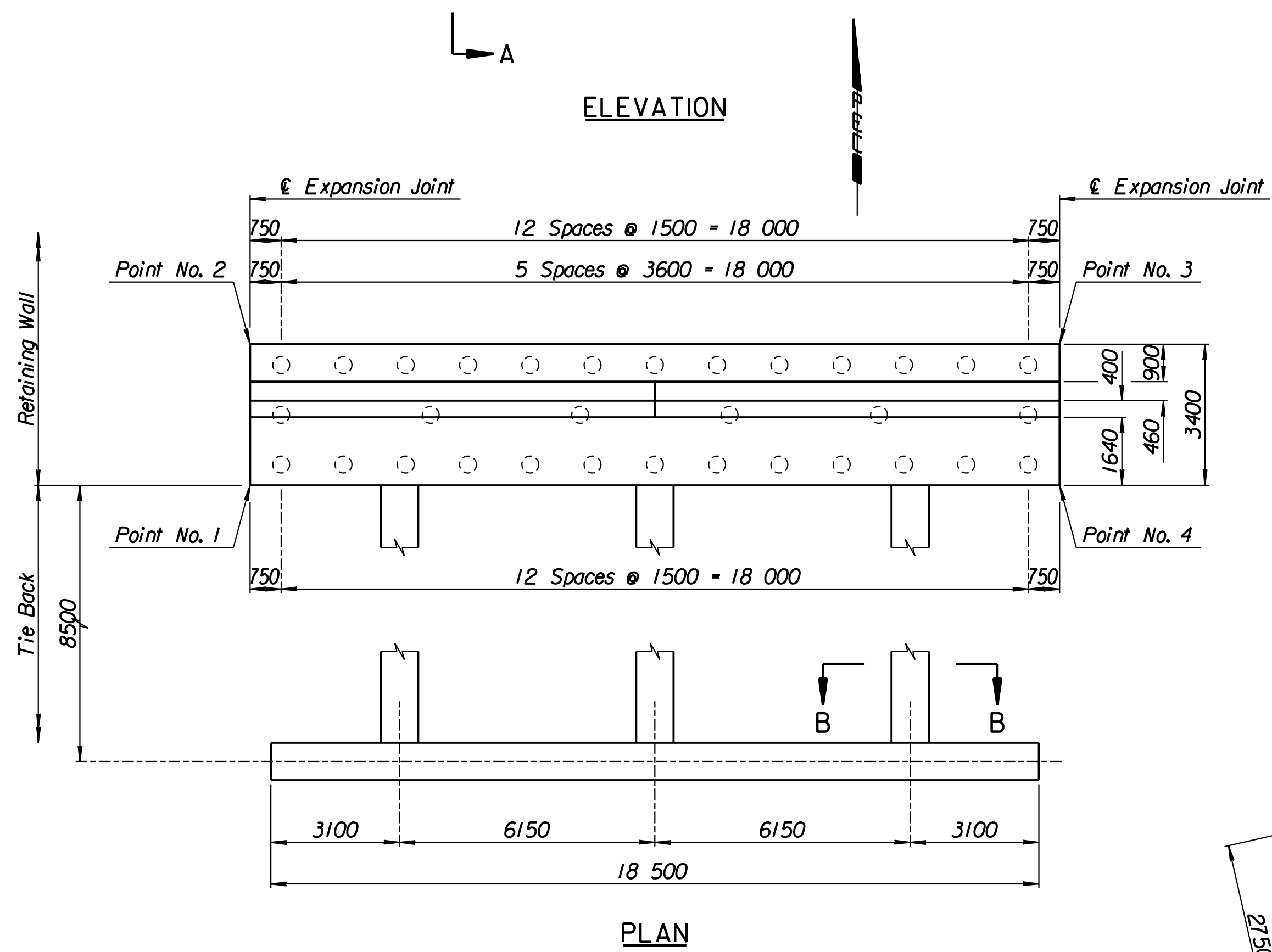
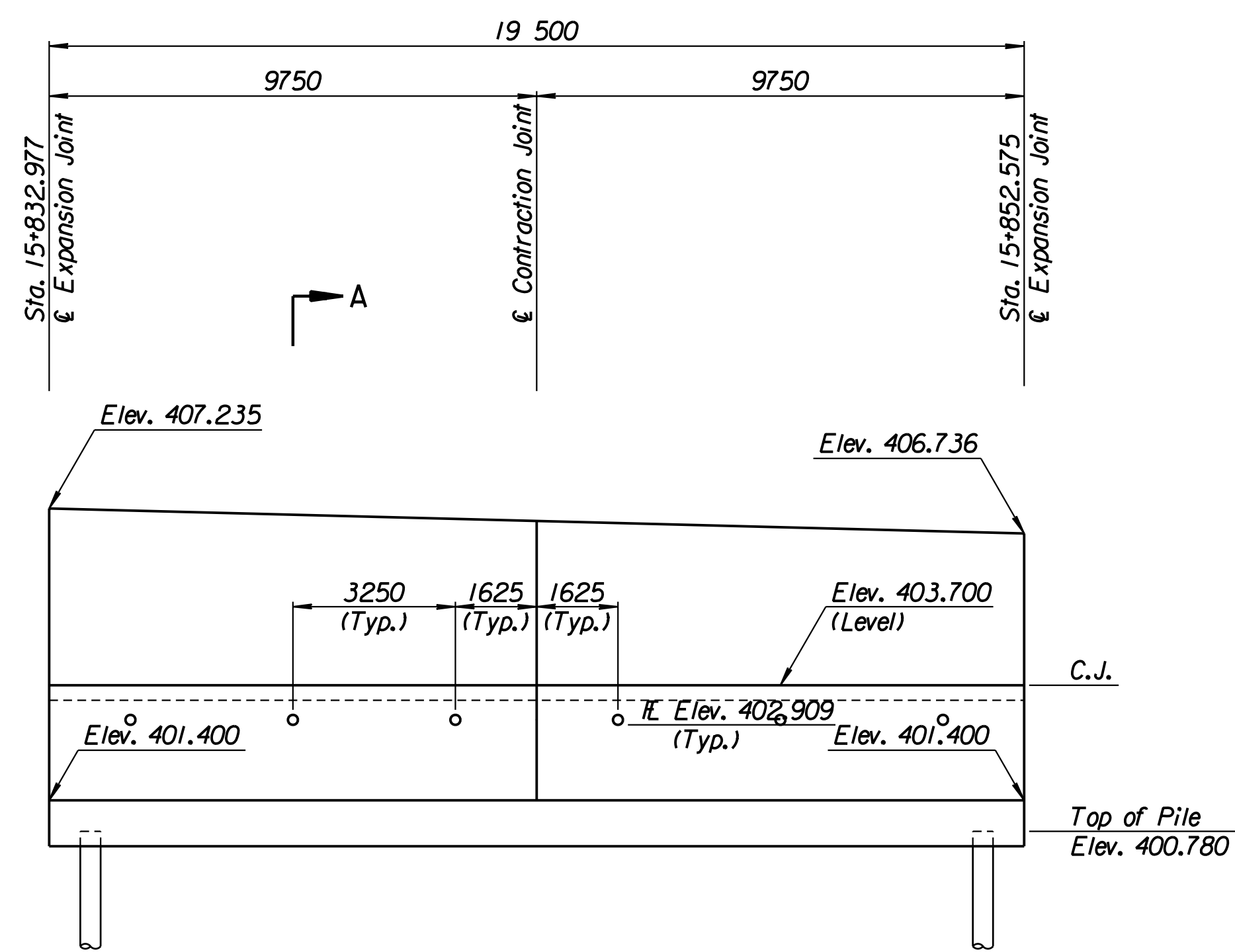


STATE	PROJECT NO.	YEAR	SHEET NO.	TOTAL SHEETS
KANSAS	54-87 K-6657-01	2002	287	1122

LAYOUT INFORMATION				
Point No.	North Coordinate	East Coordinate	Station	Offset
1	511449.207	491824.584	15+832.977	15.995 Lt.
2	511452.504	491823.752	15+832.977	19.395 Lt.
3	511457.324	491842.642	15+852.575	19.395 Lt.
4	511454.032	491843.492	15+852.575	15.995 Lt.

REINFORCING STEEL							
Straight Bars				Bent Bars			
Mark	Size	Number	Length	Mark	Size	Number	Length
G2-1	*25	164	3320	G2-3	*25	130	3160
G2-2	*25	44	10 670	G2-4	*22	66	2320
G2-6	*19	130	3710	G2-5	*19	130	1500
G2-7	*13	66	3410	G2-9	*16	66	1350
G2-8	*16	78	9650				
G2-10	*19	66	2880				
G2-11	*13	66	2980				
G2-12	*29	36	4000				

WALL QUANTITIES		
Item	Quantity	Unit
Pressure Grouted Pile (406 mm)	384.0	m
Concrete (Grade 30)(AE)	118.7	m ³
Reinforcing Steel (Grade 420)	10 519	kg
Class III Excavation	111.7	m ³



TIE BACK REINFORCING STEEL							
Straight Bars			Bent Bars				
Mark	Size	Number	Length	Mark	Size	Number	Length
G2-16	*25	28	10 170	G2-13	*13	81	2740
				G2-14	*29	36	9000
				G2-15	*13	63	4500

TIE BACK QUANTITIES		
Item	Quantity	Unit
Concrete (Grade 30)(AE)	38.5	m ³
Reinforcing Steel (Grade 420)	3273	kg

Drawn by: wil 3-25-2002
 Plotted by: drp 1-1997 97362 As-Built/dgn/s/Vol 2/Sh 287-Maize-NEWall-2.dgn Last Rev: 8-22-07 By: gdr

1			
No.	Revisions	By	Date
CITY OF WICHITA			
MAIZE NORTHEAST WALL			
STA. 15+832.977 TO STA. 15+852.575			
SEDGWICK COUNTY			
Professional Engineering Consultants, P.A. 303 S. TOPEKA • WICHITA, KANSAS 67202 316-262-2691 • FAX 316-262-3003			
Designed by	P.D.F.	Checked by	R.A.S.
Drawn by	W.L.L.	Date	Apr. 2002
		Job No.	97362

RECORD DRAWING