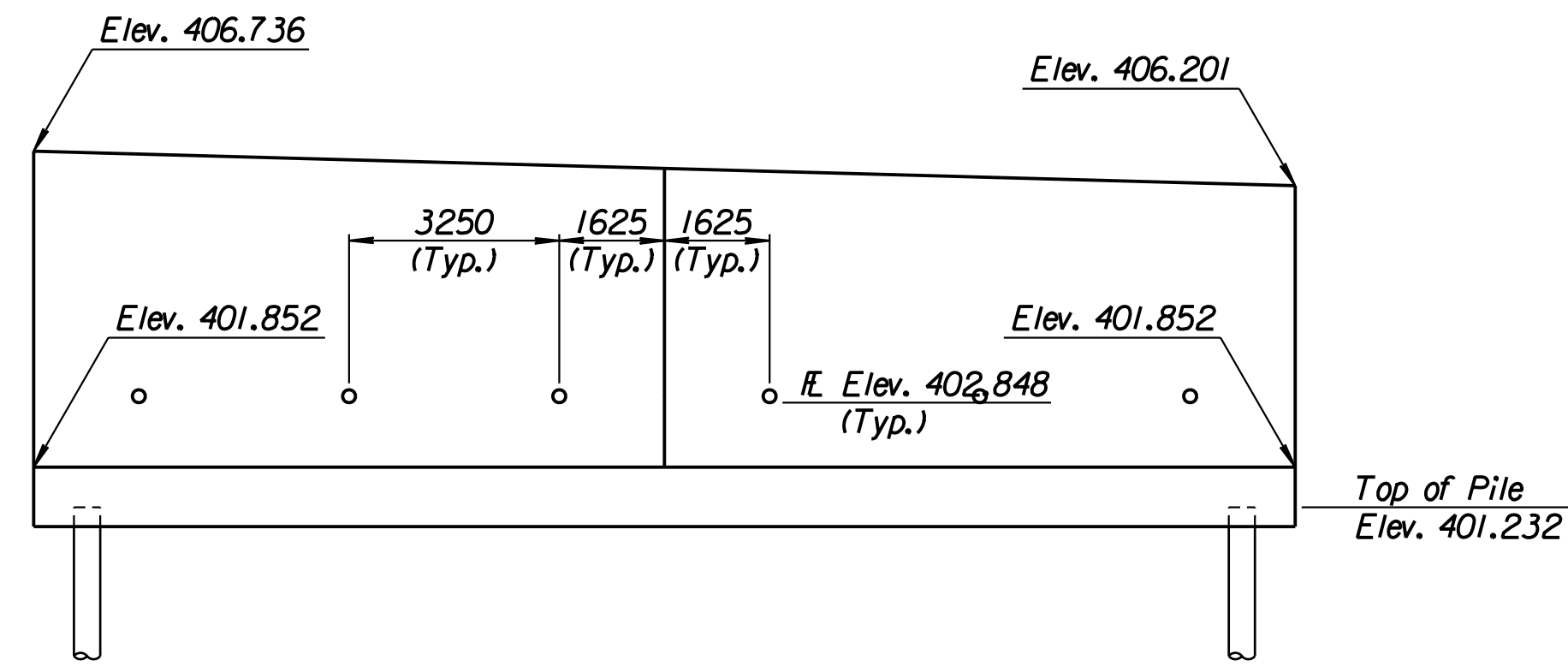
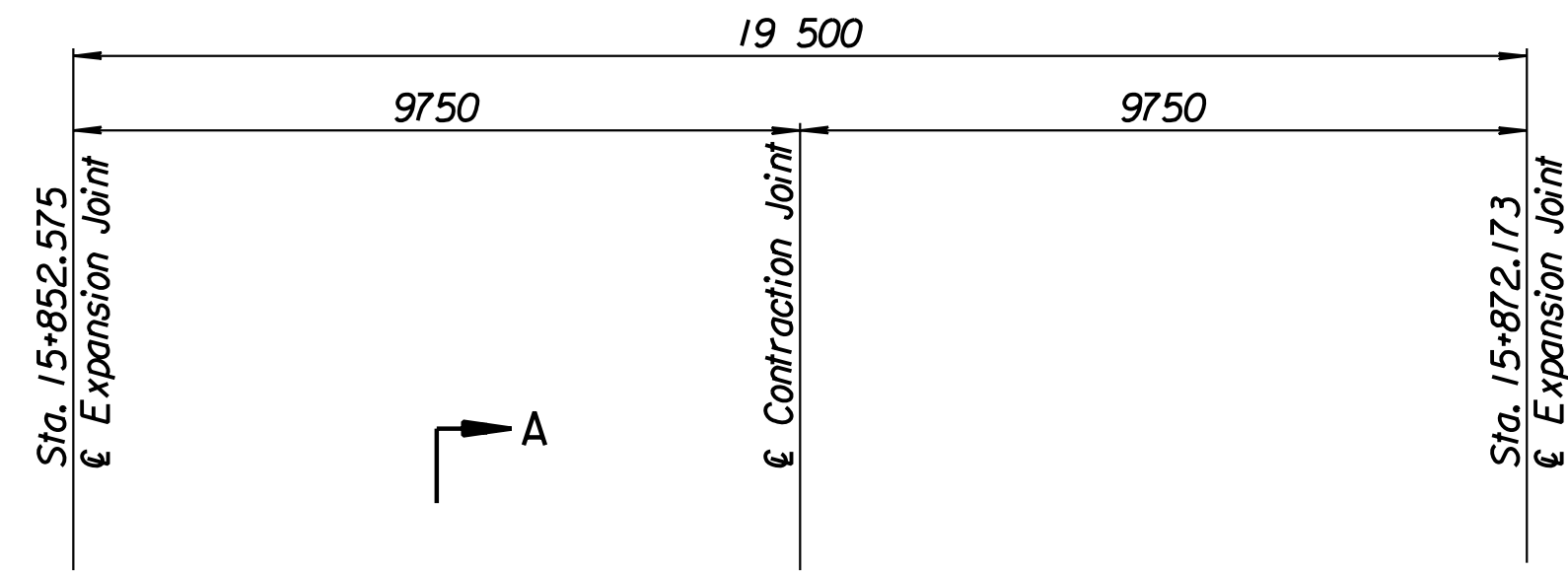


STATE	PROJECT NO.	YEAR	SHEET NO.	TOTAL SHEETS
KANSAS	54-87 K-6657-01	2002	288	1122

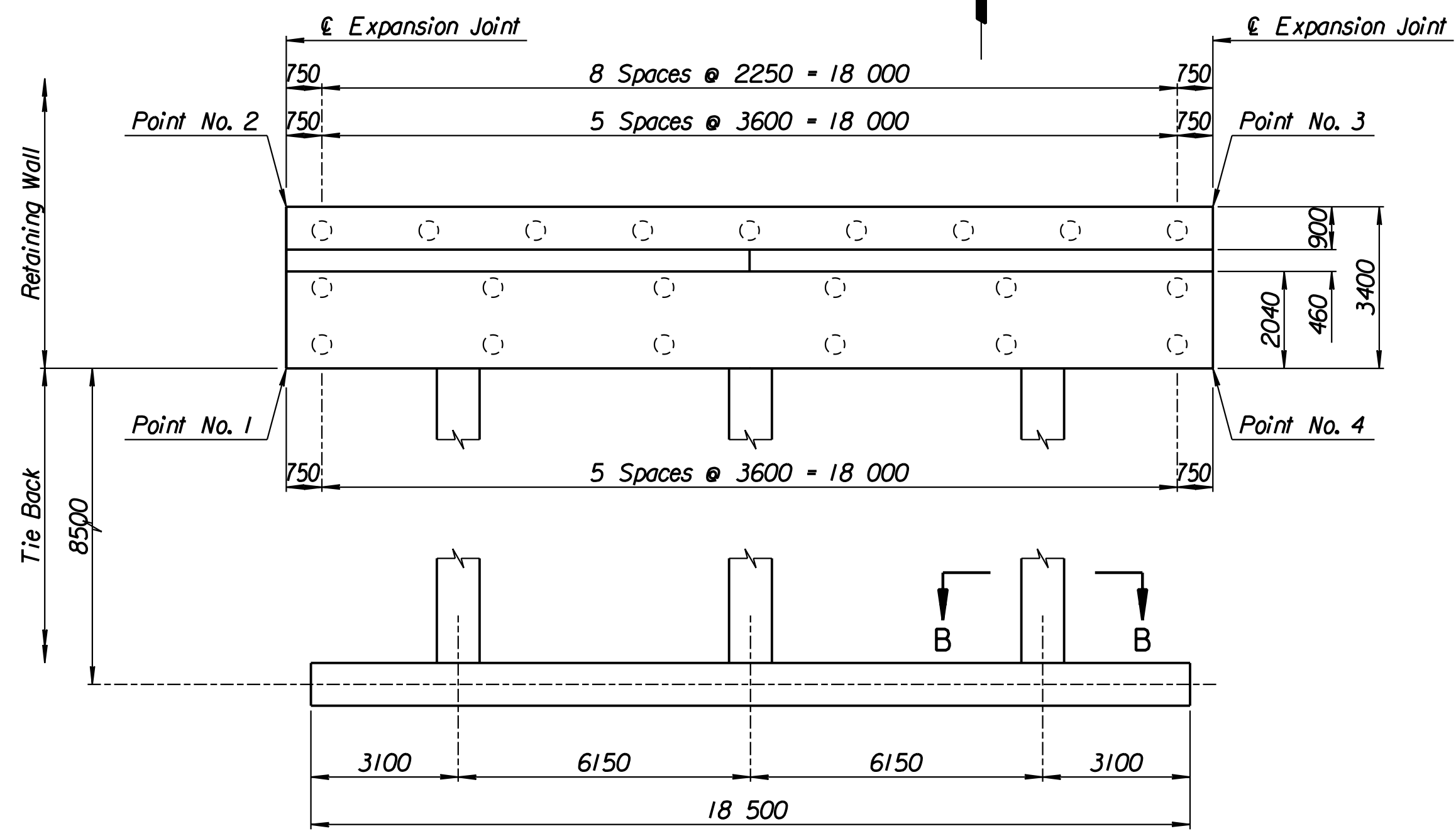
LAYOUT INFORMATION				
Point No.	North Coordinate	East Coordinate	Station	Offset
1	511454.032	491843.492	15+852.575	15.995 Lt.
2	511457.324	491842.642	15+852.575	19.395 Lt.
3	511462.245	491861.506	15+872.173	19.395 Lt.
4	511458.957	491862.373	15+872.173	15.995 Lt.

REINFORCING STEEL							
Straight Bars				Bent Bars			
Mark	Size	Number	Length	Mark	Size	Number	Length
H2-1	*25	164	3320	H2-3	*29	130	3430
H2-2	*25	44	10 670	H2-4	*19	66	1970
H2-5	*16	60	9650				
H2-6	*19	66	4190				
H2-7	*13	66	4830				
H2-8	*29	36	4000				

WALL QUANTITIES		
Item	Quantity	Unit
Pressure Grouted Pile (406 mm)	252.0	m
Concrete (Grade 30(AE))	102.2	m ³
Reinforcing Steel (Grade 420)	9137	kg
Class III Excavation	27.4	m ³



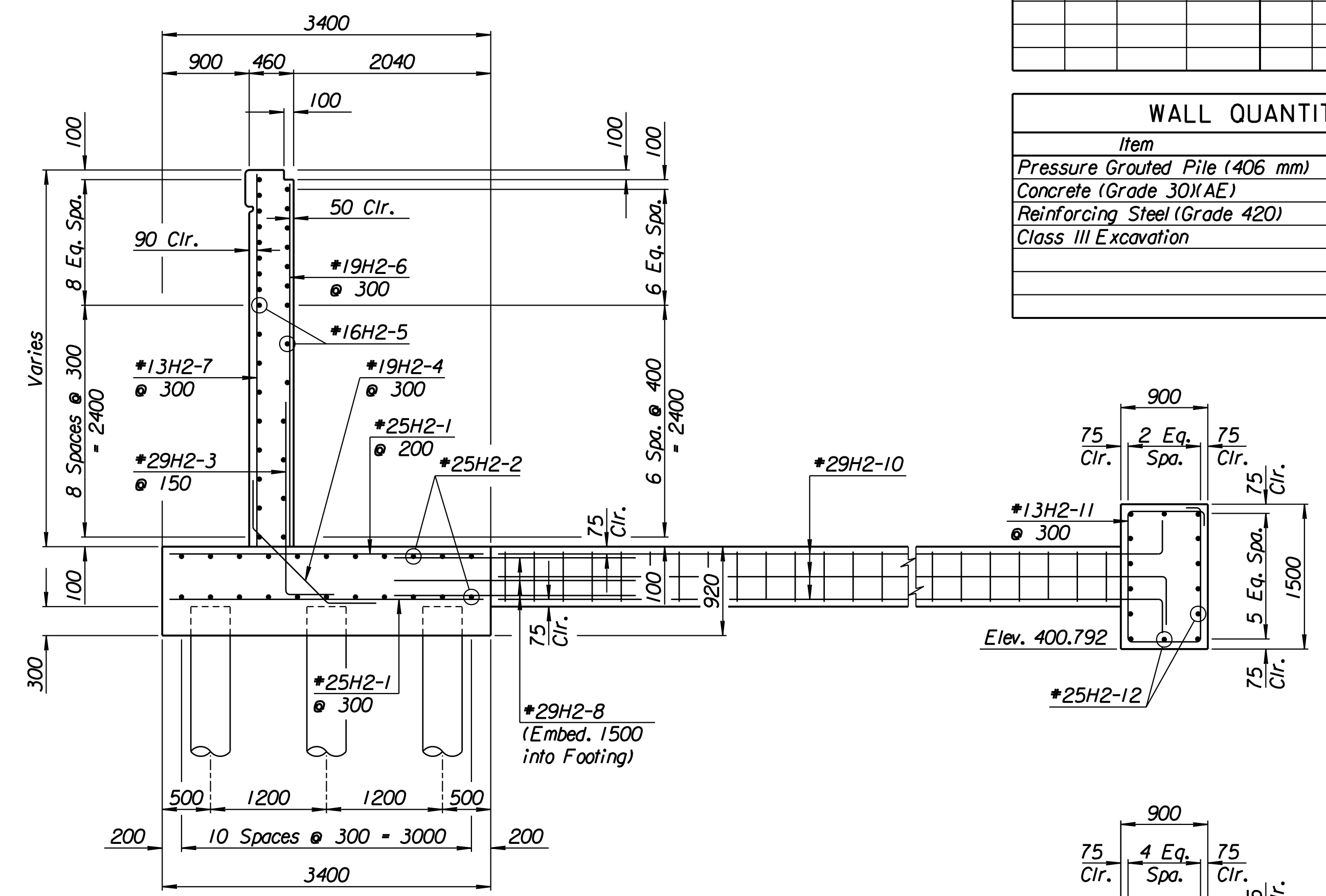
ELEVATION



PLAN

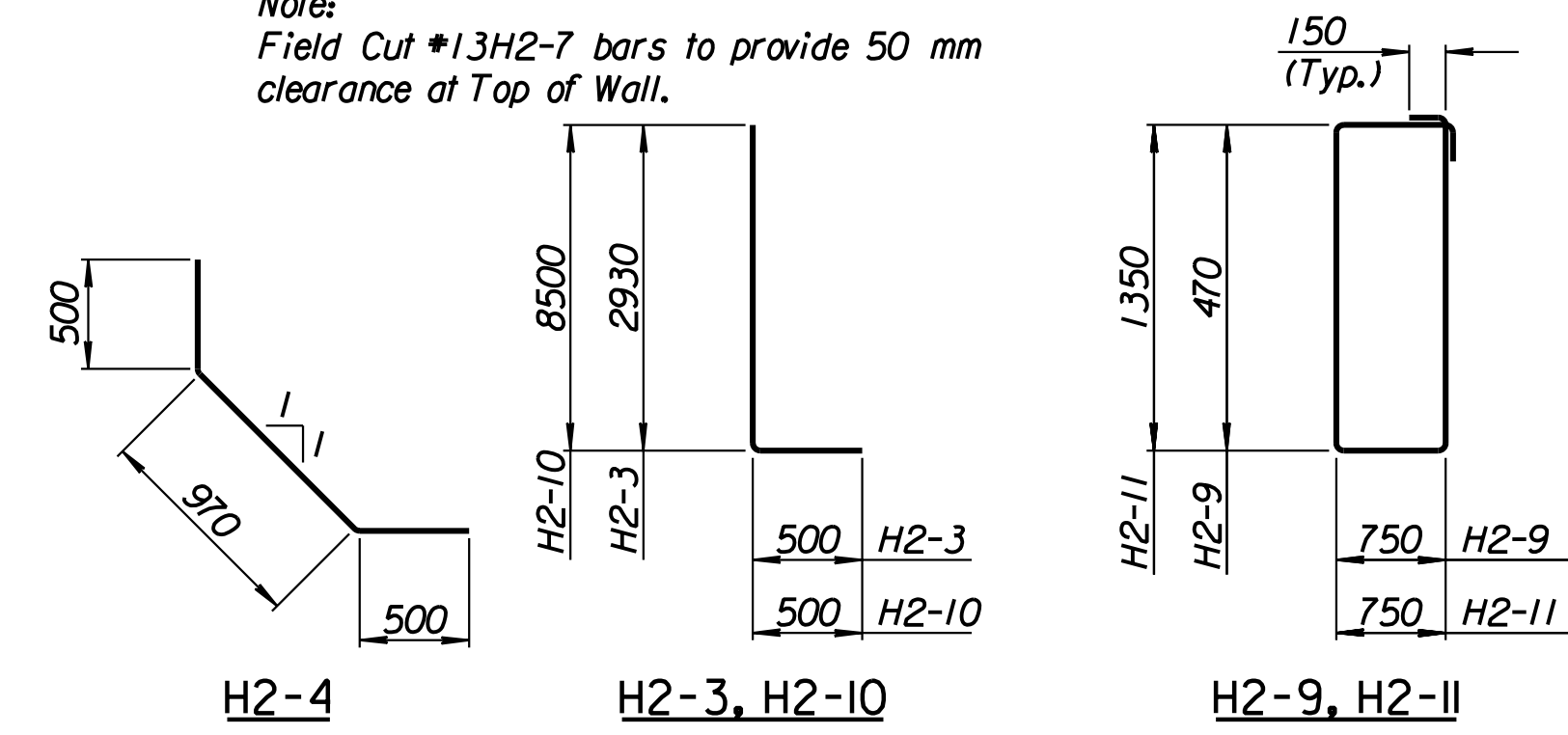
TIE BACK REINFORCING STEEL							
Straight Bars			Bent Bars				
Mark	Size	Number	Length	Mark	Size	Number	Length
H2-12	*25	28	10 170	H2-9	*13	81	2740
				H2-10	*29	36	9000
				H2-11	*13	63	4500

TIE BACK QUANTITIES		
Item	Quantity	Unit
Concrete (Grade 30(AE))	38.5	m ³
Reinforcing Steel (Grade 420)	3273	kg



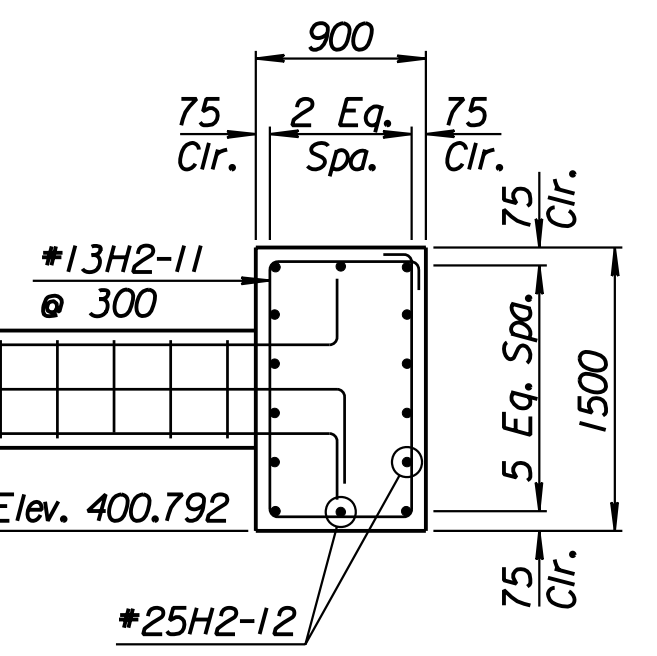
SECTION A-A

Note:
Field Cut #13H2-7 bars to provide 50 mm clearance at Top of Wall.



BENDING DIAGRAMS

All dimensions are out to out of bars.



SECTION B-B

1			
No.	Revisions	By	Date
CITY OF WICHITA			
MAIZE NORTHEAST WALL			
STA. 15+852.575 TO STA. 15+872.173			
SEDGWICK COUNTY			
Professional Engineering Consultants, P.A. 303 S. TOPEKA • WICHITA, KANSAS 67202 316-262-2691 • FAX 316-262-3003			
Designed by	P.D.F.	Checked by	R.A.S.
Drawn by	W.L.L.	Date	Apr. 2002
		Job No.	97362

RECORD DRAWING

Drawn by: wil
 Plotted by: drp
 3-25-2002
 1:1997/97362/As-Built/s/dgn/s/Vol 2/Sh 288-Maize-NE-wall-1.dgn Last Rev: 8-22-07 By: gdr