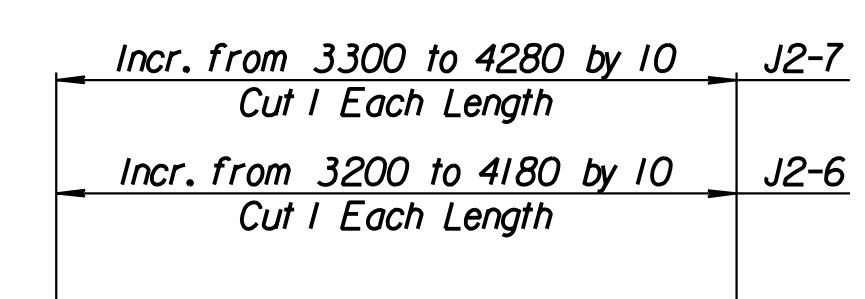
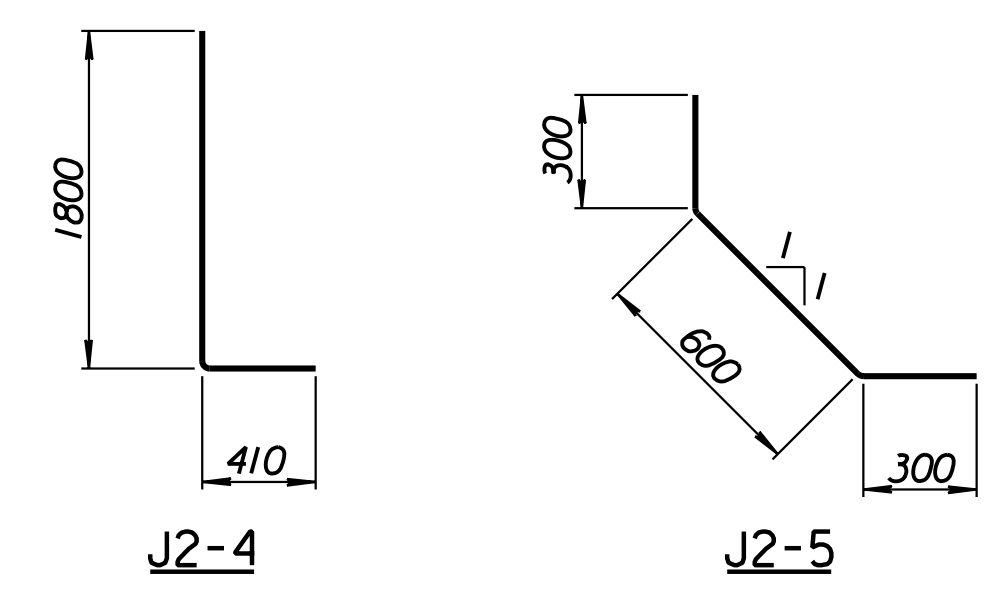


STATE	PROJECT NO.	YEAR	SHEET NO.	TOTAL SHEETS
KANSAS	54-87 K-6657-01	2002	289	1122

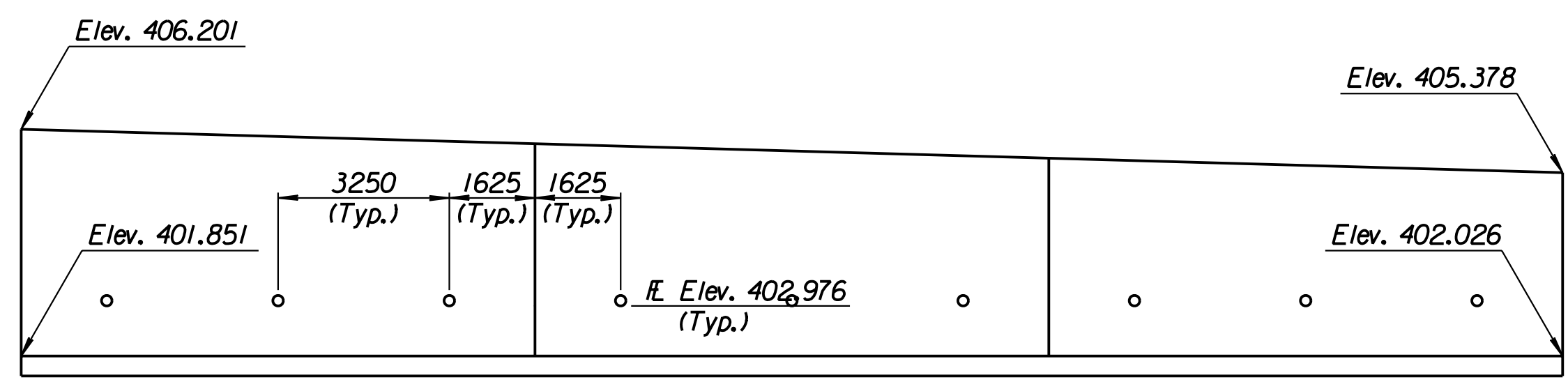
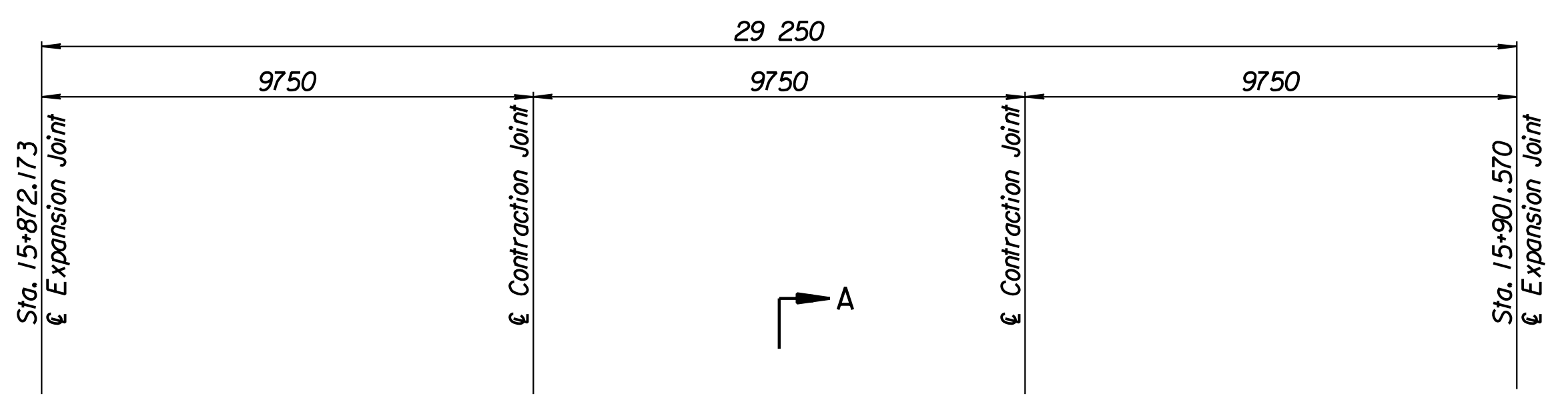
LAYOUT INFORMATION				
Point No.	North Coordinate	East Coordinate	Station	Offset
1	511457.797	491862.679	15+872.173	14.795 Lt.
2	511462.245	491861.506	15+872.173	19.395 Lt.
3	511469.812	491889.753	15+901.570	19.395 Lt.
4	511465.374	491890.961	15+901.570	14.795 Lt.

REINFORCING STEEL							
Straight Bars				Bent Bars			
Mark	Size	Number	Length	Mark	Size	Number	Length
J2-1	*16	99	4520	J2-4	*25	195	2210
J2-2	*22	195	4520	J2-5	*16	99	1200
J2-3	*13	60	14 960				
J2-6	*16	99	Varies				
J2-7	*13	99	Varies				
J2-8	*13	75	9650				

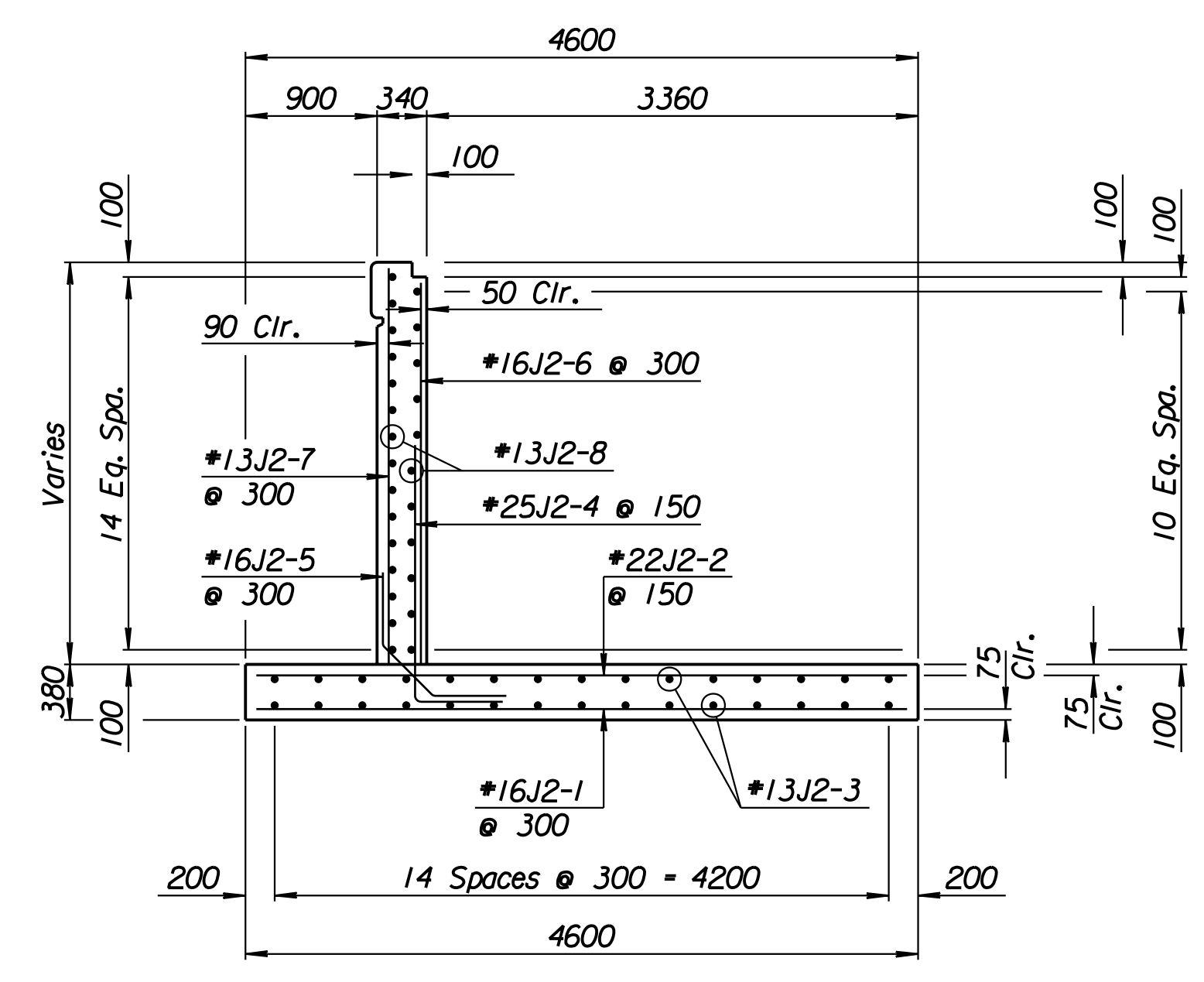
WALL QUANTITIES		
Item	Quantity	Unit
Concrete (Grade 30)(AE)	88.3	m ³
Reinforcing Steel (Grade 420)	7824	kg
Class III Excavation	0.0	m ³



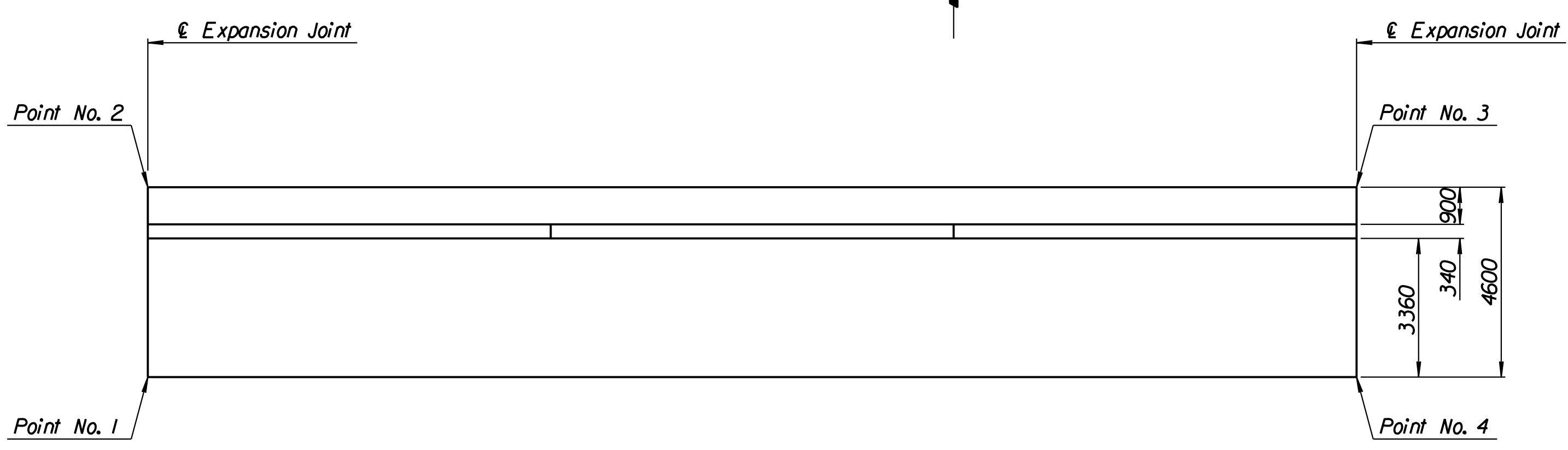
BENDING DIAGRAMS
All dimensions are out to out of bars.



ELEVATION



SECTION A-A



PLAN

Drawn by: wil
 Plotted by: drp
 3-25-2002
 I:/1997/97362/As-Built/dgn/s/Vol 2/Sh 289-Maize-NE-wall-9.dgn Last Rev: 8-22-07 By: gdr

RECORD DRAWING

1			
No.	Revisions	By	Date
CITY OF WICHITA			
MAIZE NORTHEAST WALL			
STA. 15+872.173 TO STA. 15+901.570			
SEDGWICK COUNTY			
Professional Engineering Consultants, P.A.			
303 S. TOPEKA • WICHITA, KANSAS 67202			
316-262-2691 • FAX 316-262-3003			
Designed by	P.D.F.	Checked by	R.A.S.
Drawn by	W.L.L.	Date	Apr. 2002
		Job No.	97362