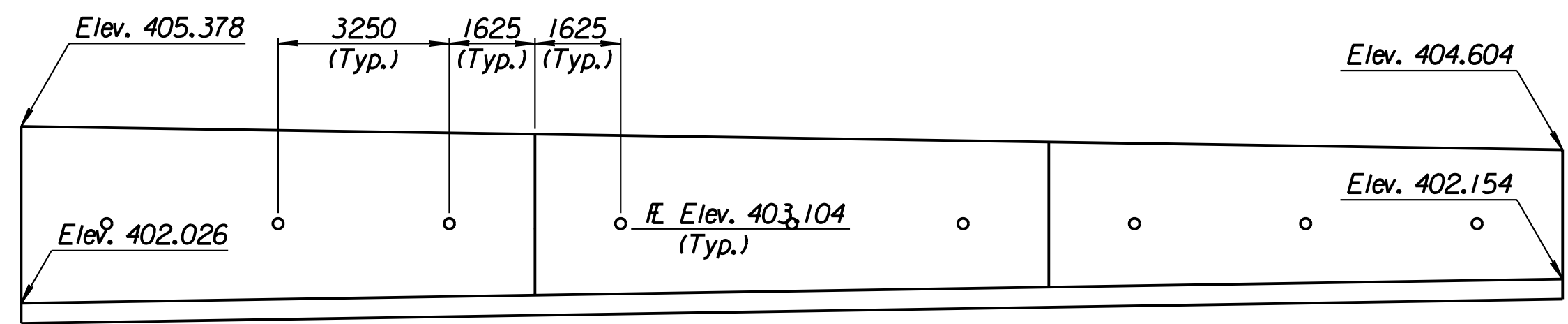
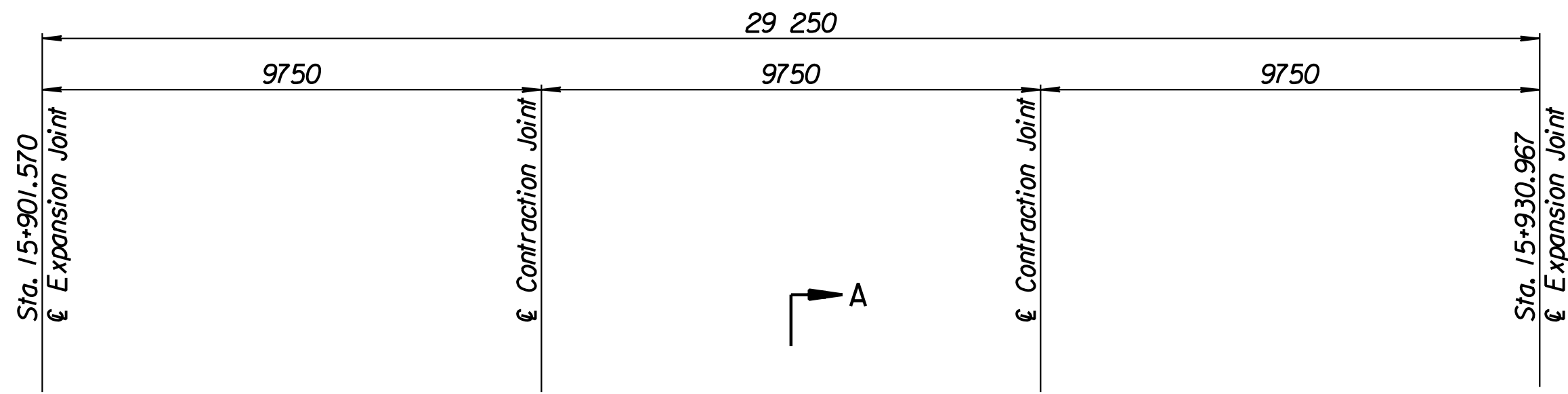


STATE	PROJECT NO.	YEAR	SHEET NO.	TOTAL SHEETS
KANSAS	54-87 K-6657-01	2002	290	1122

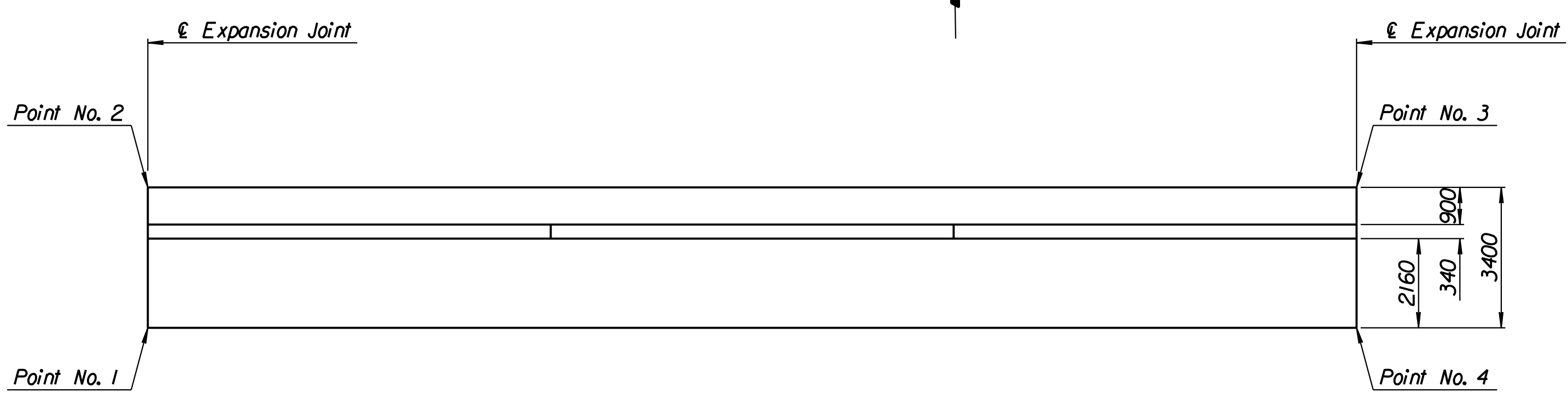
LAYOUT INFORMATION				
Point No.	North Coordinate	East Coordinate	Station	Offset
1	511466.532	491890.646	15+901.570	15.995 Lt.
2	511469.812	491889.753	15+901.570	19.395 Lt.
3	511477.605	491917.939	15+930.967	19.395 Lt.
4	511474.331	491918.858	15+930.967	15.995 Lt.

REINFORCING STEEL							
Straight Bars				Bent Bars			
Mark	Size	Number	Length	Mark	Size	Number	Length
K2-1	*16	294	3320	K2-3	*19	195	1520
K2-2	*13	44	14 960	K2-4	*13	99	1200
K2-5	*16	99	Varies				
K2-6	*13	99	Varies				
K2-7	*13	60	9650				

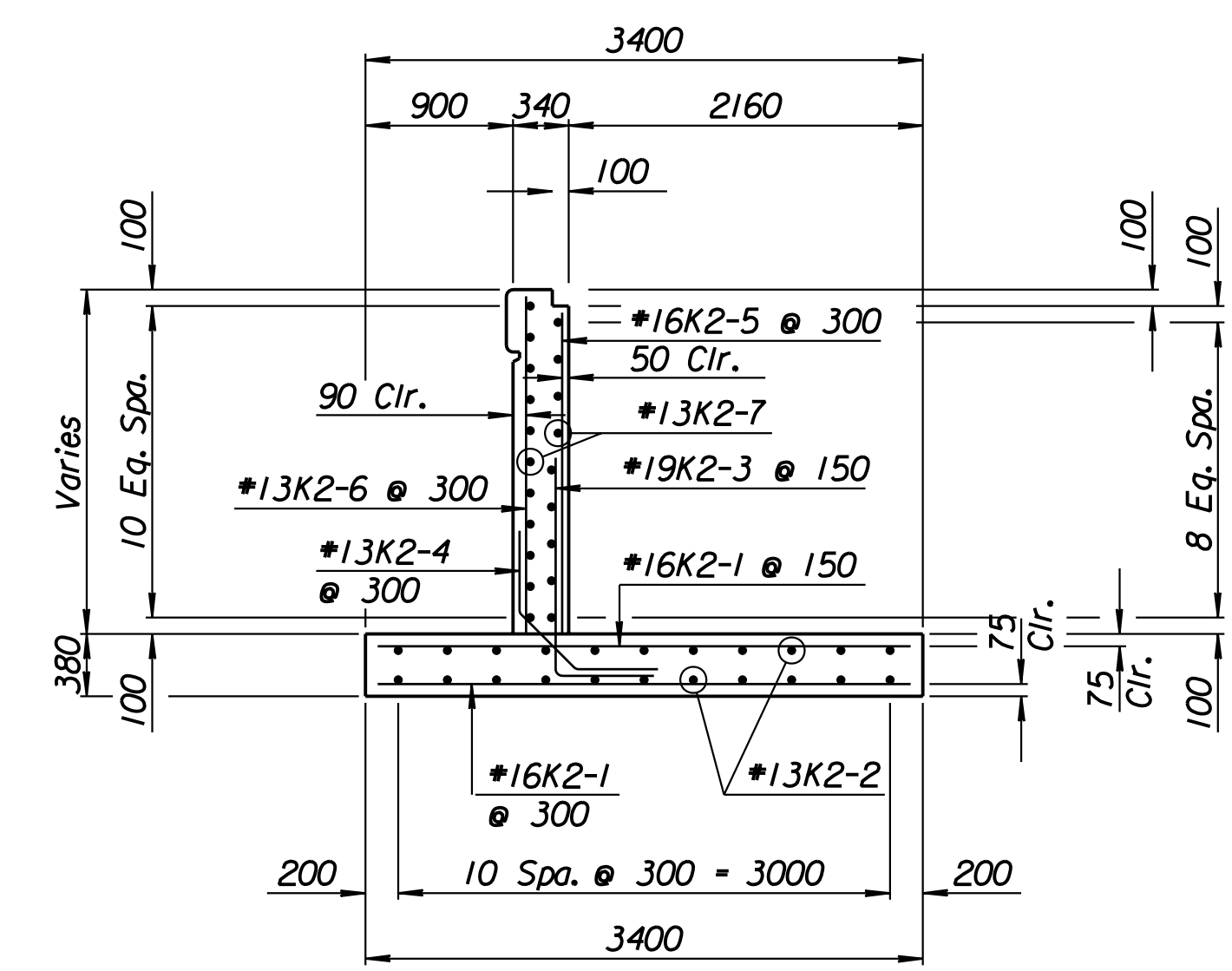
WALL QUANTITIES		
Item	Quantity	Unit
Concrete (Grade 30)(AE)	66.3	m ³
Reinforcing Steel (Grade 420)	4226	kg
Class III Excavation	0.0	m ³



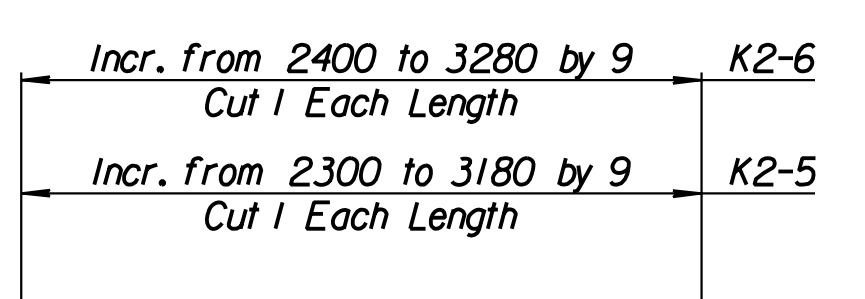
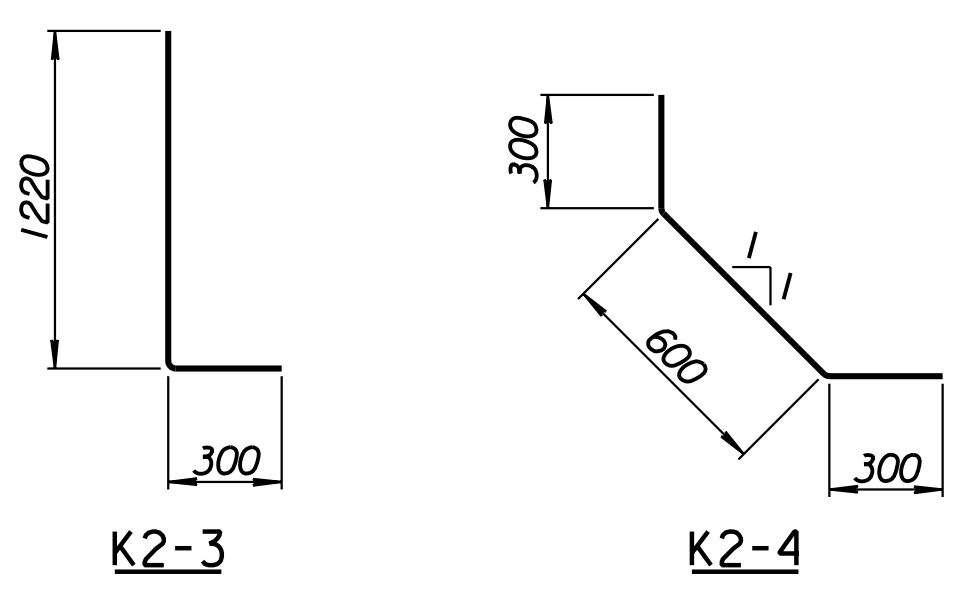
ELEVATION



PLAN



SECTION A-A



BENDING DIAGRAMS
All dimensions are out to out of bars.

Drawn by: wil
 Plotted by: drp
 3-25-2002
 I:/1997/97362/As-Built/dgn/s/Vol 2/Sh 290-Maize-NE-wall-10.dgn Last Rev: 8-22-07 By: gdr

1			
No.	Revisions	By	Date
CITY OF WICHITA			
MAIZE NORTHEAST WALL			
STA. 15+901.570 TO STA. 15+930.967			
SEDGWICK COUNTY			
Professional Engineering Consultants, P.A. <small>303 S. TOPEKA • WICHITA, KANSAS 67202 316-262-2691 • FAX 316-262-3003</small>			
Designed by	P.D.F.	Checked by	R.A.S.
Drawn by	W.L.L.	Date	Apr. 2002 Job No. 97362

RECORD DRAWING