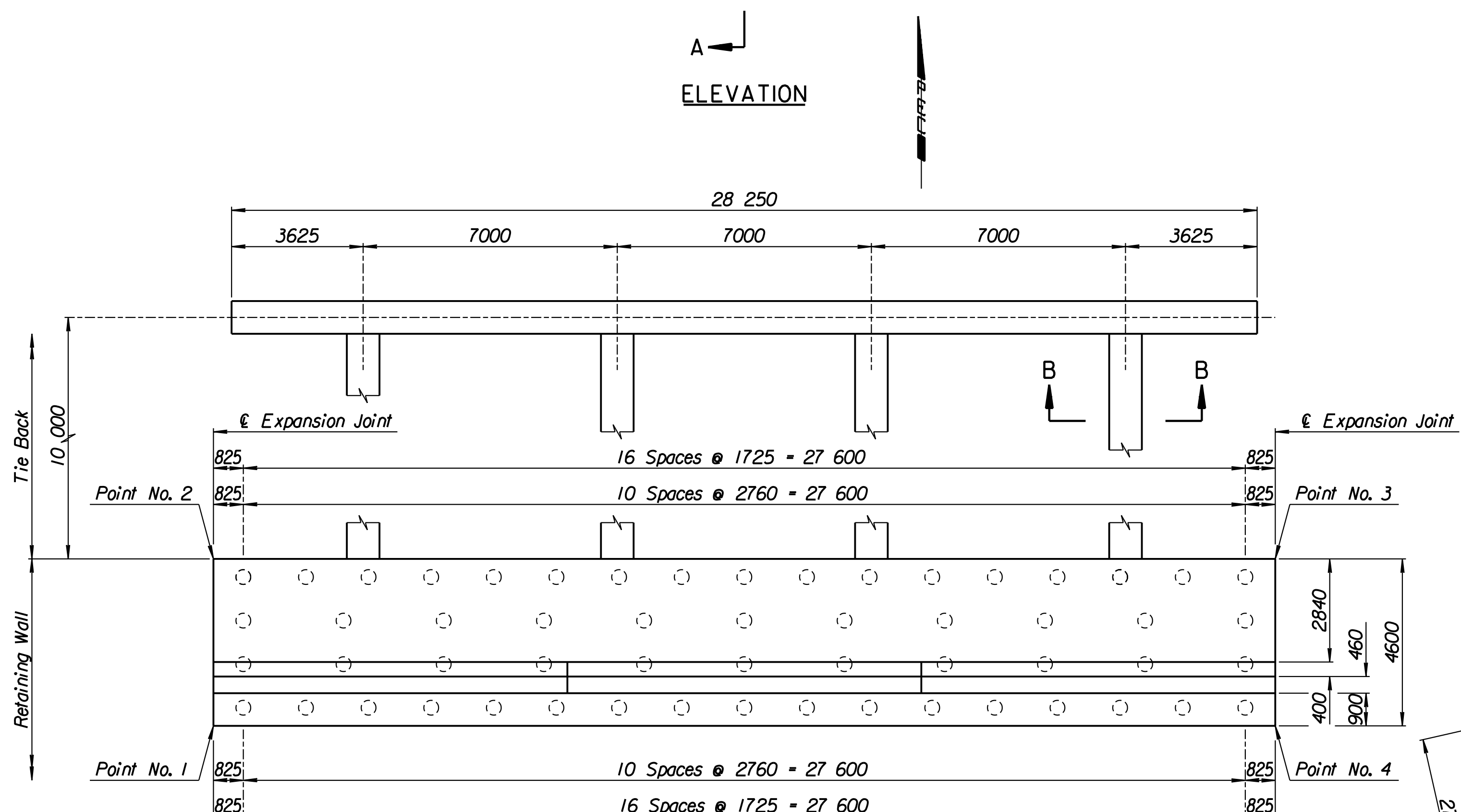
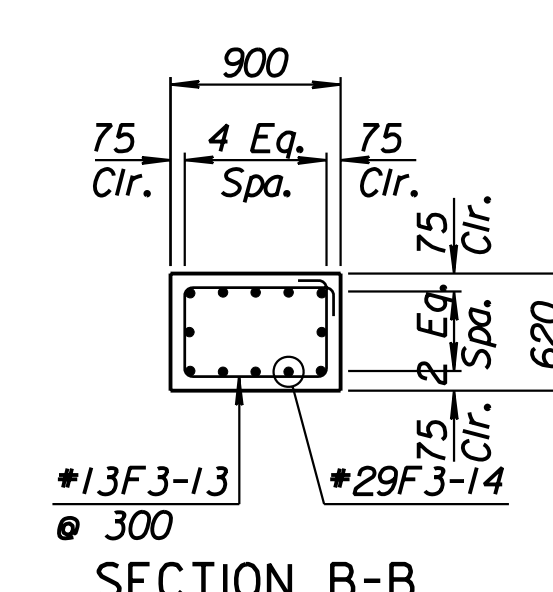
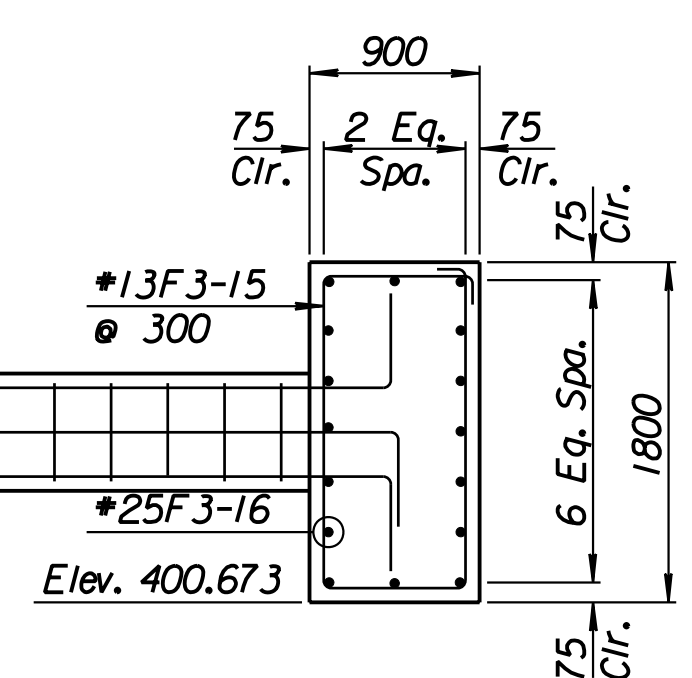
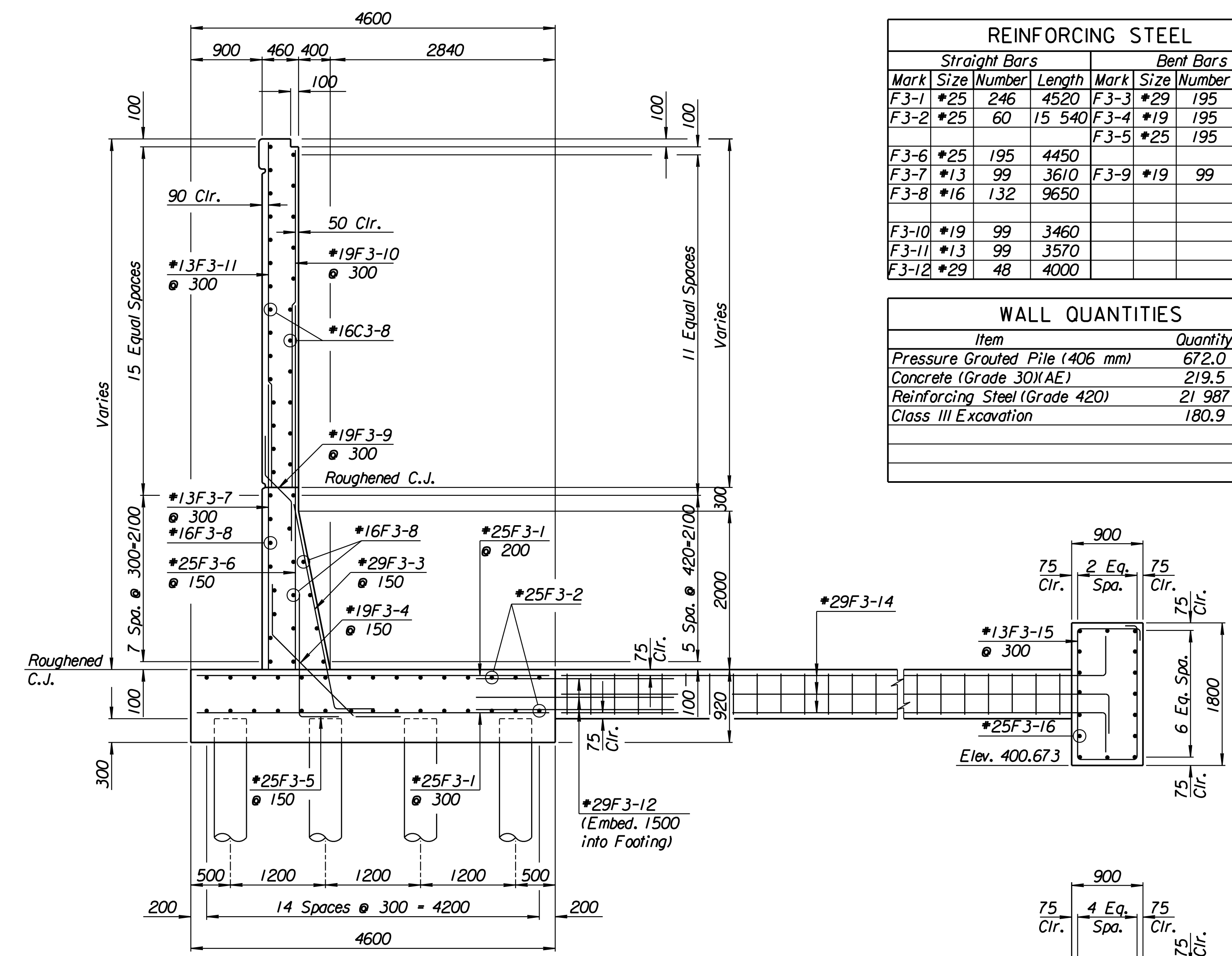
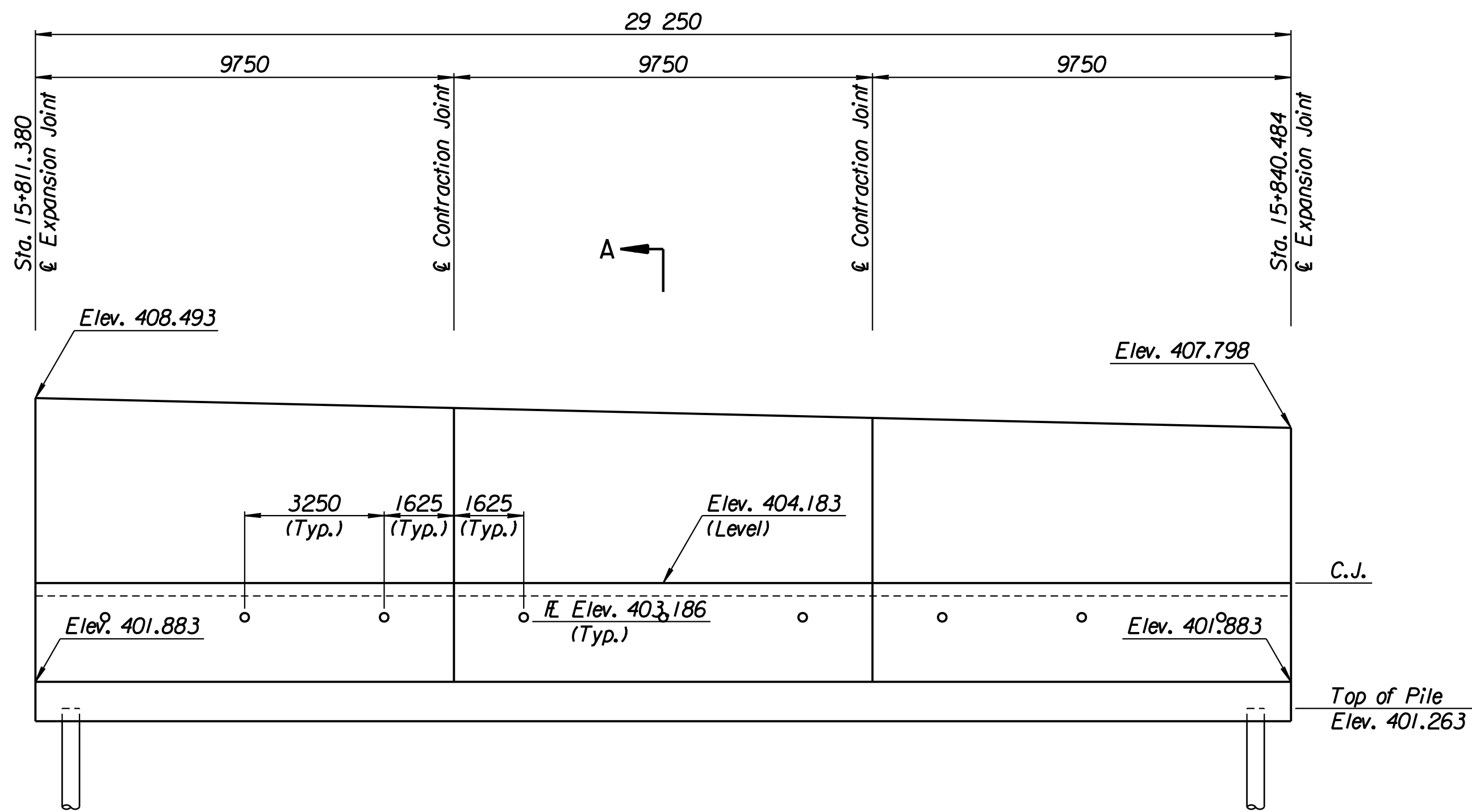


STATE	PROJECT NO.	YEAR	SHEET NO.	TOTAL SHEETS
KANSAS	54-87 K-6657-01	2002	297	1122

LAYOUT INFORMATION				
Point No.	North Coordinate	East Coordinate	Station	Offset
1	511409.642	491812.179	15+811.380	19.395 Rt.
2	511414.109	491811.079	15+811.380	14.795 Rt.
3	511421.205	491839.425	15+840.484	14.795 Rt.
4	511416.747	491840.559	15+840.484	19.395 Rt.

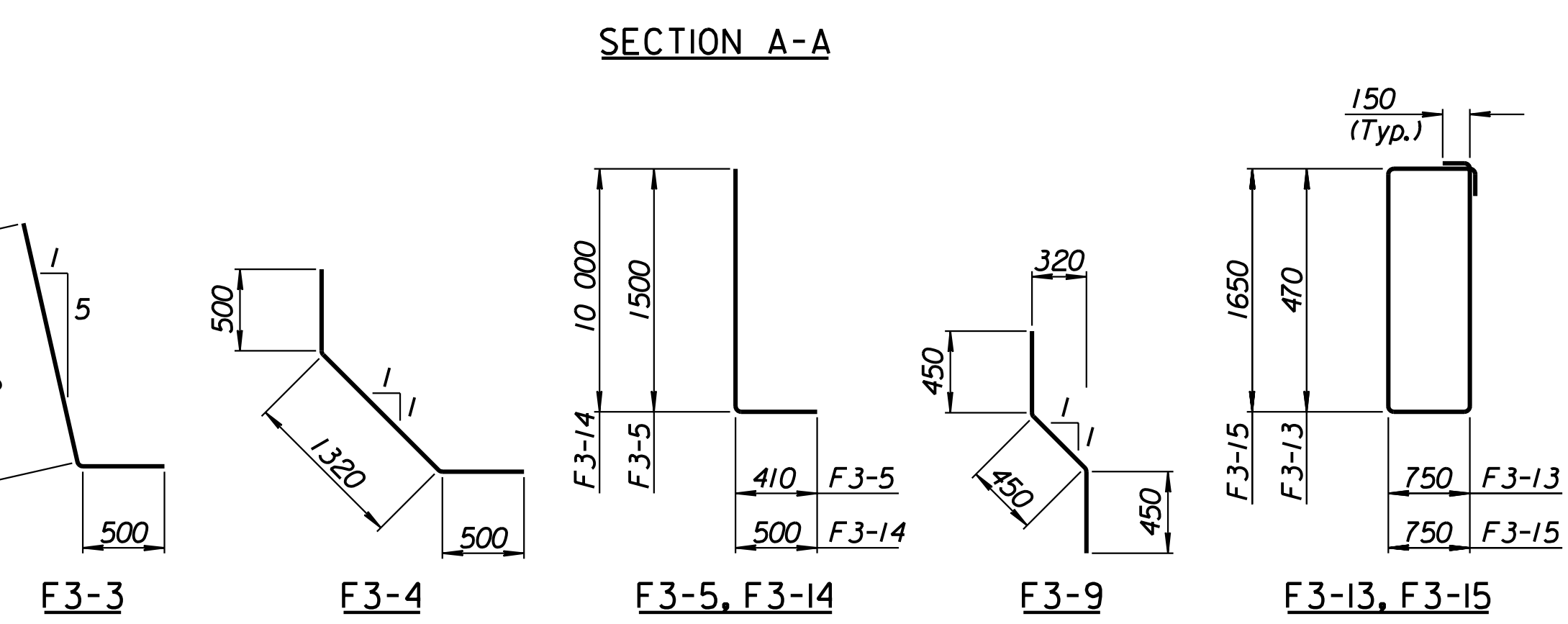
REINFORCING STEEL							
Straight Bars				Bent Bars			
Mark	Size	Number	Length	Mark	Size	Number	Length
F3-1	*25	246	4520	F3-3	*29	195	3250
F3-2	*25	60	15 540	F3-4	*19	195	2320
F3-6	*25	195	4450	F3-5	*25	195	1910
F3-7	*13	99	3610	F3-9	*19	99	1350
F3-8	*16	132	9650				
F3-10	*19	99	3460				
F3-11	*13	99	3570				
F3-12	*29	48	4000				

WALL QUANTITIES		
Item	Quantity	Unit
Pressure Grouted Pile (406 mm)	672.0	m
Concrete (Grade 30)(AE)	219.5	m ³
Reinforcing Steel (Grade 420)	21 987	kg
Class III Excavation	180.9	m ³



TIE BACK REINFORCING STEEL							
Straight Bars				Bent Bars			
Mark	Size	Number	Length	Mark	Size	Number	Length
F3-16	*25	32	15 040	F3-13	*13	128	2740
				F3-14	*29	48	10 500
				F3-15	*13	94	5100

TIE BACK QUANTITIES		
Item	Quantity	Unit
Concrete (Grade 30)(AE)	67.1	m ³
Reinforcing Steel (Grade 420)	5288	kg



BENDING DIAGRAMS
All dimensions are out to out of bars.

RECORD DRAWING

1			
No.	Revisions	By	Date
CITY OF WICHITA			
MAIZE SOUTHEAST WALL			
STA. 15+811.380 TO STA. 15+840.484			
SEDGWICK COUNTY			
Professional Engineering Consultants, P.A. 303 S. TOPEKA • WICHITA, KANSAS 67202 316-262-2691 • FAX 316-262-3003			
Designed by	P.D.F.	Checked by	R.A.S.
Drawn by	W.L.L.	Date	Apr. 2002
		Job No.	97362

Drawn by: wil
 Plotted by: drp
 3-25-2002
 1:1997/97362/As-Built/s/Edwall-6.dgn
 Vol 2/Sh 297-Maize-SEWall-6.dgn
 Last Rev: 8-22-07
 By: gdr