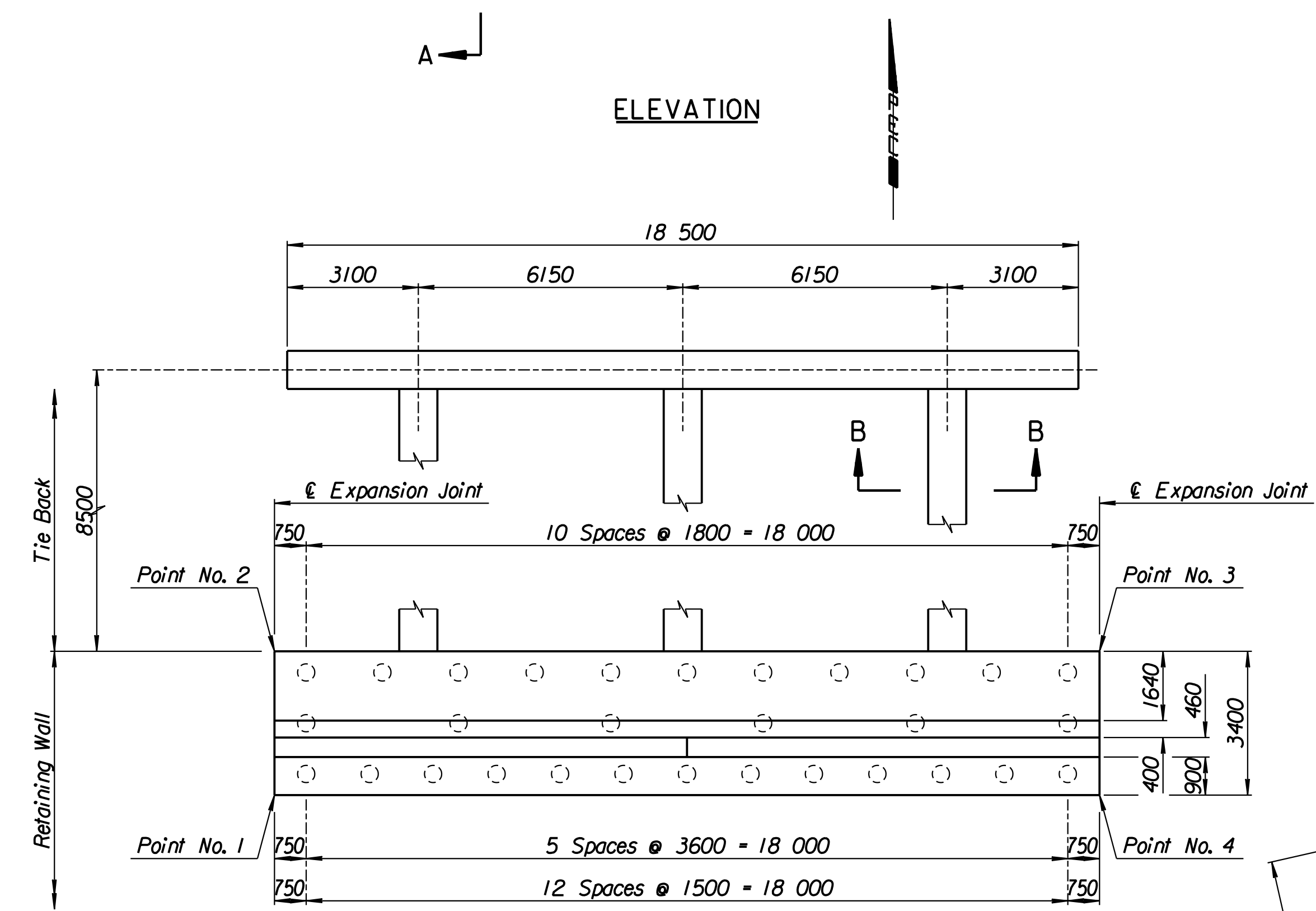
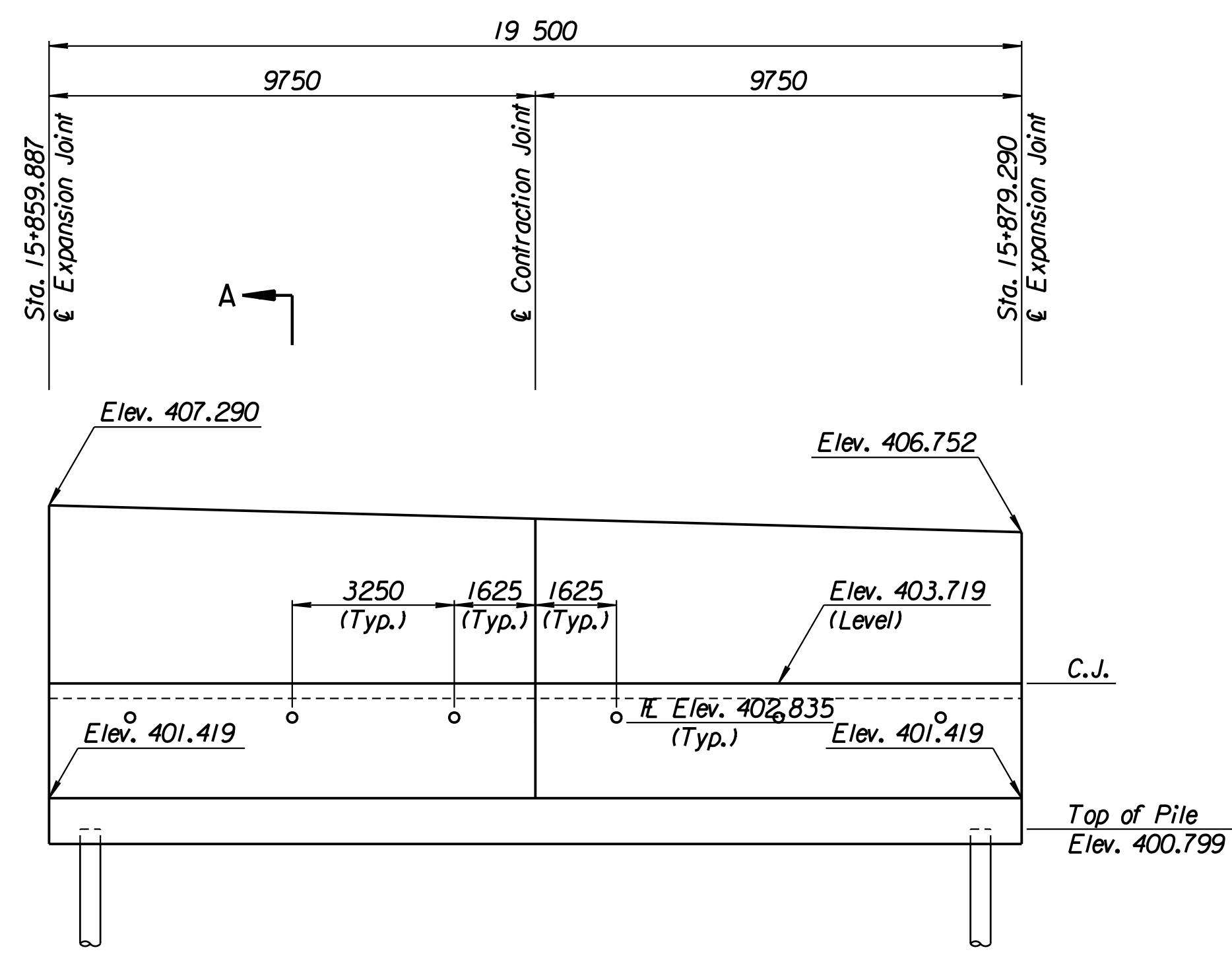


STATE	PROJECT NO.	YEAR	SHEET NO.	TOTAL SHEETS
KANSAS	54-87 K-6657-01	2002	299	1122

LAYOUT INFORMATION				
Point No.	North Coordinate	East Coordinate	Station	Offset
1	511421.608	491859.449	15+859.887	19.395 Rt.
2	511424.898	491858.593	15+859.887	15.995 Rt.
3	511429.853	491877.439	15+879.290	15.995 Rt.
4	511426.567	491878.312	15+879.290	19.395 Rt.

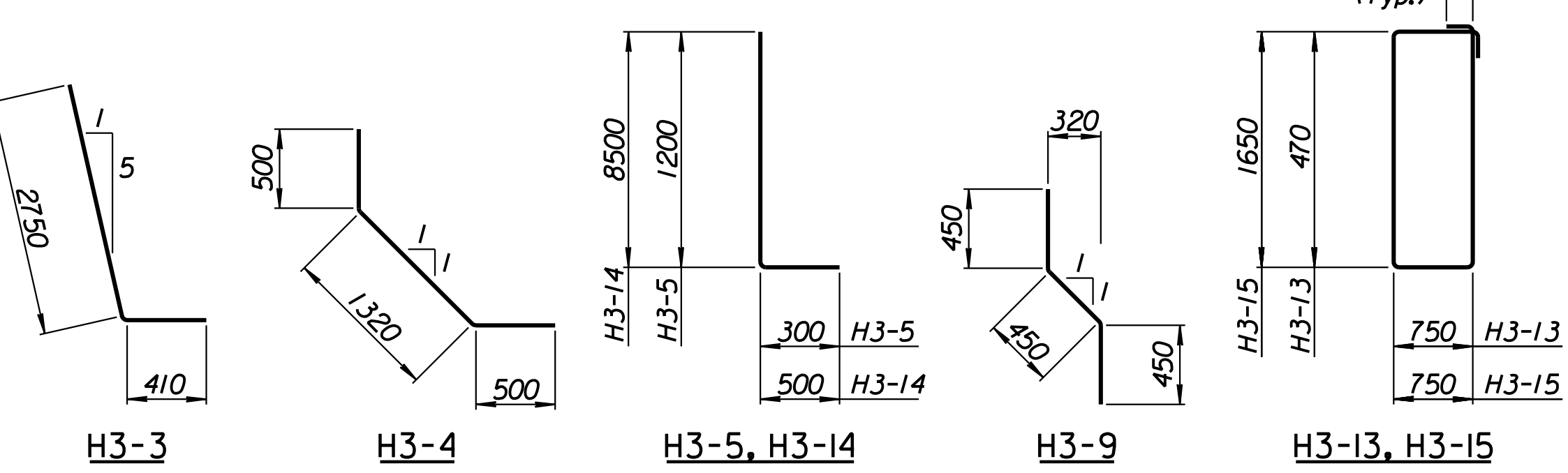
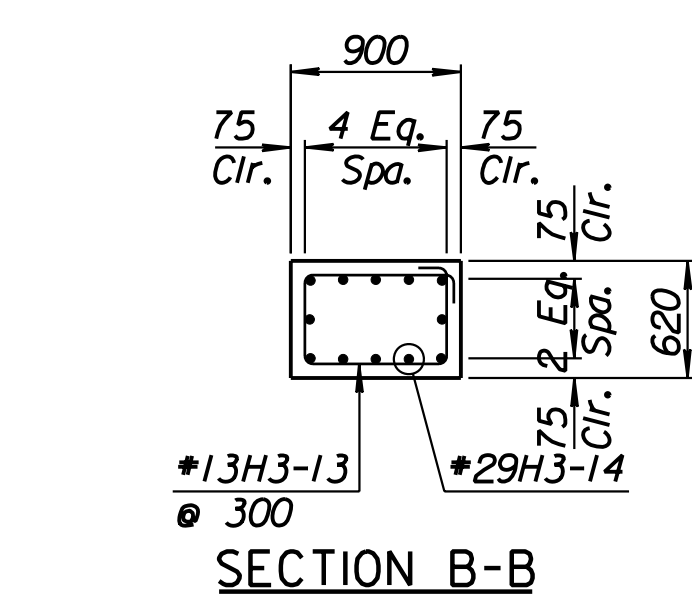
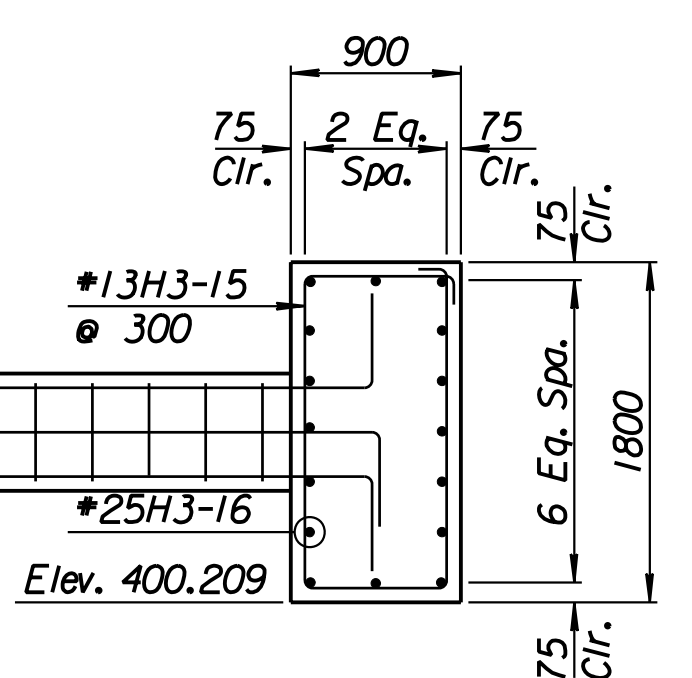
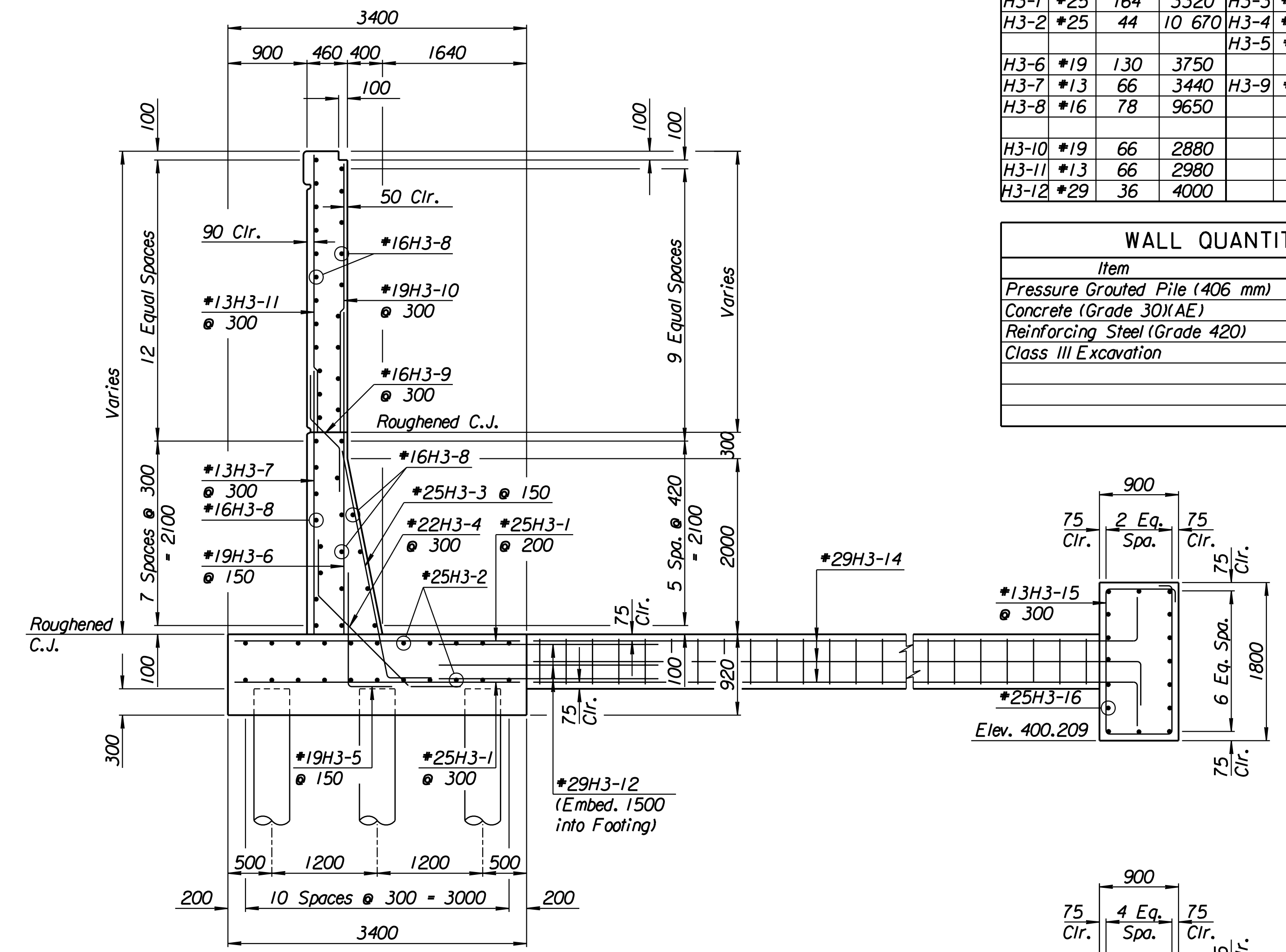
REINFORCING STEEL							
Straight Bars				Bent Bars			
Mark	Size	Number	Length	Mark	Size	Number	Length
H3-1	*25	164	3320	H3-3	*25	130	3160
H3-2	*25	44	10 670	H3-4	*22	66	2320
H3-6	*19	130	3750	H3-5	*19	130	1500
H3-7	*13	66	3440	H3-9	*16	66	1350
H3-8	*16	78	9650				
H3-10	*19	66	2880				
H3-11	*13	66	2980				
H3-12	*29	36	4000				

WALL QUANTITIES		
Item	Quantity	Unit
Pressure Grouted Pile (406 mm)	360.0	m
Concrete (Grade 30)(AE)	118.9	m <sup>3</sup>
Reinforcing Steel (Grade 420)	10 533	kg
Class III Excavation	79.6	m <sup>3</sup>



TIE BACK REINFORCING STEEL							
Straight Bars			Bent Bars				
Mark	Size	Number	Length	Mark	Size	Number	Length
H3-16	*25	32	10 170	H3-13	*13	81	2740
				H3-14	*29	36	9000
				H3-15	*13	63	5100

TIE BACK QUANTITIES		
Item	Quantity	Unit
Concrete (Grade 30)(AE)	43.4	m <sup>3</sup>
Reinforcing Steel (Grade 420)	3472	kg



**BENDING DIAGRAMS**  
All dimensions are out to out of bars.

**RECORD DRAWING**

1			
No.	Revisions	By	Date
CITY OF WICHITA			
<b>MAIZE SOUTHEAST WALL</b>			
STA. 15+859.887 TO STA. 15+879.290			
SEDGWICK COUNTY			
 <b>Professional Engineering Consultants, P.A.</b> 303 S. TOPEKA • WICHITA, KANSAS 67202 316-262-2691 • FAX 316-262-3003			
Designed by	P.D.F.	Checked by	R.A.S.
Drawn by	W.L.L.	Date	Apr. 2002
		Job No.	97362

Drawn by: wil  
 Plotted by: drp  
 3-25-2002  
 1:1997/97362/As-Built/dgn/s/Vol 2/Sh 299-Maize-SEWall-8.dgn Last Rev: 8-22-07 By: gdr