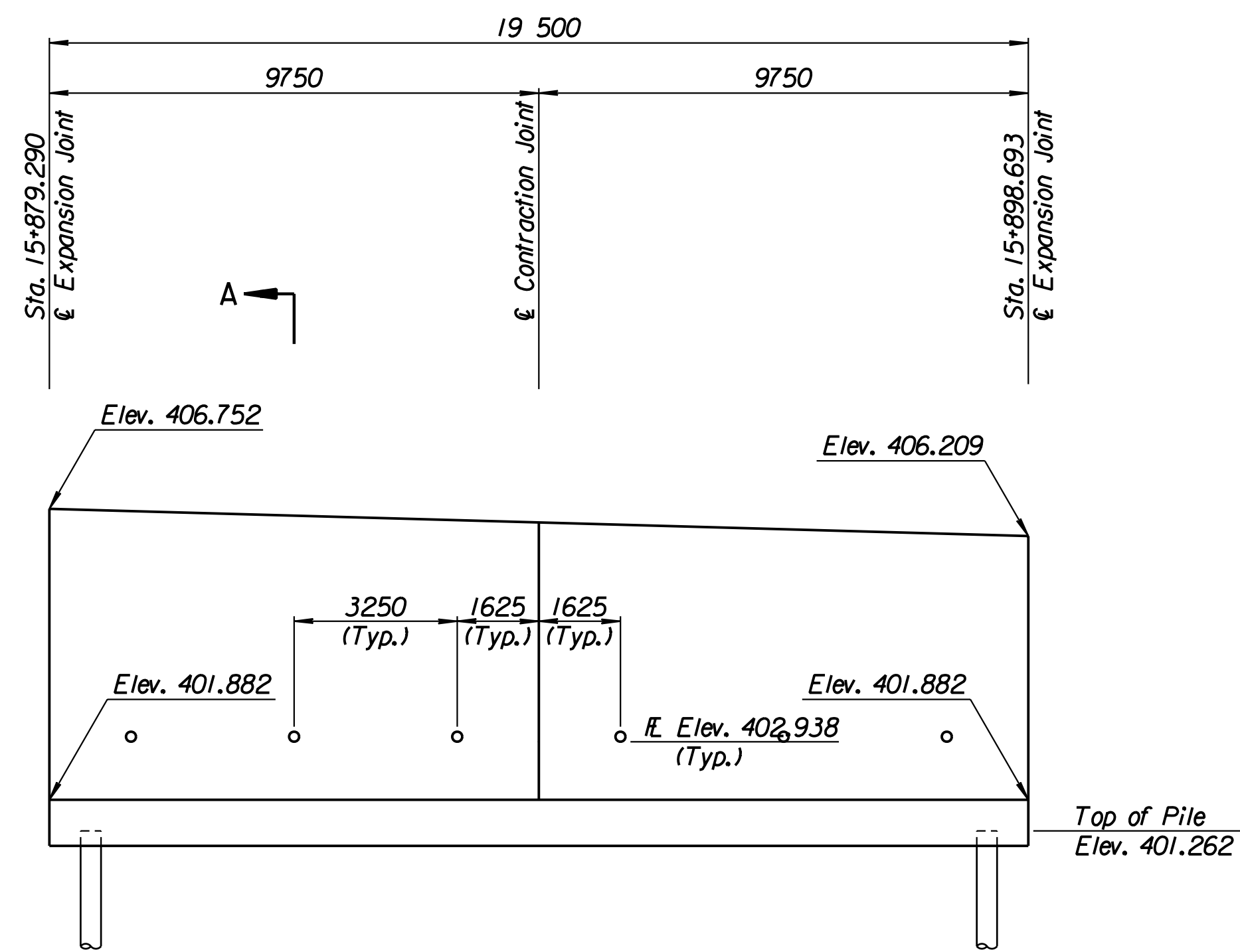


STATE	PROJECT NO.	YEAR	SHEET NO.	TOTAL SHEETS
KANSAS	54-87 K-6657-01	2002	300	1122

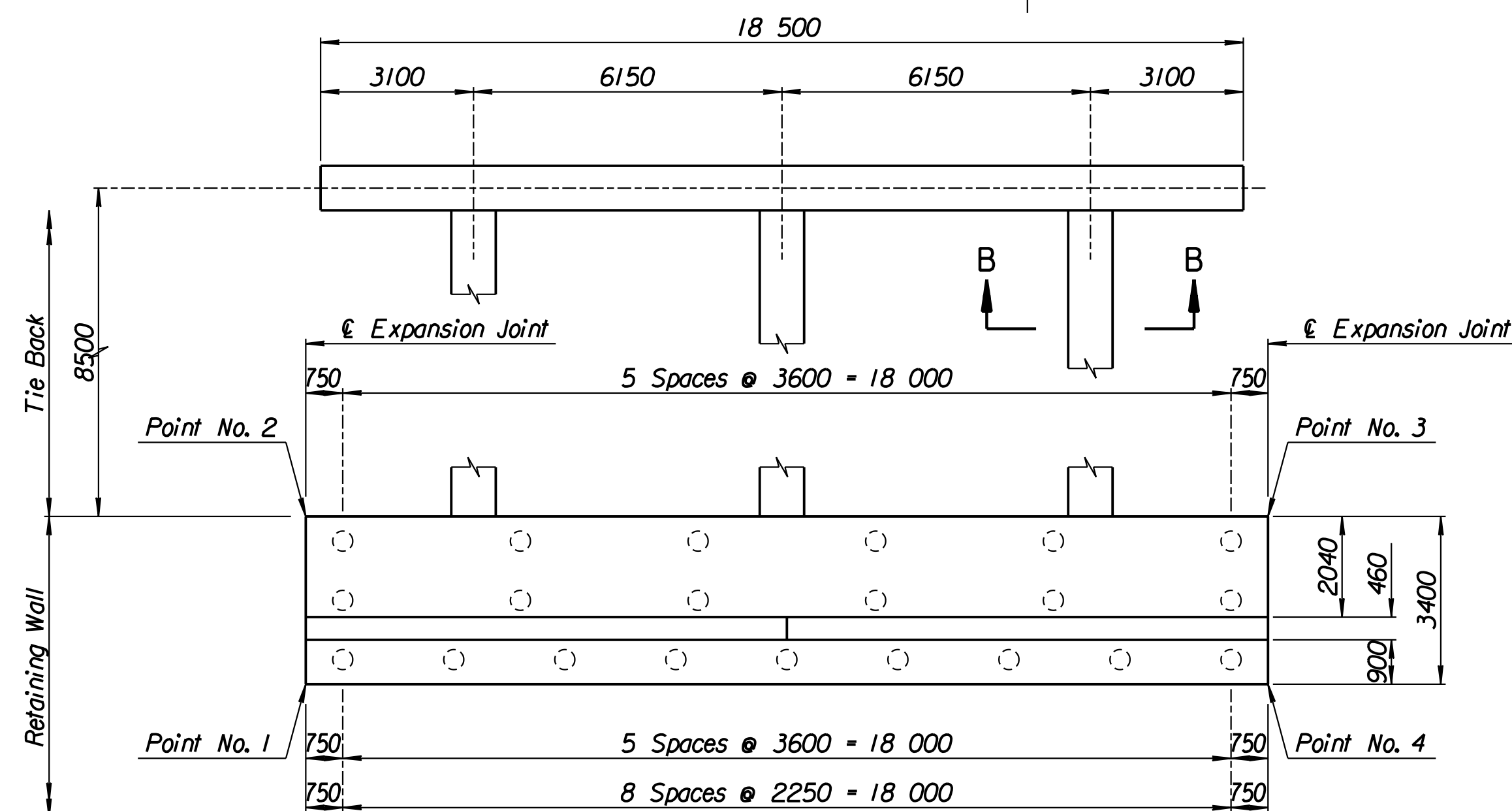
LAYOUT INFORMATION				
Point No.	North Coordinate	East Coordinate	Station	Offset
1	511426.567	491878.312	15+879.290	19.395 Rt.
2	511429.853	491877.439	15+879.290	15.995 Rt.
3	511434.907	491896.259	15+898.693	15.995 Rt.
4	511431.626	491897.150	15+898.693	19.395 Rt.

REINFORCING STEEL							
Straight Bars				Bent Bars			
Mark	Size	Number	Length	Mark	Size	Number	Length
J3-1	*25	164	3320	J3-3	*25	130	2960
J3-2	*25	44	10 670	J3-4	*19	66	1970
J3-5	*16	60	9650				
J3-6	*19	66	4170				
J3-7	*13	66	4820				
J3-8	*29	36	4000				

WALL QUANTITIES		
Item	Quantity	Unit
Pressure Grouted Pile (406 mm)	252.0	m
Concrete (Grade 30)(AE)	102.0	m ³
Reinforcing Steel (Grade 420)	8406	kg
Class III Excavation	3.9	m ³



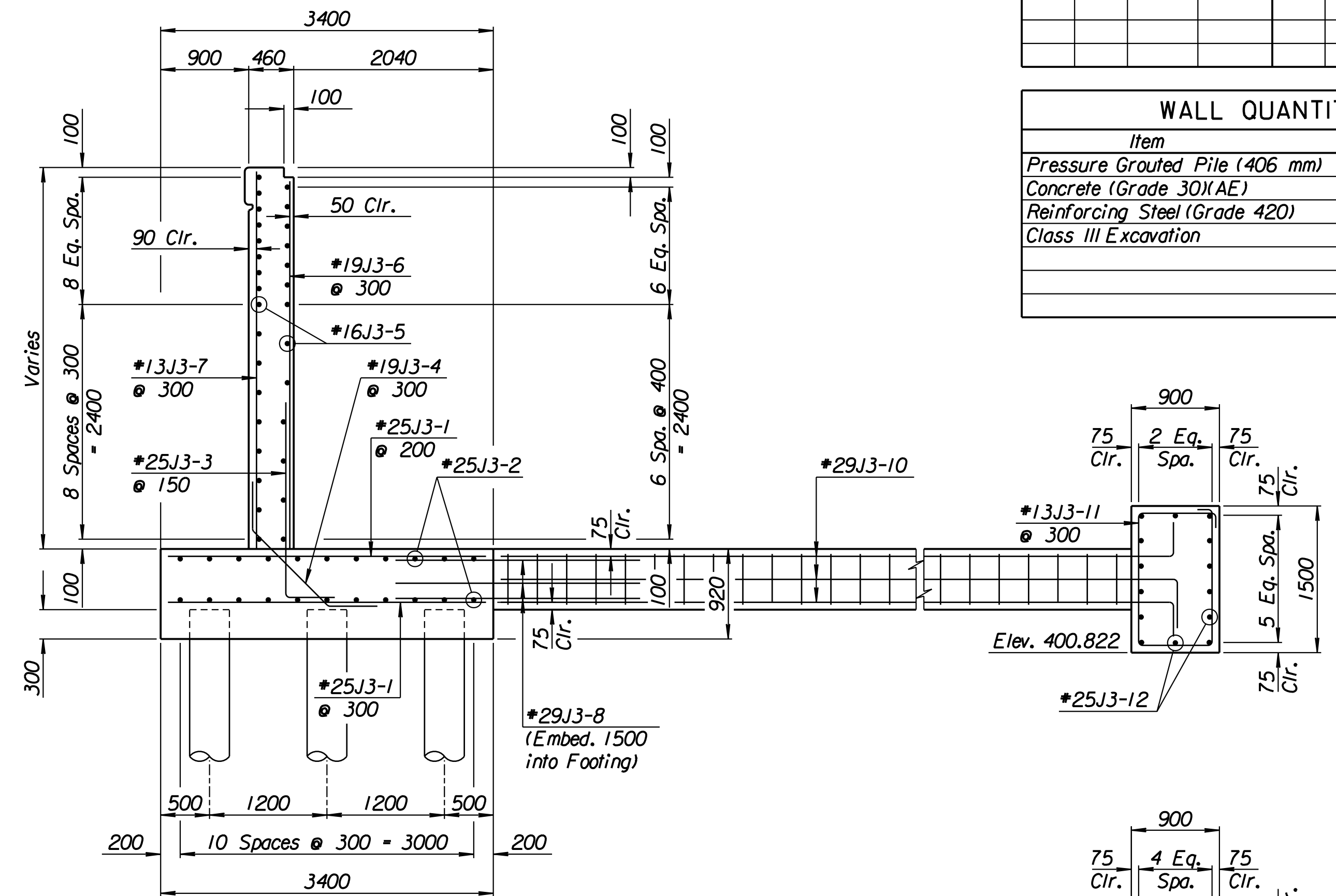
ELEVATION



PLAN

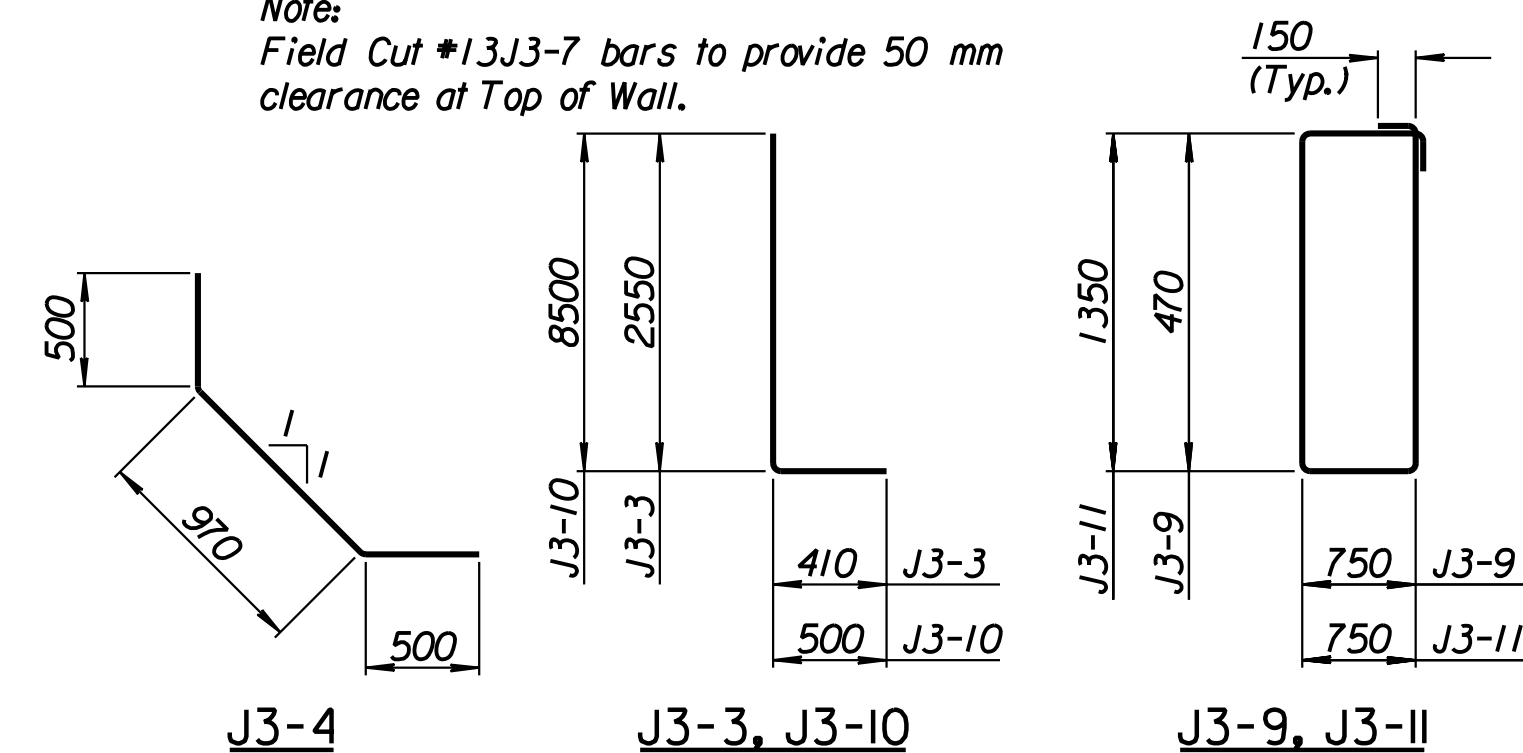
TIE BACK REINFORCING STEEL							
Straight Bars			Bent Bars				
Mark	Size	Number	Length	Mark	Size	Number	Length
J3-12	*25	28	10 170	J3-9	*13	81	2740
				J3-10	*29	36	9000
				J3-11	*13	63	4500

TIE BACK QUANTITIES		
Item	Quantity	Unit
Concrete (Grade 30)(AE)	38.5	m ³
Reinforcing Steel (Grade 420)	3273	kg



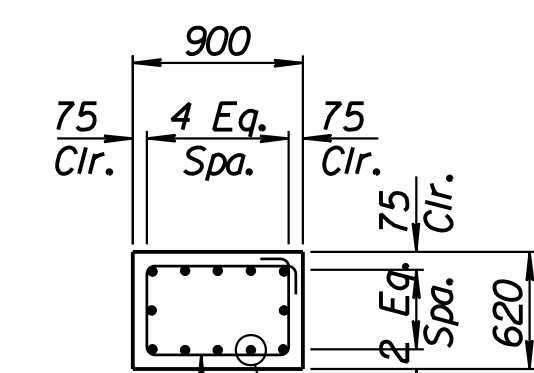
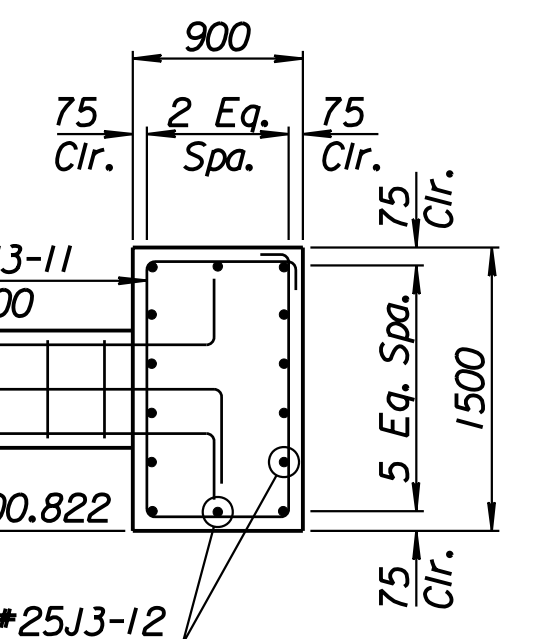
SECTION A-A

Note:
Field Cut #13J3-7 bars to provide 50 mm clearance at Top of Wall.



BENDING DIAGRAMS

All dimensions are out to out of bars.



SECTION B-B

No.	Revisions	By	Date
-----	-----------	----	------

CITY OF WICHITA
MAIZE SOUTHEAST WALL
 STA. 15+879.290 TO STA. 15+898.693
 SEDGWICK COUNTY

Professional Engineering Consultants, P.A.
 303 S. TOPEKA • WICHITA, KANSAS 67202
 316-262-2691 • FAX 316-262-3003

Designed by	P.D.F.	Checked by	R.A.S.
Drawn by	W.L.L.	Date	Apr. 2002
		Job No.	97362

Drawn by: wil
 Plotted by: drp
 3-25-2002
 1:1997/97362/As-Built/s/dgn/s/Vol 2/Sh 300-Maize-SEWall-9.dgn Last Rev: 8-22-07 By: gd