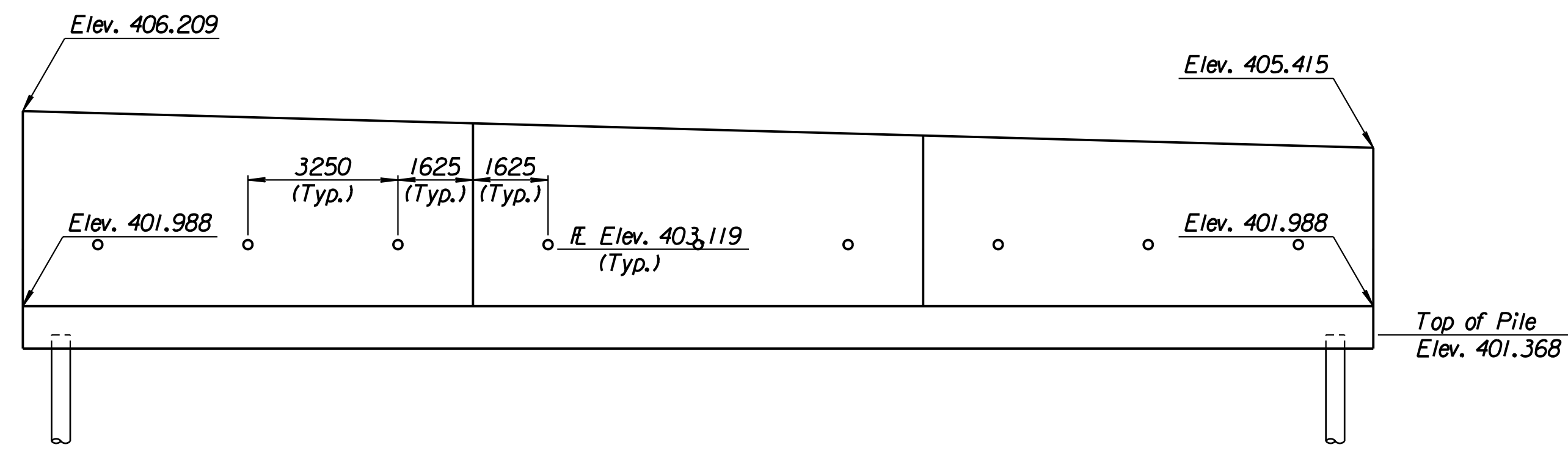
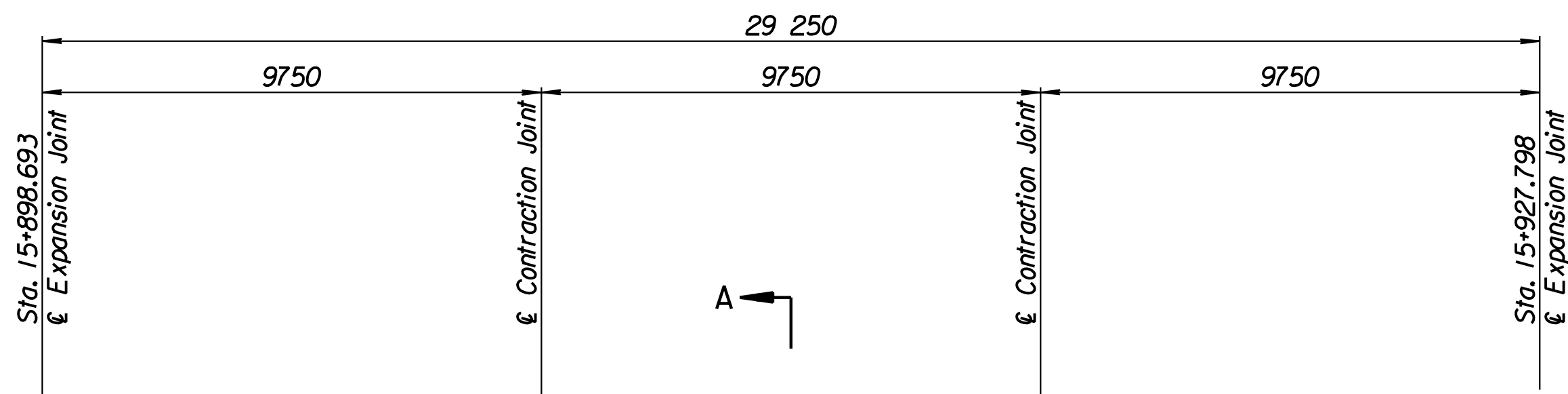


STATE	PROJECT NO.	YEAR	SHEET NO.	TOTAL SHEETS
KANSAS	54-87 K-6657-01	2002	301	1122

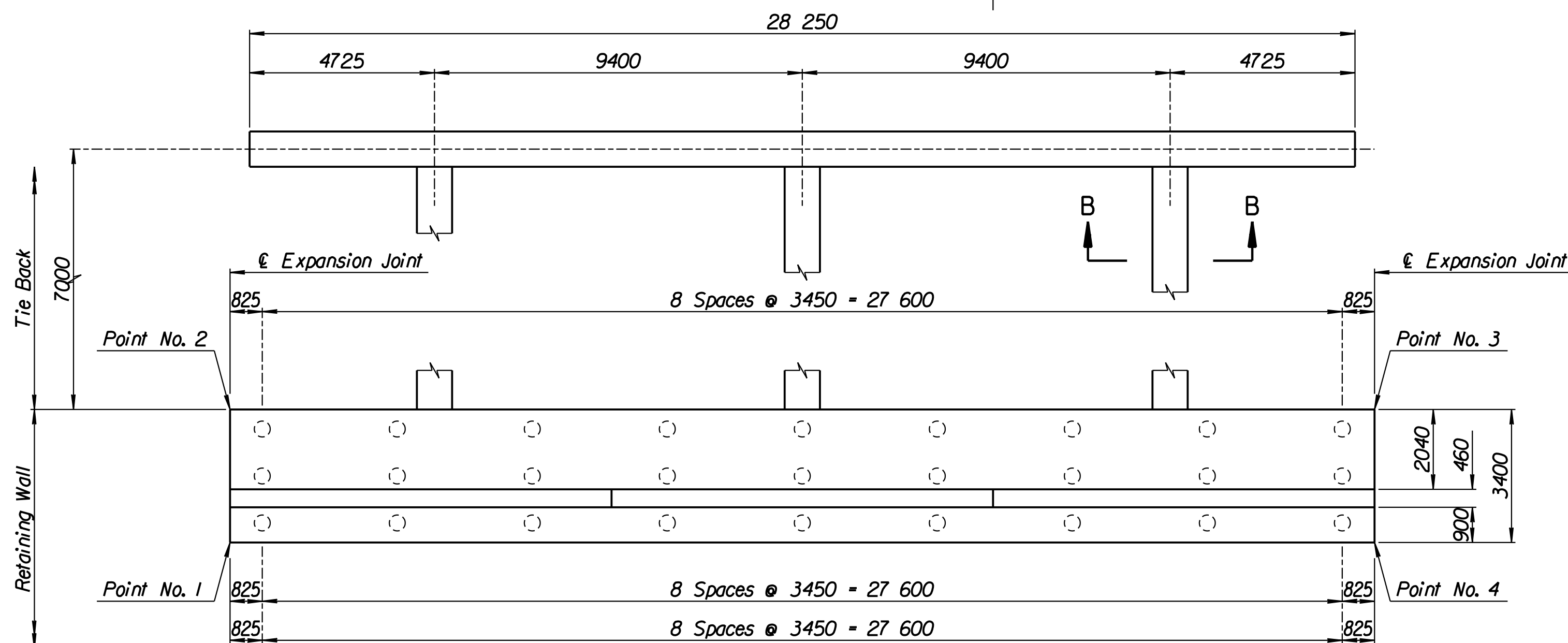
LAYOUT INFORMATION				
Point No.	North Coordinate	East Coordinate	Station	Offset
1	511431.626	491897.150	15+898.693	19.395 Rt.
2	511434.907	491896.259	15+898.693	15.995 Rt.
3	511442.673	491924.439	15+927.798	15.995 Rt.
4	511439.399	491925.356	15+927.798	19.395 Rt.

REINFORCING STEEL							
Straight Bars				Bent Bars			
Mark	Size	Number	Length	Mark	Size	Number	Length
K3-1	*25	246	3320	K3-3	*22	195	2810
K3-2	*25	44	15 540	K3-4	*16	99	1970
K3-5	*16	78	9650				
K3-6	*19	99	3280				
K3-7	*13	99	4170				
K3-8	*29	36	4000				

WALL QUANTITIES		
Item	Quantity	Unit
Pressure Grouted Pile (406 mm)	324.0	m
Concrete (Grade 30)(AE)	142.7	m ³
Reinforcing Steel (Grade 420)	10 964	kg
Class III Excavation	2.3	m ³



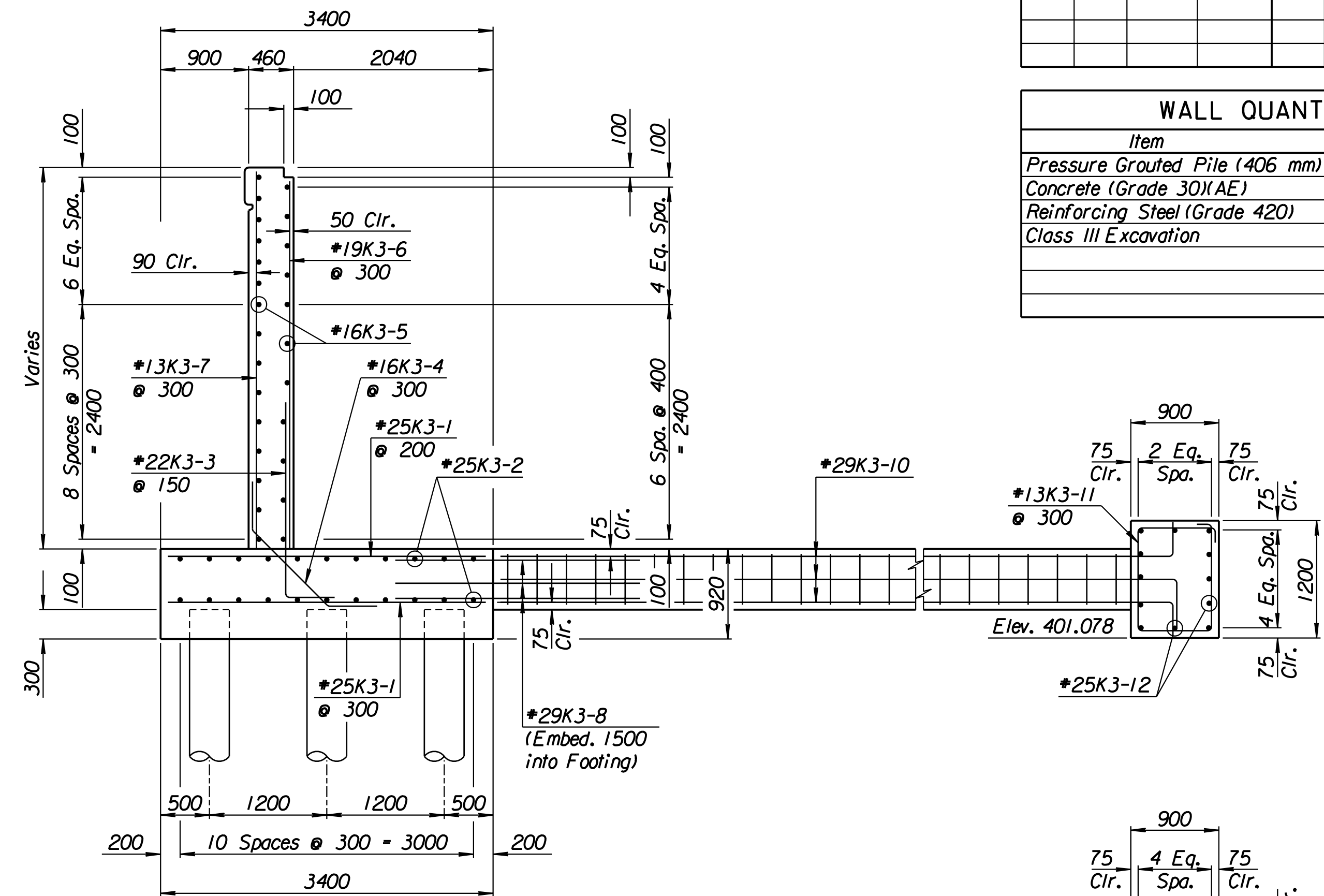
ELEVATION



PLAN

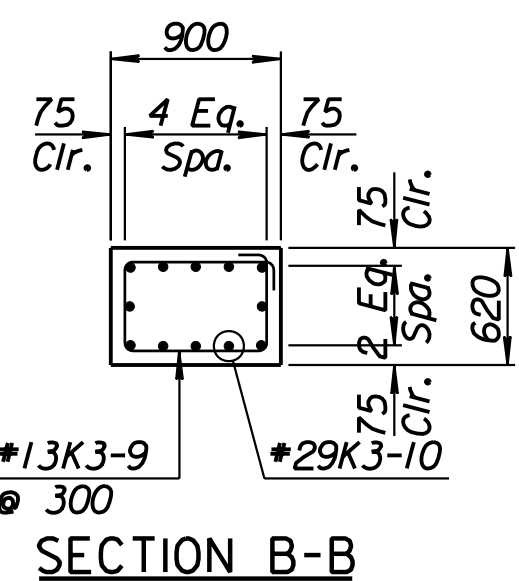
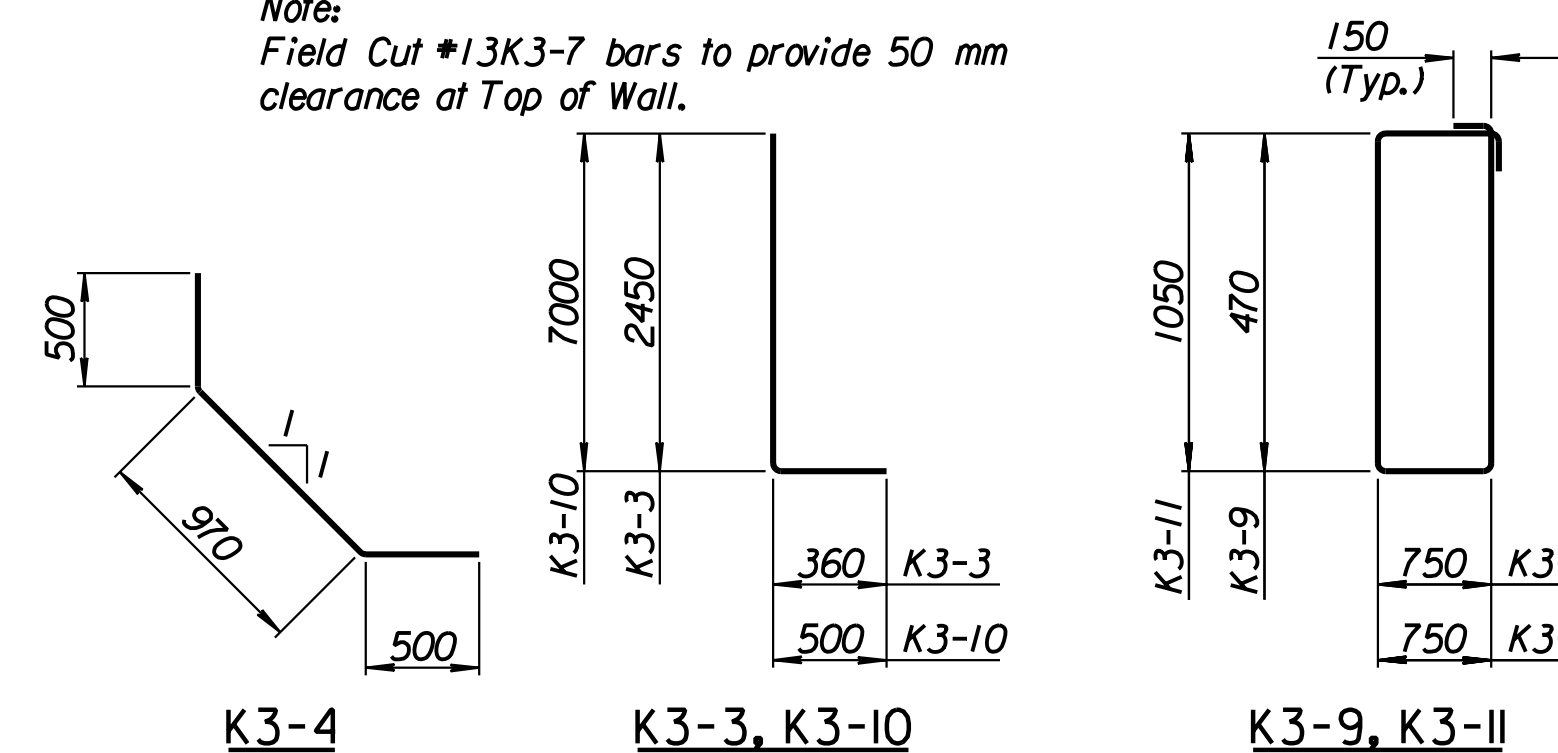
TIE BACK REINFORCING STEEL							
Straight Bars				Bent Bars			
Mark	Size	Number	Length	Mark	Size	Number	Length
K3-12	*25	24	15 040	K3-9	*13	66	2740
				K3-10	*29	36	7500
				K3-11	*13	94	3900

TIE BACK QUANTITIES		
Item	Quantity	Unit
Concrete (Grade 30)(AE)	41.5	m ³
Reinforcing Steel (Grade 420)	3344	kg



SECTION A-A

Note:
Field Cut #13K3-7 bars to provide 50 mm clearance at Top of Wall.



SECTION B-B

Drawn by: wil
Plotted by: drp
1/1997/97362/As-Built/s/dgn/s/Vol 2/Sh 301-Maize-SEWall-I-0.dgn Last Rev: 8-22-07 By: gdr

1			
No.	Revisions	By	Date
CITY OF WICHITA			
MAIZE SOUTHEAST WALL			
STA. 15+898.693 TO STA. 15+927.798			
SEDGWICK COUNTY			
Professional Engineering Consultants, P.A.			
303 S. TOPEKA • WICHITA, KANSAS 67202			
316-262-2691 • FAX 316-262-3003			
Designed by	P.D.F.	Checked by	R.A.S.
Drawn by	W.L.L.	Date	Apr. 2002
		Job No.	97362

RECORD DRAWING