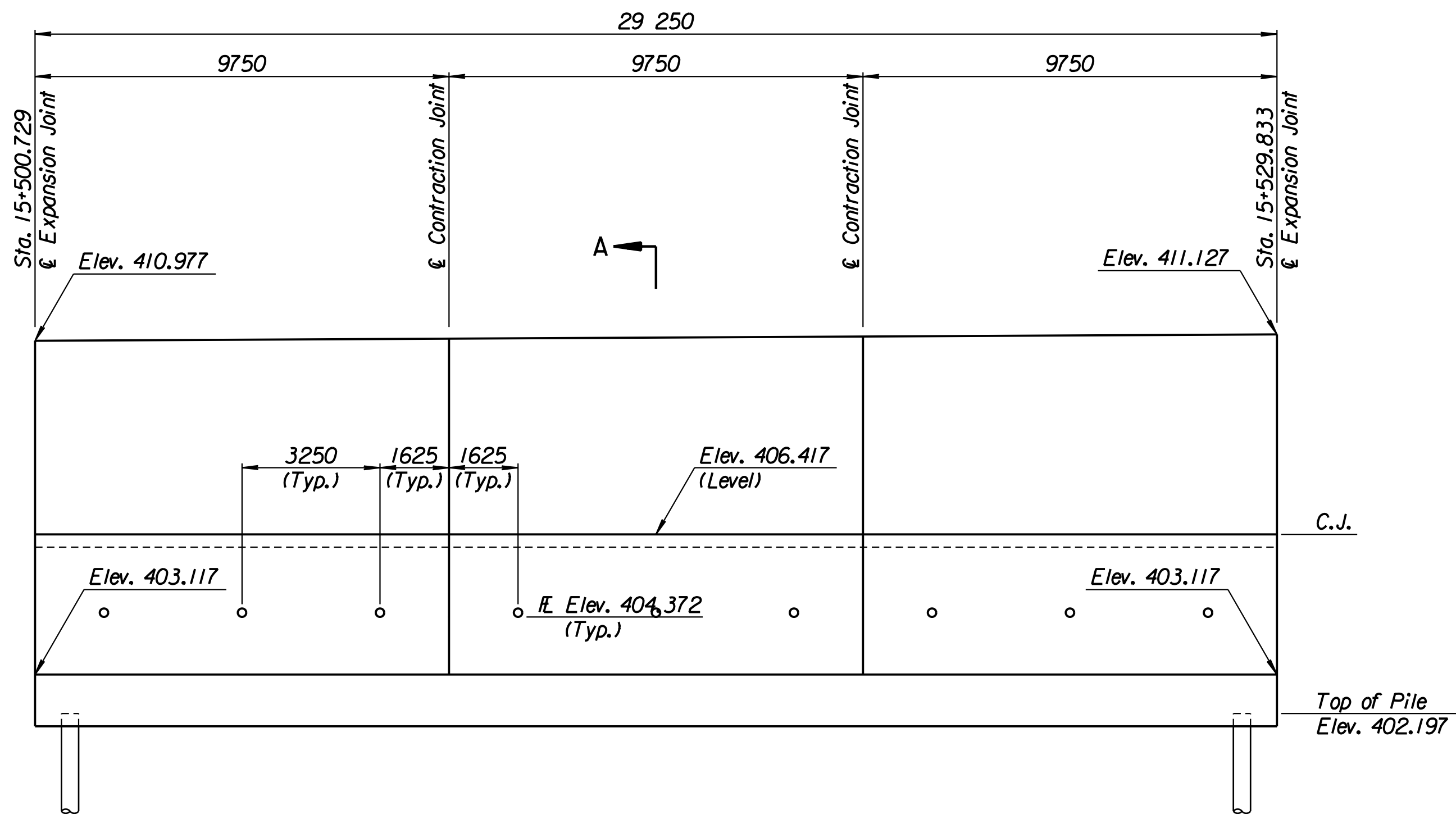


STATE	PROJECT NO.	YEAR	SHEET NO.	TOTAL SHEETS
KANSAS	54-87 K-6657-01	2002	304	1122

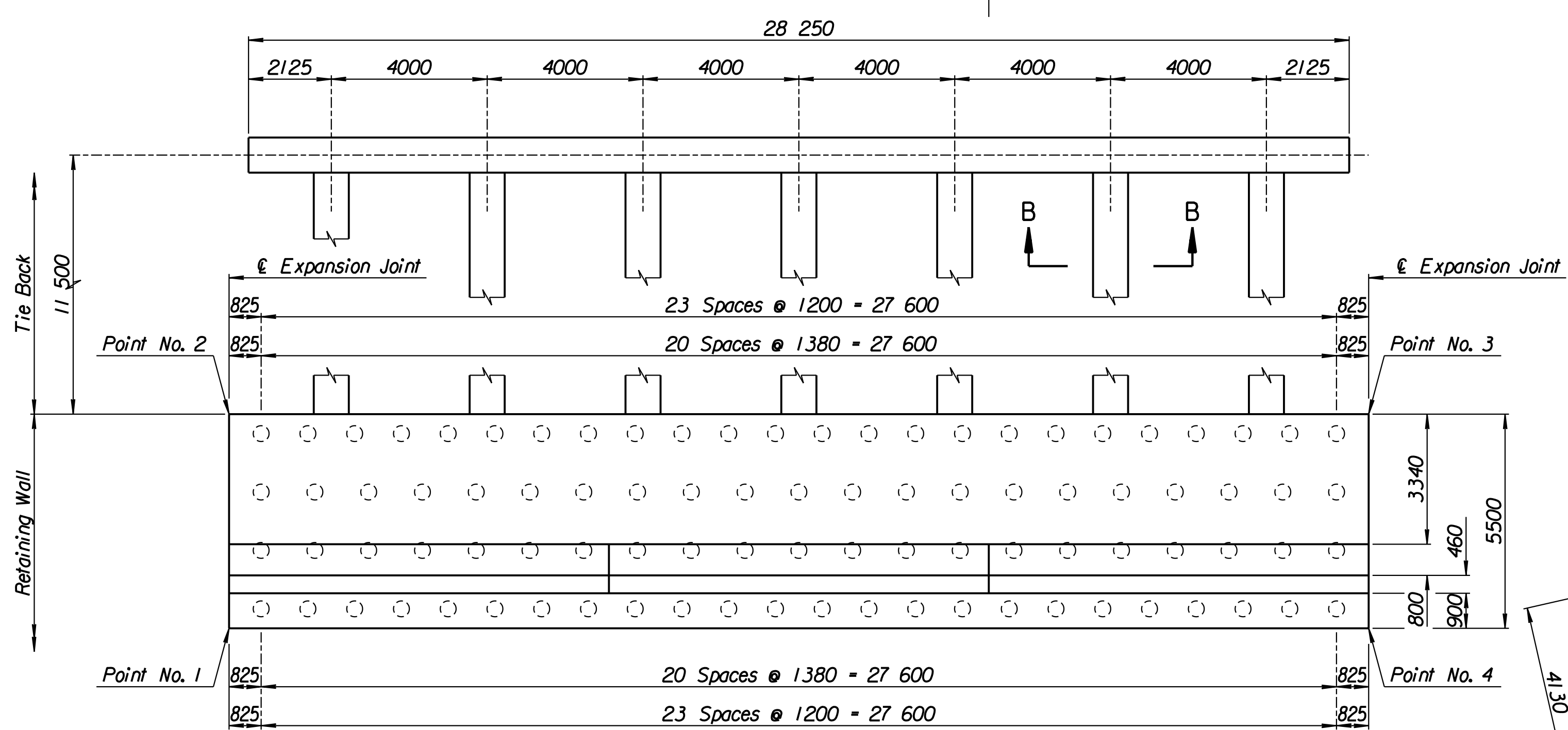
LAYOUT INFORMATION				
Point No.	North Coordinate	East Coordinate	Station	Offset
1	511347.807	491506.176	15+500.729	19.395 Rt.
2	511353.239	491505.314	15+500.729	13.895 Rt.
3	511357.932	491534.148	15+529.833	13.895 Rt.
4	511352.507	491535.053	15+529.833	19.395 Rt.

REINFORCING STEEL							
Straight Bars				Bent Bars			
Mark	Size	Number	Length	Mark	Size	Number	Length
B4-1	*29	312	5420	B4-3	*29	195	4630
B4-2	*25	72	15 540	B4-4	*22	195	2830
B4-6	*29	195	5300	B4-5	*29	195	2700
B4-7	*13	99	4060	B4-9	*19	99	1350
B4-8	*16	165	9650				
B4-10	*19	99	4410				
B4-11	*13	99	4510				
B4-12	*29	84	4000				

WALL QUANTITIES		
Item	Quantity	Unit
Pressure Grouted Pile (406 mm)	1080.0	m
Concrete (Grade 30)(AE)	337.8	m ³
Reinforcing Steel (Grade 420)	33 432	kg
Class III Excavation	404.5	m ³



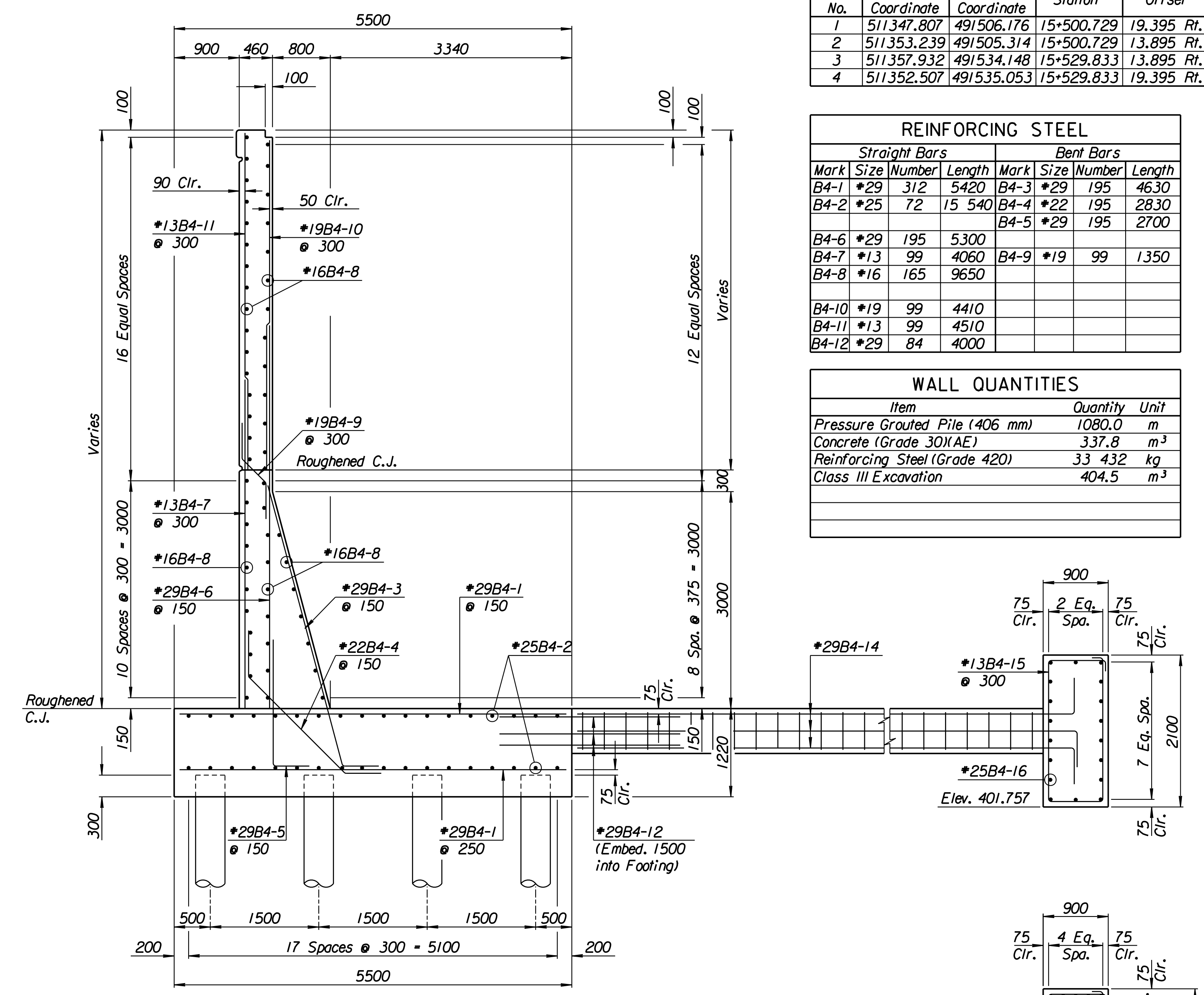
ELEVATION



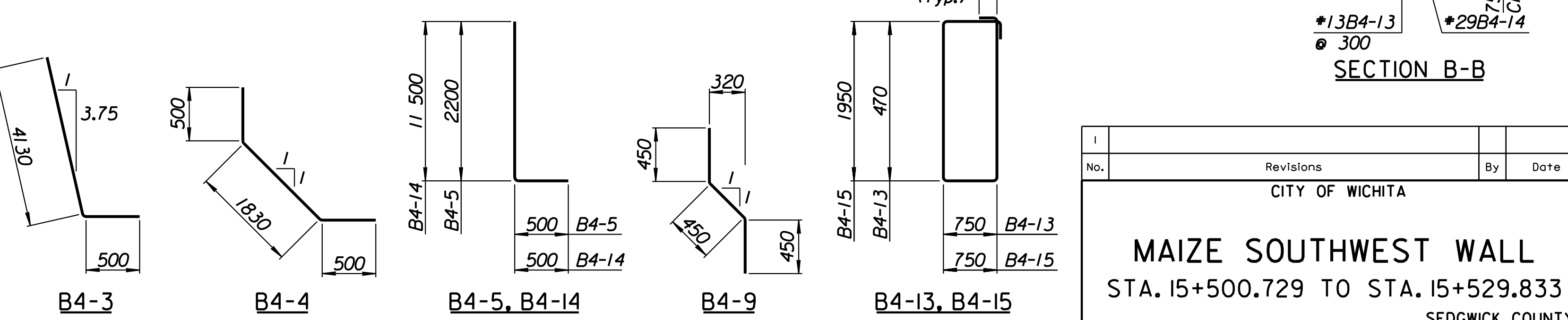
PLAN

TIE BACK REINFORCING STEEL							
Straight Bars			Bent Bars				
Mark	Size	Number	Length	Mark	Size	Number	Length
B4-16	*25	36	15 040	B4-13	*13	259	2740
				B4-14	*29	84	12 000
				B4-15	*13	94	5700

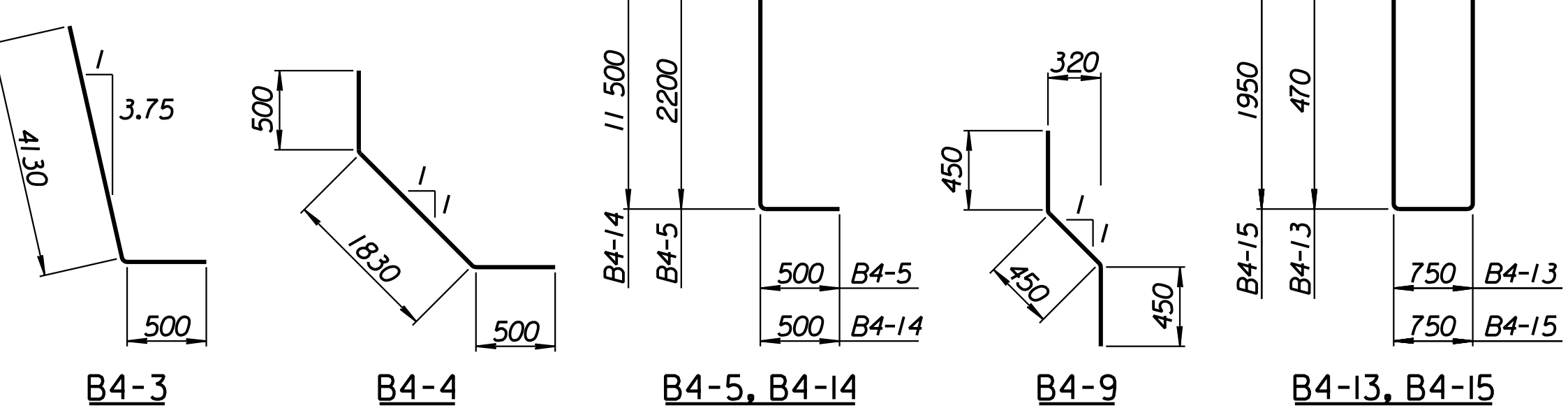
TIE BACK QUANTITIES		
Item	Quantity	Unit
Concrete (Grade 30)(AE)	96.6	m ³
Reinforcing Steel (Grade 420)	8490	kg



SECTION A-A



SECTION B-B



BENDING DIAGRAMS
All dimensions are out to out of bars.

RECORD DRAWING

1			
No.	Revisions	By	Date
CITY OF WICHITA			
MAIZE SOUTHWEST WALL			
STA. 15+500.729 TO STA. 15+529.833			
SEDGWICK COUNTY			
Professional Engineering Consultants, P.A. 303 S. TOPEKA • WICHITA, KANSAS 67202 316-262-2691 • FAX 316-262-3003			
Designed by	P.D.F.	Checked by	R.A.S.
Drawn by	W.L.L.	Date	Apr. 2002
		Job No.	97362

Drawn by: wil
 Plotted by: drp
 3-25-2002
 1:1997197362/As-Built/dgn/s/Vol 2/Sh 304-Maize-SWWall-11.dgn Last Rev: 8-22-07 By: gdr