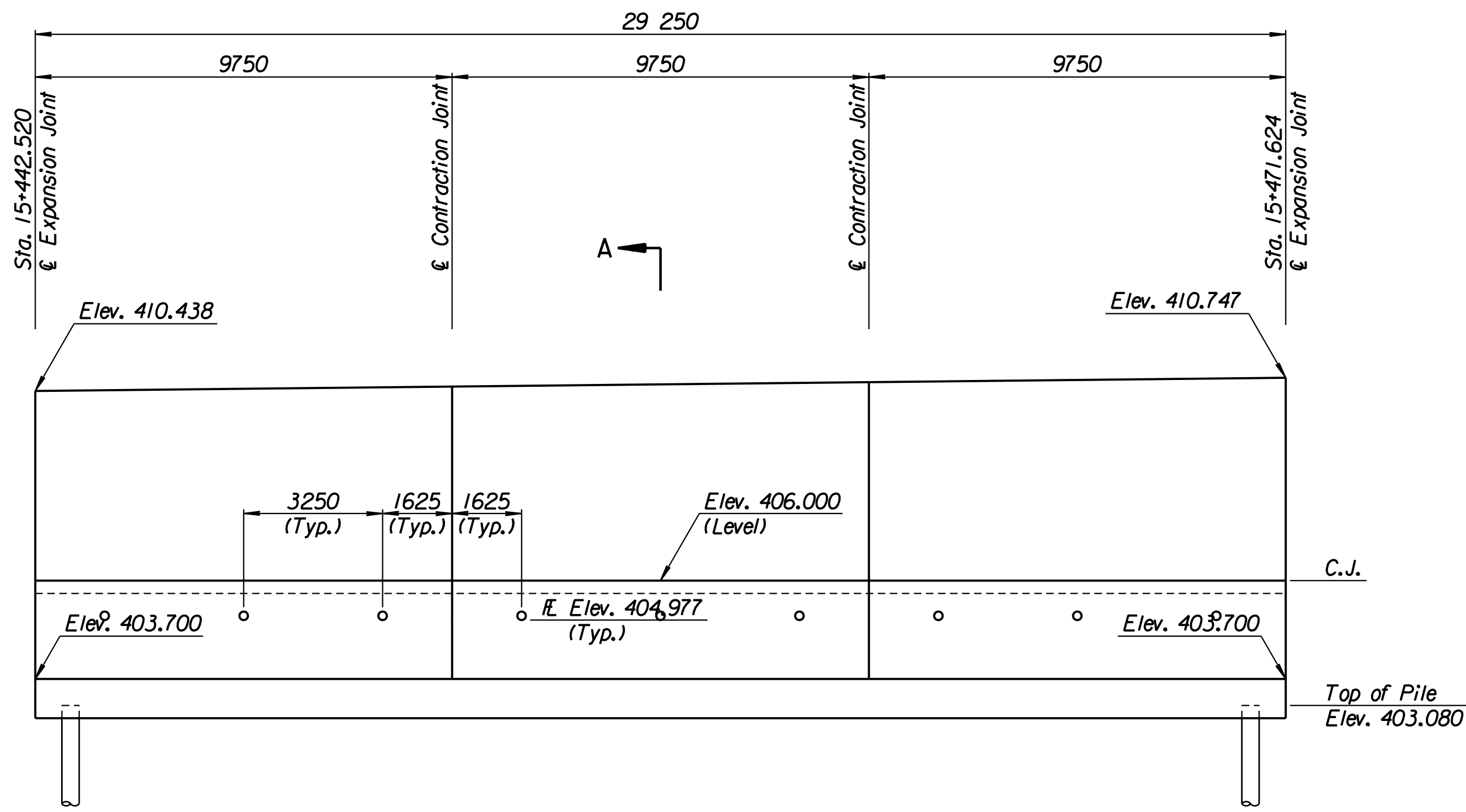


STATE	PROJECT NO.	YEAR	SHEET NO.	TOTAL SHEETS
KANSAS	54-87 K-6657-01	2002	306	1122

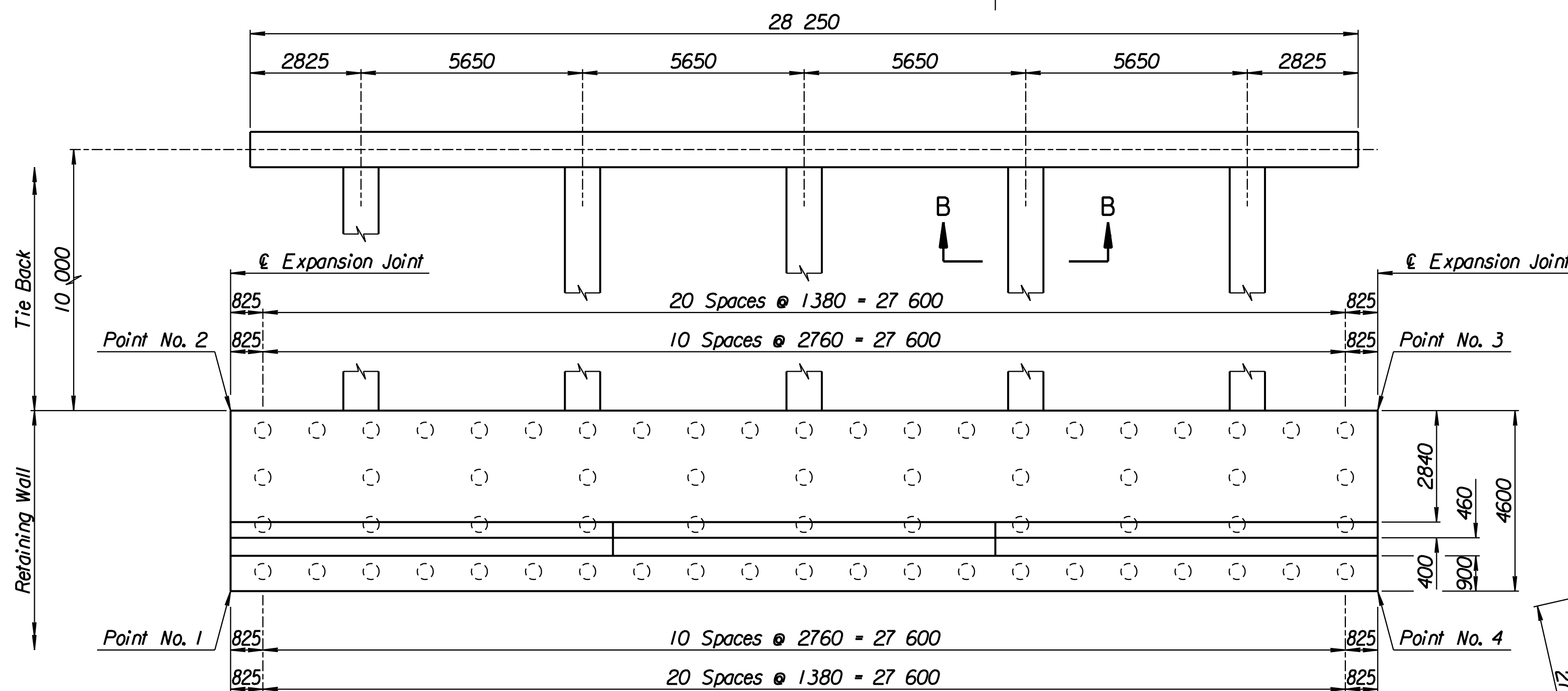
LAYOUT INFORMATION				
Point No.	North Coordinate	East Coordinate	Station	Offset
1	511339.089	491448.316	15+442.520	19.395 Rt.
2	511343.643	491447.666	15+442.520	14.795 Rt.
3	511347.883	491476.577	15+471.624	14.795 Rt.
4	511343.334	491477.262	15+471.624	19.395 Rt.

REINFORCING STEEL							
Straight Bars				Bent Bars			
Mark	Size	Number	Length	Mark	Size	Number	Length
D4-1	*25	294	4520	D4-3	*29	195	3250
D4-2	*25	60	15 540	D4-4	*19	195	2320
				D4-5	*29	195	2300
D4-6	*29	195	4460				
D4-7	*13	99	3220	D4-9	*19	99	1350
D4-8	*16	138	9650				
D4-10	*19	99	4290				
D4-11	*13	99	4390				
D4-12	*29	60	4000				

WALL QUANTITIES		
Item	Quantity	Unit
Pressure Grouted Pile (406 mm)	769.0	m
Concrete (Grade 30)(AE)	227.9	m ³
Reinforcing Steel (Grade 420)	25 150	kg
Class III Excavation	311.4	m ³



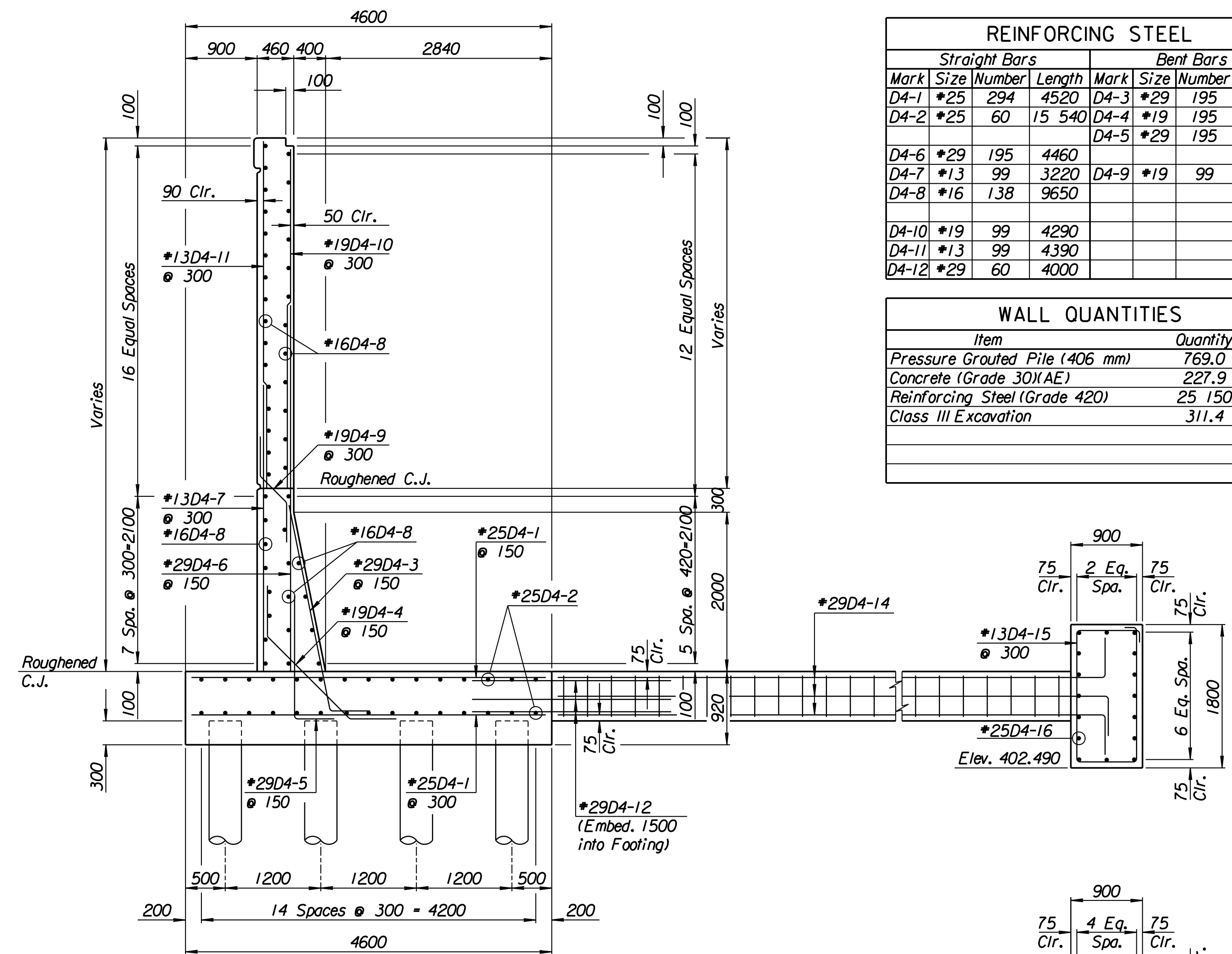
ELEVATION



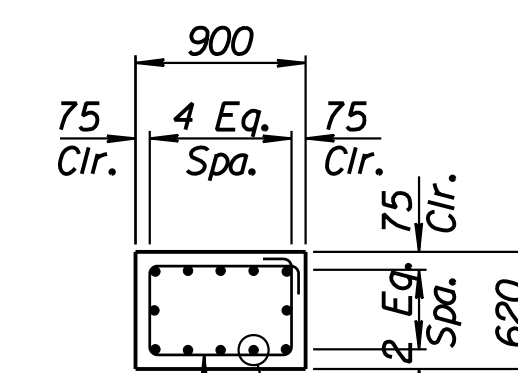
PLAN

TIE BACK REINFORCING STEEL							
Straight Bars			Bent Bars				
Mark	Size	Number	Length	Mark	Size	Number	Length
D4-16	*25	32	15 040	D4-13	*13	160	2740
				D4-14	*29	60	10 500
				D4-15	*13	94	5100

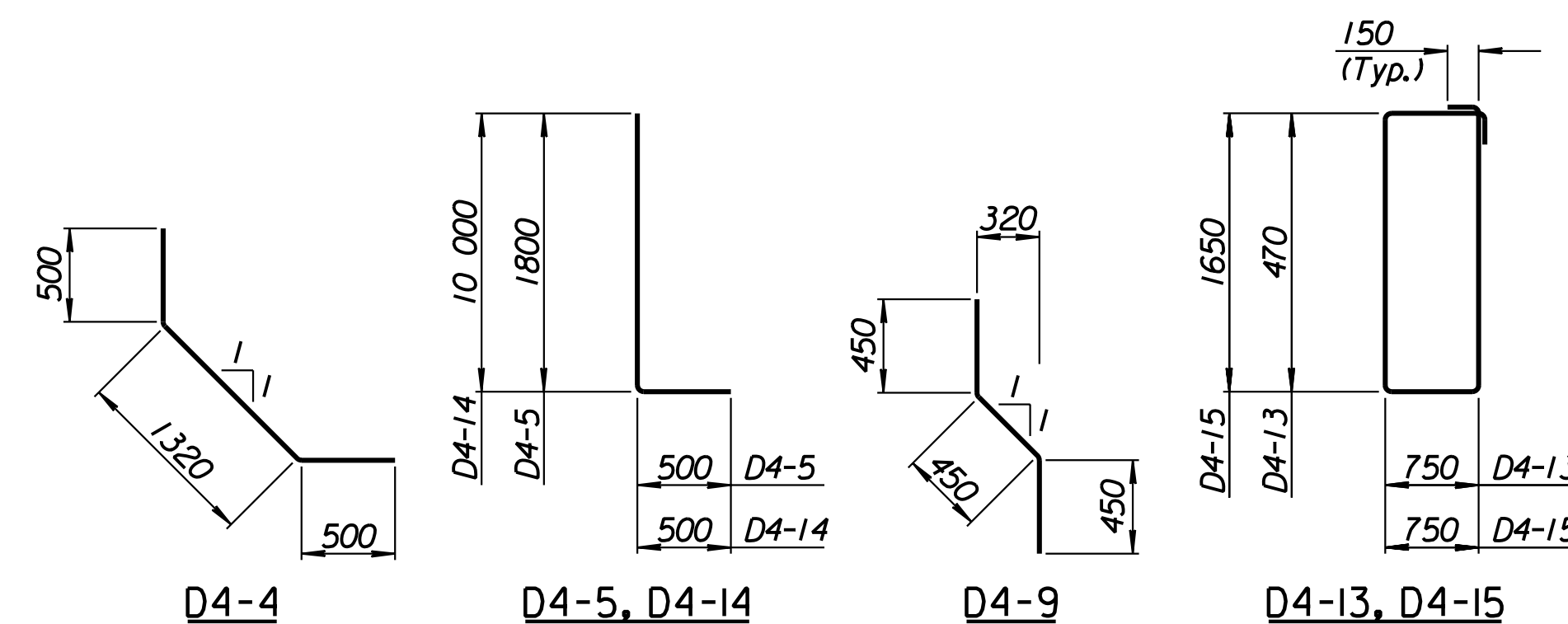
TIE BACK QUANTITIES		
Item	Quantity	Unit
Concrete (Grade 30)(AE)	72.4	m ³
Reinforcing Steel (Grade 420)	6012	kg



SECTION A-A



SECTION B-B



BENDING DIAGRAMS
All dimensions are out to out of bars.

RECORD DRAWING

No.	Revisions	By	Date

CITY OF WICHITA

MAIZE SOUTHWEST WALL
STA. 15+442.520 TO STA. 15+471.624
SEDGWICK COUNTY

Professional Engineering Consultants, P.A.
303 S. TOPEKA • WICHITA, KANSAS 67202
316-262-2691 • FAX 316-262-3003

Designed by P.D.F. Checked by R.A.S.
Drawn by W.L.L. Date Apr. 2002 Job No. 97362

Drawn by: wil
Plotted by: drp
1/1997/97362/As-Built/s/dgn/s/Vol 2/Sh 306-Maize-SWWall-9.dgn Last Rev: 8-22-07 By: gdr