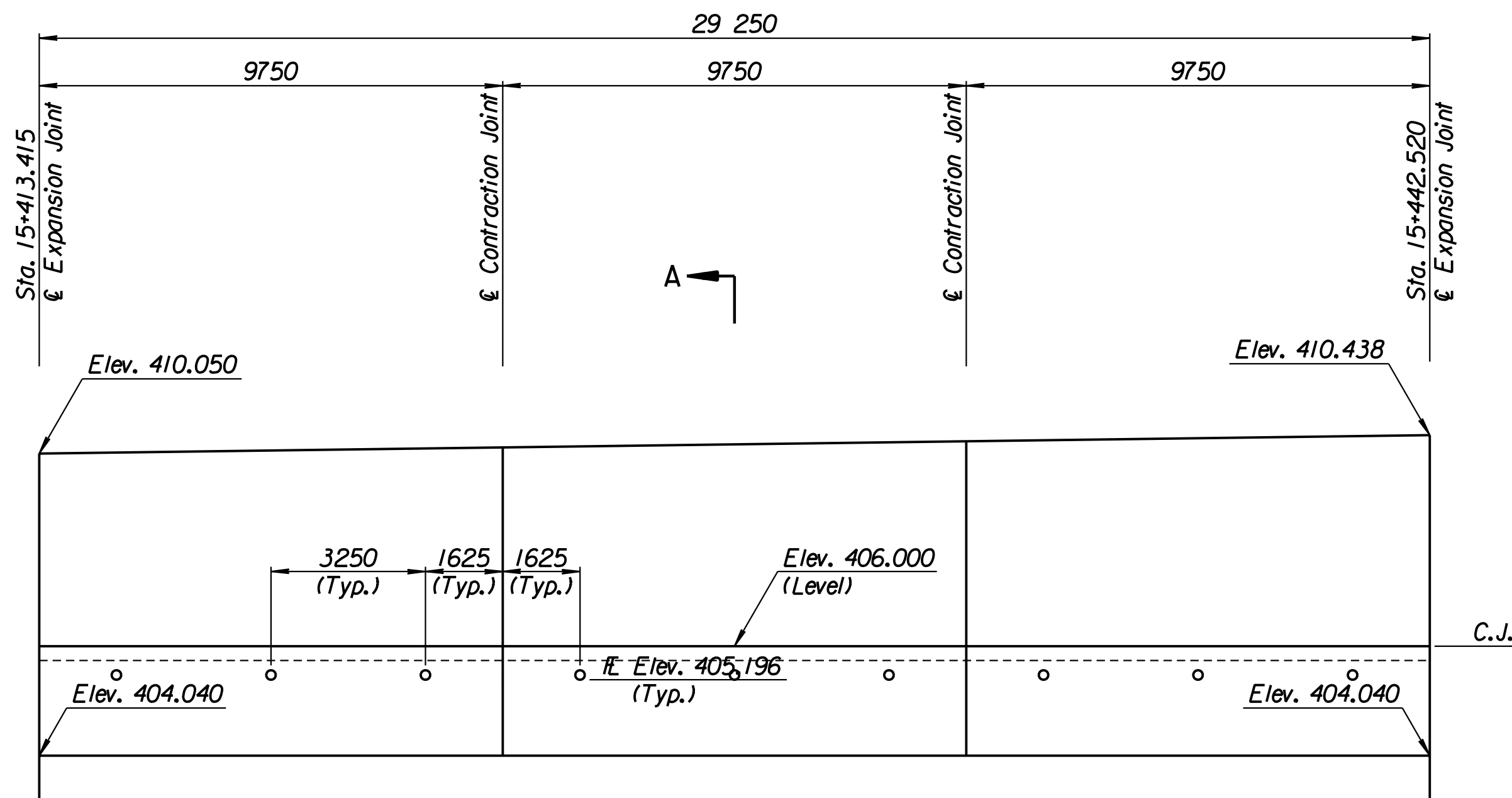


STATE	PROJECT NO.	YEAR	SHEET NO.	TOTAL SHEETS
KANSAS	54-87 K-6657-01	2002	307	1122

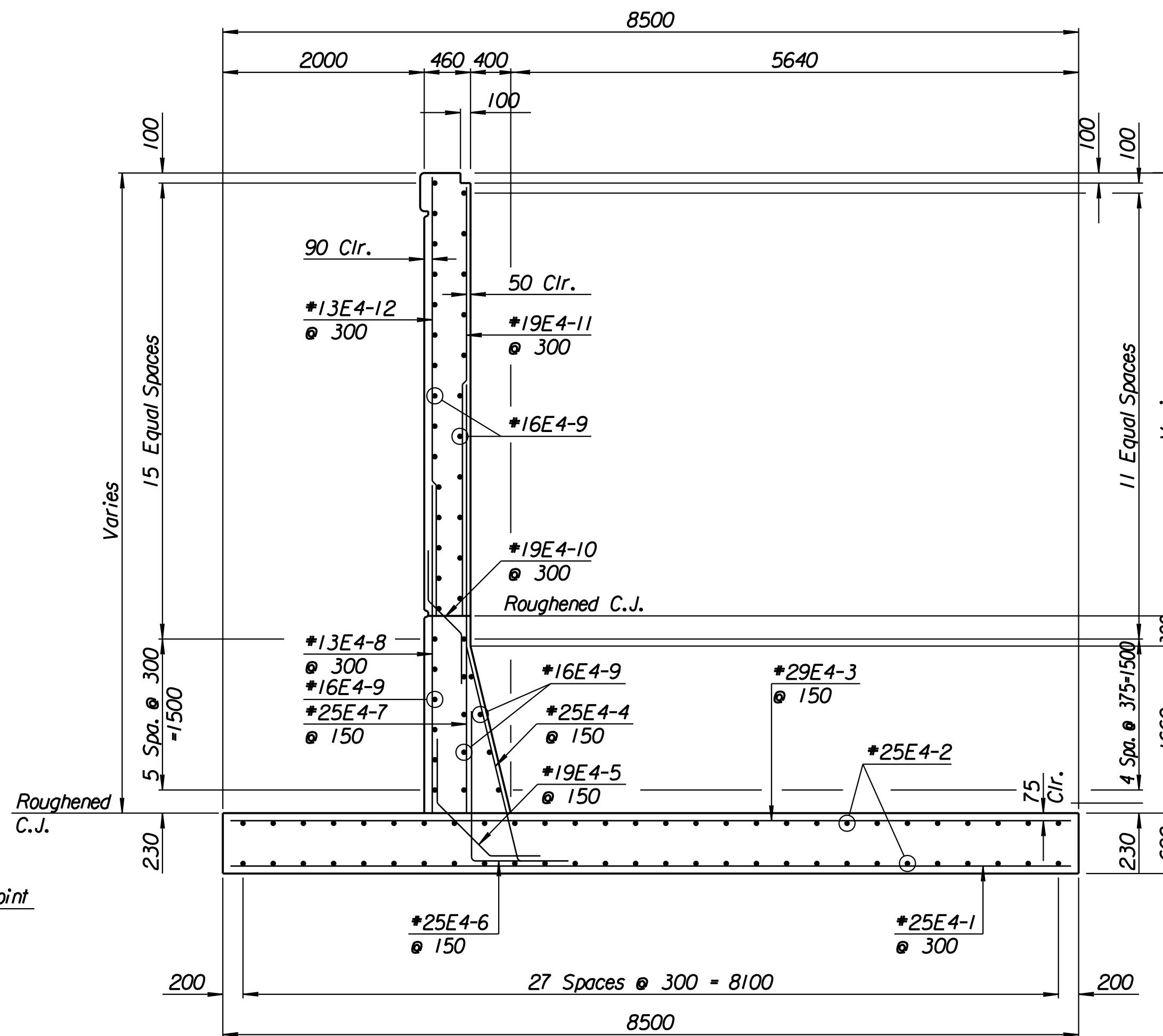
LAYOUT INFORMATION				
Point No.	North Coordinate	East Coordinate	Station	Offset
1	511333.982	491419.482	15+413.415	20.495 Rt.
2	511342.406	491418.348	15+413.415	11.995 Rt.
3	511346.415	491447.271	15+442.520	11.995 Rt.
4	511338.000	491448.471	15+442.520	20.495 Rt.

REINFORCING STEEL							
Straight Bars				Bent Bars			
Mark	Size	Number	Length	Mark	Size	Number	Length
E4-1	*25	195	8420	E4-4	*25	195	2810
E4-2	*25	112	15 540	E4-5	*19	195	2150
E4-3	*29	99	8420	E4-6	*25	195	1910
E4-7	*25	195	3810	E4-10	*19	99	1350
E4-8	*13	99	2960				
E4-9	*16	120	9650				
E4-11	*19	99	3900				
E4-12	*13	99	4000				

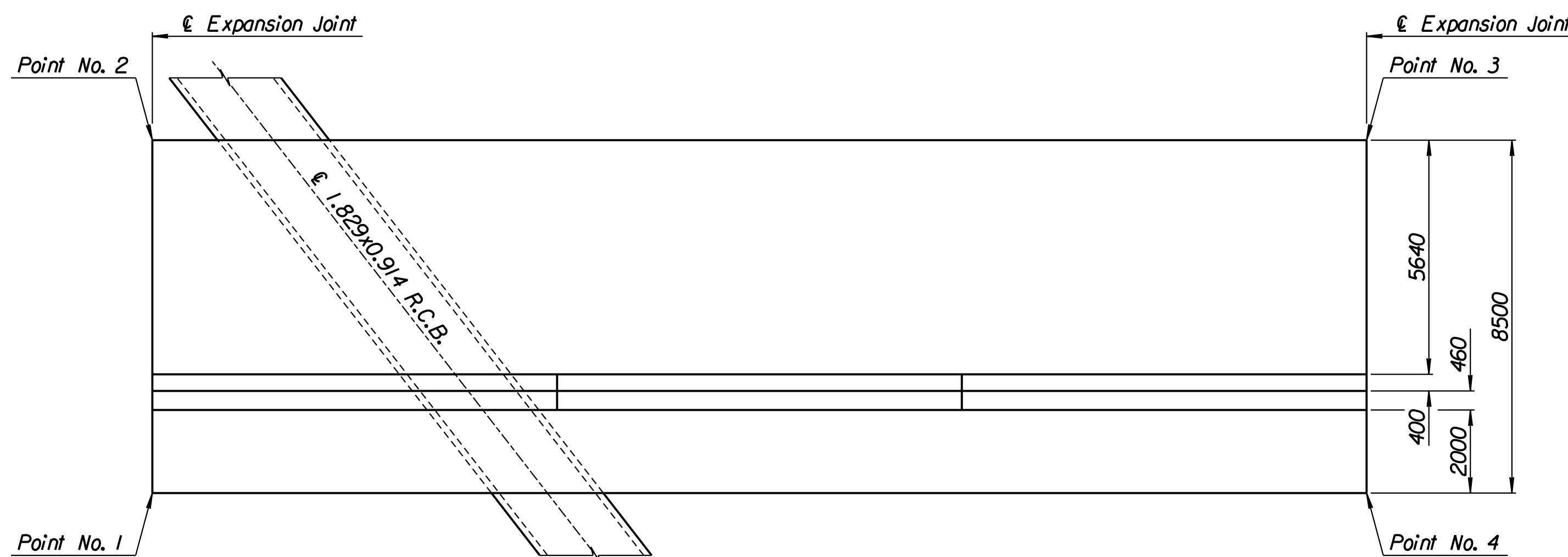
WALL QUANTITIES		
Item	Quantity	Unit
Concrete (Grade 30)(AE)	242.1	m ³
Reinforcing Steel (Grade 420)	28 845	kg
Class III Excavation	1725.0	m ³



ELEVATION

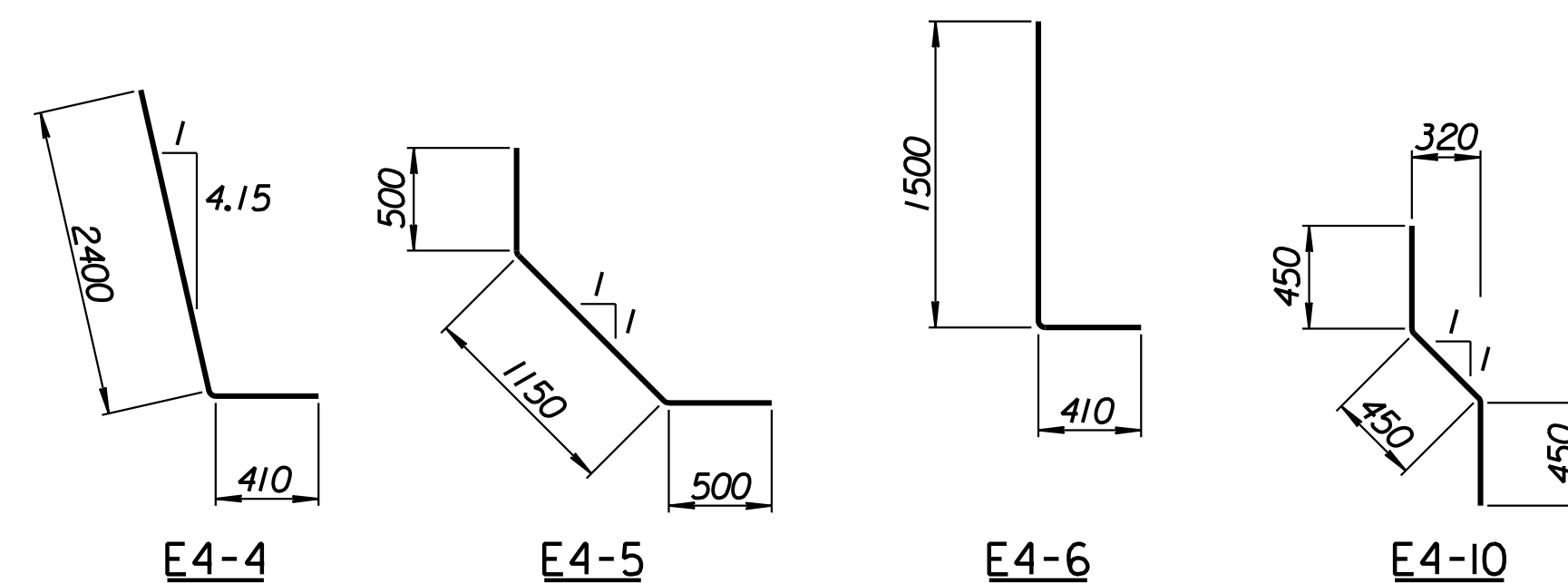


SECTION A-A



PLAN

Excavate to Elevation 400.0 and compact backfill.
See "Overexcavation and Compaction Detail" on Sheet No. 238.



BENDING DIAGRAMS
All dimensions are out to out of bars.

RECORD DRAWING

1			
No.	Revisions	By	Date
CITY OF WICHITA			
MAIZE SOUTHWEST WALL			
STA. 15+413.415 TO STA. 15+442.520			
SEDGWICK COUNTY			
Professional Engineering Consultants, P.A. 303 S. TOPEKA • WICHITA, KANSAS 67202 316-262-2691 • FAX 316-262-3003			
Designed by	P.D.F.	Checked by	R.A.S.
Drawn by	W.L.L.	Date	April 2002
		Job No.	97362

Drawn by: wil
 Plotted by: drp
 3-28-2002
 I:/1997/97362/As-Built/s/dgn/s/Vol 2/Sh 307-Maize-SWWall-8.dgn Last Rev: 8-22-07 By: gdr