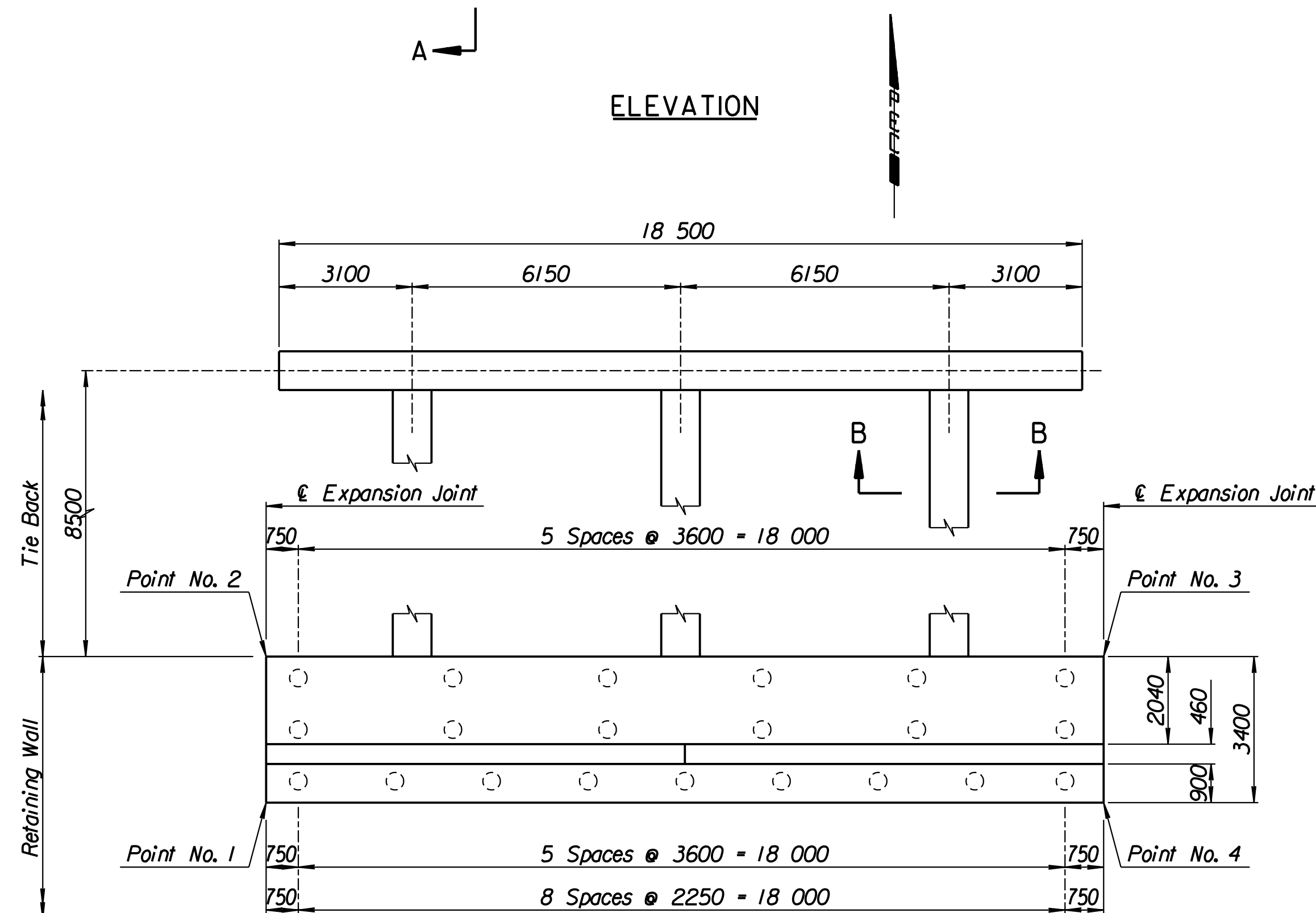
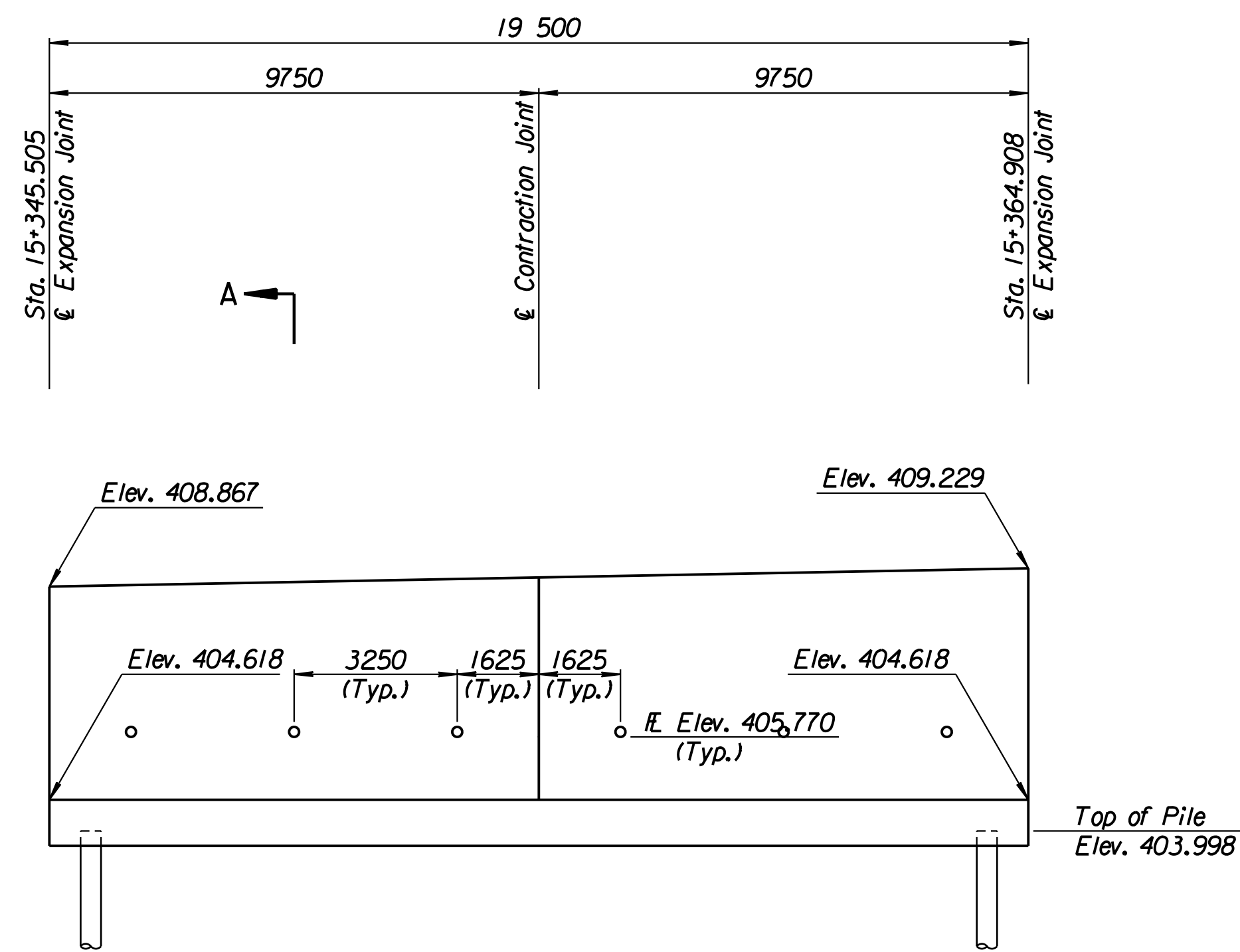


STATE	PROJECT NO.	YEAR	SHEET NO.	TOTAL SHEETS
KANSAS	54-87 K-6657-01	2002	310	1122

LAYOUT INFORMATION				
Point No.	North Coordinate	East Coordinate	Station	Offset
1	511326.586	491351.600	15+345.505	19.395 Rt.
2	511329.963	491351.208	15+345.505	15.995 Rt.
3	511332.259	491370.559	15+364.908	15.995 Rt.
4	511328.883	491370.969	15+364.908	19.395 Rt.

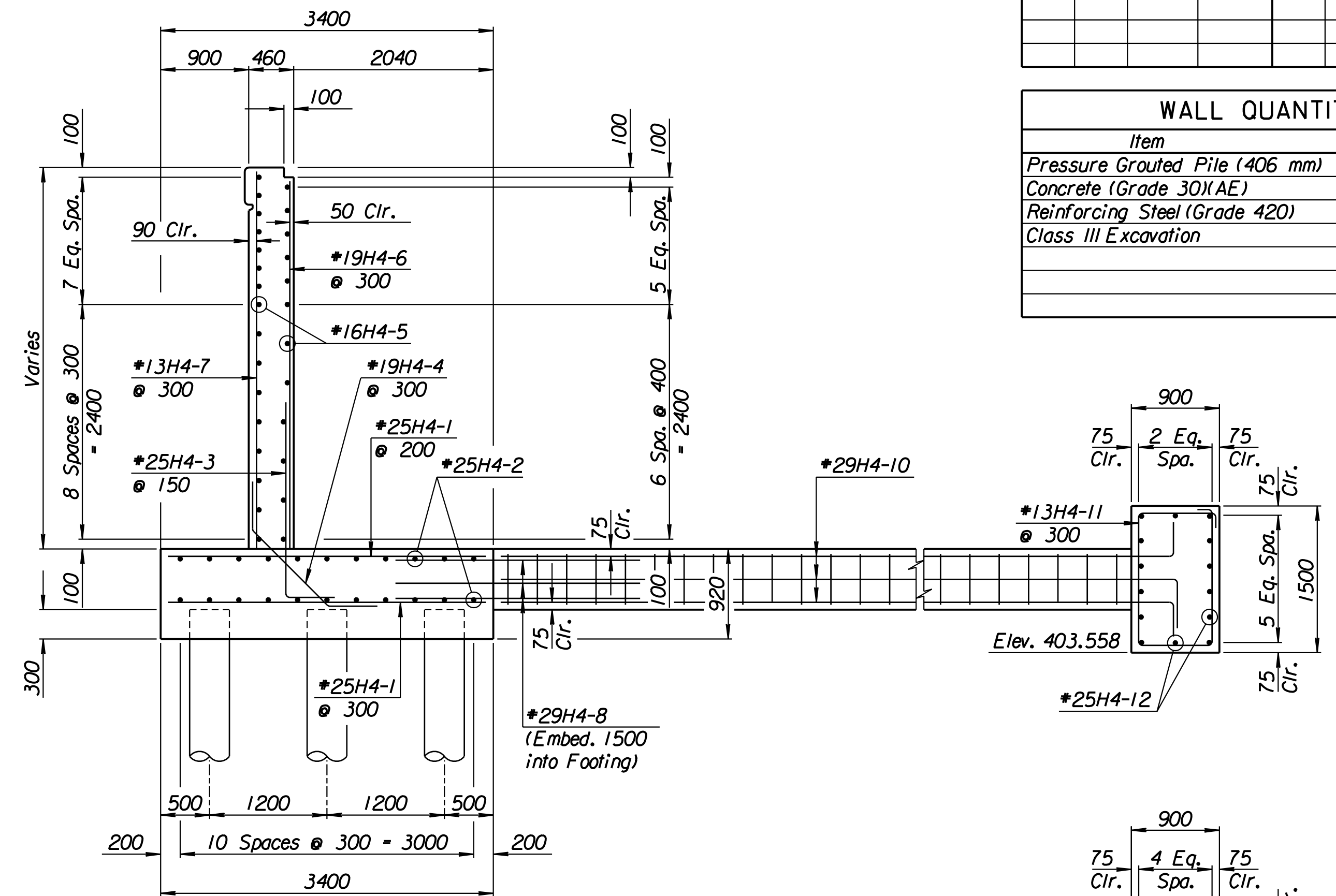
REINFORCING STEEL							
Straight Bars				Bent Bars			
Mark	Size	Number	Length	Mark	Size	Number	Length
H4-1	*25	164	3320	H4-3	*25	130	2780
H4-2	*25	44	10 670	H4-4	*19	66	1970
H4-5	*16	56	9650				
H4-6	*19	66	4100				
H4-7	*13	66	4560				
H4-8	*29	36	4000				

WALL QUANTITIES		
Item	Quantity	Unit
Pressure Grouted Pile (406 mm)	252.0	m
Concrete (Grade 30)(AE)	100.5	m ³
Reinforcing Steel (Grade 420)	8226	kg
Class III Excavation	116.4	m ³



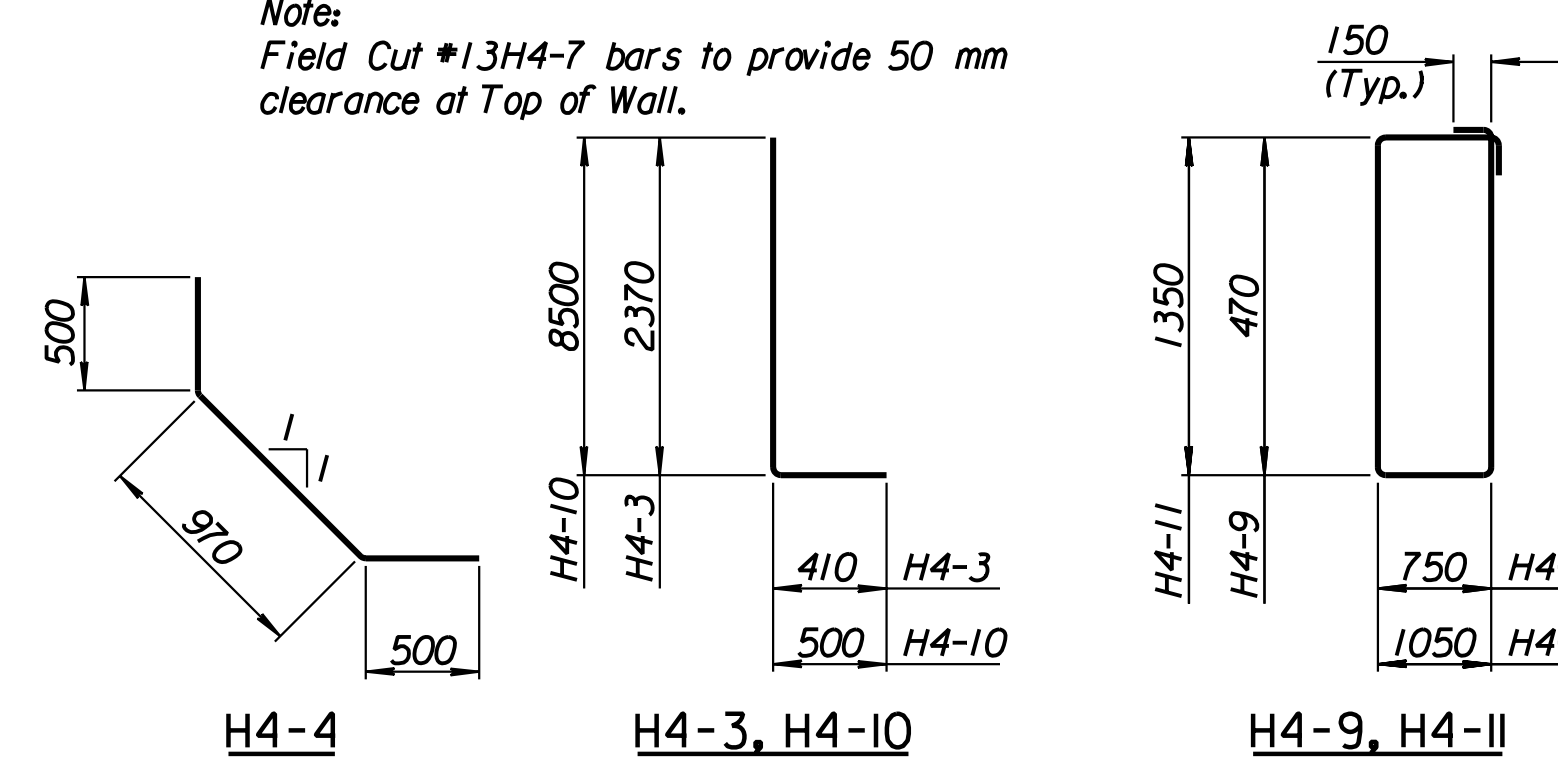
TIE BACK REINFORCING STEEL						
Straight Bars			Bent Bars			
Mark	Size	Number	Length	Mark	Length	
H4-12	*25	28	10 170	H4-9	*13	81
				H4-10	*29	36
				H4-11	*13	63

TIE BACK QUANTITIES		
Item	Quantity	Unit
Concrete (Grade 30)(AE)	38.5	m ³
Reinforcing Steel (Grade 420)	3273	kg



SECTION A-A

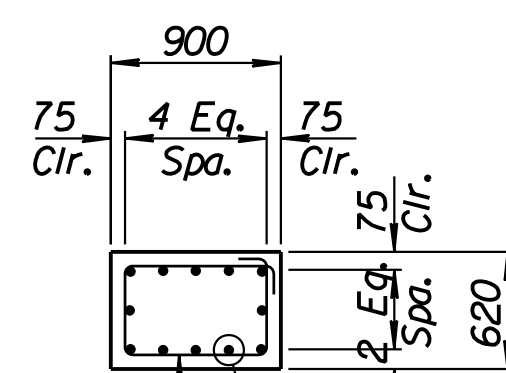
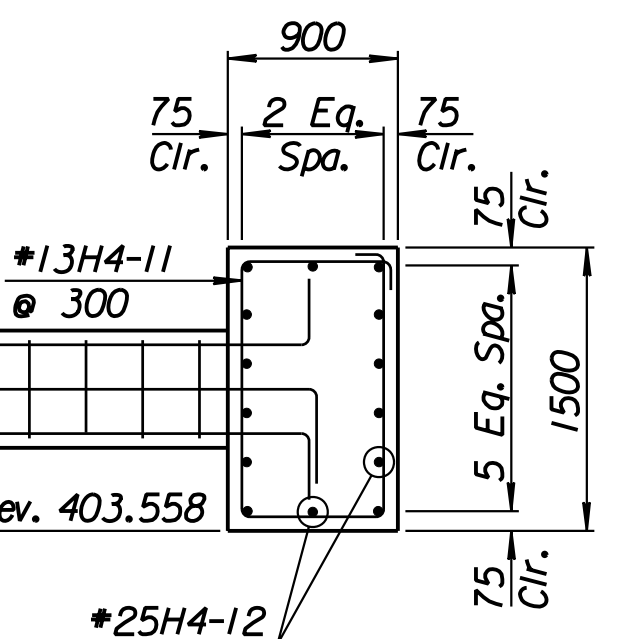
Note:
Field Cut #13H4-7 bars to provide 50 mm clearance at Top of Wall.



BENDING DIAGRAMS

All dimensions are out to out of bars.

RECORD DRAWING



SECTION B-B

1			
No.	Revisions	By	Date
CITY OF WICHITA			
MAIZE SOUTHWEST WALL			
STA. 15+345.505 TO STA. 15+364.908			
SEDGWICK COUNTY			
Professional Engineering Consultants, P.A. 303 S. TOPEKA • WICHITA, KANSAS 67202 316-262-2691 • FAX 316-262-3003			
Designed by	P.D.F.	Checked by	R.A.S.
Drawn by	W.L.L.	Date	Apr. 2002
		Job No.	97362

Drawn by: wil
 Plotted by: drp
 3-25-2002
 1:1997/97362/As-Built/s-dwg/s/Vol 2/Sh 310-Maize-SWWall-5.dgn Last Rev: 8-22-07 By: gdr