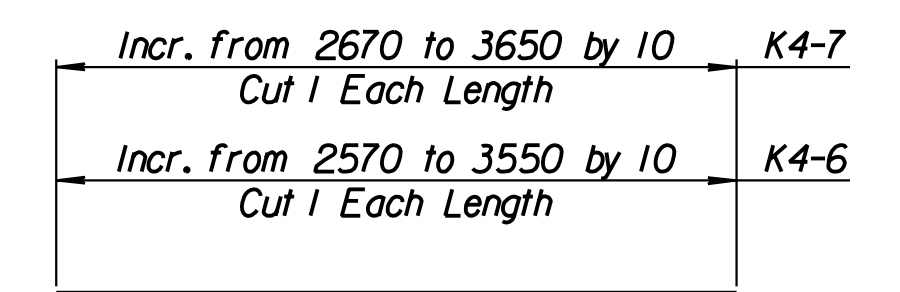
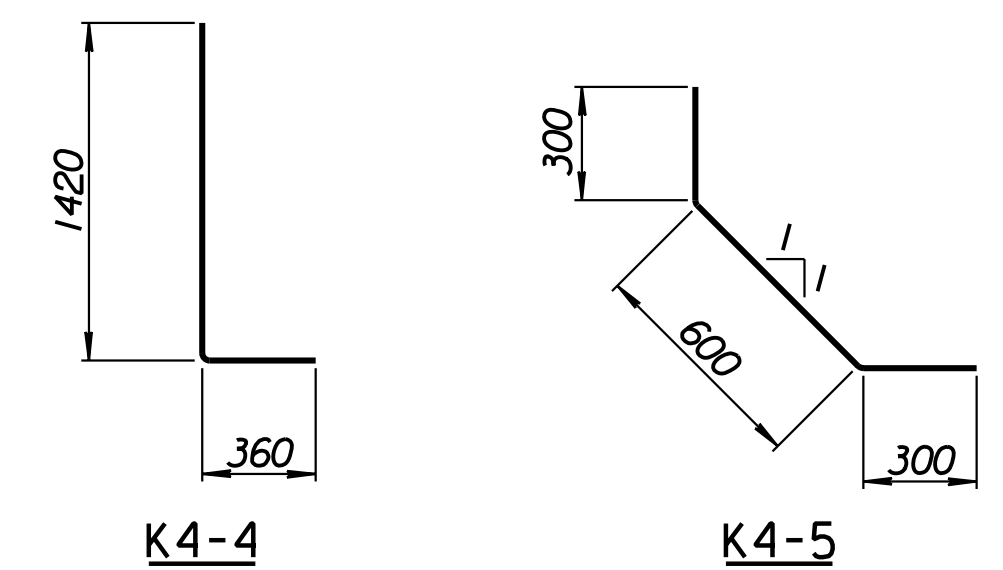


STATE	PROJECT NO.	YEAR	SHEET NO.	TOTAL SHEETS
KANSAS	54-87 K-6657-01	2002	3/2	1/22

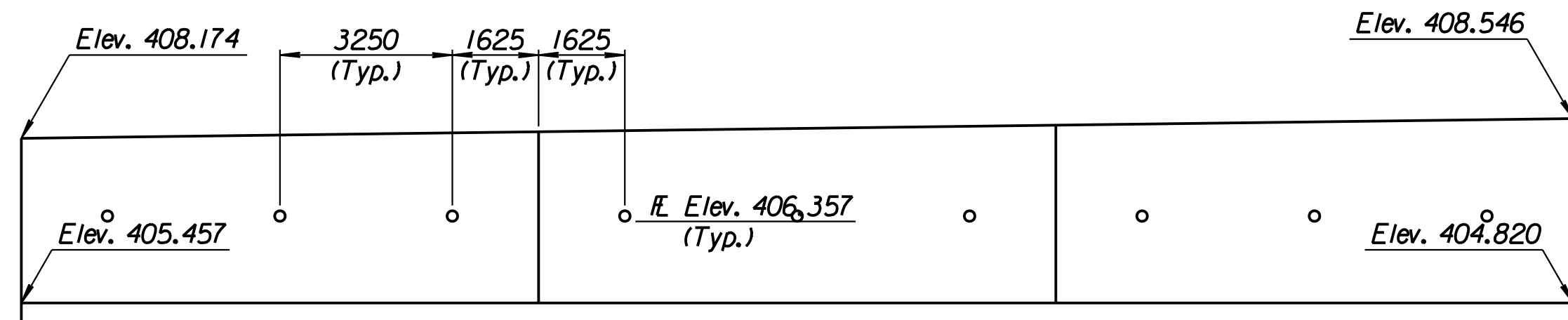
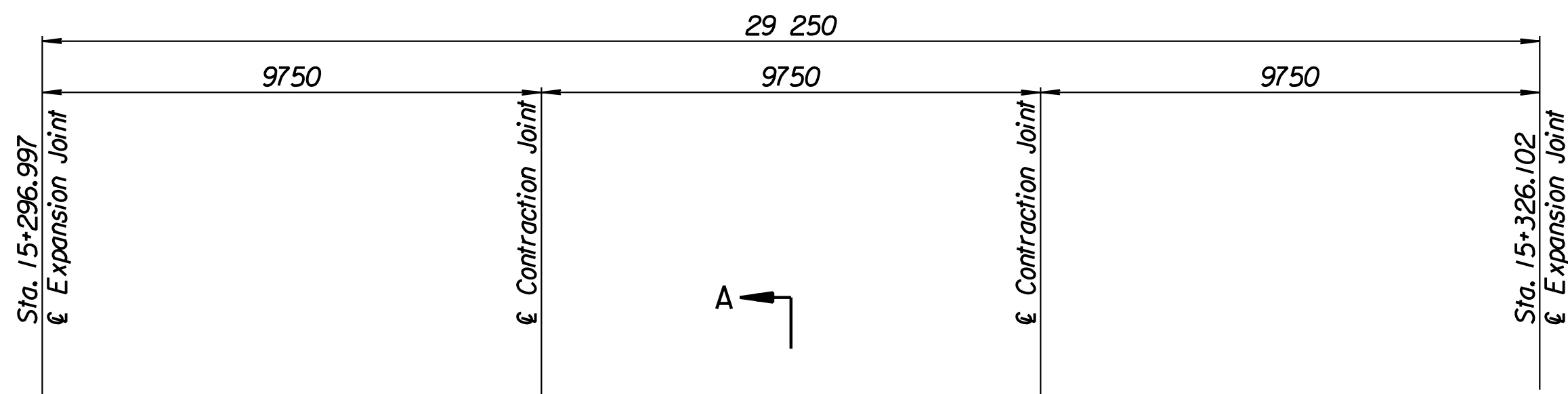
LAYOUT INFORMATION				
Point No.	North Coordinate	East Coordinate	Station	Offset
1	511321.286	491303.127	15+296.997	19.395 Rt.
2	511325.862	491302.657	15+296.997	14.795 Rt.
3	511328.962	491331.713	15+326.102	14.795 Rt.
4	511324.390	491332.219	15+326.102	19.395 Rt.

REINFORCING STEEL							
Straight Bars			Bent Bars				
Mark	Size	Number	Length	Mark	Size	Number	Length
K4-1	*16	99	4520	K4-4	*22	195	1780
K4-2	*22	147	4520	K4-5	*13	99	1200
K4-3	*13	60	14 960				
K4-6	*16	99	Varies				
K4-7	*13	99	Varies				
K4-8	*13	69	9650				

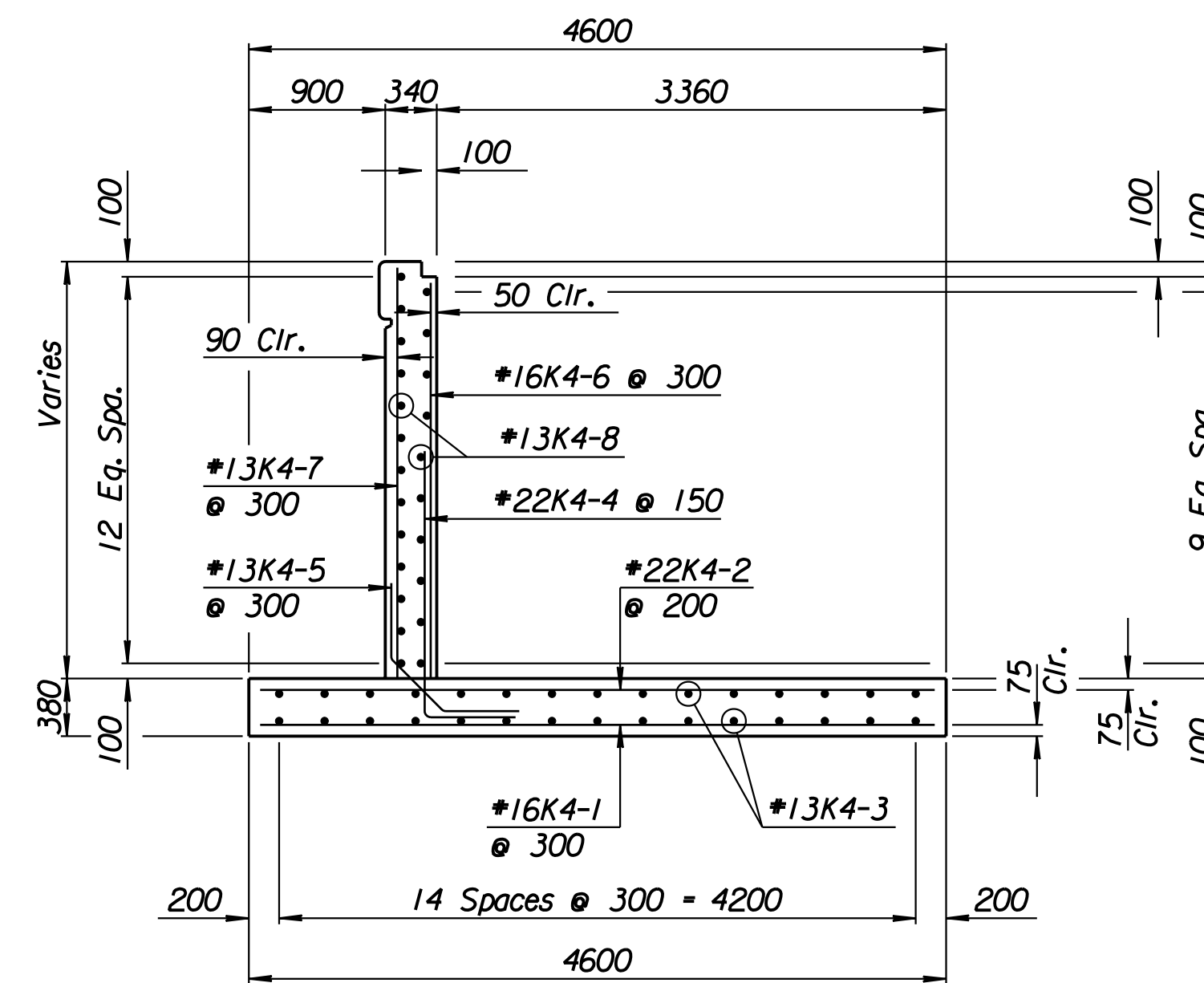
WALL QUANTITIES		
Item	Quantity	Unit
Concrete (Grade 30)(AE)	82.9	m ³
Reinforcing Steel (Grade 420)	6225	kg
Class III Excavation	220.9	m ³



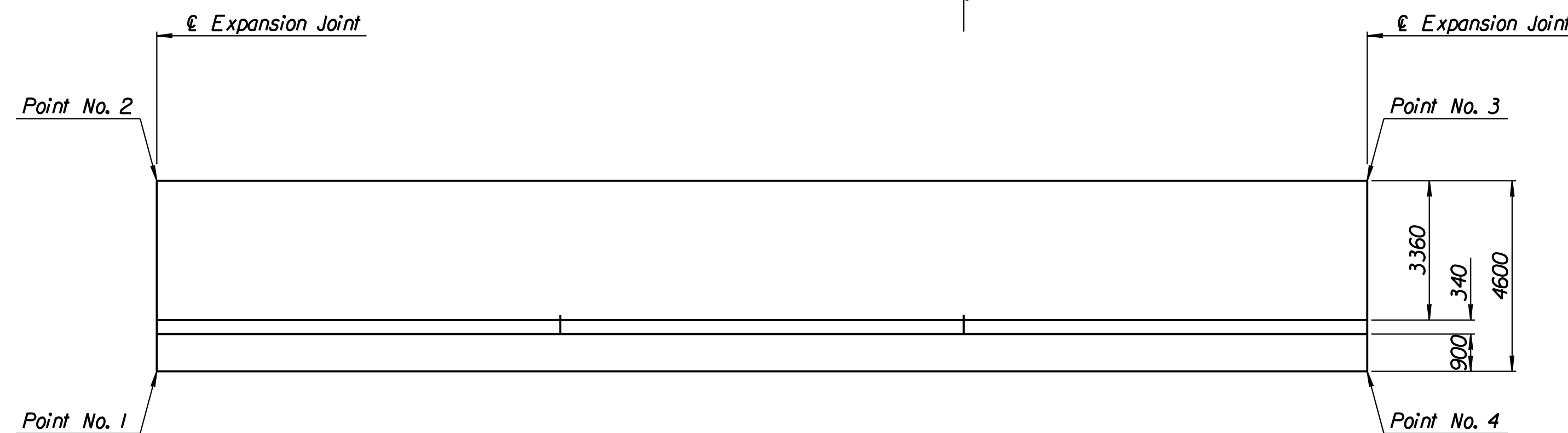
BENDING DIAGRAMS
All dimensions are out to out of bars.



ELEVATION



SECTION A-A



PLAN

Drawn by: wil
 Plotted by: drp
 3-25-2002
 I:/1997/97362/As-Built/s/dgn/s/Vol 2/Sh 3/12-Maize-SWWall-3.dgn
 Last Rev: 8-22-07 By: gdr

1			
No.	Revisions	By	Date
CITY OF WICHITA			
MAIZE SOUTHWEST WALL			
STA. 15+296.997 TO STA. 15+326.102			
SEDGWICK COUNTY			
Professional Engineering Consultants, P.A. <small>303 S. TOPEKA • WICHITA, KANSAS 67202 316-262-2691 • FAX 316-262-3003</small>			
Designed by	P.D.F.	Checked by	R.A.S.
Drawn by	W.L.L.	Date	Apr. 2002 Job No. 97362

RECORD DRAWING