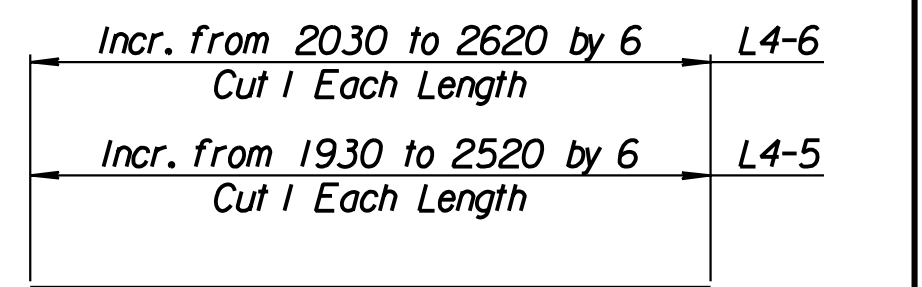
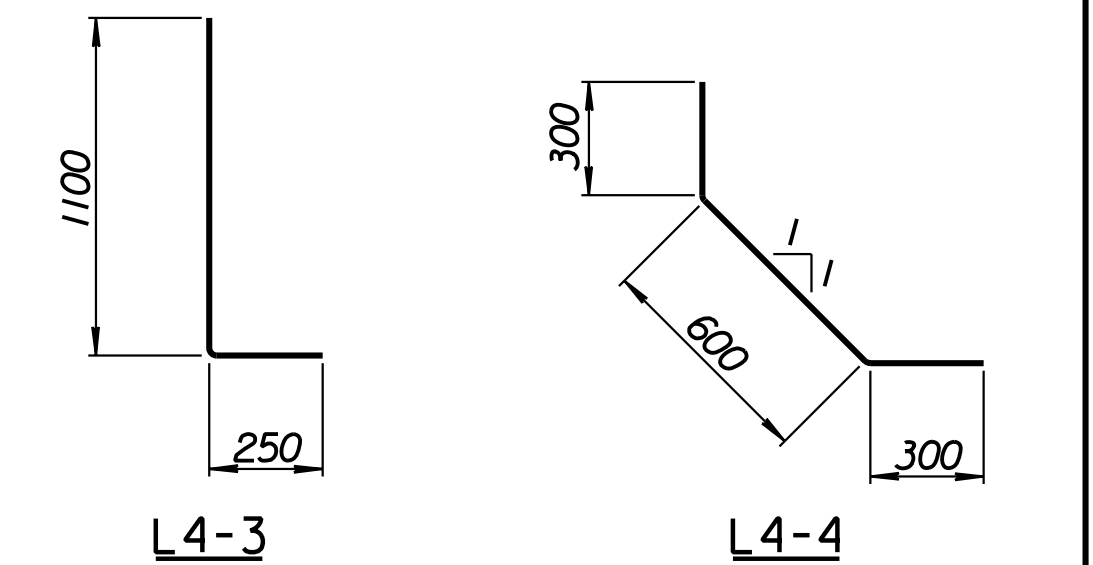


STATE	PROJECT NO.	YEAR	SHEET NO.	TOTAL SHEETS
KANSAS	54-87 K-6657-01	2002	313	1122

LAYOUT INFORMATION				
Point No.	North Coordinate	East Coordinate	Station	Offset
1	511318.411	491274.012	15+267.893	19.395 Rt.
2	511321.796	491273.691	15+267.893	15.995 Rt.
3	511324.668	491302.779	15+296.997	15.995 Rt.
4	511321.286	491303.127	15+296.997	19.395 Rt.

REINFORCING STEEL							
Straight Bars				Bent Bars			
Mark	Size	Number	Length	Mark	Size	Number	Length
L4-1	*16	246	3320	L4-3	*16	195	1350
L4-2	*13	44	14 960	L4-4	*13	99	1200
L4-5	*16	99	Varies				
L4-6	*13	99	Varies				
L4-7	*13	51	9650				

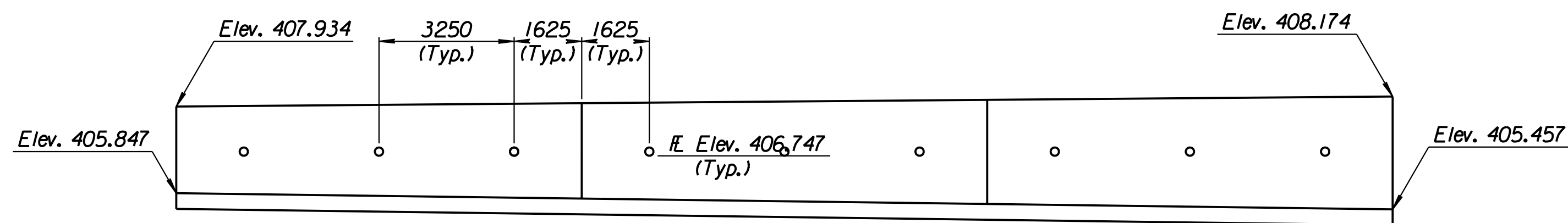
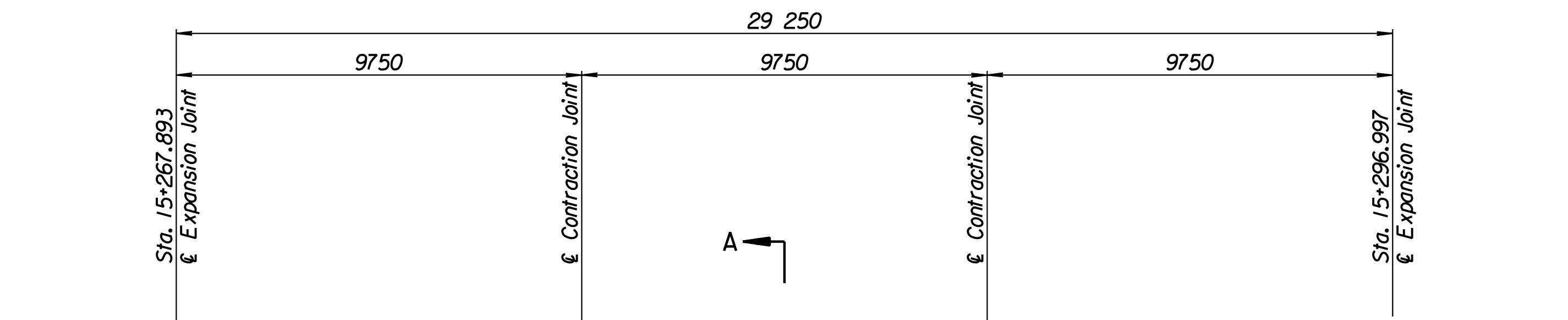
WALL QUANTITIES		
Item	Quantity	Unit
Concrete (Grade 30)(AE)	61.4	m <sup>3</sup>
Reinforcing Steel (Grade 420)	3508	kg
Class III Excavation	125.1	m <sup>3</sup>



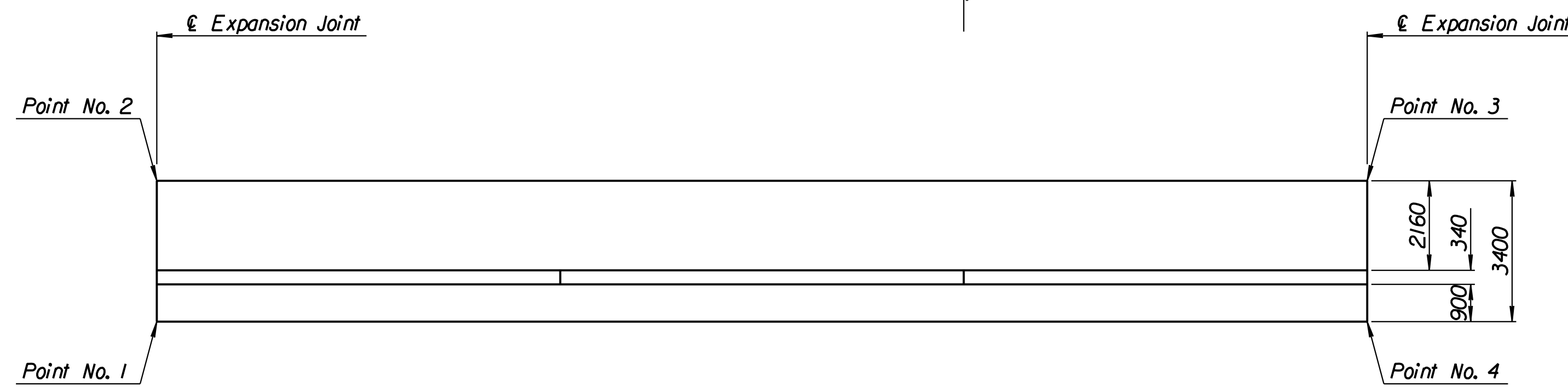
**BENDING DIAGRAMS**  
All dimensions are out to out of bars.

1			
No.	Revisions	By	Date
CITY OF WICHITA			
<b>MAIZE SOUTHWEST WALL</b>			
STA. 15+267.893 TO STA. 15+296.997			
SEDGWICK COUNTY			
<b>Professional Engineering Consultants, P.A.</b>			
<small>303 S. TOPEKA • WICHITA, KANSAS 67202 316-262-2691 • FAX 316-262-3003</small>			
Designed by	P.D.F.	Checked by	R.A.S.
Drawn by	W.L.L.	Date	Apr. 2002
		Job No.	97362

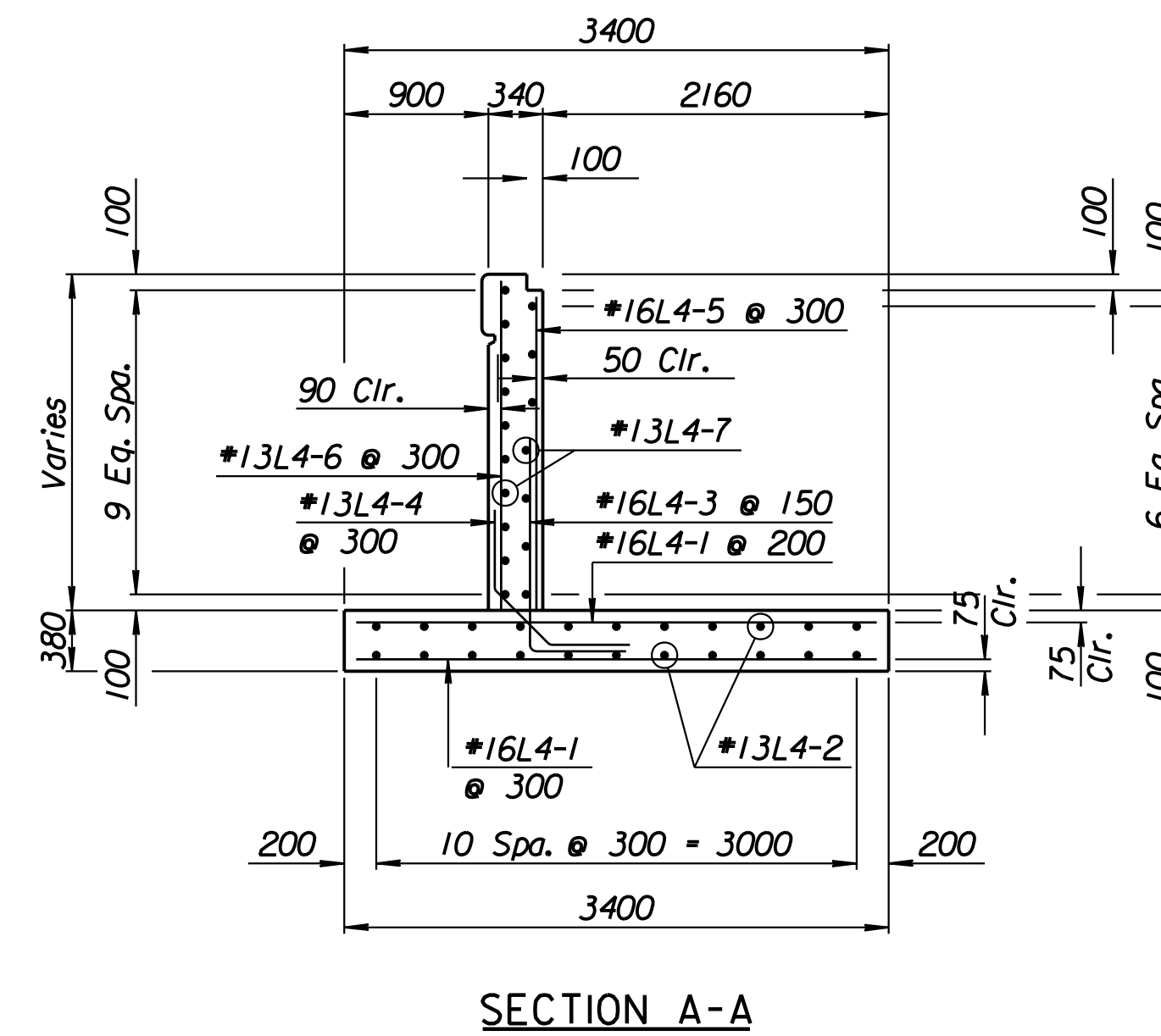
**RECORD DRAWING**



**ELEVATION**



**PLAN**



**SECTION A-A**

Drawn by: wil  
 Plotted by: drp  
 3-25-2002  
 I:/1997/97362/As-Built/s/dgn/s/Vol 2/Sh 313-Maize-SWWall-2.dgn Last Rev: 8-22-07 By: gdr