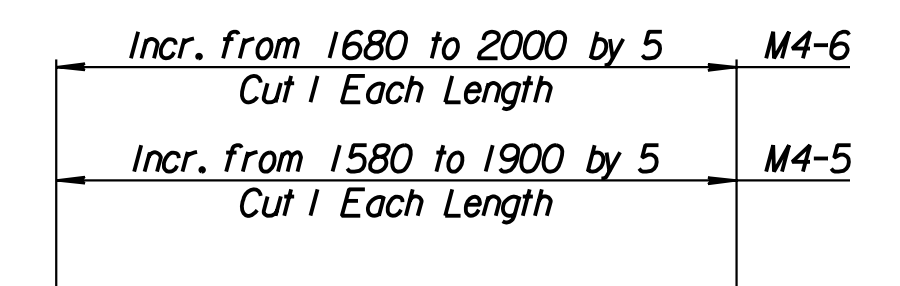
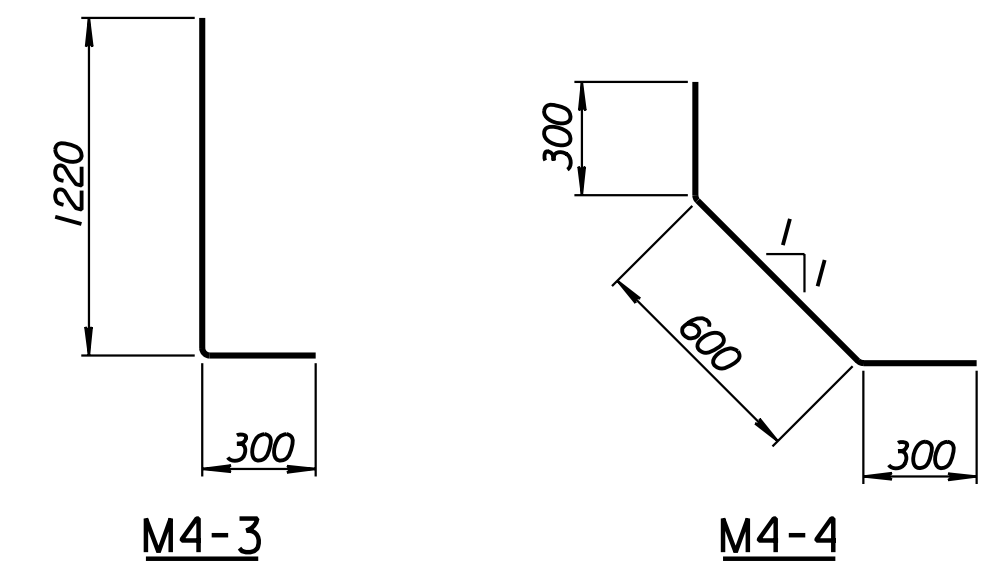
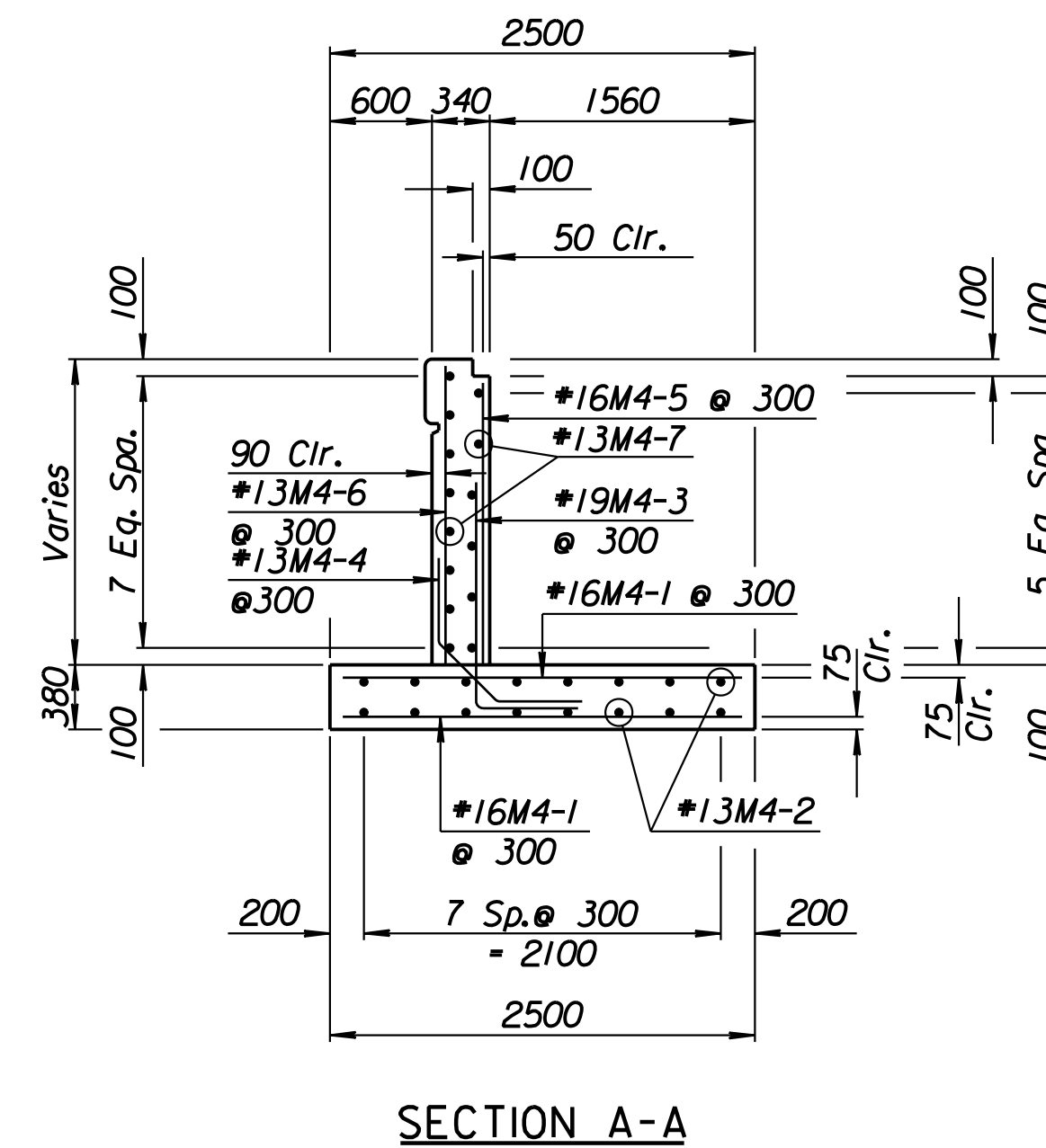
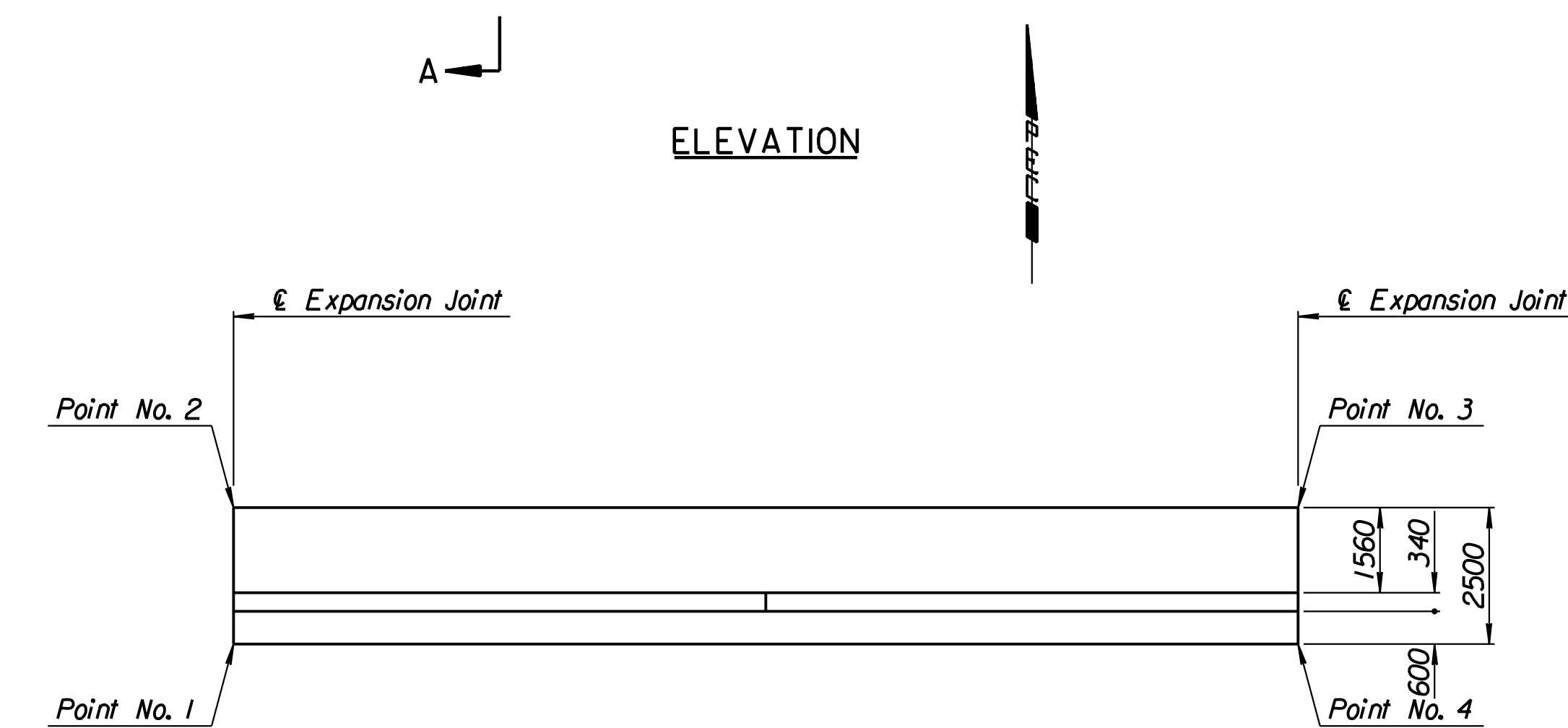
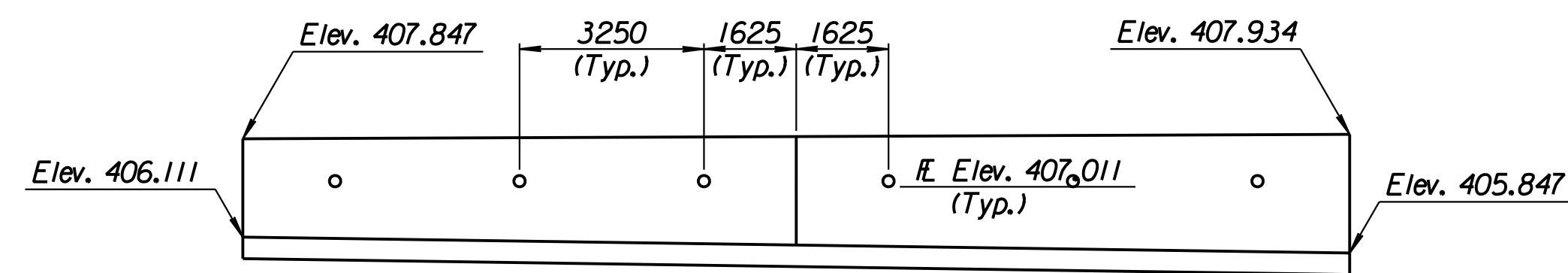
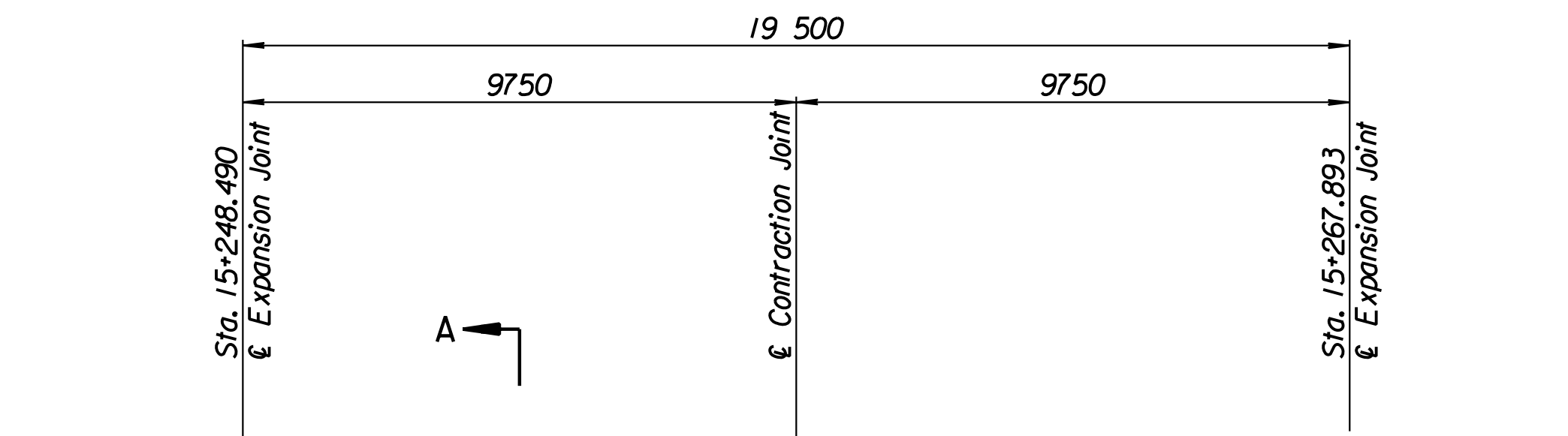


|        |                 |      |           |              |
|--------|-----------------|------|-----------|--------------|
| STATE  | PROJECT NO.     | YEAR | SHEET NO. | TOTAL SHEETS |
| KANSAS | 54-87 K-6657-01 | 2002 | 314       | 1122         |

| LAYOUT INFORMATION |                  |                 |            |            |
|--------------------|------------------|-----------------|------------|------------|
| Point No.          | North Coordinate | East Coordinate | Station    | Offset     |
| 1                  | 511316.921       | 491254.563      | 15+248.490 | 19.095 Rt. |
| 2                  | 511319.411       | 491254.340      | 15+248.490 | 16.595 Rt. |
| 3                  | 511321.199       | 491273.748      | 15+267.893 | 16.595 Rt. |
| 4                  | 511318.710       | 491273.983      | 15+267.893 | 19.095 Rt. |

| REINFORCING STEEL |      |        |        |           |      |        |        |
|-------------------|------|--------|--------|-----------|------|--------|--------|
| Straight Bars     |      |        |        | Bent Bars |      |        |        |
| Mark              | Size | Number | Length | Mark      | Size | Number | Length |
| M4-1              | *16  | 132    | 2420   | M4-3      | *19  | 66     | 1520   |
| M4-2              | *13  | 32     | 10100  | M4-4      | *13  | 66     | 1200   |
| M4-5              | *16  | 66     | Varies |           |      |        |        |
| M4-6              | *13  | 66     | Varies |           |      |        |        |
| M4-7              | *13  | 28     | 9650   |           |      |        |        |

| WALL QUANTITIES               |          |                |
|-------------------------------|----------|----------------|
| Item                          | Quantity | Unit           |
| Concrete (Grade 30)(AE)       | 31.0     | m <sup>3</sup> |
| Reinforcing Steel (Grade 420) | 1687     | kg             |
| Class III Excavation          | 46.6     | m <sup>3</sup> |



**BENDING DIAGRAMS**  
All dimensions are out to out of bars.

Drawn by: wil  
 Plotted by: drp  
 I:/1997/97362/As-Built/dgn/s/Vol 2/Sh 314-Maize-SWWall-1.dgn  
 Last Rev: 8-23-07 By: gdr

**PLAN**

**ELEVATION**

**SECTION A-A**

|   |           |            |                         |
|---|-----------|------------|-------------------------|
| 1   |           |            |                         |
| No.   | Revisions | By         | Date                    |
| CITY OF WICHITA   |           |            |                         |
| <b>MAIZE SOUTHWEST WALL</b>   |           |            |                         |
| STA. 15+248.490 TO STA. 15+267.893  |           |            |                         |
| SEDGWICK COUNTY   |           |            |                         |
| <b>Professional Engineering Consultants, P.A.</b><br>303 S. TOPEKA • WICHITA, KANSAS 67202<br>316-262-2691 • FAX 316-262-3003 |           |            |                         |
| Designed by   | P.D.F.    | Checked by | R.A.S.                  |
| Drawn by  | W.L.L.    | Date       | Apr. 2002 Job No. 97362 |

**RECORD DRAWING**