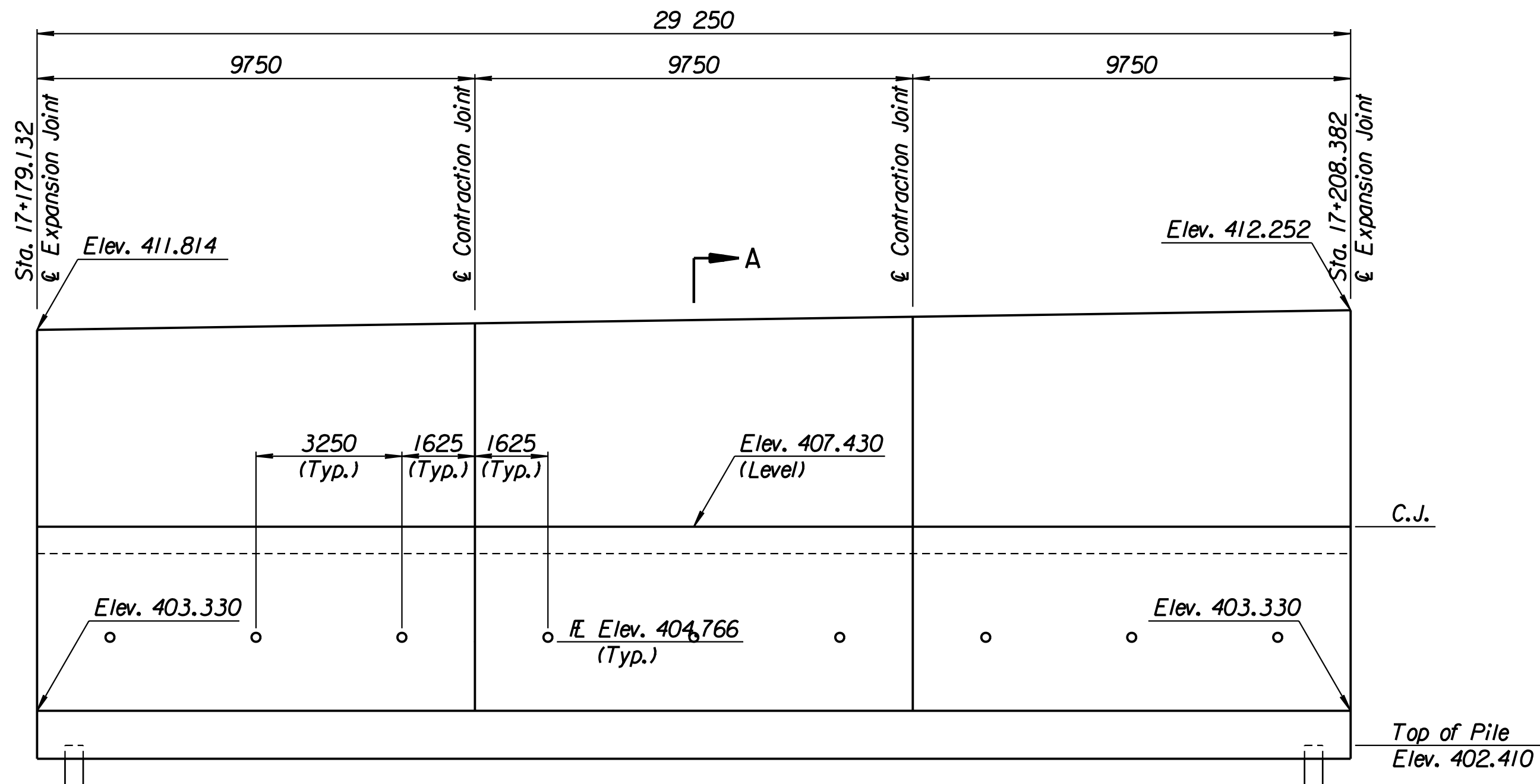


STATE	PROJECT NO.	YEAR	SHEET NO.	TOTAL SHEETS
KANSAS	54-87 K-6657-01	2002	318	1122

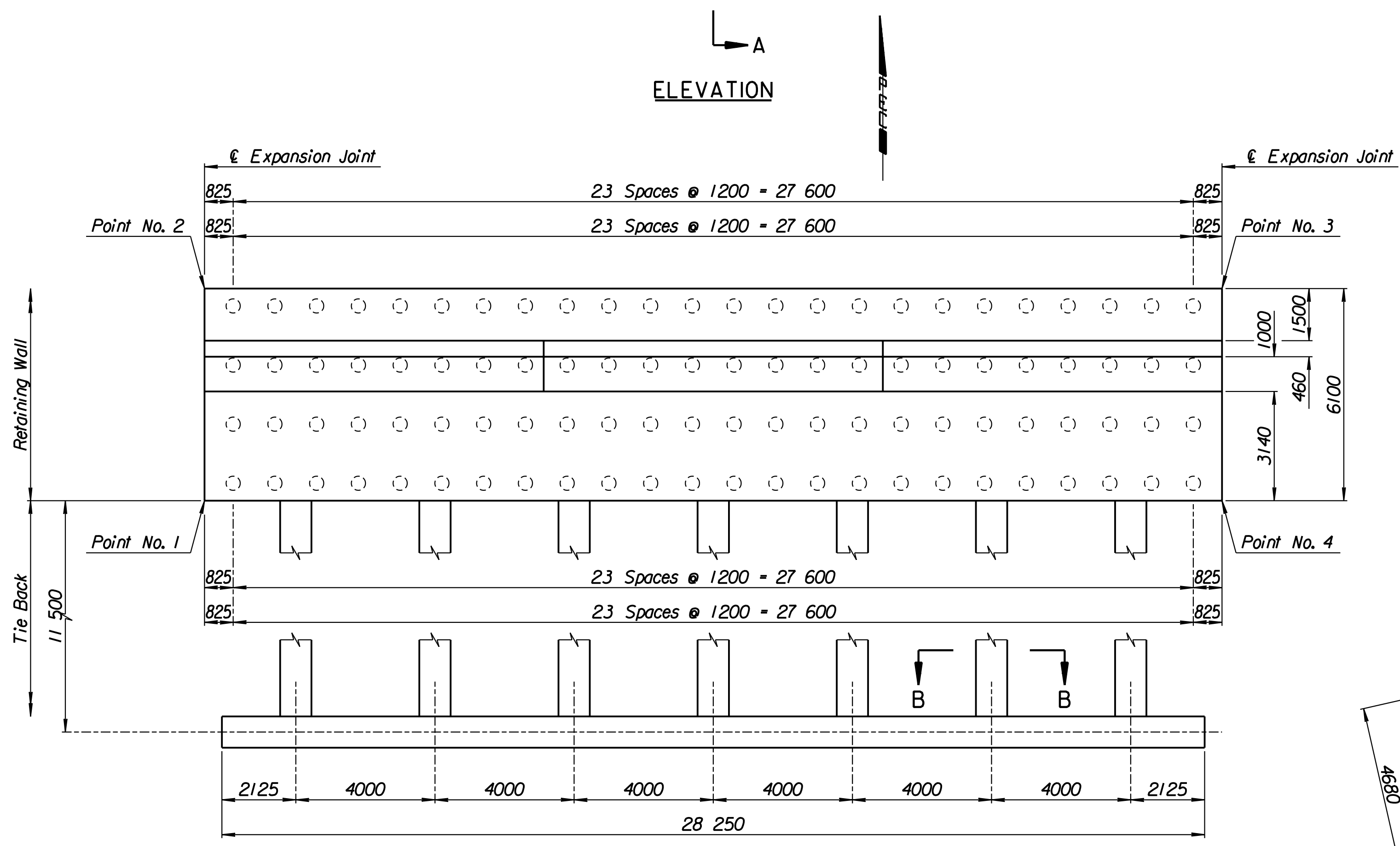
LAYOUT INFORMATION				
Point No.	North Coordinate	East Coordinate	Station	Offset
1	511952.773	493067.195	17+179.132	13.895 Lt.
2	511958.305	493064.626	17+179.132	19.995 Lt.
3	511970.627	493091.154	17+208.382	19.995 Lt.
4	511965.094	493093.723	17+208.382	13.895 Lt.

REINFORCING STEEL						
Straight Bars				Bent Bars		
Mark	Size	Number	Length	Mark	Size	Number
C5-1	*29	312	6020	C5-3	*29	195
C5-2	*25	80	15 540	C5-4	*22	195
C5-6	*32	195	6890	C5-5	*32	294
C5-7	*13	99	5150	C5-9	*19	99
C5-8	*16	195	9650			
C5-10	*19	99	4230			
C5-11	*13	99	4330			
C5-12	*29	84	4000			

WALL QUANTITIES		
Item	Quantity	Unit
Pressure Grouted Pile (406 mm)	1152.0	m
Concrete (Grade 30)(AE)	385.7	m ³
Reinforcing Steel (Grade 420)	42 606	kg
Class III Excavation	369.2	m ³

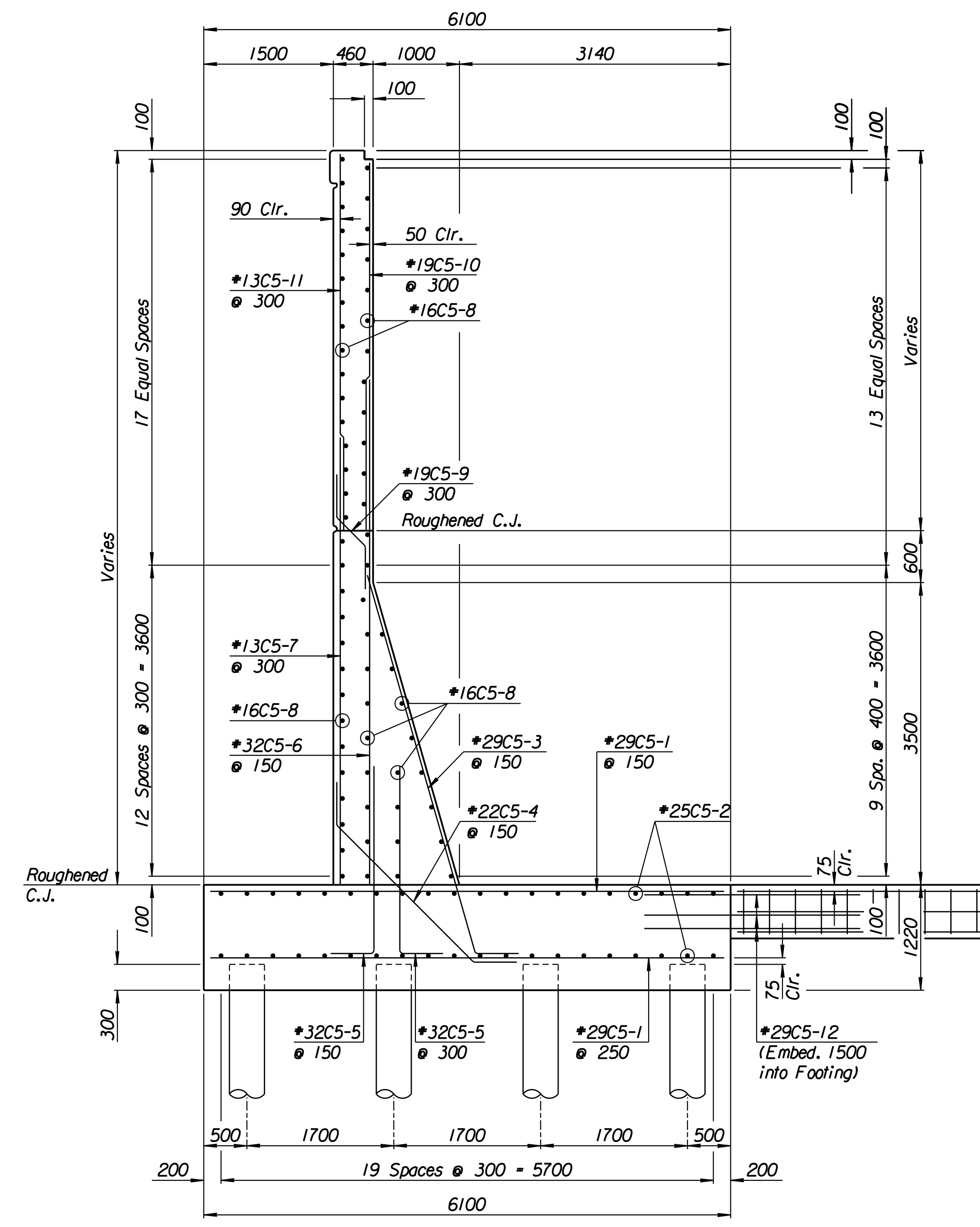


ELEVATION

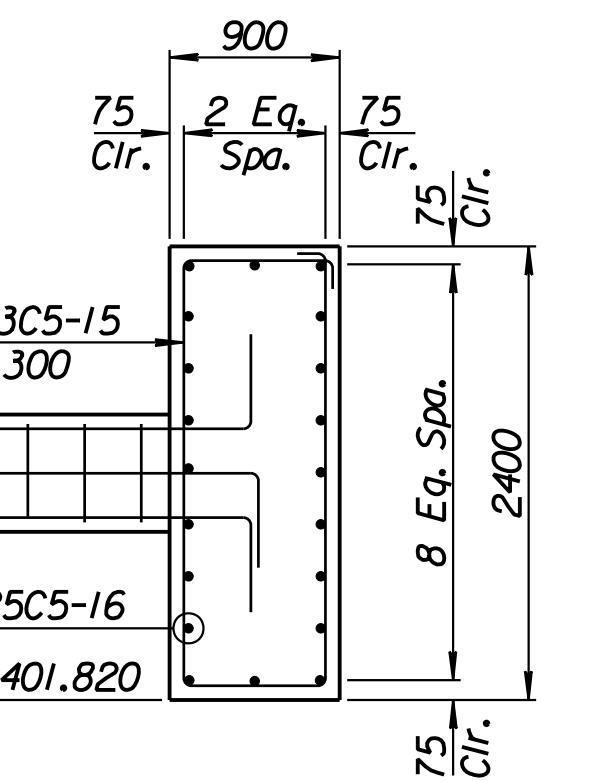


TIE BACK REINFORCING STEEL					
Straight Bars			Bent Bars		
Mark	Size	Number	Length	Mark	Size
C5-16	*25	40	15 040	C5-13	*13
				C5-14	*29
				C5-15	*13

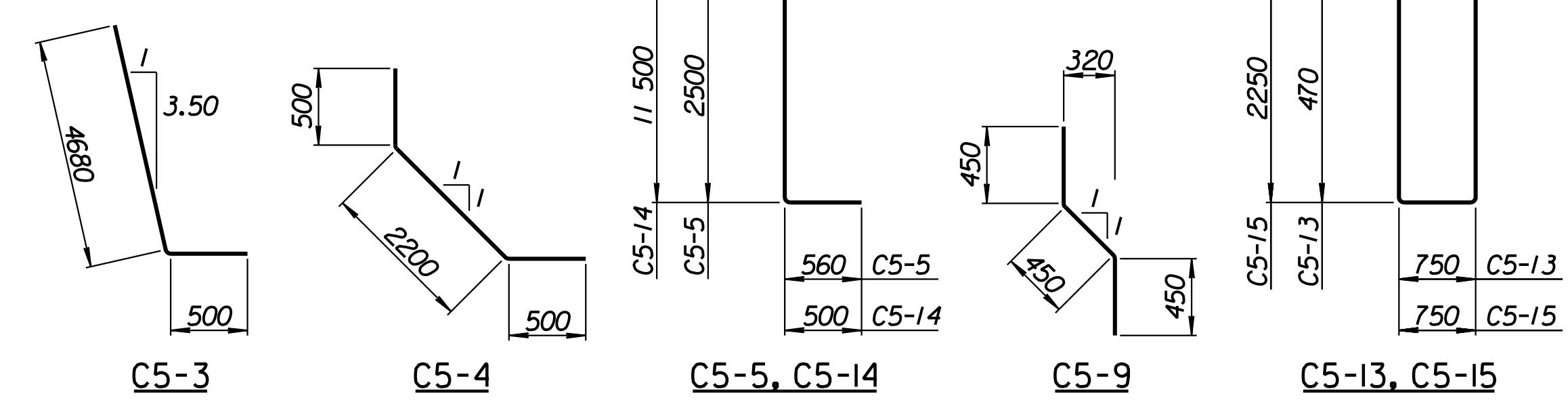
TIE BACK QUANTITIES		
Item	Quantity	Unit
Concrete (Grade 30)(AE)	104.2	m ³
Reinforcing Steel (Grade 420)	8785	kg



SECTION A-A



SECTION B-B



BENDING DIAGRAMS
All dimensions are out to out of bars.

RECORD DRAWING

1			
No.	Revisions	By	Date
CITY OF WICHITA			
TYLER NORTHWEST WALL			
STA. 17+179.132 TO STA. 17+208.382			
SEDGWICK COUNTY			
Professional Engineering Consultants, P.A.			
303 S. TOPEKA • WICHITA, KANSAS 67202			
316-262-2691 • FAX 316-262-3003			
Designed by	P.D.F.	Checked by	R.A.S.
Drawn by	W.L.L.	Date	April 11, 2002
		Job No.	97362

Drawn by: wil
 Plotted by: drp
 4-11-2002
 L:\1997\97362\As-Built\As-Built.dgn Vol 2/Sh 318-Tyler-NWwall-3.dgn Last Rev: B-23-07 By: gdr