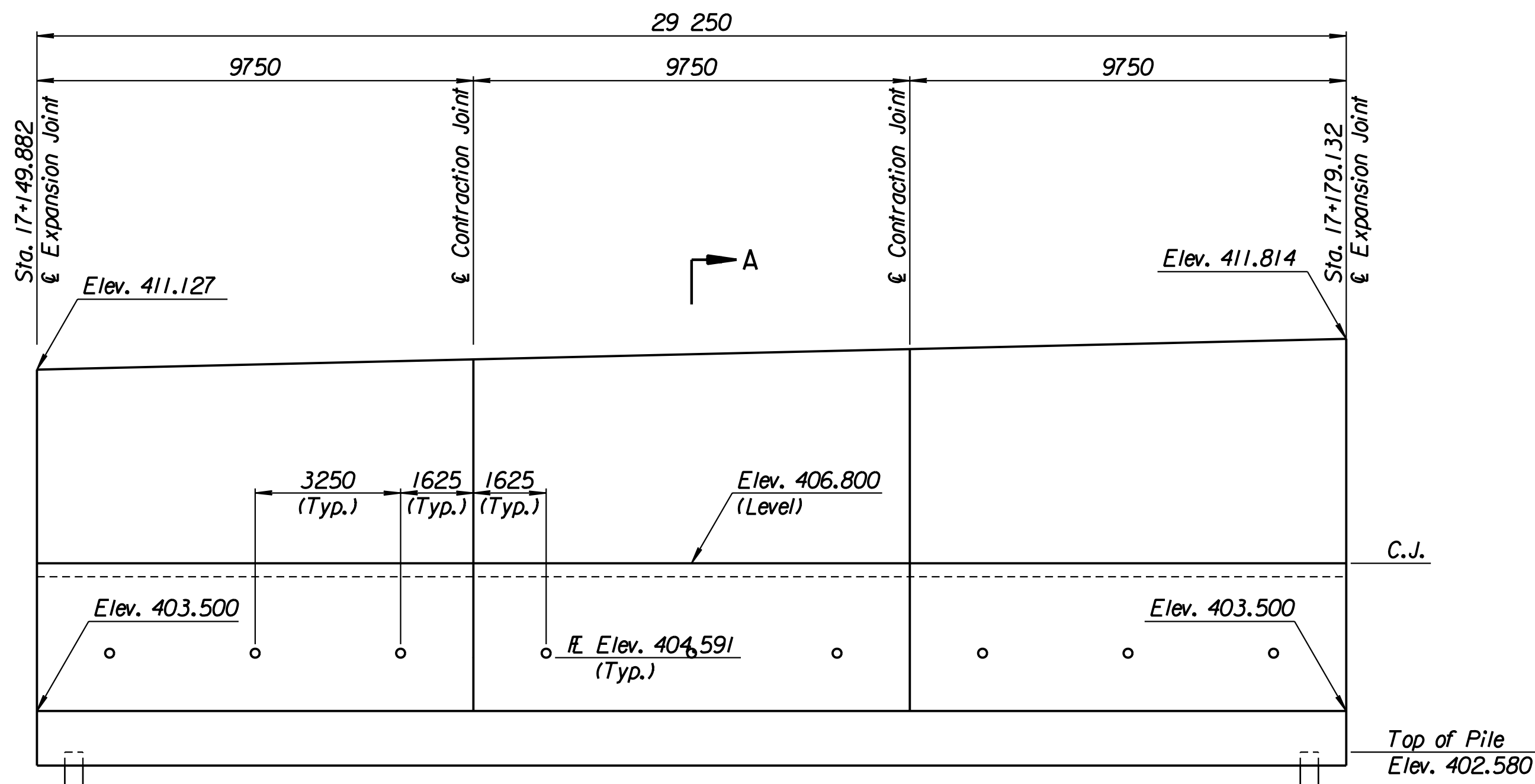


STATE	PROJECT NO.	YEAR	SHEET NO.	TOTAL SHEETS
KANSAS	54-87 K-6657-01	2002	3/9	11/22

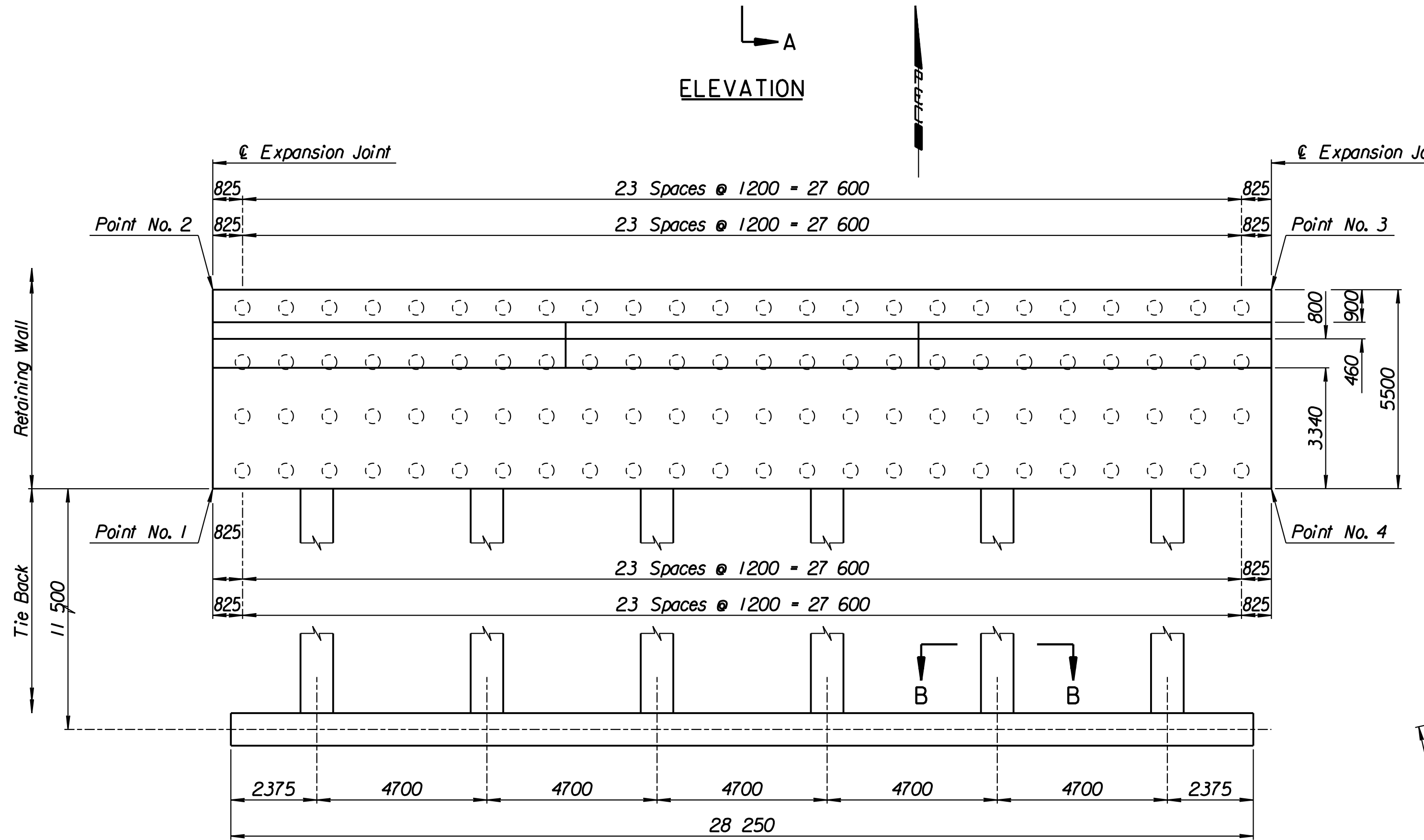
LAYOUT INFORMATION				
Point No.	North Coordinate	East Coordinate	Station	Offset
1	511940.451	493040.667	17+149.882	13.895 Lt.
2	511945.439	493038.350	17+149.882	19.395 Lt.
3	511957.761	493064.878	17+179.132	19.395 Lt.
4	511952.773	493067.195	17+179.132	13.895 Lt.

REINFORCING STEEL							
Straight Bars				Bent Bars			
Mark	Size	Number	Length	Mark	Size	Number	Length
D5-1	*29	312	5420	D5-3	*29	195	4630
D5-2	*25	72	15 540	D5-4	*22	195	2830
D5-6	*32	195	6330	D5-5	*32	195	3060
D5-7	*13	99	4600	D5-9	*19	99	1350
D5-8	*16	171	9650				
D5-10	*19	99	4180				
D5-11	*13	99	4280				
D5-12	*29	72	4000				

WALL QUANTITIES		
Item	Quantity	Unit
Pressure Grouted Pile (406 mm)	1152.0	m
Concrete (Grade 30)(AE)	338.3	m <sup>3</sup>
Reinforcing Steel (Grade 420)	37 091	kg
Class III Excavation	242.6	m <sup>3</sup>

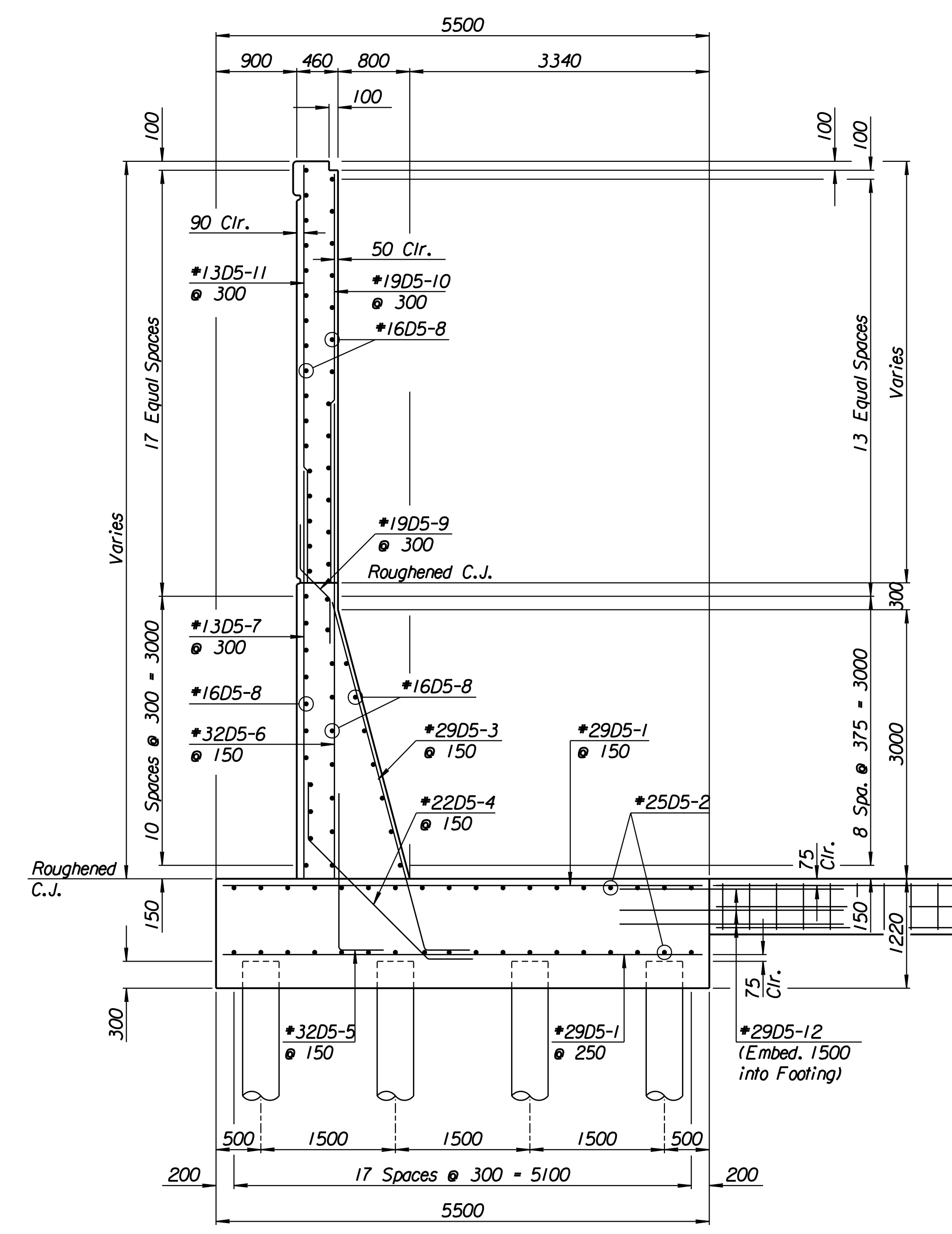


ELEVATION

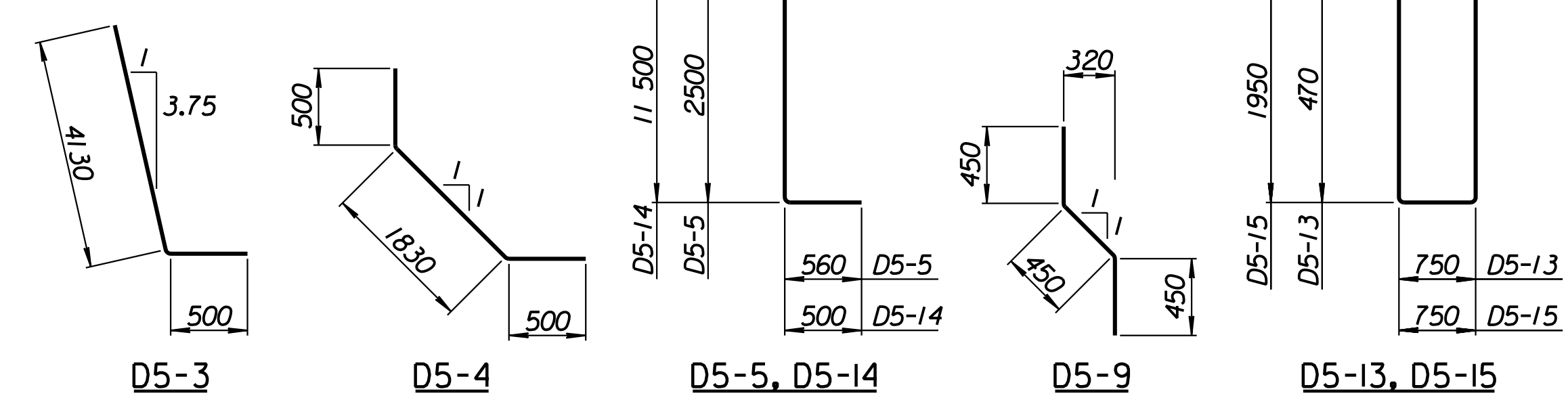


TIE BACK REINFORCING STEEL							
Straight Bars				Bent Bars			
Mark	Size	Number	Length	Mark	Size	Number	Length
D5-16	*25	36	15 040	D5-13	*13	222	2740
				D5-14	*29	72	12 000
				D5-15	*13	94	5700

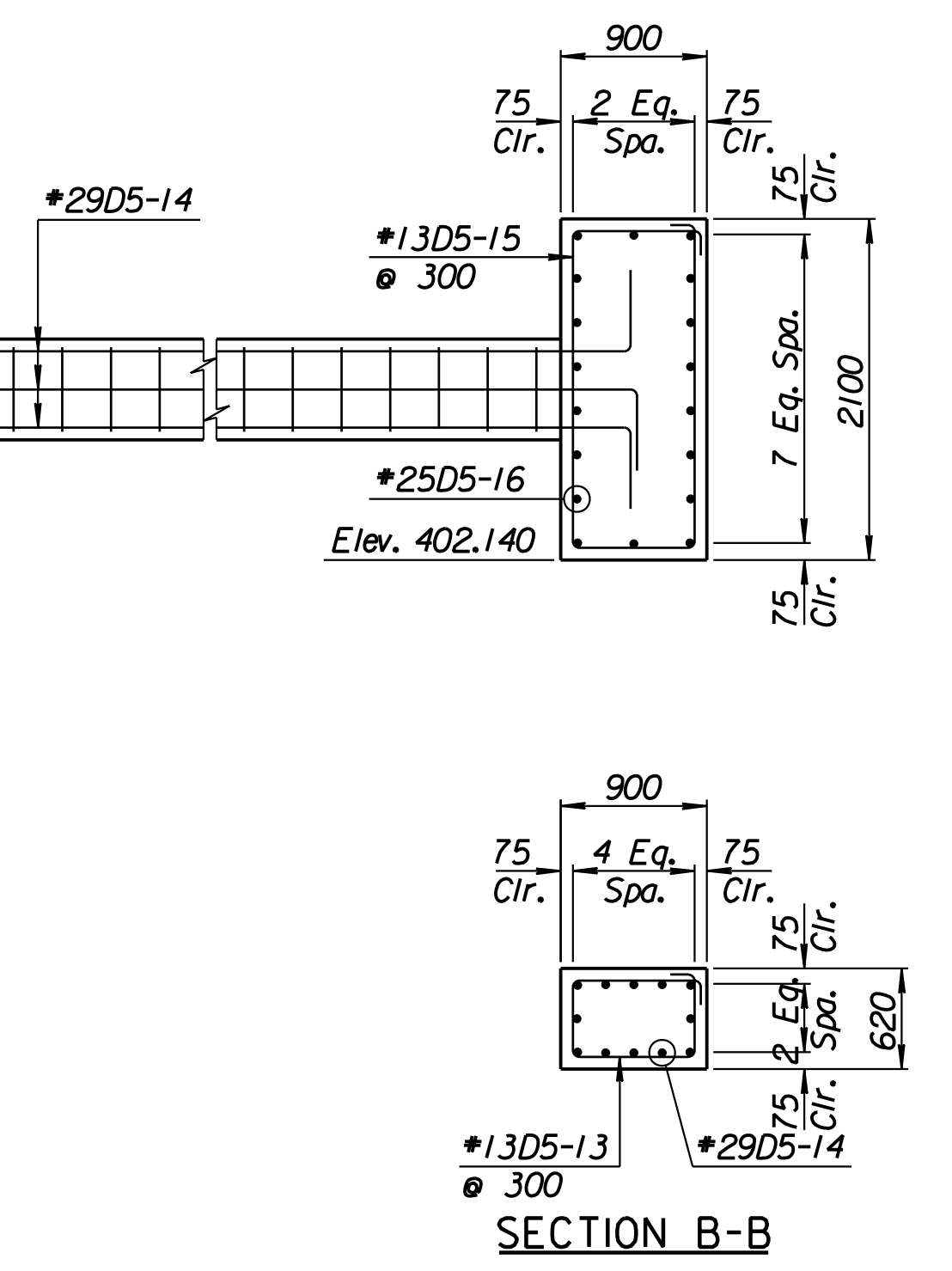
TIE BACK QUANTITIES		
Item	Quantity	Unit
Concrete (Grade 30)(AE)	90.4	m <sup>3</sup>
Reinforcing Steel (Grade 420)	7660	kg



SECTION A-A



BENDING DIAGRAMS  
All dimensions are out to out of bars.



SECTION B-B

1			
No.	Revisions	By	Date
CITY OF WICHITA			
<b>TYLER NORTHWEST WALL</b>			
STA. 17+149.882 TO STA. 17+179.132			
SEDGWICK COUNTY			
Professional Engineering Consultants, P.A.			
303 S. TOPEKA • WICHITA, KANSAS 67202			
316-262-2691 • FAX 316-262-3003			
Designed by	P.D.F.	Checked by	R.A.S.
Drawn by	W.L.L.	Date	April, 2002
		Job No.	97362

RECORD DRAWING

Drawn by: wil  
 Plotted by: drp  
 4-11-2002  
 I:\1997\97362\As-Built\As-Built\NWWall-4.dgn Last Rev: 8-23-07 By: gdr