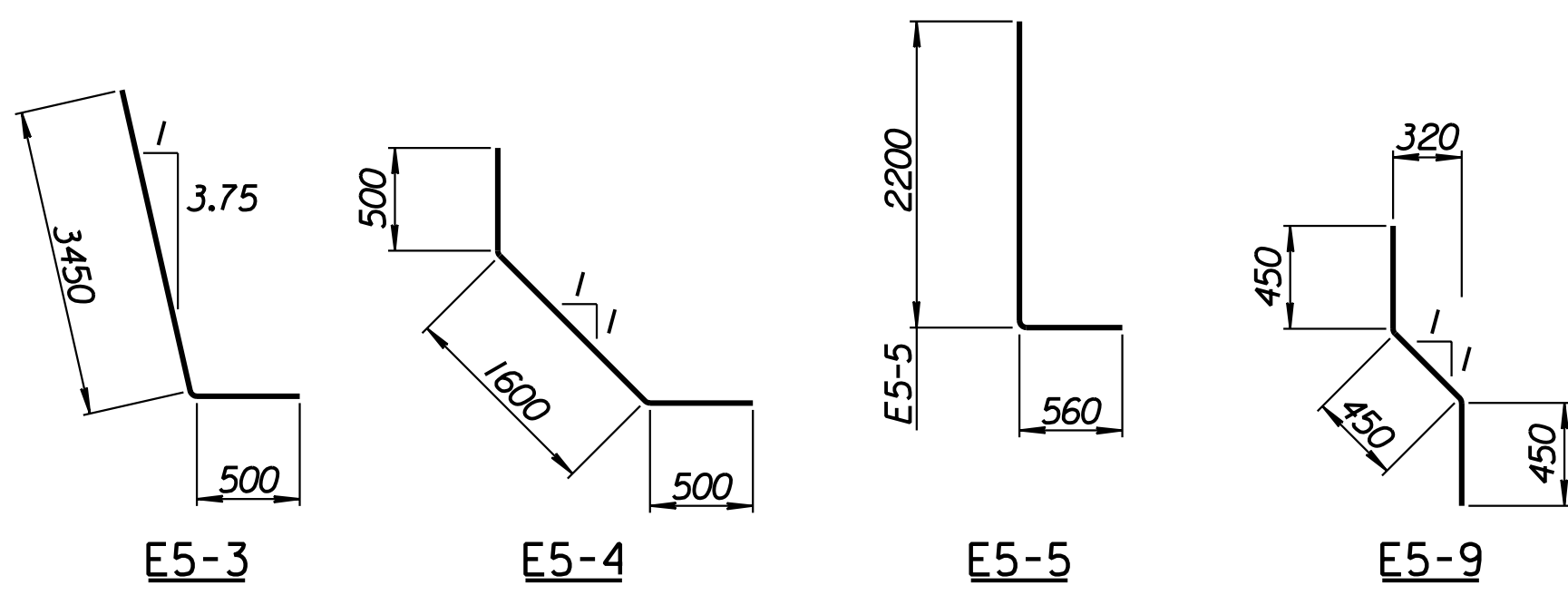
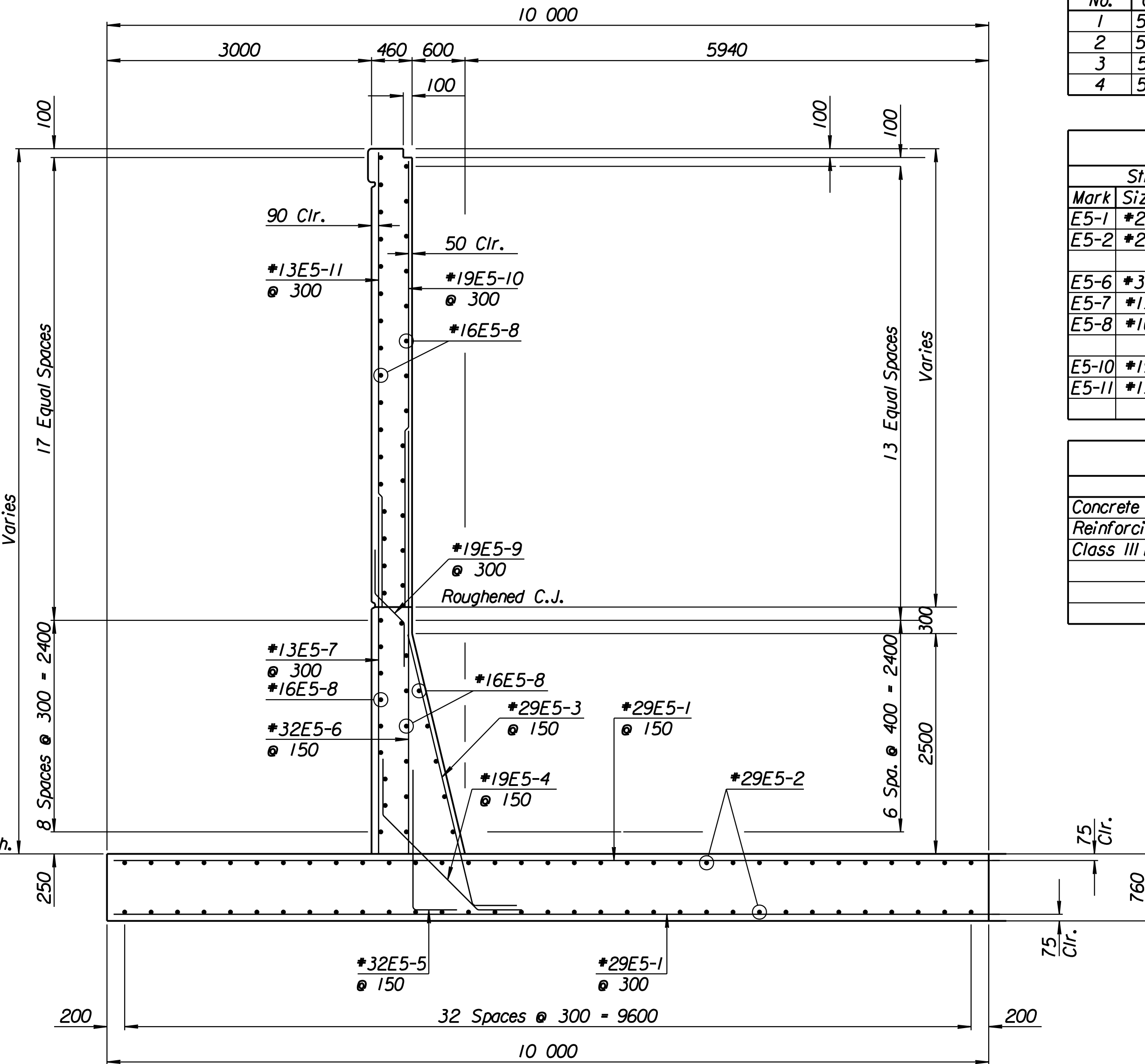
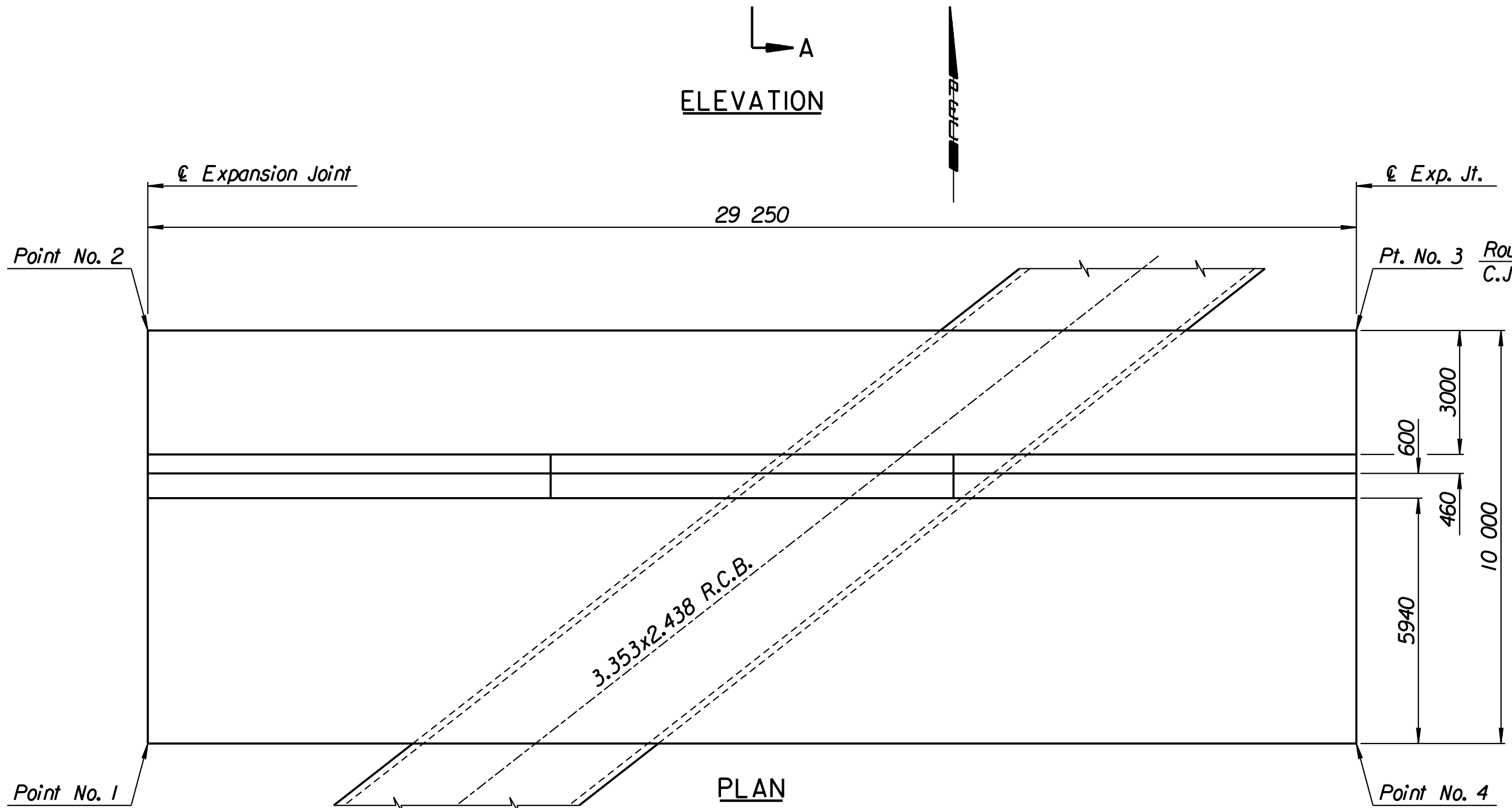
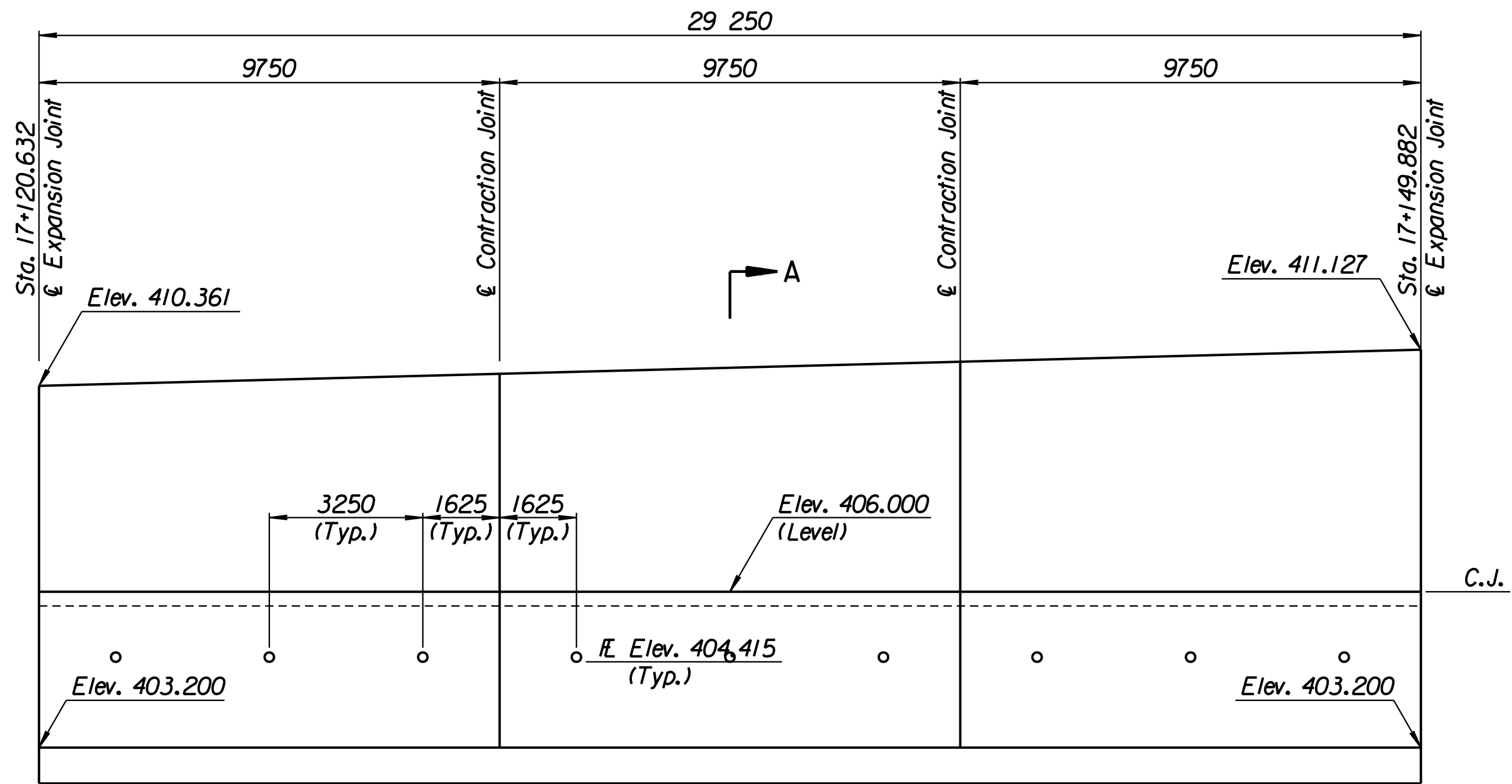


STATE	PROJECT NO.	YEAR	SHEET NO.	TOTAL SHEETS
KANSAS	54-87 K-6657-01	2002	320	1122

LAYOUT INFORMATION				
Point No.	North Coordinate	East Coordinate	Station	Offset
1	511925.952	493015.150	17+120.632	11.495 Lt.
2	511935.022	493010.938	17+120.632	21.495 Lt.
3	511947.344	493037.466	17+149.882	21.495 Lt.
4	511938.274	493041.678	17+149.882	11.495 Lt.

REINFORCING STEEL							
Straight Bars				Bent Bars			
Mark	Size	Number	Length	Mark	Size	Number	Length
E5-1	*29	294	9920	E5-3	*29	195	3950
E5-2	*29	132	16 000	E5-4	*19	195	2600
E5-6	*32	195	5920	E5-5	*32	195	2760
E5-7	*13	99	4180	E5-9	*19	99	1350
E5-8	*16	153	9650				
E5-10	*19	99	4210				
E5-11	*13	99	4310				

WALL QUANTITIES		
Item	Quantity	Unit
Concrete (Grade 30)(AE)	345.4	m ³
Reinforcing Steel (Grade 420)	45 671	kg
Class III Excavation	1466.3	m ³



Excavate to Elevation 399.6 and compact backfill.
See "Overexcavation and Compaction Detail" on Sheet No. 238.

BENDING DIAGRAMS
All dimensions are out to out of bars.

RECORD DRAWING

1			
No.	Revisions	By	Date
CITY OF WICHITA			
TYLER NORTHWEST WALL			
STA. 17+120.632 TO STA. 17+149.882			
SEDGWICK COUNTY			
Professional Engineering Consultants, P.A. 303 S. TOPEKA • WICHITA, KANSAS 67202 316-262-2691 • FAX 316-262-3003			
Designed by	P.D.F.	Checked by	R.A.S.
Drawn by	W.L.L.	Date	April, 2002
		Job No.	97362

Drawn by: wil
 Plotted by: drp
 3-28-2002
 I:/1997/97362/As-Built/dgn/s/Vol 2/Sh 320-Tyler-NWwall-5.dgn Last Rev: 8-23-07 By: gdr