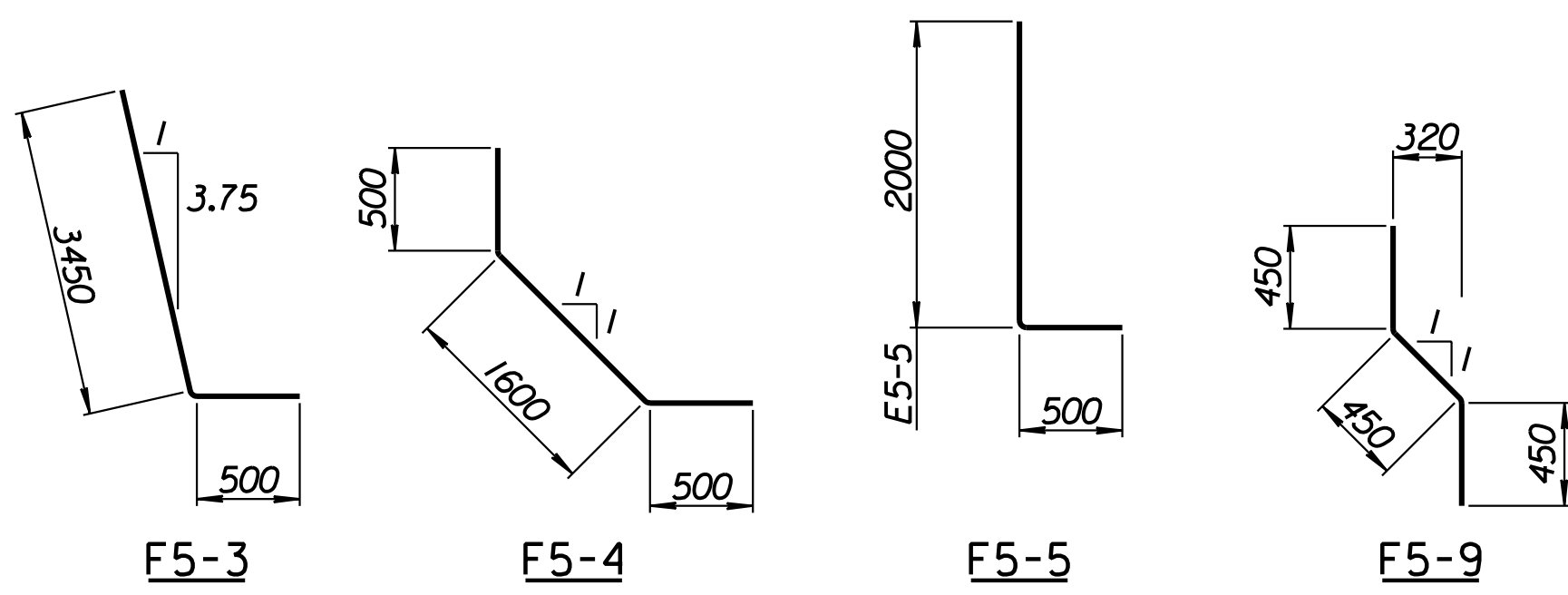
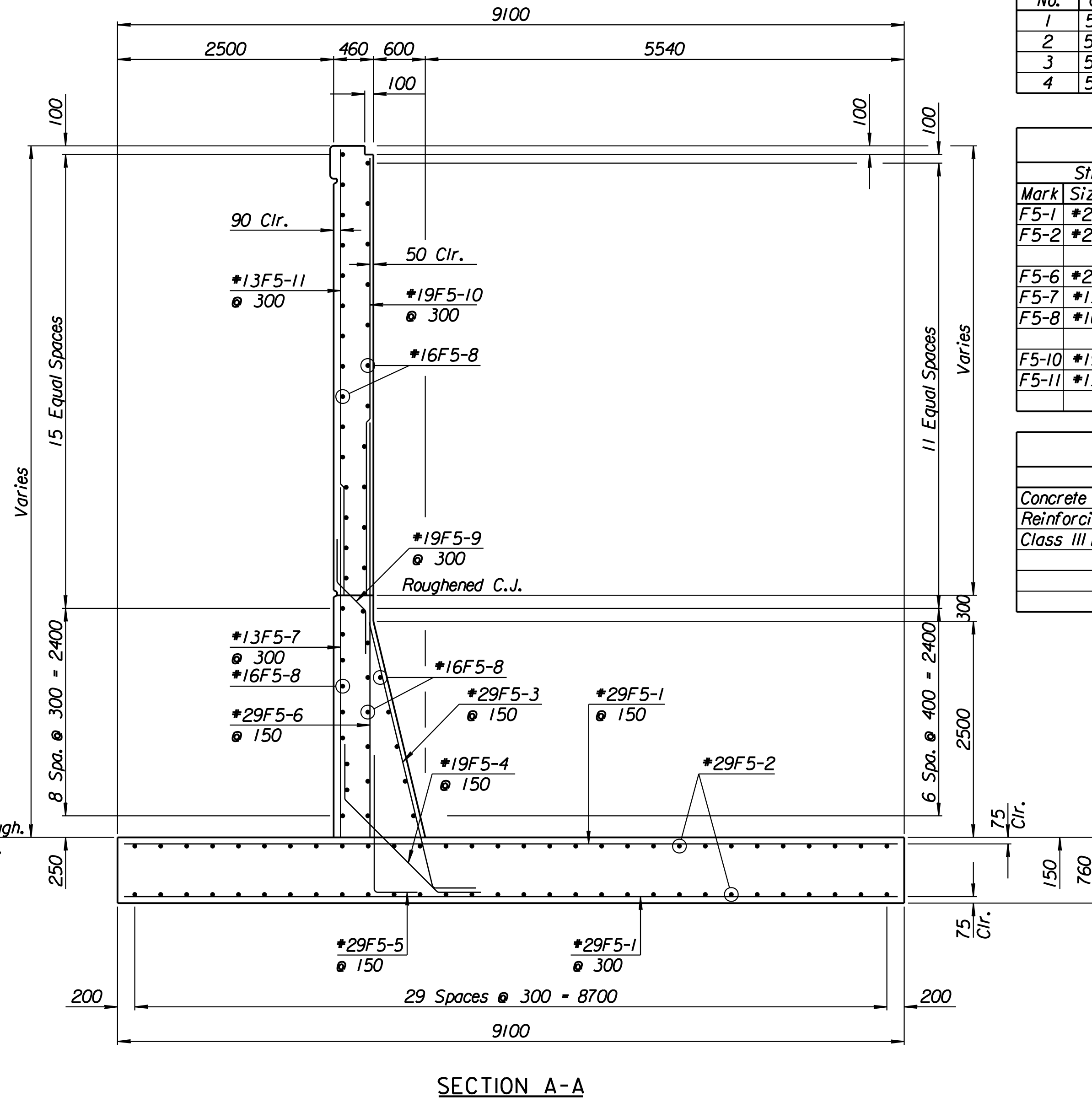
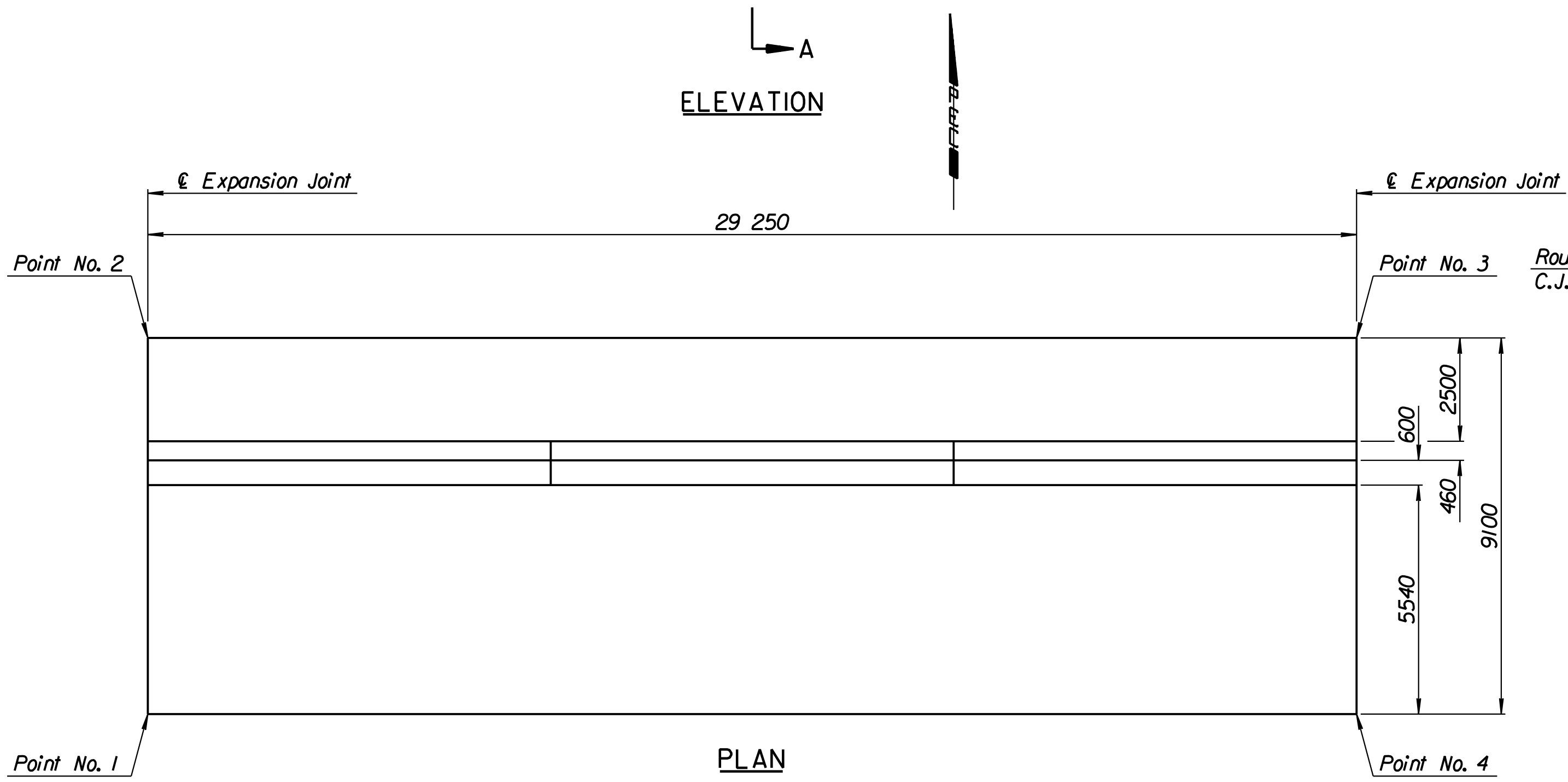
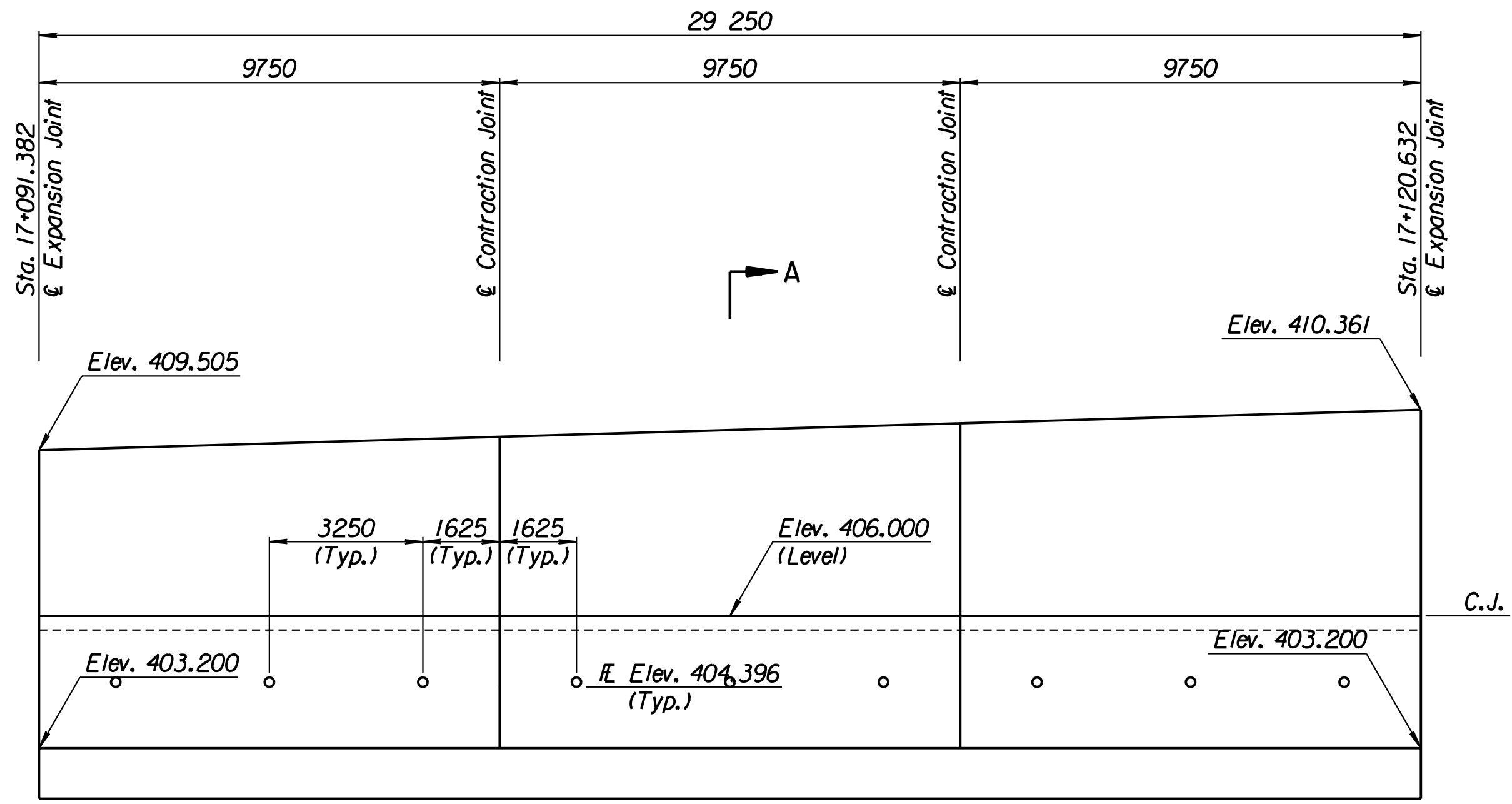


STATE	PROJECT NO.	YEAR	SHEET NO.	TOTAL SHEETS
KANSAS	54-87 K-6657-01	2002	321	1122

LAYOUT INFORMATION				
Point No.	North Coordinate	East Coordinate	Station	Offset
1	511913.993	492988.454	17+091.382	11.895 Lt.
2	511922.247	492984.620	17+091.382	20.995 Lt.
3	511934.568	493011.148	17+120.632	20.995 Lt.
4	511926.315	493014.982	17+120.632	11.895 Lt.

REINFORCING STEEL							
Straight Bars				Bent Bars			
Mark	Size	Number	Length	Mark	Size	Number	Length
F5-1	*29	294	9020	F5-3	*29	195	3950
F5-2	*29	120	16 000	F5-4	*19	195	2600
F5-6	*29	195	5510	F5-5	*29	195	2500
F5-7	*13	99	4270	F5-9	*19	99	1350
F5-8	*16	141	9650				
F5-10	*19	99	3360				
F5-11	*13	99	3460				

WALL QUANTITIES		
Item	Quantity	Unit
Concrete (Grade 30)(AE)	314.5	m
Reinforcing Steel (Grade 420)	39 982	kg <sup>3</sup>
Class III Excavation	1305.3	m <sup>3</sup>



Excavate to Elevation 399.6 and compact backfill.  
See "Overexcavation and Compaction Detail" on Sheet No. 238.

**BENDING DIAGRAMS**  
All dimensions are out to out of bars.

**RECORD DRAWING**

No.	Revisions	By	Date
CITY OF WICHITA			
<b>TYLER NORTHWEST WALL</b>			
STA. 17+091.382 TO STA. 17+120.632			
SEDGWICK COUNTY			
Professional Engineering Consultants, P.A. 303 S. TOPEKA • WICHITA, KANSAS 67202 316-262-2691 • FAX 316-262-3003			
Designed by	P.D.F.	Checked by	R.A.S.
Drawn by	W.L.L.	Date	April, 2002
		Job No.	97362

Drawn by: wil  
 Plotted by: drp  
 3-28-2002  
 I:\1997\97362\As-Built\NWWall-6.dgn  
 Last Rev: 8-23-07  
 By: gdr