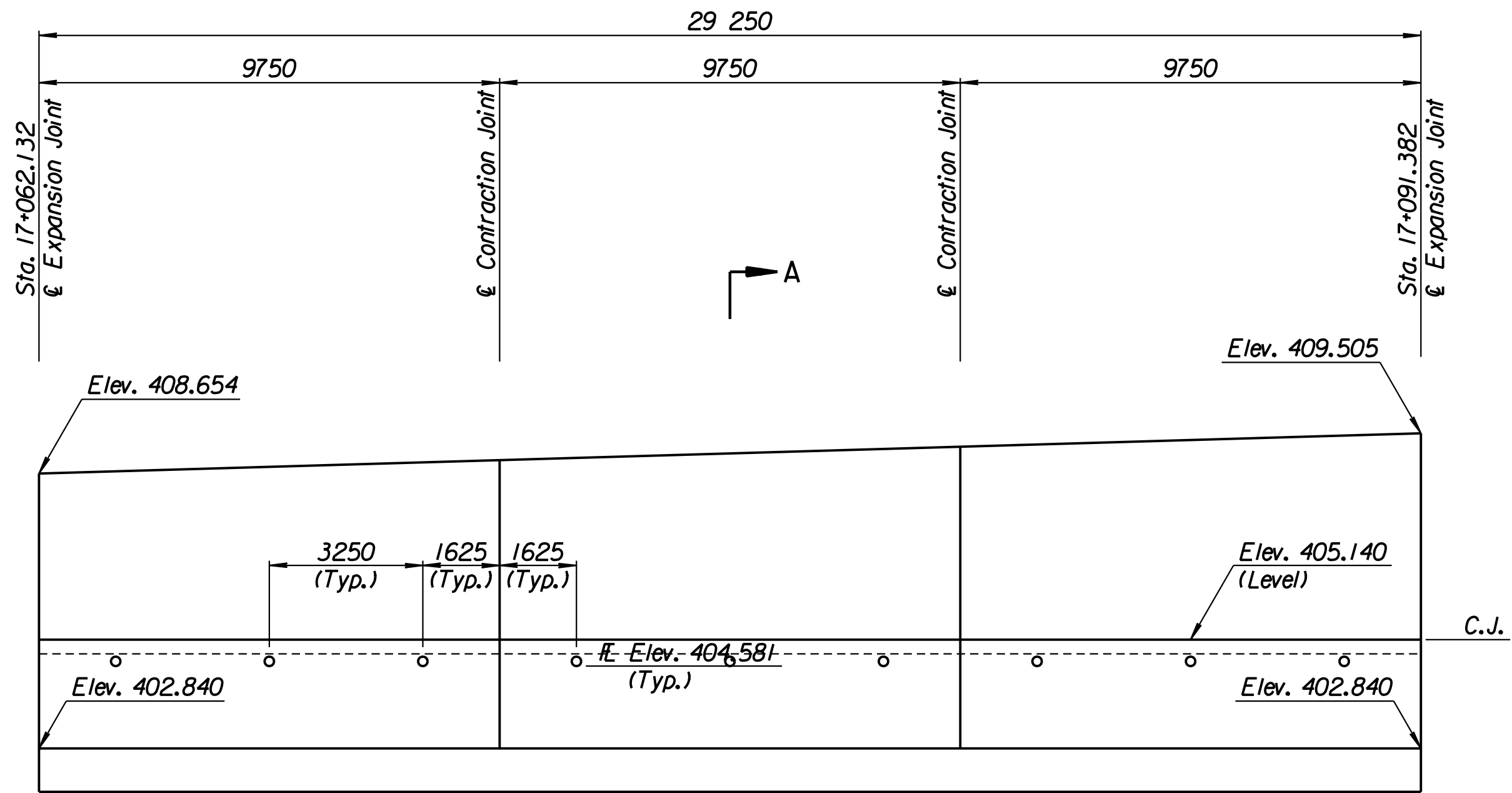


STATE	PROJECT NO.	YEAR	SHEET NO.	TOTAL SHEETS
KANSAS	54-87 K-6657-01	2002	322	1122

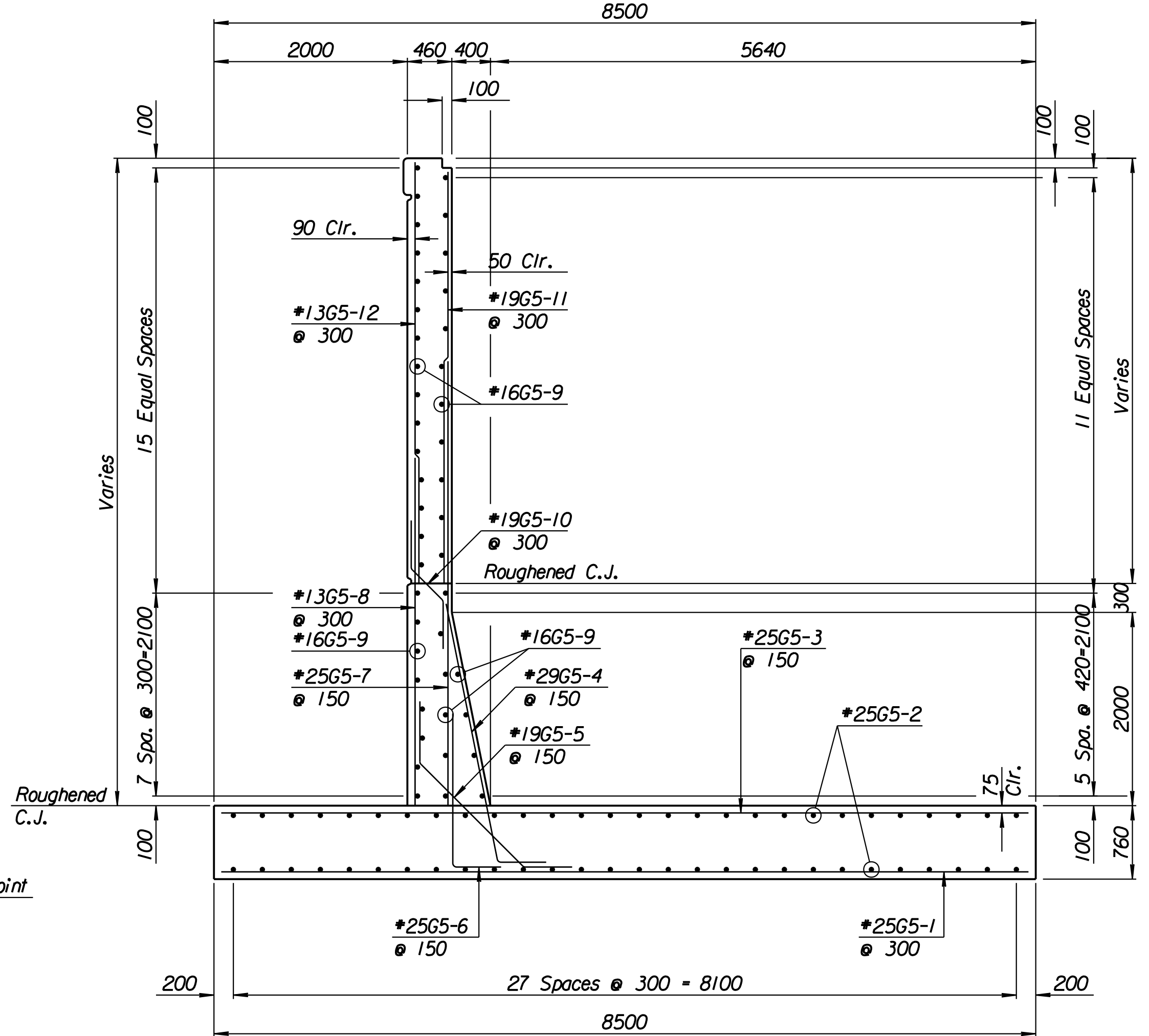
LAYOUT INFORMATION				
Point No.	North Coordinate	East Coordinate	Station	Offset
1	511901.762	492961.884	17+062.132	11.995 Lt.
2	511909.471	492958.303	17+062.132	20.495 Lt.
3	511921.793	492984.831	17+091.382	20.495 Lt.
4	511914.084	492988.412	17+091.382	11.995 Lt.

REINFORCING STEEL							
Straight Bars				Bent Bars			
Mark	Size	Number	Length	Mark	Size	Number	Length
G5-1	*25	99	8420	G5-4	*29	195	3250
G5-2	*25	195	15 540	G5-5	*19	195	2500
G5-3	*29	195	8420	G5-6	*25	195	1910
G5-7	*25	195	4610	G5-10	*19	99	1350
G5-8	*13	99	3760				
G5-9	*16	132	9650				
G5-11	*19	99	3370				
G5-12	*13	99	3470				

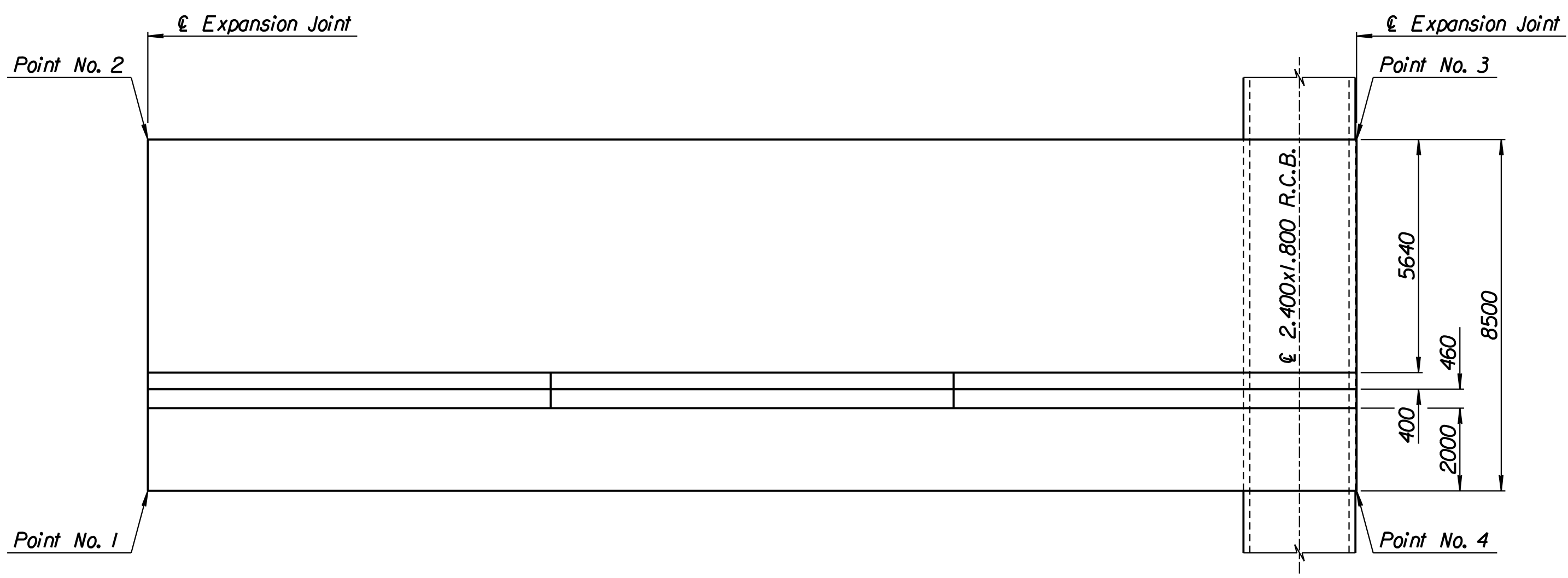
WALL QUANTITIES		
Item	Quantity	Unit
Concrete (Grade 30)(AE)	284.3	m <sup>3</sup>
Reinforcing Steel (Grade 420)	36 740	kg
Class III Excavation	1151.6	m <sup>3</sup>



ELEVATION

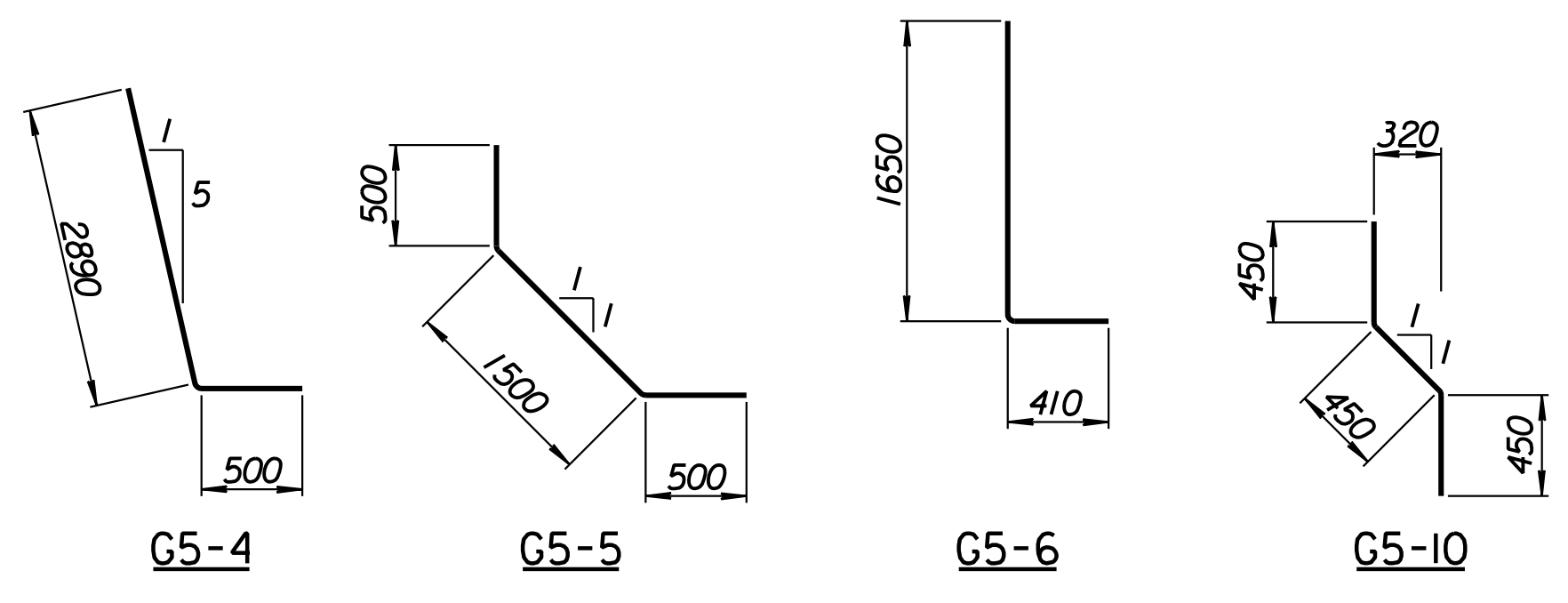


SECTION A-A



PLAN

Excavate to Elevation 399.6 and compact backfill.  
See "Overexcavation and Compaction Detail" on Sheet No. 238.



BENDING DIAGRAMS  
All dimensions are out to out of bars.

RECORD DRAWING

1			
No.	Revisions	By	Date
CITY OF WICHITA			
<b>TYLER NORTHWEST WALL</b>			
STA. 17+062.132 TO STA. 17+091.382			
SEDGWICK COUNTY			
<b>Professional Engineering Consultants, P.A.</b> 303 S. TOPEKA • WICHITA, KANSAS 67202 316-262-2691 • FAX 316-262-3003			
Designed by	P.D.F.	Checked by	R.A.S.
Drawn by	W.L.L.	Date	April, 2002
		Job No.	97362

Drawn by: wil 3-28-2002  
 Plotted by: drp 3-28-2002  
 I:/1997/97362/As-Built/dgn/s/Vol 2/Sh 322-Tyler-NWwall-7.dgn Last Rev: 8-23-07 By: gdr