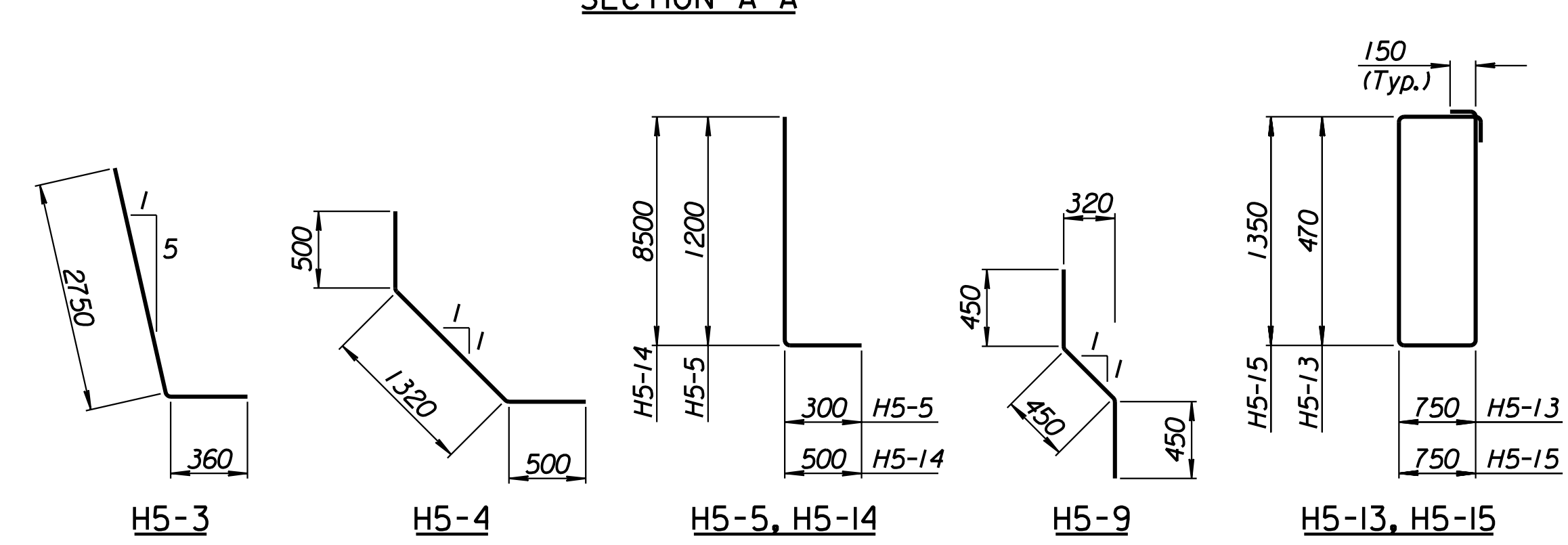
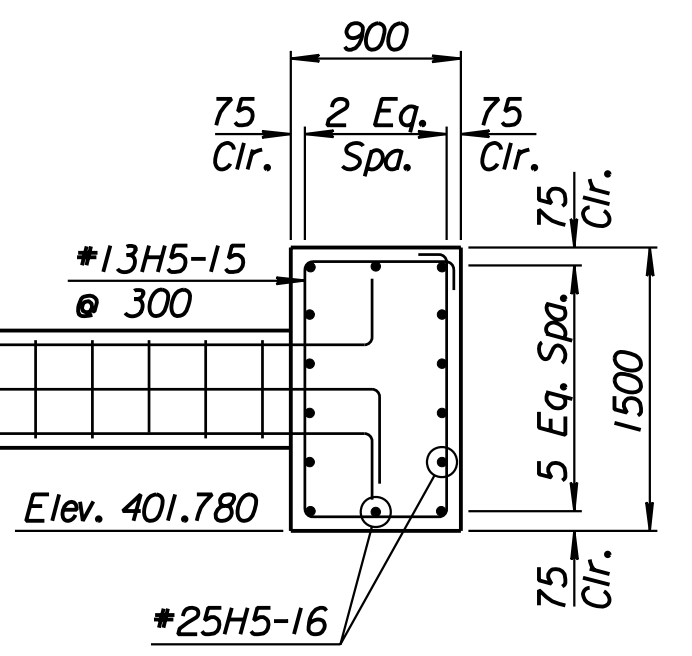
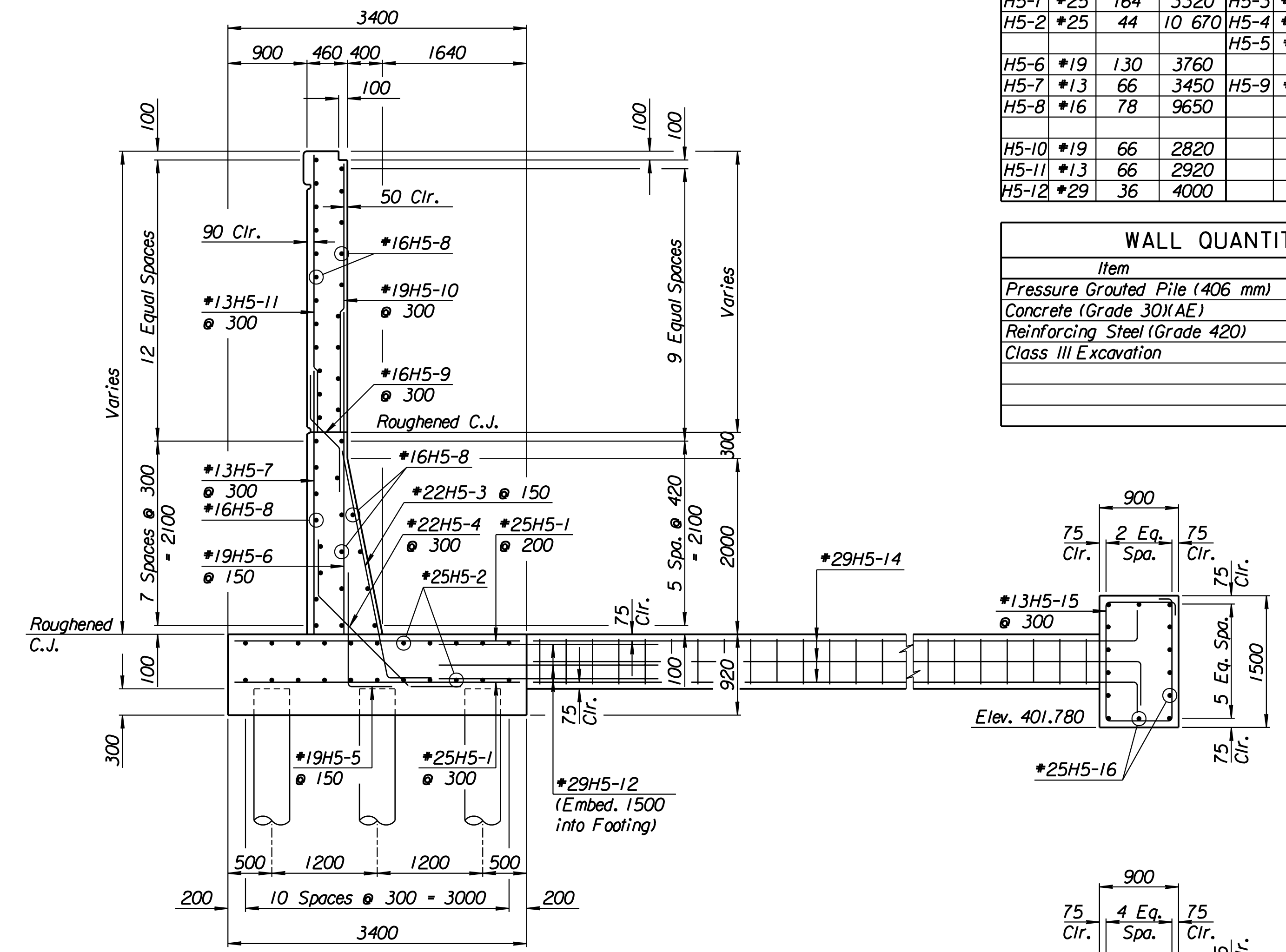
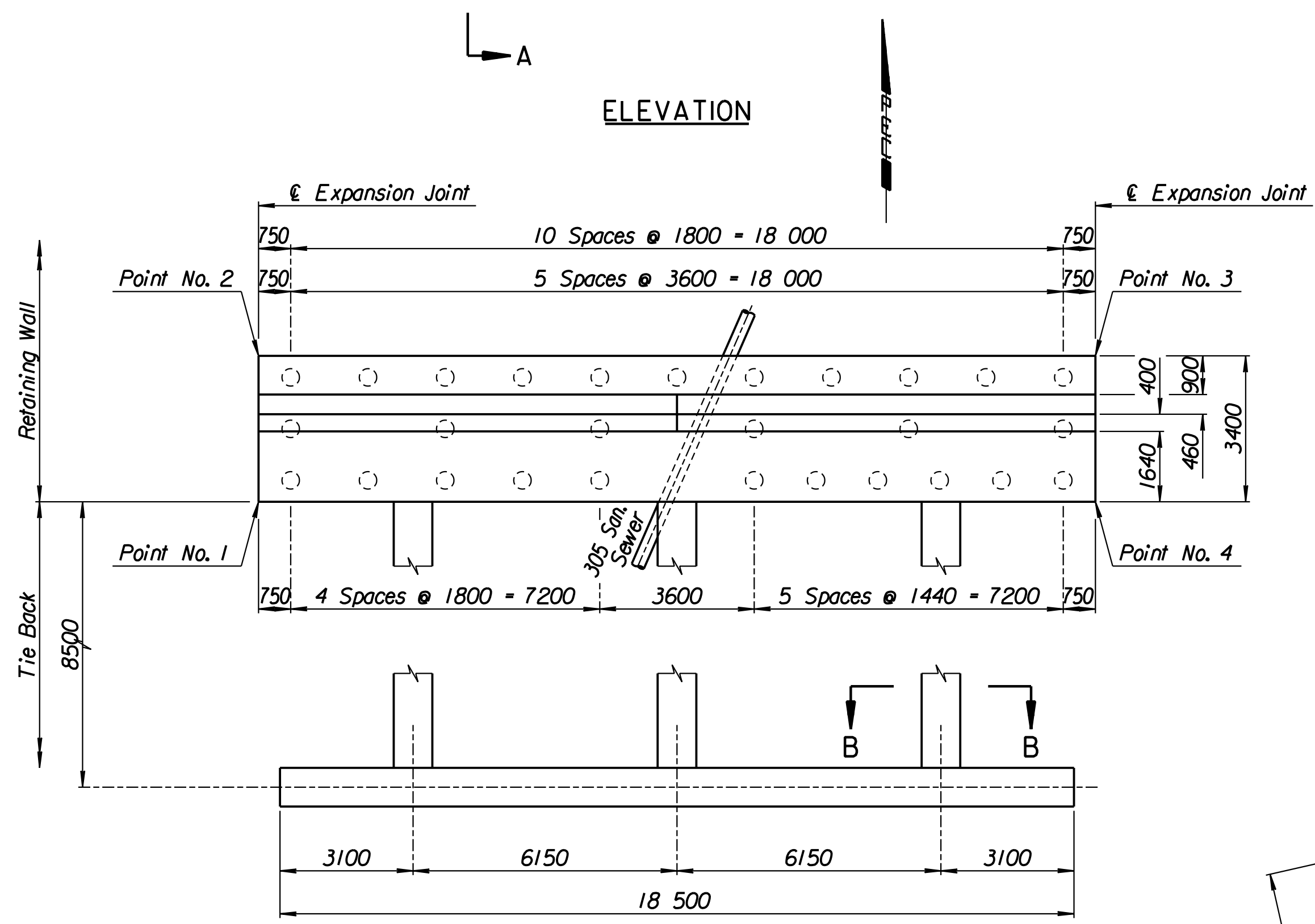
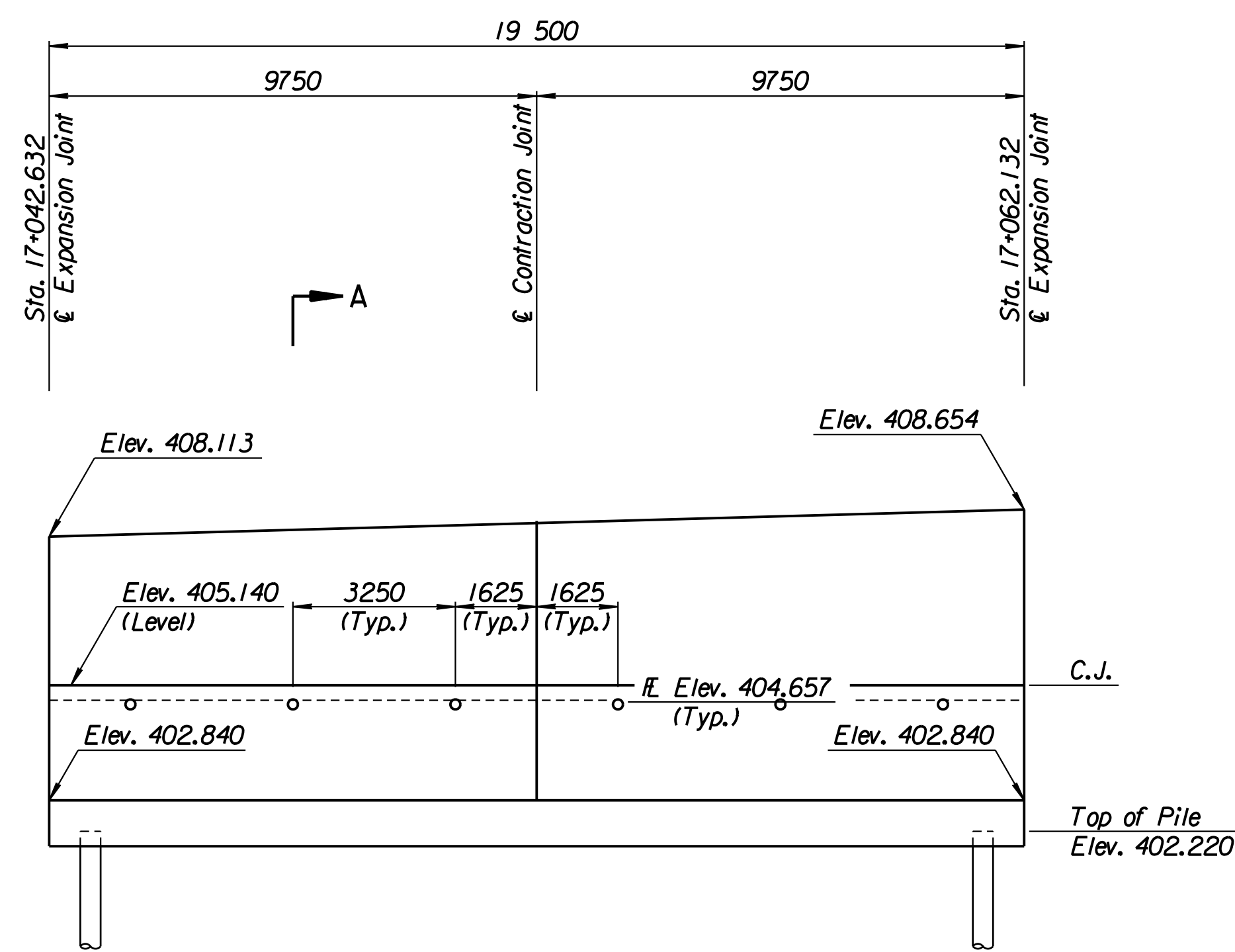


STATE	PROJECT NO.	YEAR	SHEET NO.	TOTAL SHEETS
KANSAS	54-87 K-6657-01	2002	323	1122

LAYOUT INFORMATION				
Point No.	North Coordinate	East Coordinate	Station	Offset
1	511897.176	492942.513	17+042.632	15.995 Lt.
2	511900.259	492941.081	17+042.632	19.395 Lt.
3	511908.474	492958.766	17+062.132	19.395 Lt.
4	511905.390	492960.199	17+062.132	15.995 Lt.

REINFORCING STEEL							
Straight Bars				Bent Bars			
Mark	Size	Number	Length	Mark	Size	Number	Length
H5-1	*25	164	3320	H5-3	*22	130	3110
H5-2	*25	44	10 670	H5-4	*22	66	2320
H5-6	*19	130	3760	H5-5	*19	130	1500
H5-7	*13	66	3450	H5-9	*16	66	1350
H5-8	*16	78	9650				
H5-10	*19	66	2820				
H5-11	*13	66	2920				
H5-12	*29	36	4000				

WALL QUANTITIES		
Item	Quantity	Unit
Pressure Grouted Pile (406 mm)	336.0	m
Concrete (Grade 30)(AE)	118.3	m <sup>3</sup>
Reinforcing Steel (Grade 420)	10 121	kg
Class III Excavation	106.9	m <sup>3</sup>



TIE BACK REINFORCING STEEL							
Straight Bars			Bent Bars				
Mark	Size	Number	Length	Mark	Size	Number	Length
H5-16	*25	28	10 170	H5-13	*13	84	2740
				H5-14	*29	36	9000
				H5-15	*13	63	4500

TIE BACK QUANTITIES		
Item	Quantity	Unit
Concrete (Grade 30)(AE)	38.5	m <sup>3</sup>
Reinforcing Steel (Grade 420)	3281	kg

Note:  
Contractor shall verify location of 305 mm Sanitary Sewer prior to Pile Drilling Operation.

**BENDING DIAGRAMS**  
All dimensions are out to out of bars.

**RECORD DRAWING**

1			
No.	Revisions	By	Date
CITY OF WICHITA			
<b>TYLER NORTHWEST WALL</b>			
STA. 17+042.632 TO STA. 17+062.132			
SEDGWICK COUNTY			
<b>Professional Engineering Consultants, P.A.</b> 303 S. TOPEKA • WICHITA, KANSAS 67202 316-262-2691 • FAX 316-262-3003			
Designed by	P.D.F.	Checked by	R.A.S.
Drawn by	W.L.L.	Date	April 11, 2002
		Job No.	97362

Drawn by: wil  
 Plotted by: drp  
 3-25-2002  
 1:1997197362/As-Built/dgn/s/Vol 2/Sh 323-Tyler-NWwall-8.dgn Last Rev: 8-23-07 By: gdr