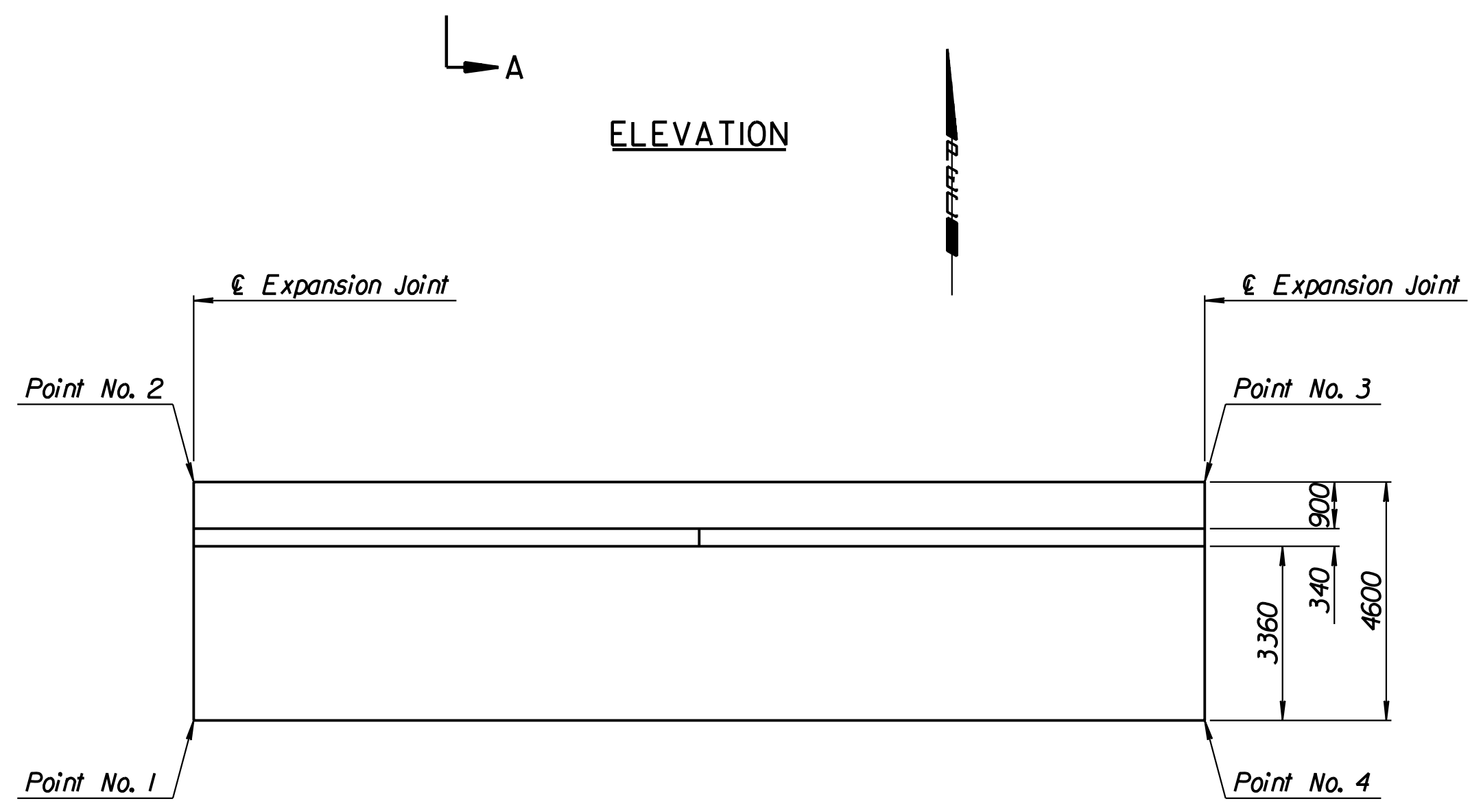
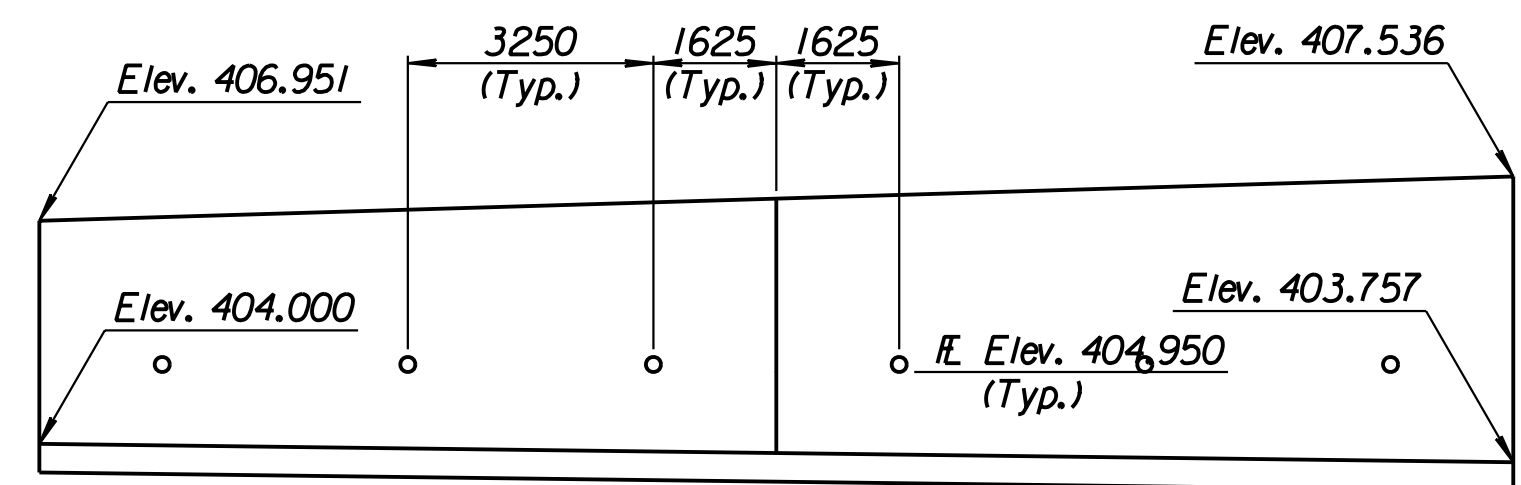
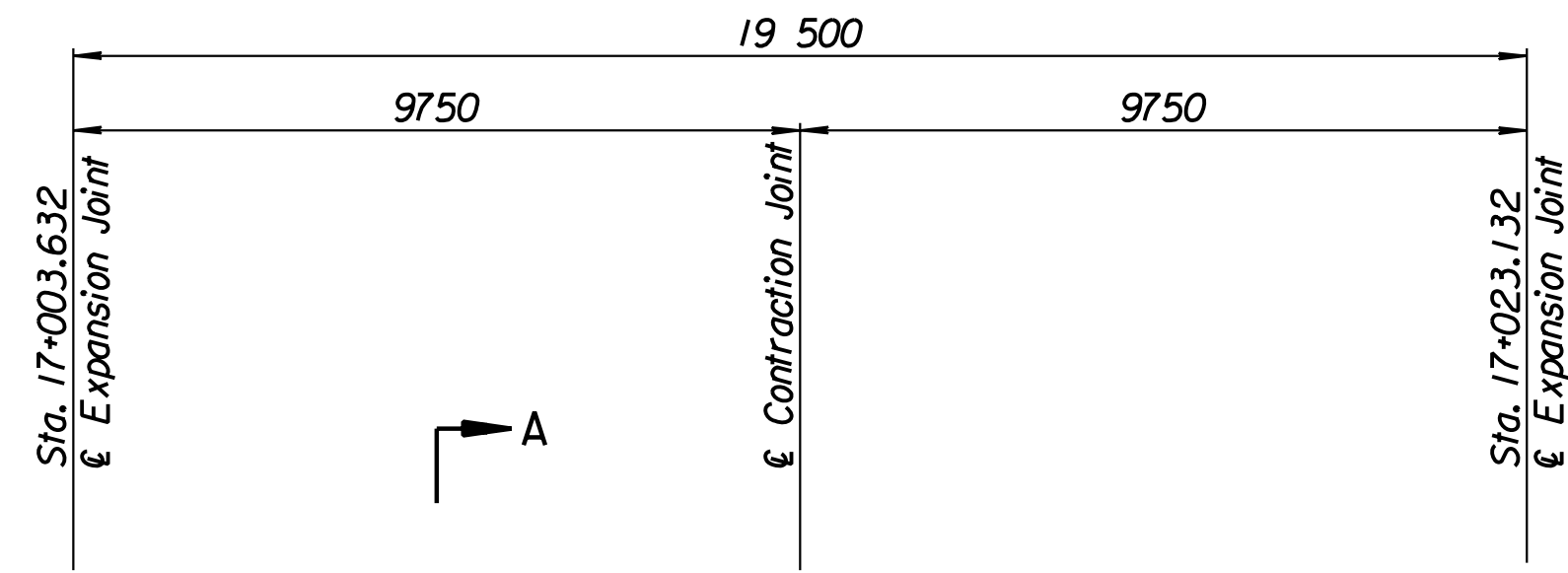


|        |                 |      |           |              |
|--------|-----------------|------|-----------|--------------|
| STATE  | PROJECT NO.     | YEAR | SHEET NO. | TOTAL SHEETS |
| KANSAS | 54-87 K-6657-01 | 2002 | 325       | 1122         |

| LAYOUT INFORMATION |                  |                 |            |            |
|--------------------|------------------|-----------------|------------|------------|
| Point No.          | North Coordinate | East Coordinate | Station    | Offset     |
| 1                  | 511879.658       | 492907.648      | 17+003.632 | 14.795 Lt. |
| 2                  | 511883.830       | 492905.710      | 17+003.632 | 19.395 Lt. |
| 3                  | 511892.045       | 492923.396      | 17+023.132 | 19.395 Lt. |
| 4                  | 511887.873       | 492925.333      | 17+023.132 | 14.795 Lt. |

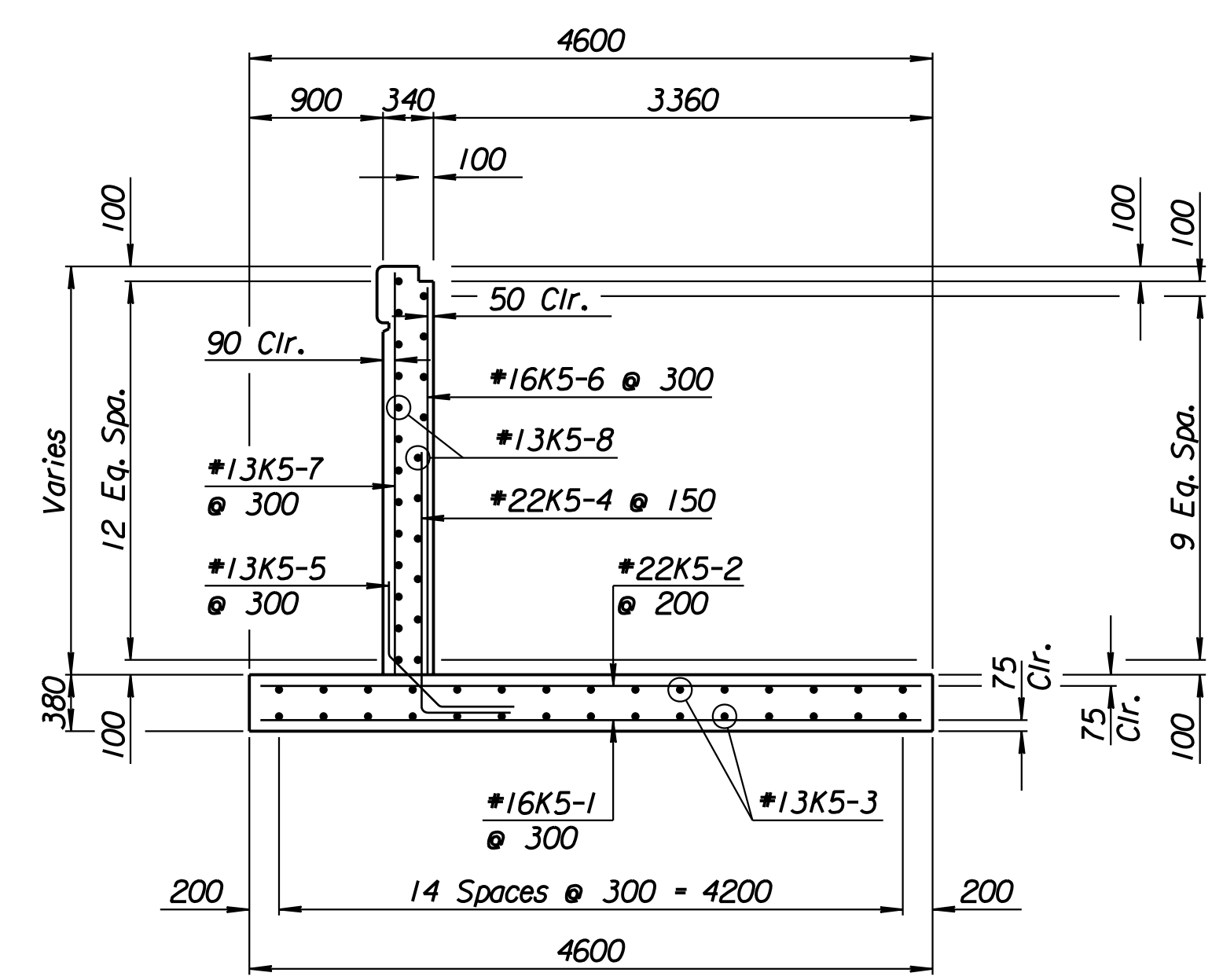
| REINFORCING STEEL |      |        |        |           |      |        |        |
|-------------------|------|--------|--------|-----------|------|--------|--------|
| Straight Bars     |      |        |        | Bent Bars |      |        |        |
| Mark              | Size | Number | Length | Mark      | Size | Number | Length |
| K5-1              | *16  | 66     | 4520   | K5-4      | *22  | 130    | 1780   |
| K5-2              | *22  | 98     | 4520   | K5-5      | *13  | 66     | 1200   |
| K5-3              | *13  | 60     | 10 100 |           |      |        |        |
| K5-6              | *16  | 66     | Varies |           |      |        |        |
| K5-7              | *13  | 66     | Varies |           |      |        |        |
| K5-8              | *13  | 46     | 9650   |           |      |        |        |

| WALL QUANTITIES               |          |                |
|-------------------------------|----------|----------------|
| Item                          | Quantity | Unit           |
| Concrete (Grade 30)(AE)       | 56.2     | m <sup>3</sup> |
| Reinforcing Steel (Grade 420) | 4181     | kg             |
| Class III Excavation          | 0.0      | m <sup>3</sup> |

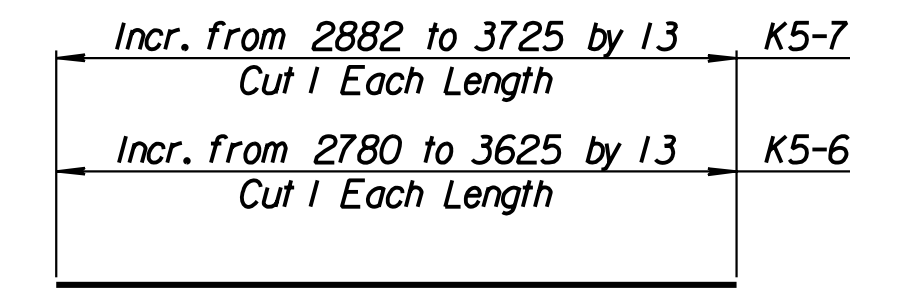
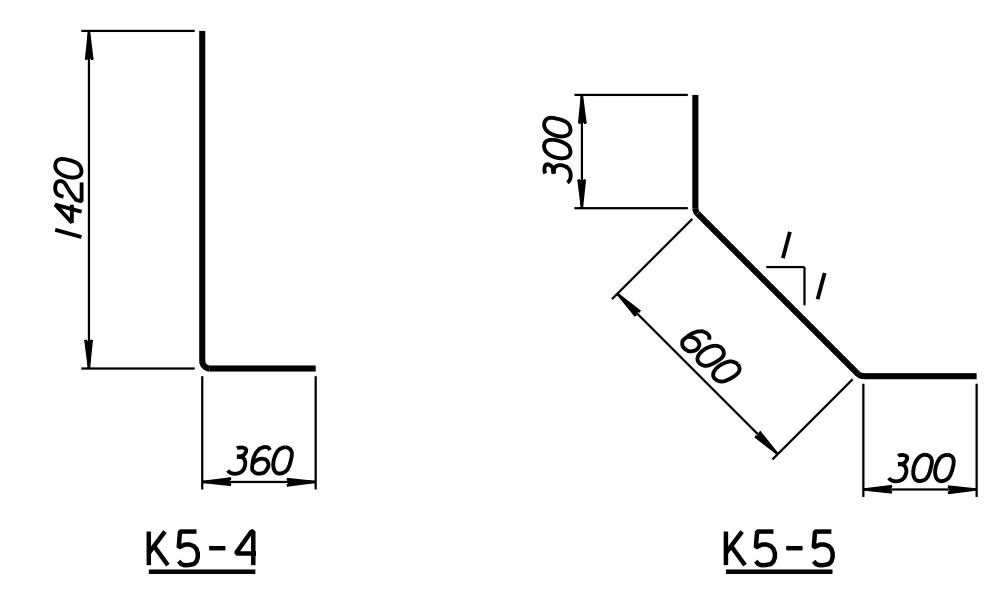


ELEVATION

PLAN



SECTION A-A



BENDING DIAGRAMS  
All dimensions are out to out of bars.

Drawn by: wil  
 Plotted by: drp  
 3-22-2002  
 I:/1997/97362/As-Built/dgn/s/Vol 2/Sh 325-Tyler-NWwall-10.dgn Last Rev: 8-23-07 By: gdr

|  |           |            |                           |
|--|-----------|------------|---------------------------|
| 1  |           |            |                           |
| No.  | Revisions | By         | Date                      |
| CITY OF WICHITA  |           |            |                           |
| <b>TYLER NORTHWEST WALL</b><br>STA. 17+003.632 TO STA. 17+023.132<br>SEDGWICK COUNTY   |           |            |                           |
| <b>Professional Engineering Consultants, P.A.</b><br><small>303 S. TOPEKA • WICHITA, KANSAS 67202<br/>         316-262-2691 • FAX 316-262-3003</small> |           |            |                           |
| Designed by  | P.D.F.    | Checked by | R.A.S.                    |
| Drawn by   | W.L.L.    | Date       | April, 2002 Job No. 97362 |

**RECORD DRAWING**