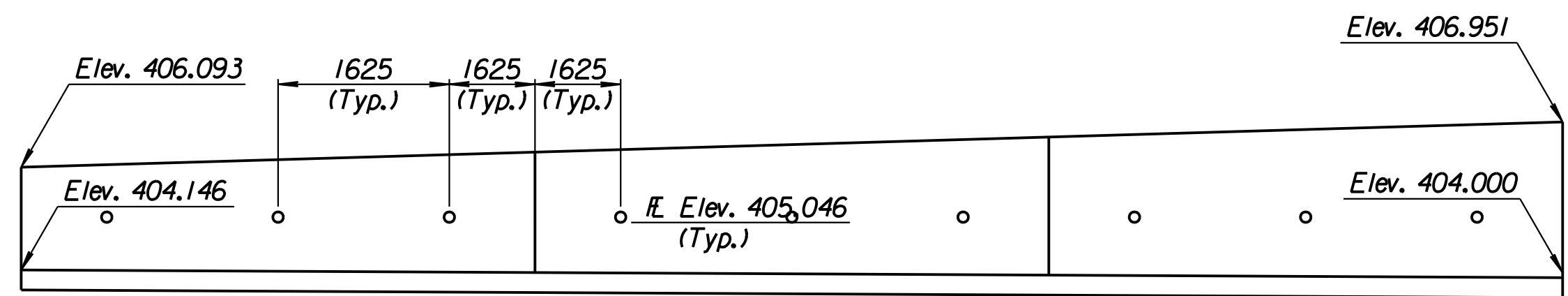
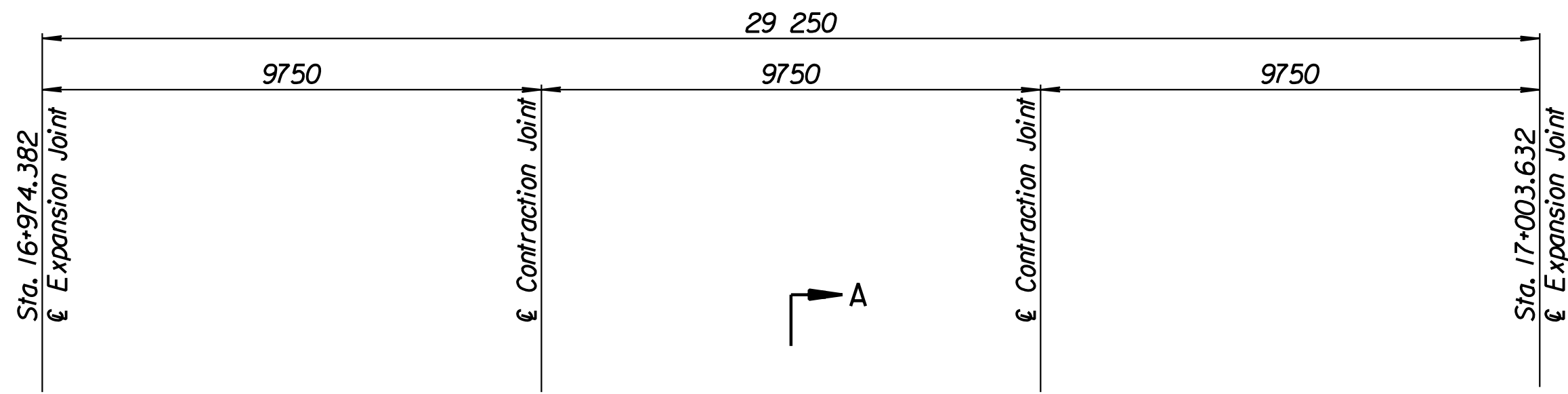


STATE	PROJECT NO.	YEAR	SHEET NO.	TOTAL SHEETS
KANSAS	54-87 K-6657-01	2002	326	1122

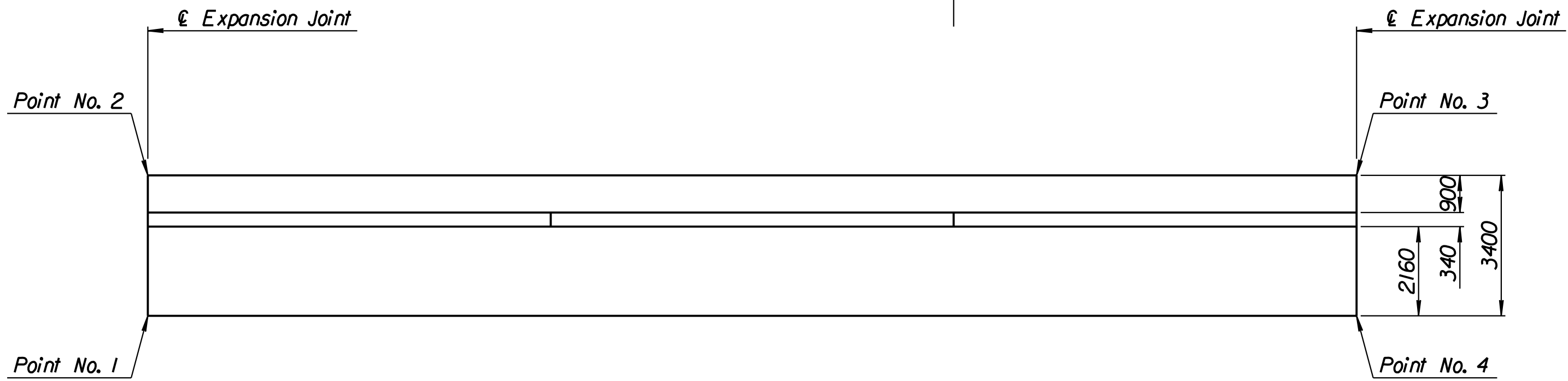
LAYOUT INFORMATION				
Point No.	North Coordinate	East Coordinate	Station	Offset
1	511868.425	492880.614	16+974.382	15.995 Lt.
2	511871.508	492879.182	16+974.382	19.395 Lt.
3	511883.830	492905.710	17+003.632	19.395 Lt.
4	511880.747	492907.142	17+003.632	15.995 Lt.

REINFORCING STEEL							
Straight Bars				Bent Bars			
Mark	Size	Number	Length	Mark	Size	Number	Length
L5-1	*16	246	3320	L5-3	*16	195	1350
L5-2	*13	44	14 960	L5-4	*13	99	1200
L5-5	*16	99	Varies				
L5-6	*13	99	Varies				
L5-7	*13	54	9650				

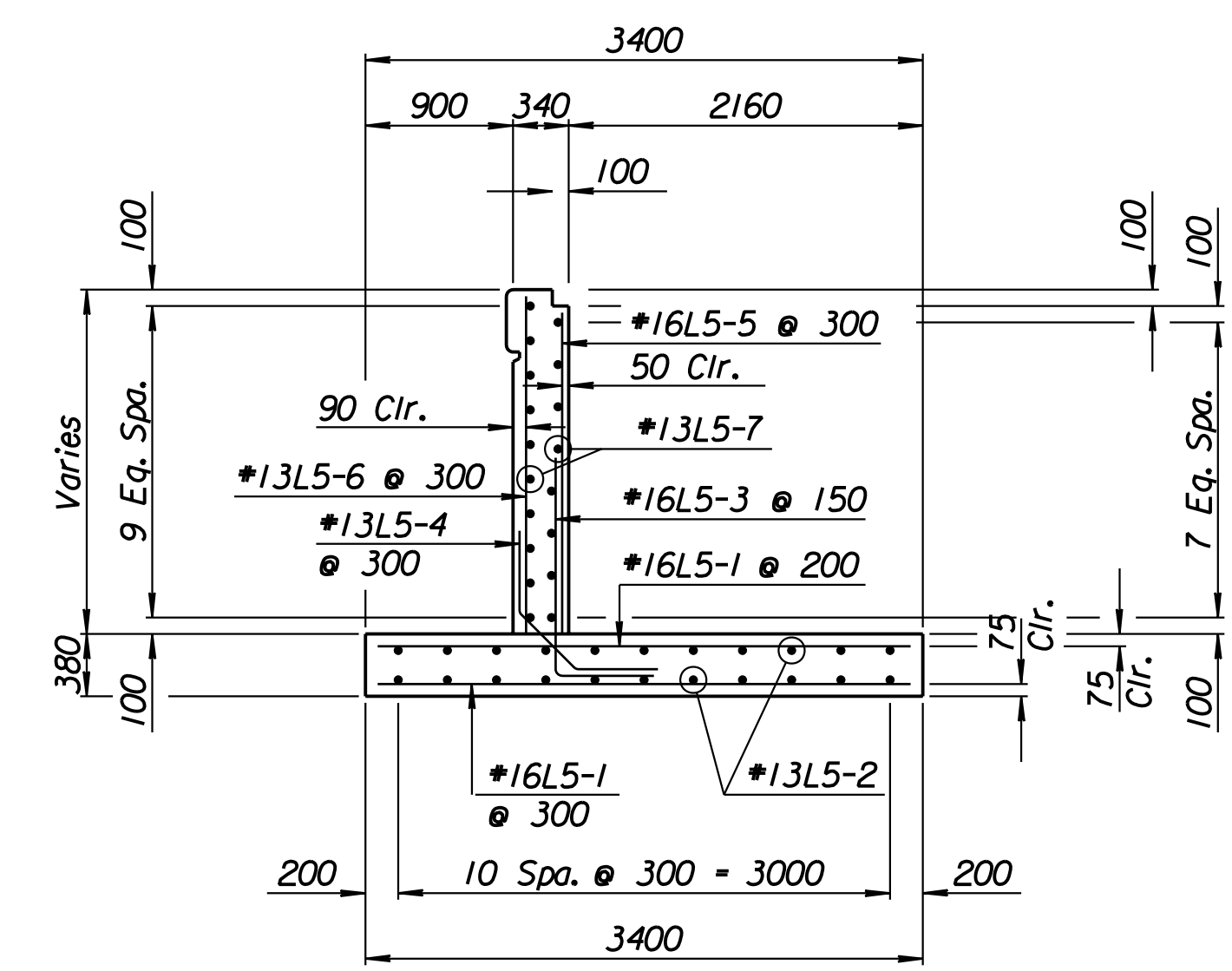
WALL QUANTITIES		
Item	Quantity	Unit
Concrete (Grade 30)(AE)	61.9	m ³
Reinforcing Steel (Grade 420)	3551	kg
Class III Excavation	0.0	m ³



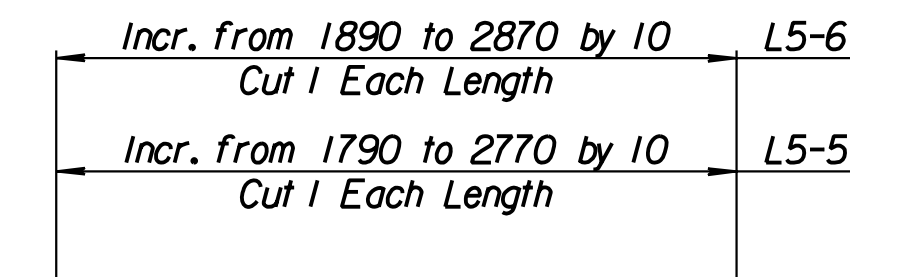
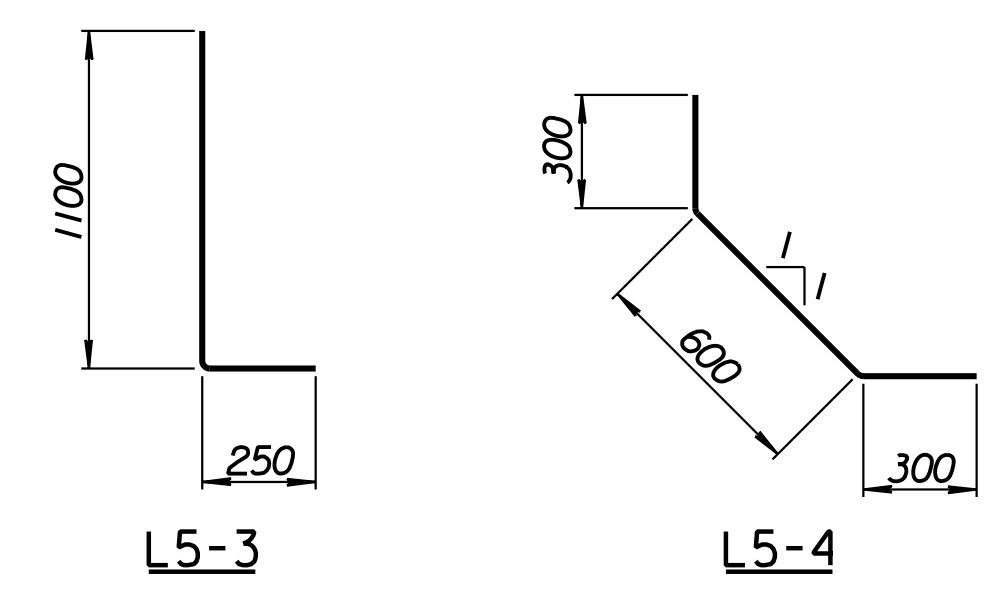
ELEVATION



PLAN



SECTION A-A



BENDING DIAGRAMS
All dimensions are out to out of bars.

Drawn by: wil
 Plotted by: drp
 3-22-2002
 I:/1997/97362/As-Built/dgn/s/Vol 2/Sh 326-Tyler-NWwall-1.dgn
 Last Rev: 8-23-07 By: gdr

1			
No.	Revisions	By	Date
CITY OF WICHITA			
TYLER NORTHWEST WALL STA. 16+974.382 TO STA. 17+003.632 SEDGWICK COUNTY			
Professional Engineering Consultants, P.A. <small>303 S. TOPEKA • WICHITA, KANSAS 67202 316-262-2691 • FAX 316-262-3003</small>			
Designed by	P.D.F.	Checked by	R.A.S.
Drawn by	W.L.L.	Date	April, 2002
		Job No.	97362

RECORD DRAWING