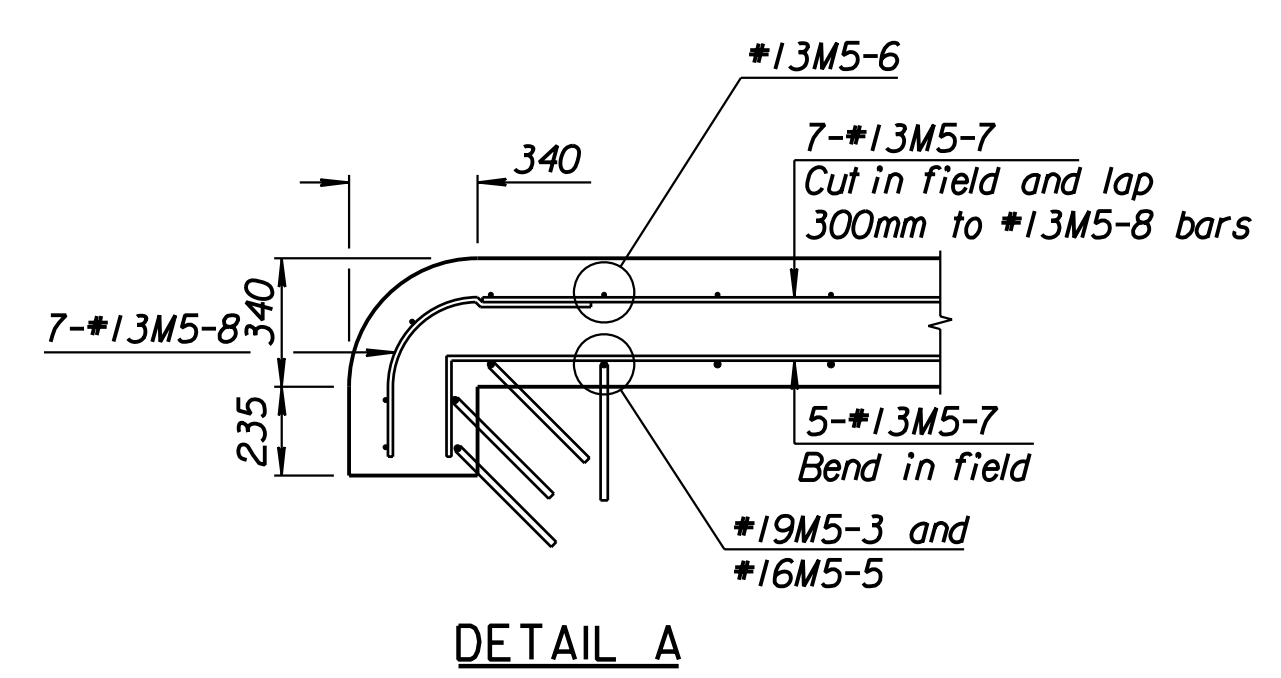
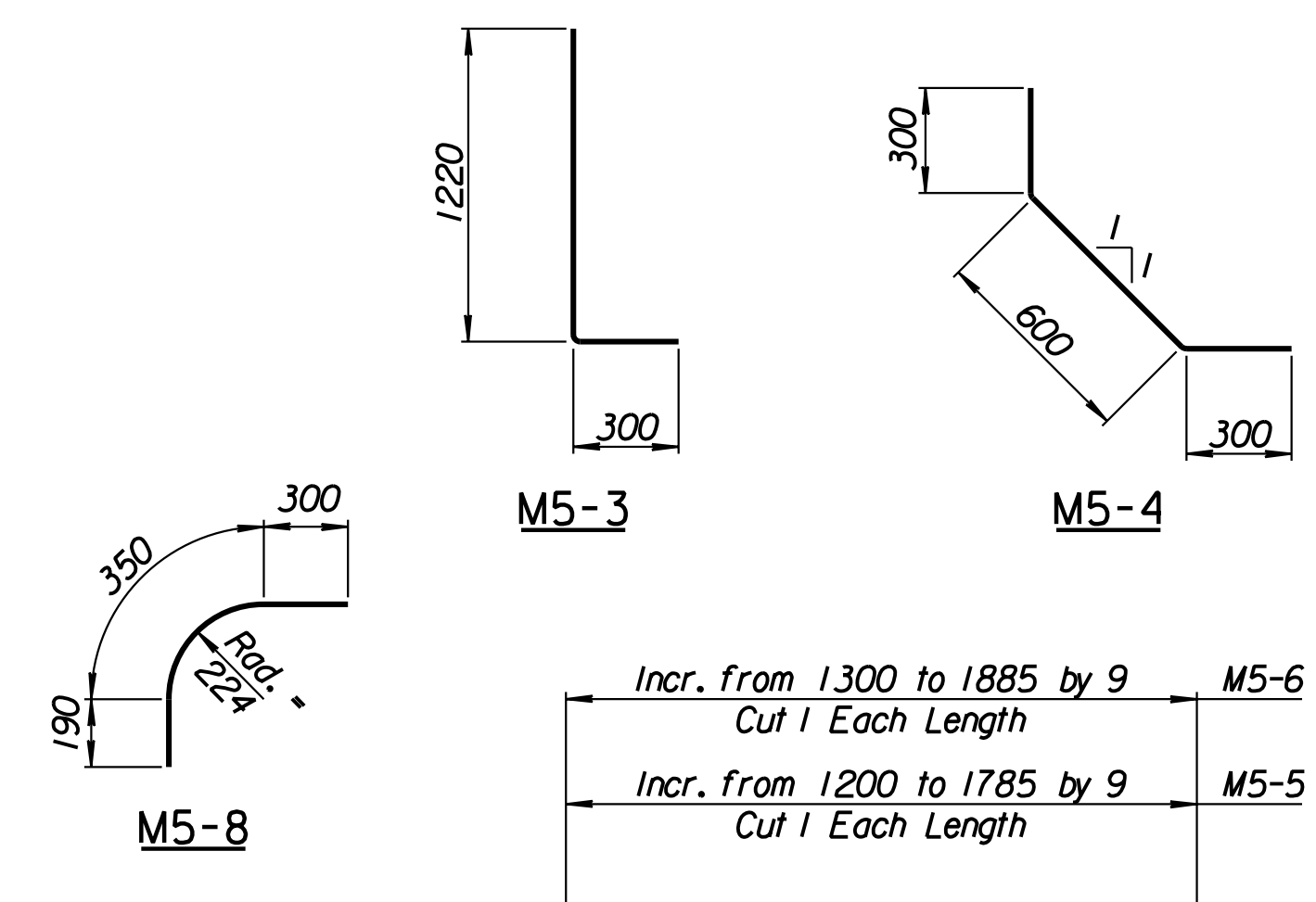
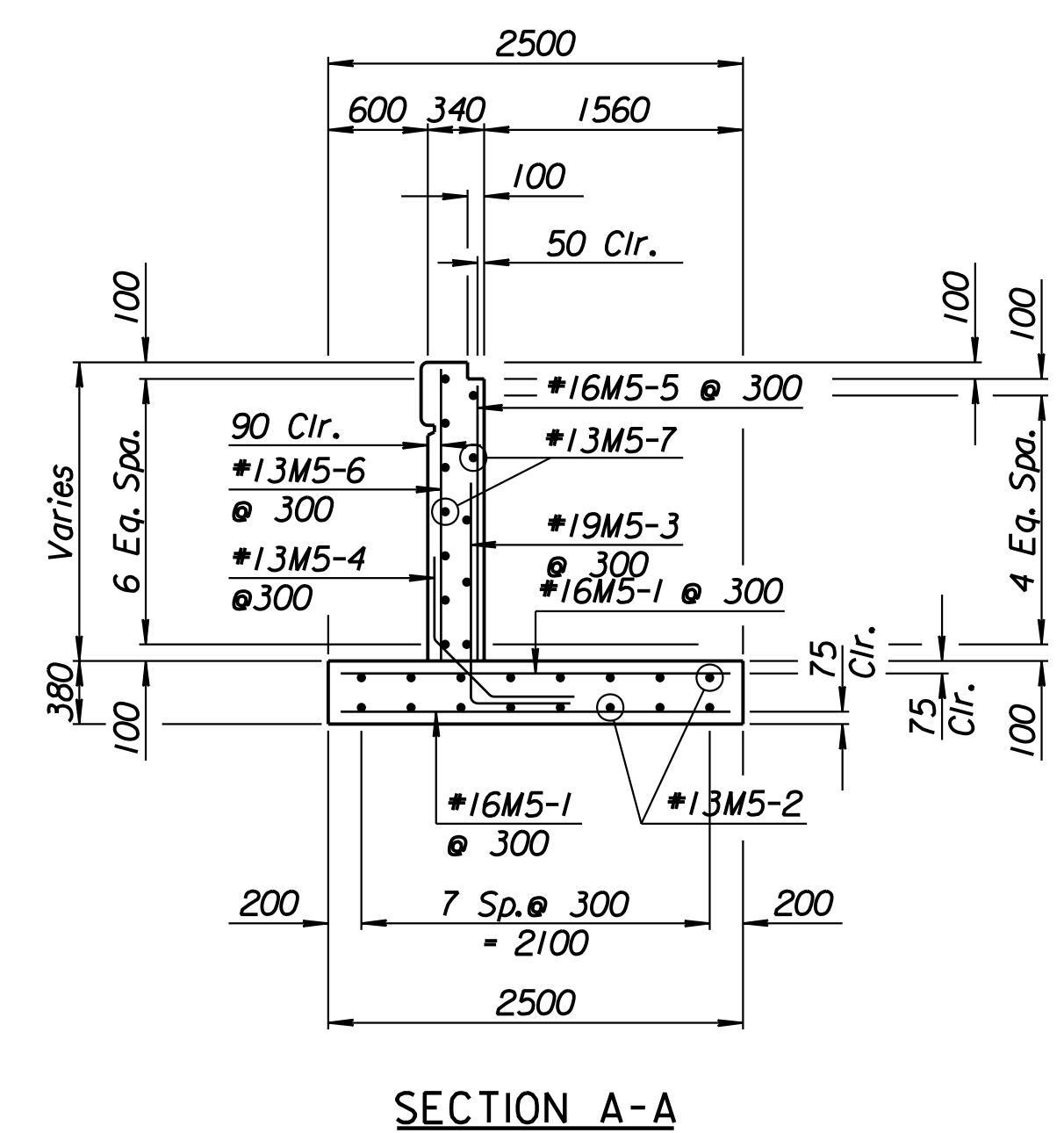
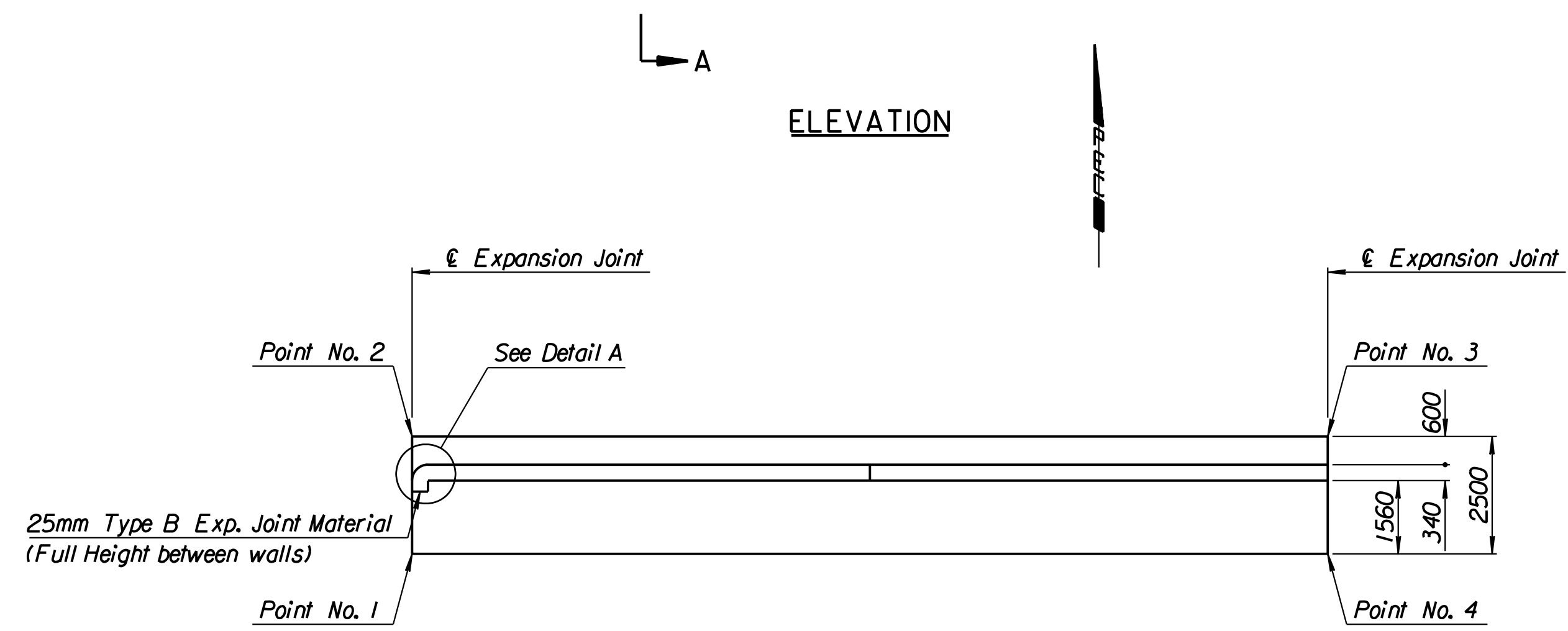
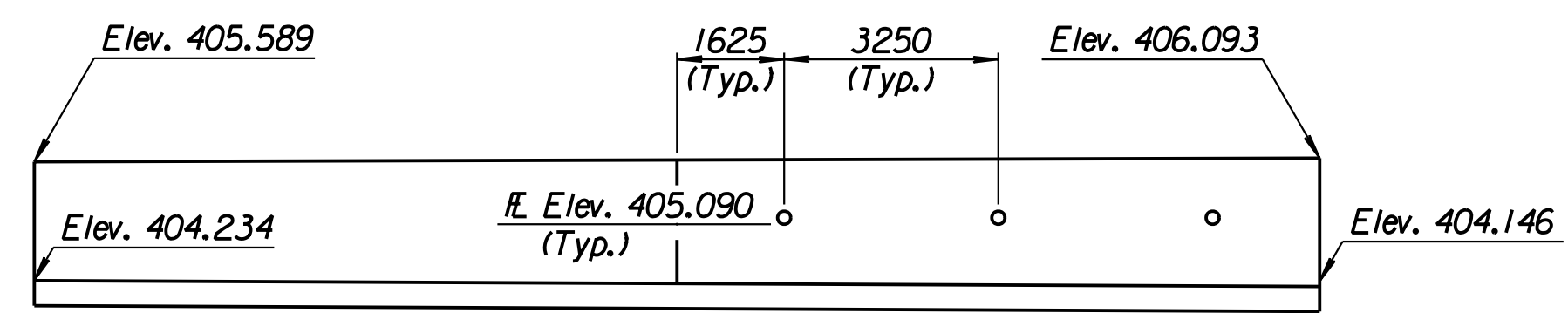
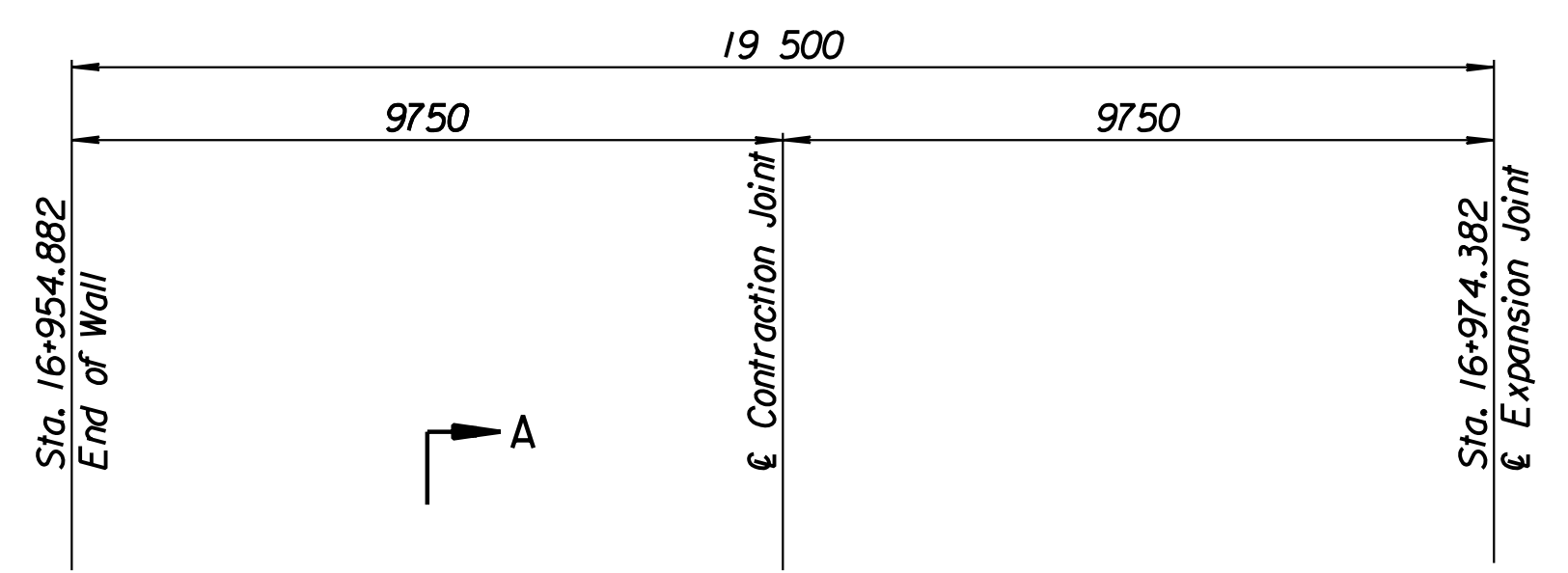


STATE	PROJECT NO.	YEAR	SHEET NO.	TOTAL SHEETS
KANSAS	54-87 K-6657-01	2002	327	1122

LAYOUT INFORMATION				
Point No.	North Coordinate	East Coordinate	Station	Offset
1	511868.969	492880.362	16+974.382	16.595 Lt.
2	511871.236	492879.309	16+974.382	19.095 Lt.
3	511863.022	492861.623	16+954.882	19.095 Lt.
4	511860.754	492862.676	16+954.882	16.595 Lt.

REINFORCING STEEL							
Straight Bars				Bent Bars			
Mark	Size	Number	Length	Mark	Size	Number	Length
M5-1	*16	132	2420	M5-3	*19	67	1520
M5-2	*13	32	10 100	M5-4	*13	66	1200
M5-5	*16	67	Varies	M5-8	*13	7	840
M5-6	*13	68	Varies				
M5-7	*13	24	9650				

WALL QUANTITIES		
Item	Quantity	Unit
Concrete (Grade 30)(AE)	29.3	m ³
Reinforcing Steel (Grade 420)	1622	kg
Class III Excavation	0.0	m ³



DETAIL A
 Note: End of wall section has an additional 2-#13M5-6, 1-#19M5-3 and 1-#16M5-5.

Drawn by: wil 3-22-2002
 Plotted by: drp 3-22-2002
 I:/1997/97362/As-Built/dgn/s/Vol 2/Sh 327-Tyler-NWwall-12.dgn Last Rev: 8-23-07 By: gdr

RECORD DRAWING

1			
No.	Revisions	By	Date
CITY OF WICHITA			
TYLER NORTHWEST WALL			
STA. 16+954.882 TO STA. 16+974.382			
SEDGWICK COUNTY			
Professional Engineering Consultants, P.A. <small>303 S. TOPEKA • WICHITA, KANSAS 67202 316-262-2691 • FAX 316-262-3003</small>			
Designed by	P.D.F.	Checked by	R.A.S.
Drawn by	W.L.L.	Date	April, 2002 Job No. 97362