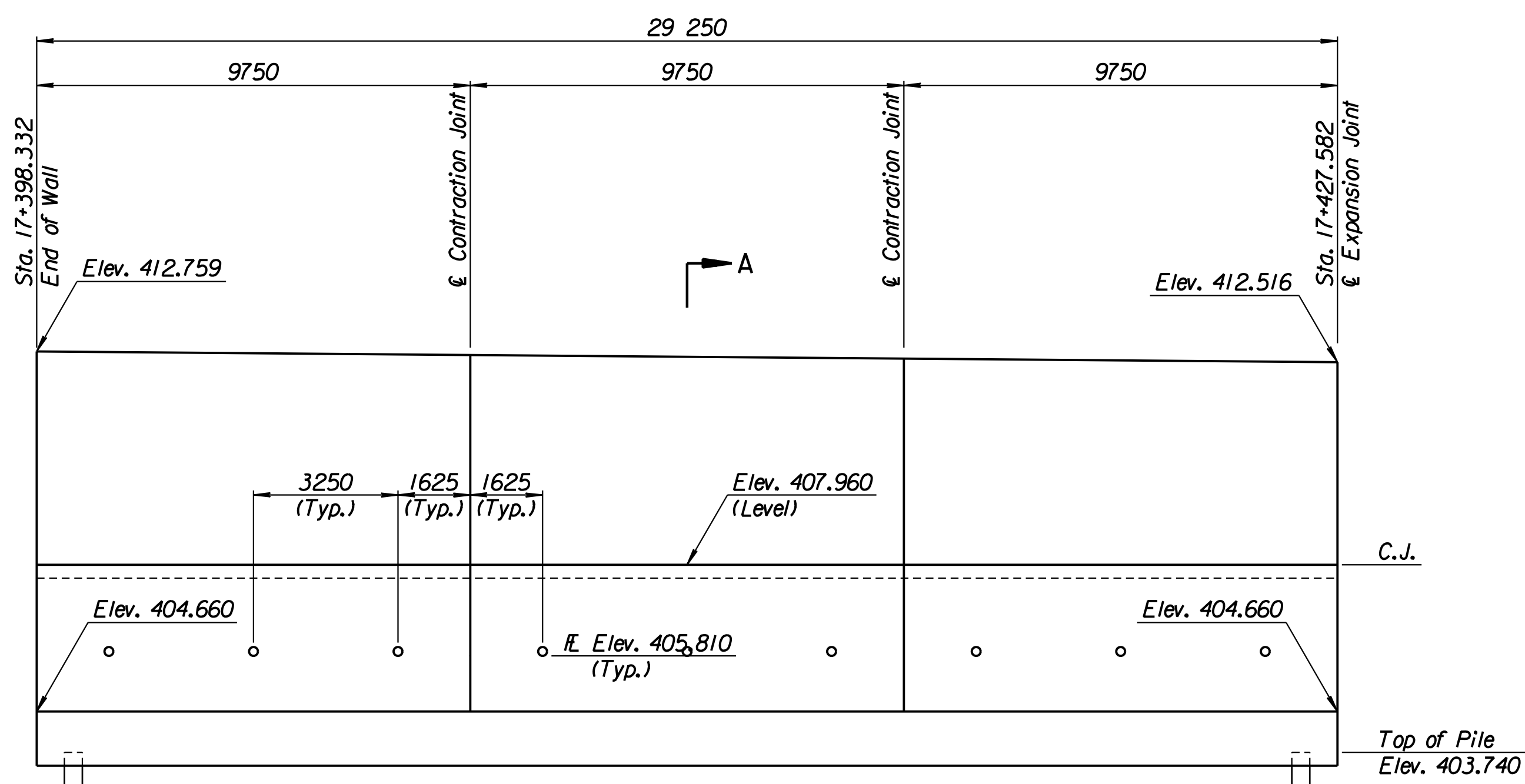


STATE	PROJECT NO.	YEAR	SHEET NO.	TOTAL SHEETS
KANSAS	54-87 K-6657-01	2002	328	1122

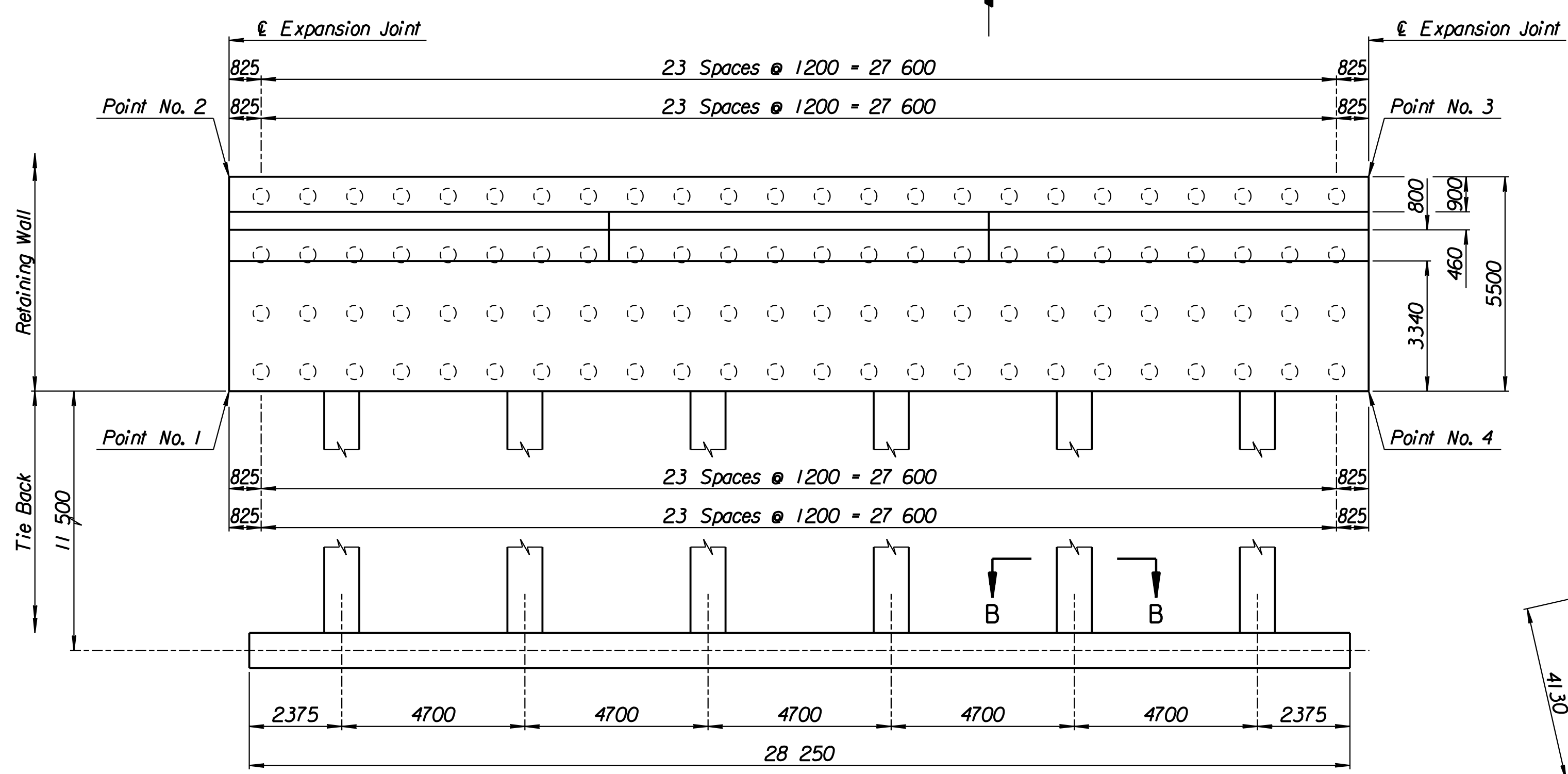
LAYOUT INFORMATION				
Point No.	North Coordinate	East Coordinate	Station	Offset
1	512045.112	493265.997	17+398.332	13.895 Lt.
2	512050.100	493263.680	17+398.332	19.395 Lt.
3	512062.422	493290.208	17+427.582	19.395 Lt.
4	512057.434	493292.525	17+427.582	13.895 Lt.

REINFORCING STEEL							
Straight Bars				Bent Bars			
Mark	Size	Number	Length	Mark	Size	Number	Length
A6-1	*29	312	5420	A6-3	*29	195	4630
A6-2	*25	72	15 540	A6-4	*22	195	2830
A6-6	*29	195	5400	A6-5	*29	195	2700
A6-7	*13	99	4160	A6-9	*19	99	1350
A6-8	*16	168	9650				
A6-10	*19	99	4410				
A6-11	*13	99	4510				
A6-12	*29	72	4000				

WALL QUANTITIES		
Item	Quantity	Unit
Pressure Grouted Pile (406 mm)	1152.0	m
Concrete (Grade 30)(AE)	338.4	m ³
Reinforcing Steel (Grade 420)	33 342	kg
Class III Excavation	371.5	m ³

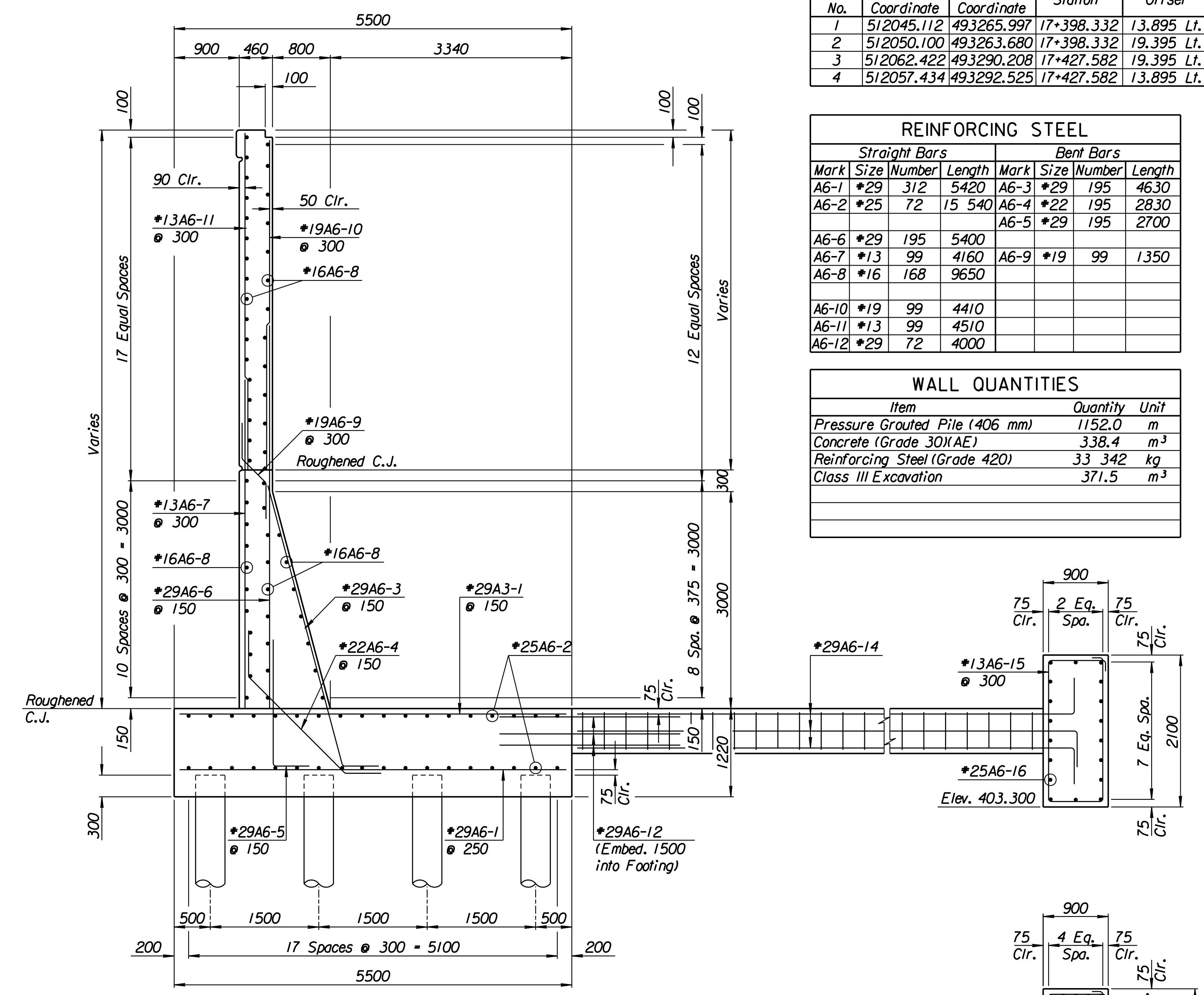


ELEVATION

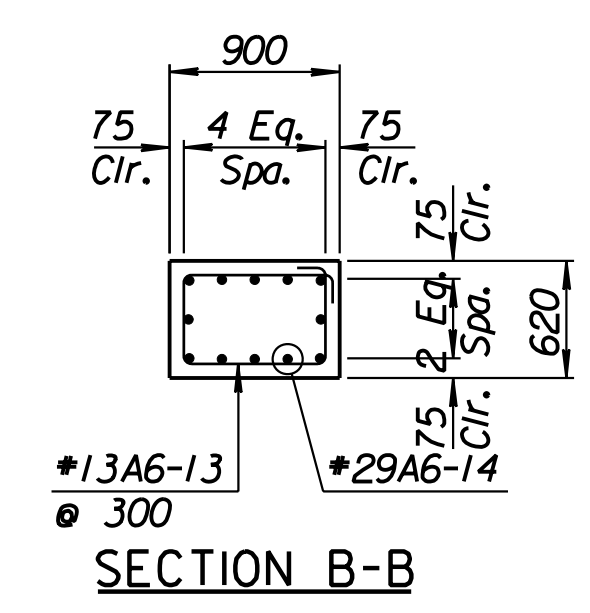


TIE BACK REINFORCING STEEL							
Straight Bars				Bent Bars			
Mark	Size	Number	Length	Mark	Size	Number	Length
A6-16	*25	36	15 040	A6-13	*13	222	2740
				A6-14	*29	72	12 000
				A6-15	*13	94	5700

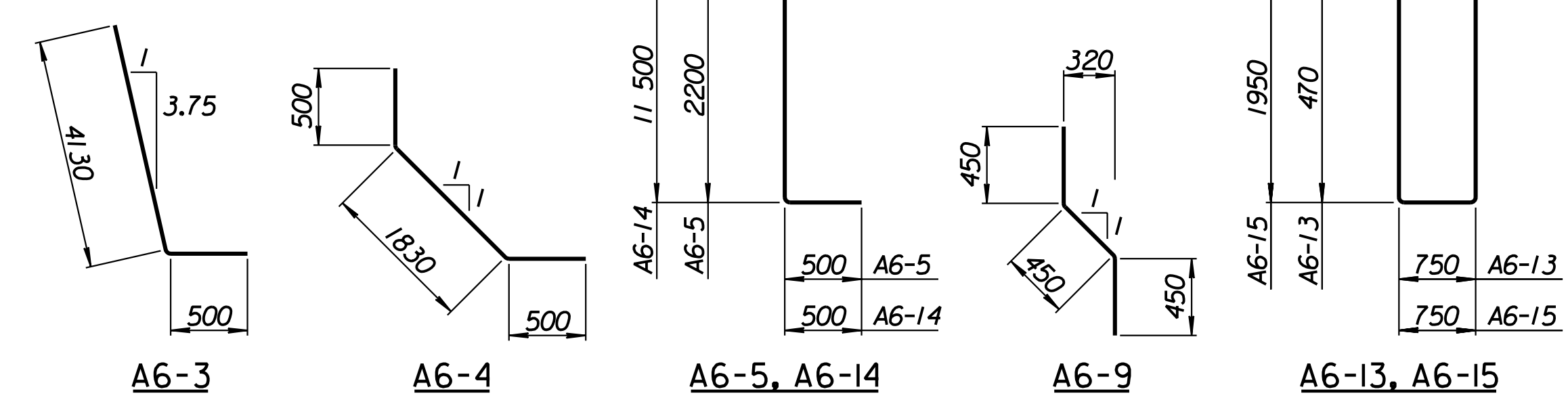
TIE BACK QUANTITIES		
Item	Quantity	Unit
Concrete (Grade 30)(AE)	90.4	m ³
Reinforcing Steel (Grade 420)	7660	kg



SECTION A-A



SECTION B-B



BENDING DIAGRAMS
All dimensions are out to out of bars.

RECORD DRAWING

Drawn by: wil
 Plotted by: drp
 4-11-2002
 I:/1997/97362/As-Built/dgn/s/Vol 2/Sh 328-Tyler-NEWall-I.dgn Last Rev: B-23-07 By: gdr

CITY OF WICHITA			
TYLER NORTHEAST WALL			
STA. 17+398.332 TO STA. 17+427.582			
SEDGWICK COUNTY			
 Professional Engineering Consultants, P.A. 303 S. TOPEKA • WICHITA, KANSAS 67202 316-262-2691 • FAX 316-262-3003			
Designed by	P.D.F.	Checked by	R.A.S.
Drawn by	W.L.L.	Date	April, 2002
		Job No.	97362