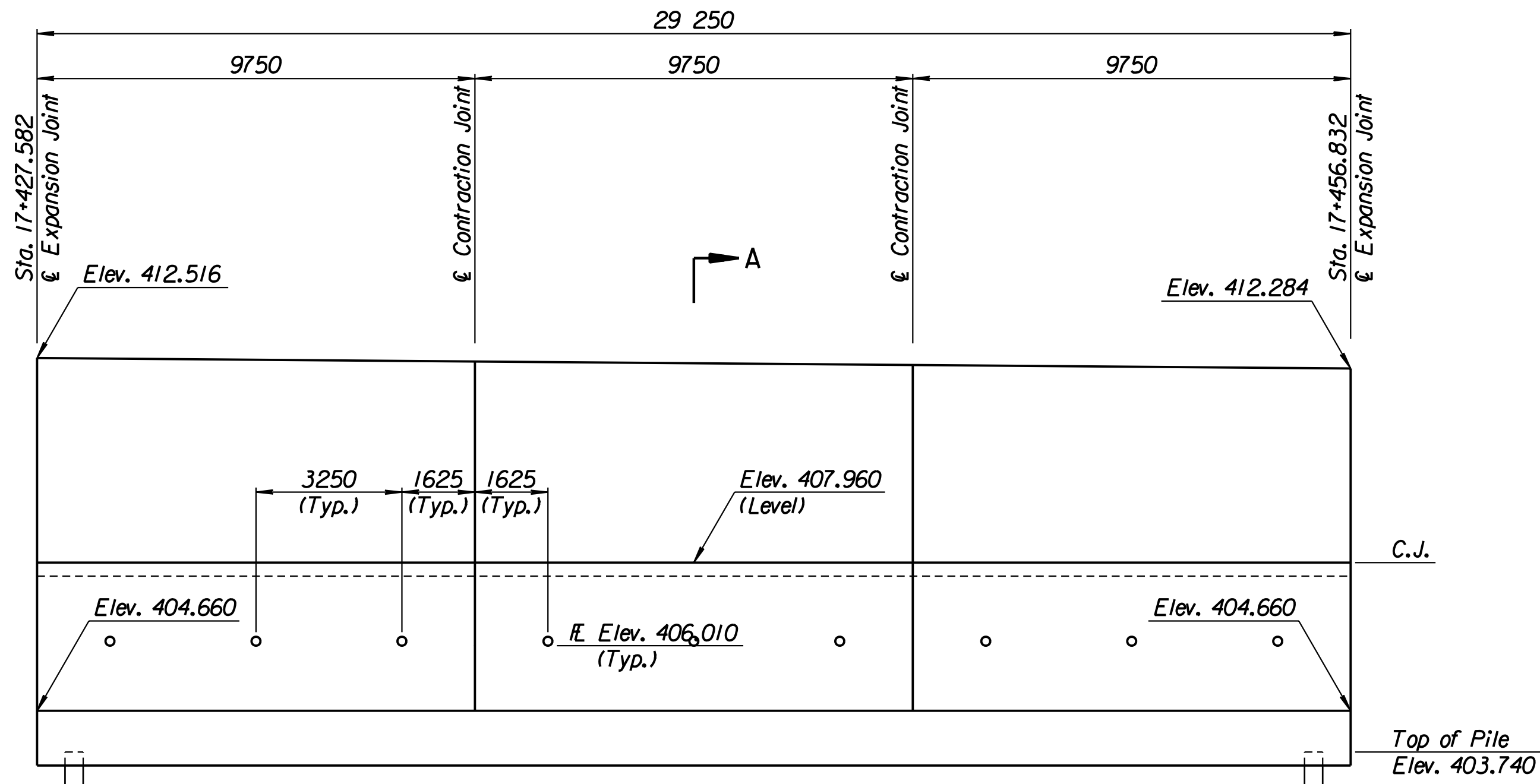


STATE	PROJECT NO.	YEAR	SHEET NO.	TOTAL SHEETS
KANSAS	54-87 K-6657-01	2002	329	1122

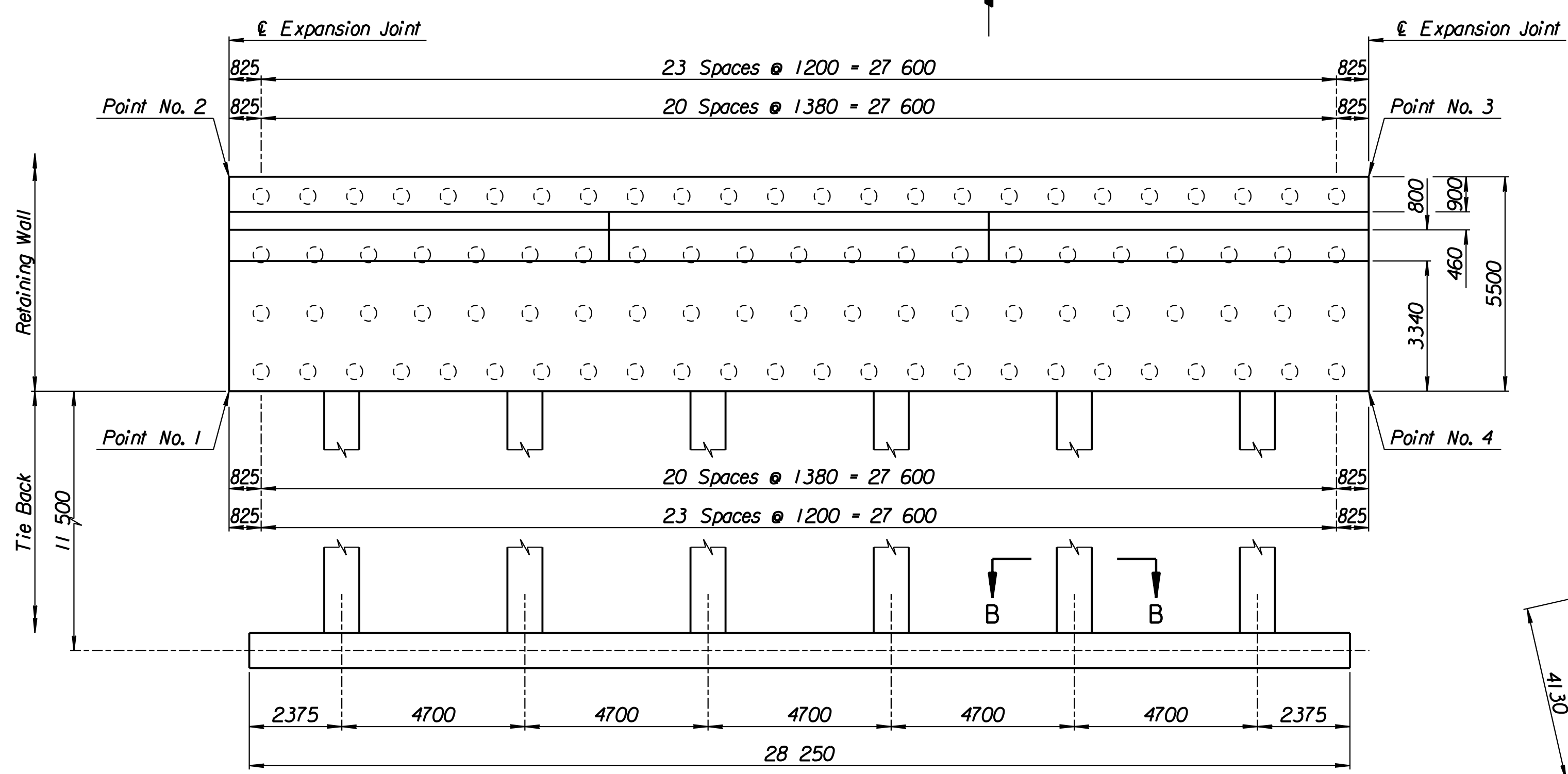
LAYOUT INFORMATION				
Point No.	North Coordinate	East Coordinate	Station	Offset
1	512057.434	493292.525	17+427.582	13.895 Lt.
2	512062.422	493290.208	17+427.582	19.395 Lt.
3	512074.744	493316.736	17+456.832	19.395 Lt.
4	512069.756	493319.053	17+456.832	13.895 Lt.

REINFORCING STEEL							
Straight Bars				Bent Bars			
Mark	Size	Number	Length	Mark	Size	Number	Length
B6-1	*29	312	5420	B6-3	*29	195	4630
B6-2	*25	72	15 540	B6-4	*22	195	2830
B6-6	*29	195	5380	B6-5	*29	195	2700
B6-7	*13	99	4140	B6-9	*19	99	1350
B6-8	*16	165	9650				
B6-10	*19	99	4170				
B6-11	*13	99	4270				
B6-12	*29	72	4000				

WALL QUANTITIES		
Item	Quantity	Unit
Pressure Grouted Pile (406 mm)	1080.0	m
Concrete (Grade 30)(AE)	335.2	m <sup>3</sup>
Reinforcing Steel (Grade 420)	33 199	kg
Class III Excavation	361.1	m <sup>3</sup>

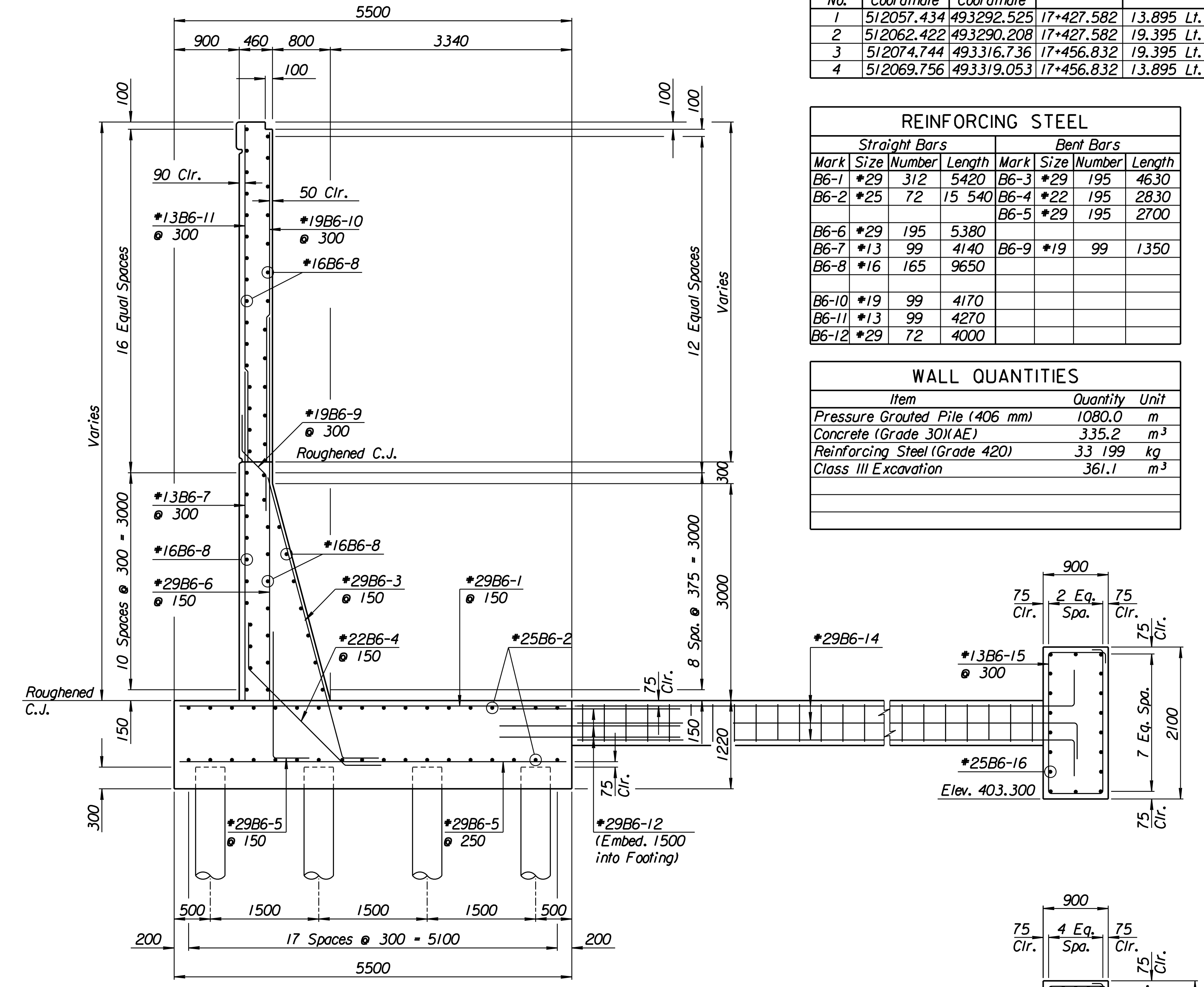


ELEVATION

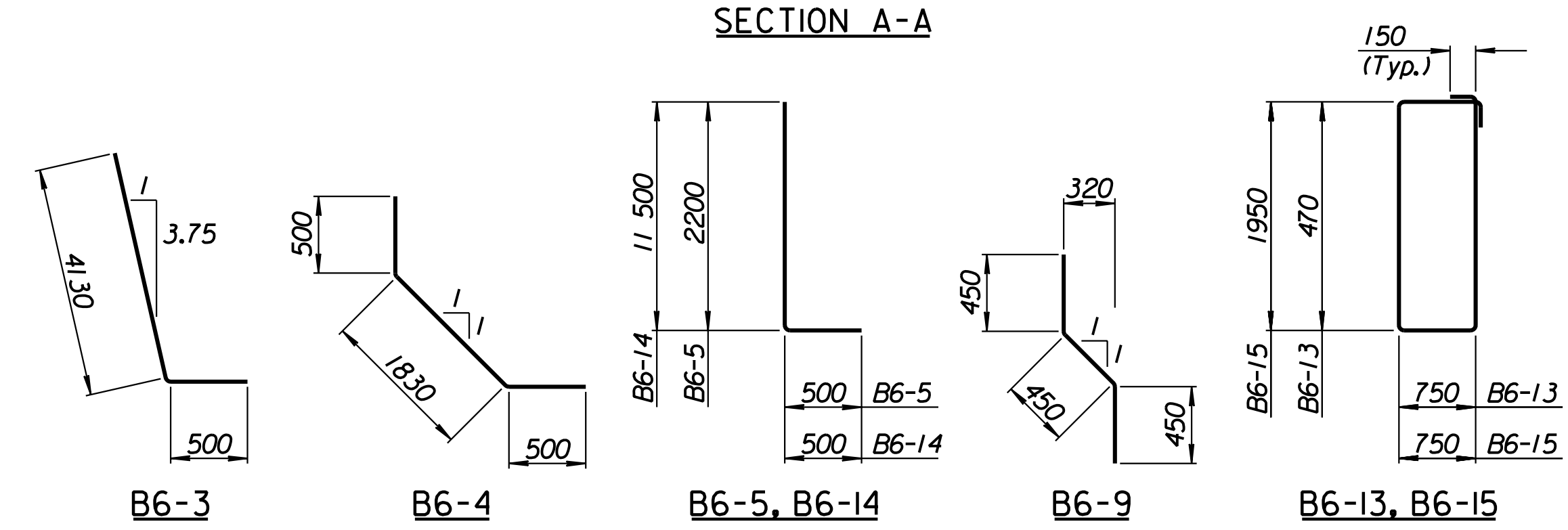


TIE BACK REINFORCING STEEL							
Straight Bars				Bent Bars			
Mark	Size	Number	Length	Mark	Size	Number	Length
B6-16	*25	36	15 040	B6-13	*13	222	2740
				B6-14	*29	72	12 000
				B6-15	*13	94	5700

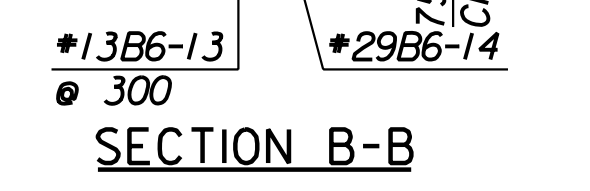
TIE BACK QUANTITIES		
Item	Quantity	Unit
Concrete (Grade 30)(AE)	90.4	m <sup>3</sup>
Reinforcing Steel (Grade 420)	7660	kg



SECTION A-A



BENDING DIAGRAMS  
All dimensions are out to out of bars.



SECTION B-B

1			
No.	Revisions	By	Date
CITY OF WICHITA			
<b>TYLER NORTHEAST WALL</b>			
STA. 17+427.582 TO STA. 17+456.832			
SEDGWICK COUNTY			
<b>Professional Engineering Consultants, P.A.</b> 303 S. TOPEKA • WICHITA, KANSAS 67202 316-262-2691 • FAX 316-262-3003			
Designed by	P.D.F.	Checked by	R.A.S.
Drawn by	W.L.L.	Date	April 11, 2002
		Job No.	97362

Drawn by: wil  
 Plotted by: drp  
 4-11-2002  
 1:1997197362/As-Built/dgn/s/Vol 2/Sh 329-Tyler-NEWall-2.dgn Last Rev: 8-23-07 By: gdr